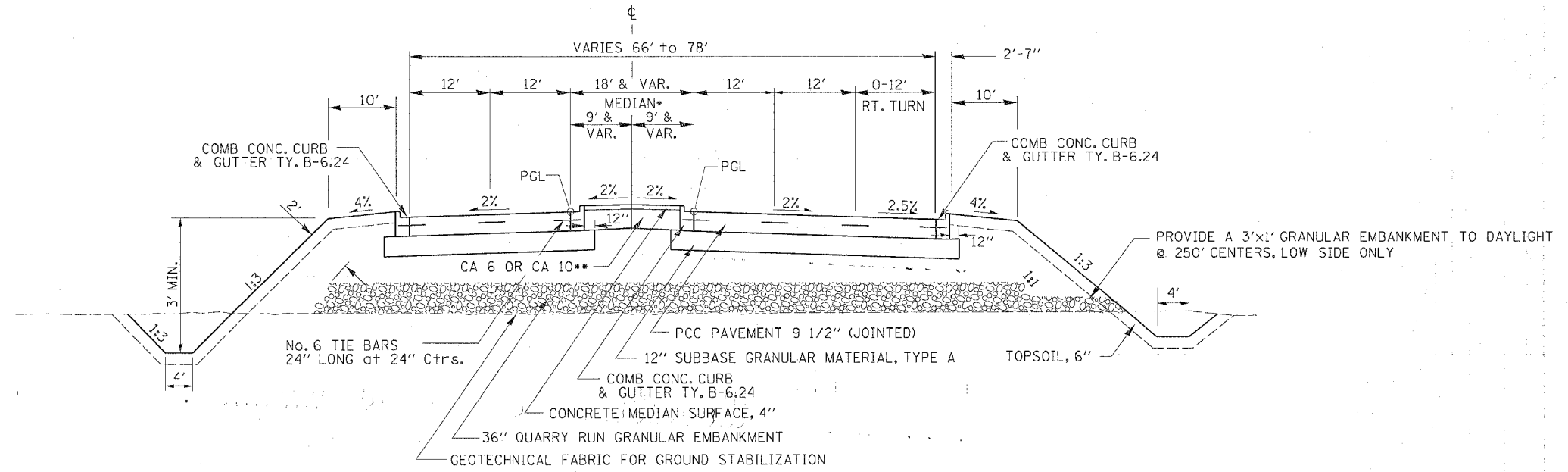


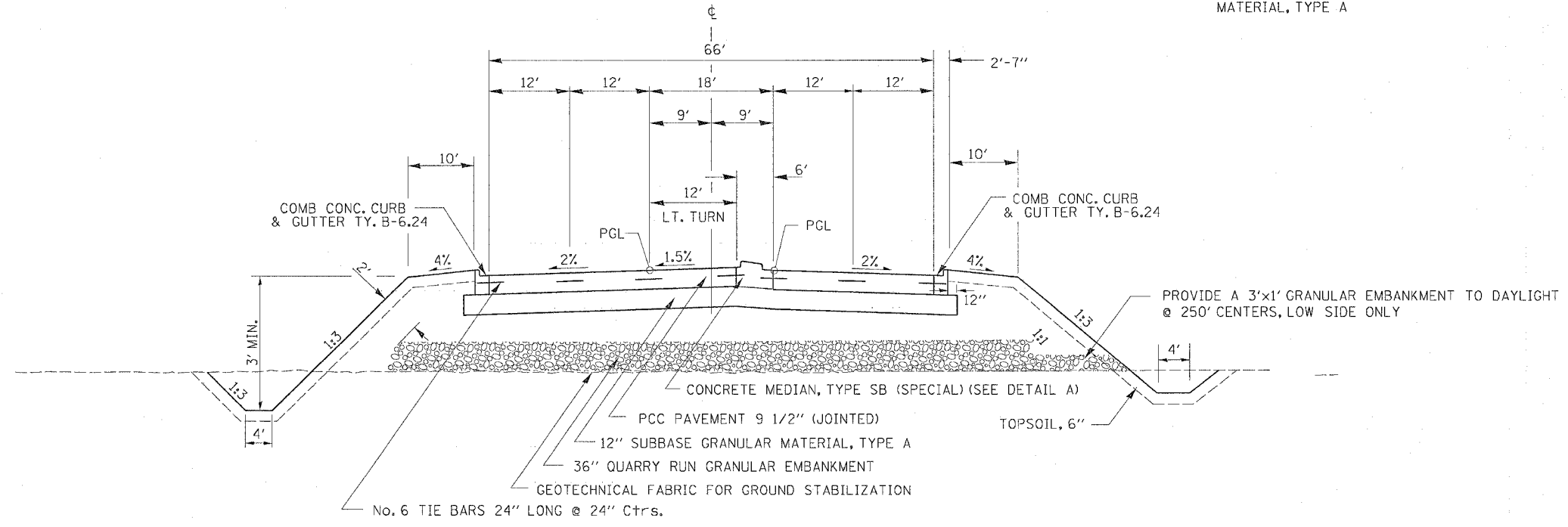
F.A.P. RTE.	SECTION	COUNTY	TOTAL SHEETS	SHEET NO.
595	1-3-K	ROCK ISLAND	476	26
STA.		TO STA.		
FED. ROAD DIST. NO.		ILLINOIS FED. AID PROJECT		

# TYPICAL SECTIONS



52ND AVENUE  
STA. 1161+66.13 - 1166+00.00

\*CORRUGATED MEDIAN STA. 1165+16.03 TO 1165+53.68  
\*\*THE COST OF THE CA 6 OR CA 10 TO BE INCLUDED IN THE COST OF SUB BASE GRANULAR MATERIAL, TYPE A



52ND AVENUE  
STA. 1166+00.00 - 1168+21.00