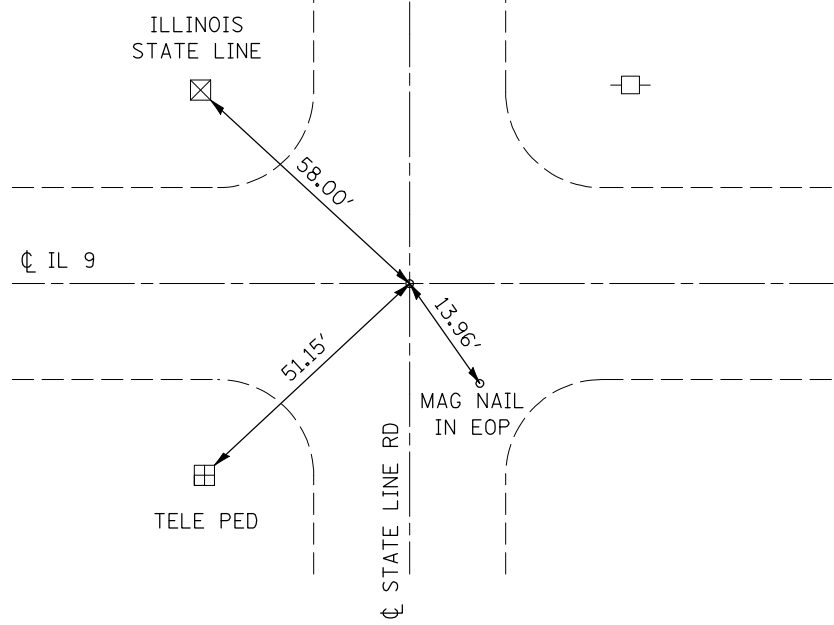
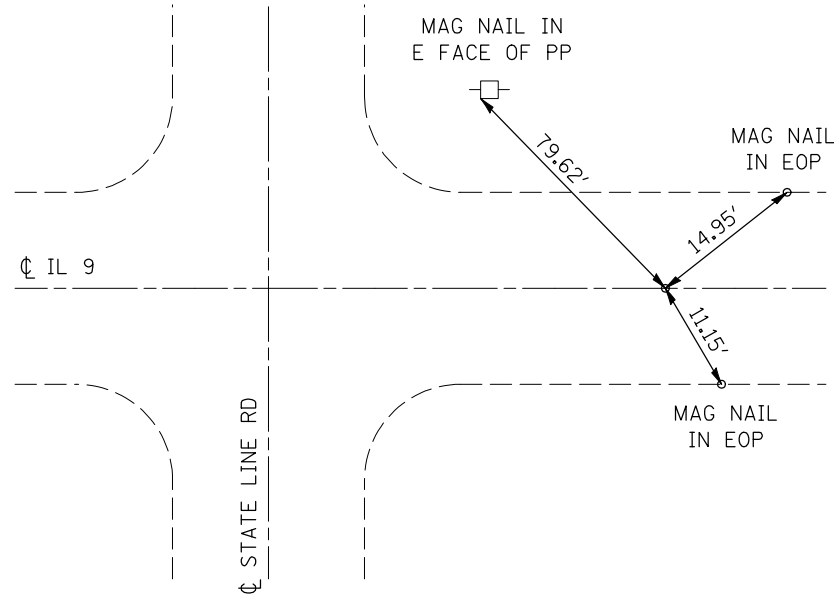


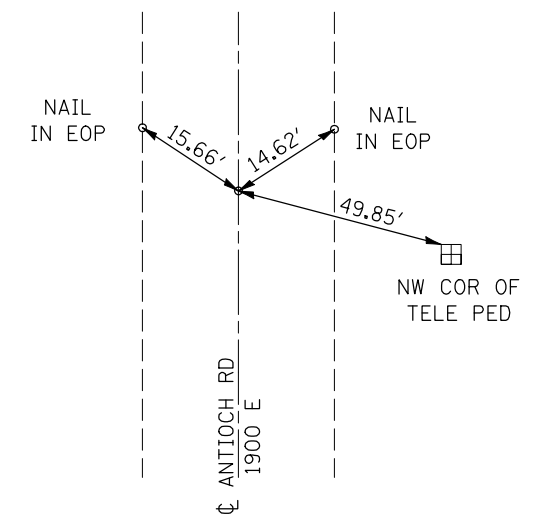
P.T.
STA. 1552 + 78.45



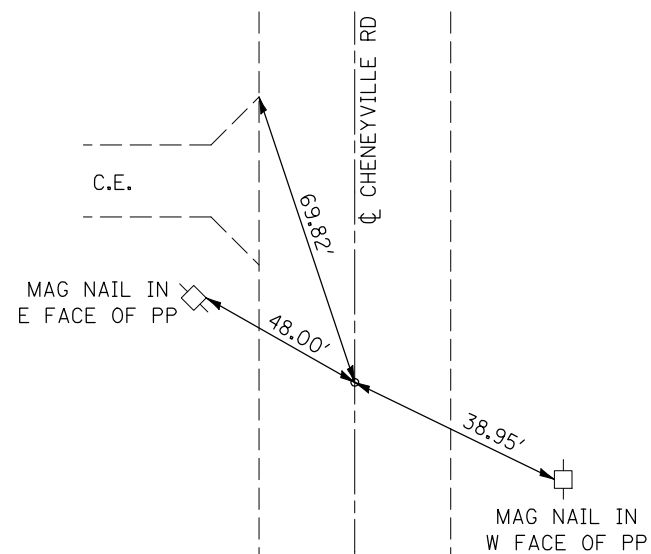
END POINT
STA. 1554 + 62.77



P.O.T.
STA. 93 + 15.00 (ANTIOCH RD)



P.O.T.
STA. 206 + 12.02 (CHENEYVILLE RD)



FILE NAME =	USER NAME = ceorlockjd	DESIGNED -	REVISED -
ct:\pw\work\pwidot\CEARLOCKJD\dms87652\4590866-sht-ATB.dgn	4590866-sht-ATB.dgn	DRAWN -	REVISED -
	PLOT SCALE = 40.0000' / IN.	CHECKED -	REVISED -
	PLOT DATE = 2/6/2009	DATE -	REVISED -

STATE OF ILLINOIS
DEPARTMENT OF TRANSPORTATION

TIE POINTS			
SCALE:	SHEET NO.	OF SHEETS	STA. TO STA.

F.A.P. RTE.	SECTION	COUNTY	TOTAL SHEETS	SHEET NO.
697	46RS-8&1RS-2&46BDR	VERMILION	75	24
FED. ROAD DIST. NO. ILLINOIS FED. AID PROJECT			CONTRACT NO. 90866	