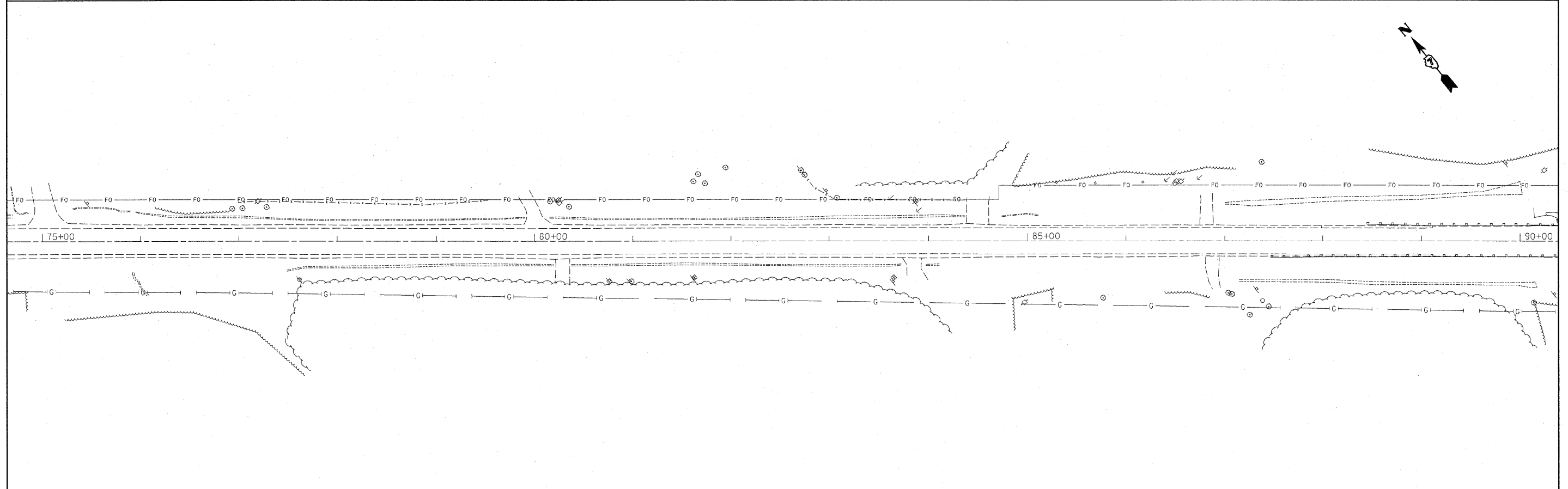
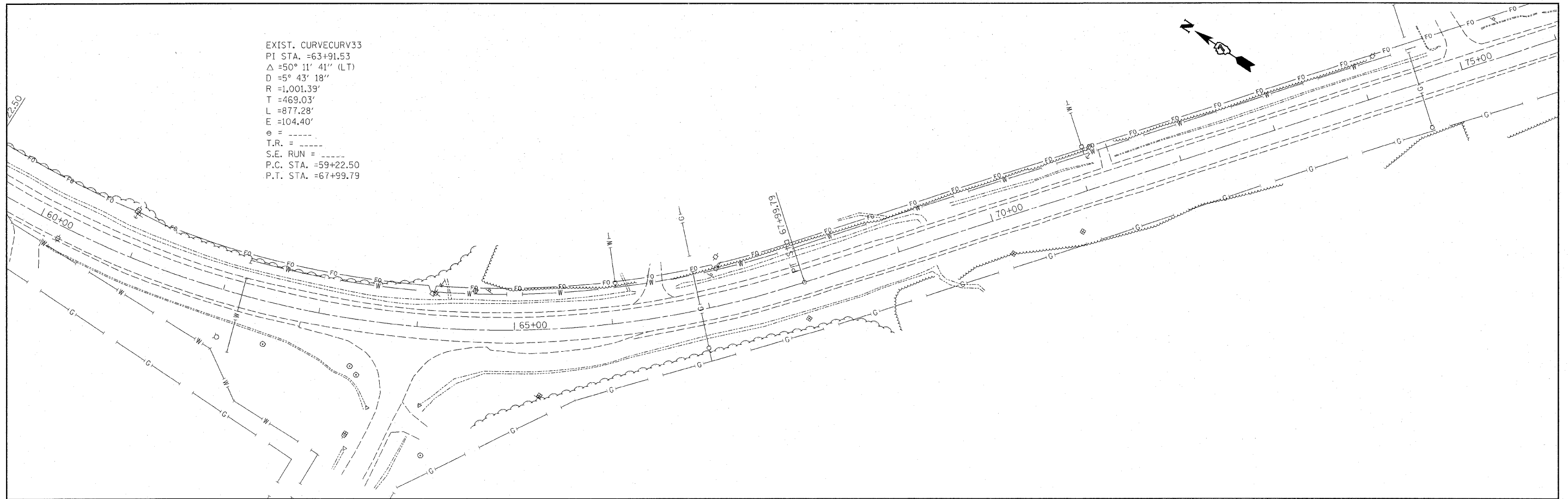


EXIST. CURVECURV33
 PI STA. =63+91.53
 Δ =50° 11' 41" (LT)
 D =5° 43' 18"
 R =1,001.39'
 T =469.03'
 L =877.28'
 E =104.40'
 e =
 T.R. =
 S.E. RUN =
 P.C. STA. =59+22.50
 P.T. STA. =67+99.79



FILE NAME = c:\pwork\PWIDOT\STEFFENMK\d0123229\	USER NAME = steffenmk	DESIGNED -	REVISED -	STATE OF ILLINOIS DEPARTMENT OF TRANSPORTATION	PLAN SHEETS			F.A.P. RTE. 773	SECTION .	COUNTY Cumberland	TOTAL SHEETS 26	SHEET NO. 20
	74379-eh-t-p-lan.dgn	DRAWN -	REVISED -		SCALE: 1"=50'	SHEET NO. 3 OF 9 SHEETS	STA. 60+00 TO STA. 90+00	CONTRACT NO. 74379				
	PLOT SCALE = 50.0000' / IN.	CHECKED -	REVISED -		ILLINOIS FED. AID PROJECT							
	PLOT DATE = 2/6/2009	DATE -	REVISED -		*110RS-1,(111,111X)RS-2,F-2RS-1							