

STATE OF ILLINOIS
DEPARTMENT OF TRANSPORTATION

DIVISION OF HIGHWAYS

PROPOSED
HIGHWAY PLANS

FAP ROUTE 766 (ILL. ROUTE 32)
SECTION (105,106)RS-2
PROJECT: ESP-0766(005)
RESURFACING
SHELBY COUNTY

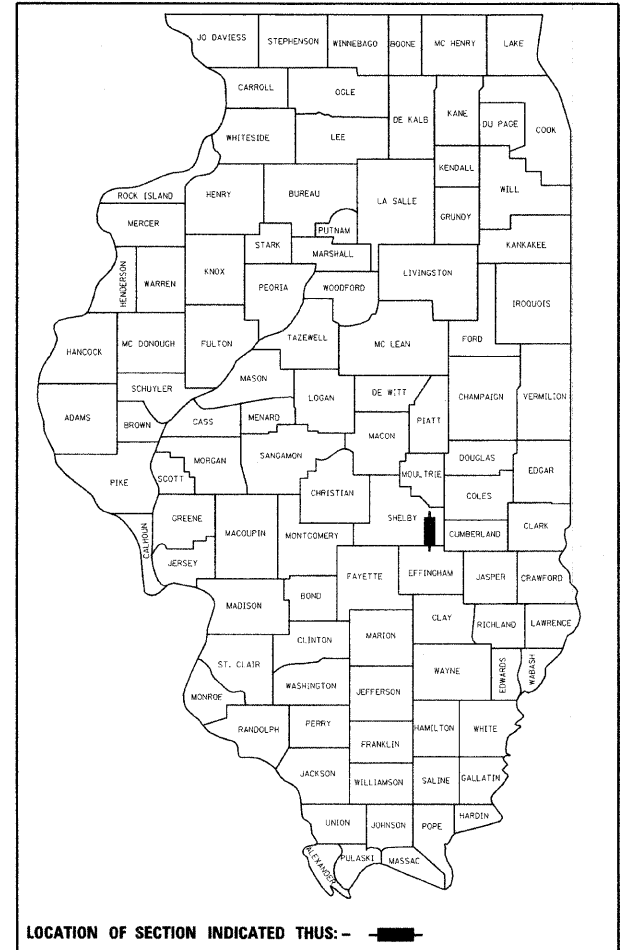
C-97-062-09

F.A.P. RTE.	SECTION	COUNTY	TOTAL SHEETS	SHEET NO.
766	(105,106)RS-2	SHELBY	12	1
		ILLINOIS	CONTRACT NO. 74377	

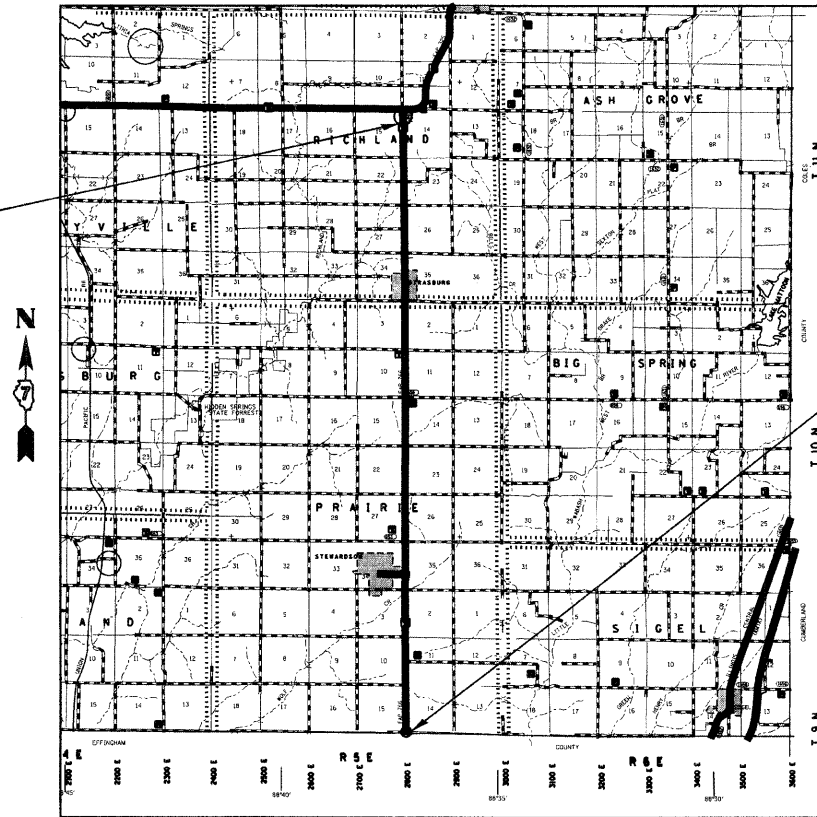
FOR INDEX OF SHEETS, SEE SHEET NO. 2

2008 ADT = 3350

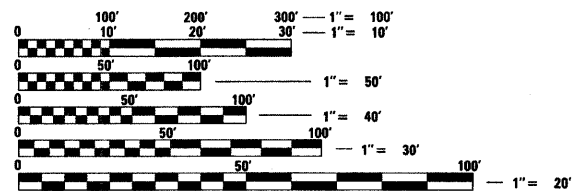
D-97-033-09



FAP ROUTE 766
SECTION (105, 106)RS-2
SHELBY COUNTY
PROJECT BEGINS:
STATION 0+10



FAP ROUTE 766
SECTION (105, 106)RS-2
SHELBY COUNTY
PROJECT ENDS:
STATION 688+10



FULL SIZE PLANS HAVE BEEN PREPARED USING STANDARD ENGINEERING SCALES. REDUCED SIZED PLANS WILL NOT CONFORM TO STANDARD SCALES. IN MAKING MEASUREMENTS ON REDUCED PLANS, THE ABOVE SCALES MAY BE USED.

J.U.L.I.E.
JOINT UTILITY LOCATION INFORMATION FOR EXCAVATION
1-800-892-0123
OR 811

PROJECT ENGINEER: TOM RONAN
PROJECT MANAGER: JASON MYERS

GROSS LENGTH = 68,800 FT. = 13.030 MILE
NET LENGTH = 68,800 FT. = 13.030 MILE

CONTRACT NO. 74377

STATE OF ILLINOIS
DEPARTMENT OF TRANSPORTATION
DIVISION OF HIGHWAYS

SUBMITTED February 6, 2009

Roger L. Swislock
DEPUTY DIRECTOR OF HIGHWAYS, REGION ENGINEER

March 13, 2009
Charles G. Ingersoll
ENGINEER OF DESIGN AND ENVIRONMENT

March 13, 2009
Christine M. Reed
DIRECTOR OF HIGHWAYS, CHIEF ENGINEER

PRINTED BY THE AUTHORITY
OF THE STATE OF ILLINOIS

GENERAL NOTES

THIS SECTION SHALL BE CONSTRUCTED IN ACCORDANCE WITH THE PLANS; THE "STANDARD SPECIFICATIONS FOR ROAD AND BRIDGE CONSTRUCTION", ADOPTED JANUARY 1, 2007; THE "SUPPLEMENTAL SPECIFICATIONS AND RECURRING SPECIAL PROVISIONS", ADOPTED JANUARY 1, 2009, AND THE SPECIAL PROVISIONS INCLUDED IN THIS PROPOSAL.

THE WORK INCLUDED IN THIS SECTION CONSISTS OF PAVEMENT PATCHING, MILLING, OVERLAYING THE HOT-MIX ASPHALT WEARING SURFACE, AGGREGATE SHOULDERS, PAVEMENT MARKING, AND ANY OTHER WORK NECESSARY TO COMPLETE THIS SECTION. THIS PROJECT IS LOCATED ON ILLINOIS ROUTE 32 IN SHELBY COUNTY FROM ILLINOIS ROUTE 16 TO THE EFFINGHAM COUNTY LINE.

THERE ARE EXISTING 3' WIDE HOT-MIX ASPHALT SHOULDERS AT THE NORTH END OF THE PROJECT NEAR THE INTERSECTION OF ILLINOIS ROUTE 16. THE EXISTING SHOULDERS SHALL BE MILLED AND OVERLAYED WITH HOT-MIX ASPHALT SURFACE COURSE. THE EXISTING FIELD ENTRANCES HAVE 3' HOT-MIX ASPHALT APRONS ADJACENT TO THE EDGE OF PAVEMENT. THESE HOT-MIX ASPHALT APRONS SHALL BE OVERLAYED USING HOT-MIX ASPHALT SURFACE COURSE BY UTILIZING THE WIDTH EXTENSION ON THE PAVER AS IT PASSES THE FIELD ENTRANCES. THE HOT-MIX ASPHALT MATERIAL PLACED ON THE SHOULDERS AND FIELD ENTRANCE APRONS SHALL BE PAID FOR AS HOT-MIX ASPHALT SURFACE COURSE.

DURING RESURFACING OPERATIONS IN STEWARDSON AND STRASBURG THE CONTRACTOR SHALL NOT OPERATE ROLLERS IN THE DYNAMIC MODE. ALL DENSITY REQUIREMENTS WILL REMAIN THE SAME.

THE MATERIAL USED FOR AGGREGATE SHOULDERS, TYPE B SHALL BE EITHER CRUSHED STONE, CRUSHED CONCRETE, OR RAP. THE MATERIAL USED FOR AGGREGATE SURFACE COURSE, TYPE B SHALL BE CRUSHED STONE OR CRUSHED CONCRETE.

PAVEMENT MARKING SHALL BE APPLIED IN ACCORDANCE WITH SECTION 780 OF THE STANDARD SPECIFICATIONS. SHORT TERM PAVEMENT MARKING SHALL BE APPLIED TO THE MILLED SURFACE, BITUMINOUS MATERIALS (PRIME COAT), AND HOT-MIX ASPHALT LEVEL BINDER, HOT-MIX ASPHALT SURFACE COURSE AS SPECIFIED IN SECTION 703 OF THE STANDARD SPECIFICATIONS. TEMPORARY TAPE SHALL BE USED ON THE SURFACE COURSE AND PAINT SHALL BE USED ON MILLED SURFACES.

THE TOTAL QUANTITY OF PAINT PAVEMENT MARKING - LINE 4" CONSISTS OF 18,710 FEET OF YELLOW AND 134,986 FEET OF WHITE.

RAISED REFLECTIVE PAVEMENT MARKERS SHALL BE INSTALLED IN ACCORDANCE WITH SECTION 781 OF THE STANDARD SPECIFICATIONS. THE TOTAL QUANTITY OF RAISED REFLECTIVE PAVEMENT MARKERS CONSISTS OF 860 TWO-WAY AMBER MARKERS.

THE FOLLOWING MIXTURE REQUIREMENTS ARE APPLICABLE FOR THIS PROJECT:

SURFACE COURSE (1.5")

APPLICATION: HOT MIX ASPHALT SURFACE COURSE, MIX "C", N70
 PG GRADE: PG 64-22
 DESIGN AIR VOIDS: 4.0% @ DESIGN = 70
 MIXTURE COMPOSITION: IL-9.5
 FRICTION AGGREGATE: MIXTURE C

INCIDENTAL HMA

APPLICATION: HOT MIX ASPHALT SURFACE COURSE, MIX "C", N50
 PG GRADE: PG 64-22
 DESIGN AIR VOIDS: 4.0% @ DESIGN = 50
 MIXTURE COMPOSITION: IL-9.5
 FRICTION AGGREGATE: MIXTURE C

PARTIAL DEPTH PATCHING

APPLICATION: HOT MIX ASPHALT BINDER COURSE, IL-19.0, N70
 PG GRADE: PG 64-22
 DESIGN AIR VOIDS: 4.0% @ DESIGN = 70
 MIXTURE COMPOSITION: IL-19.0
 FRICTION AGGREGATE: N/A

THE CONTRACTOR SHALL PROVIDE INTERNET ACCESSIBILITY TO THE HOT-MIX ASPHALT PLANT QUALITY CONTROL LAB SO THAT HOT-MIX ASPHALT PLANT REPORTS CAN BE E-MAILED TO THE DISTRICT HEADQUARTERS. THIS WORK SHALL BE INCLUDED IN THE COST OF ALL HOT-MIX ASPHALT ITEMS.

THE CONTRACTOR SHALL USE EITHER RC-70 OR AN EMULSIFIED POLYMER PRIME SS-1HP FOR THE PAY ITEM BITUMINOUS MATERIALS (PRIME COAT).

THE PAY ITEM TEMPORARY RAMP HAS BEEN INCLUDED FOR THE CONSTRUCTION OF TEMPORARY RAMPS IN ACCORDANCE WITH ARTICLE 406.08 OF THE STANDARD SPECIFICATIONS. THE CONTRACT UNIT PRICE PER SQUARE YARD FOR TEMPORARY RAMP SHALL INCLUDE BOTH THE INSTALLATION AND THE REMOVAL OF THE RAMPS.

THE FOLLOWING RATES OF APPLICATION HAVE BEEN USED IN CALCULATING PLAN QUANTITIES:

HOT MIX ASPHALT	112 LBS/SQ YD/IN
BITUMINOUS MATERIALS PRIME COAT	0.10 GALLONS/SQ YD
AGGREGATE PRIME COAT	2.00 LBS/SQ YD
GRANULAR MATERIAL	2.05 TONS/CU YD

INDEX OF SHEETS

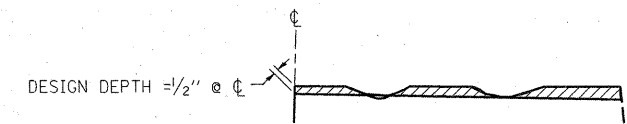
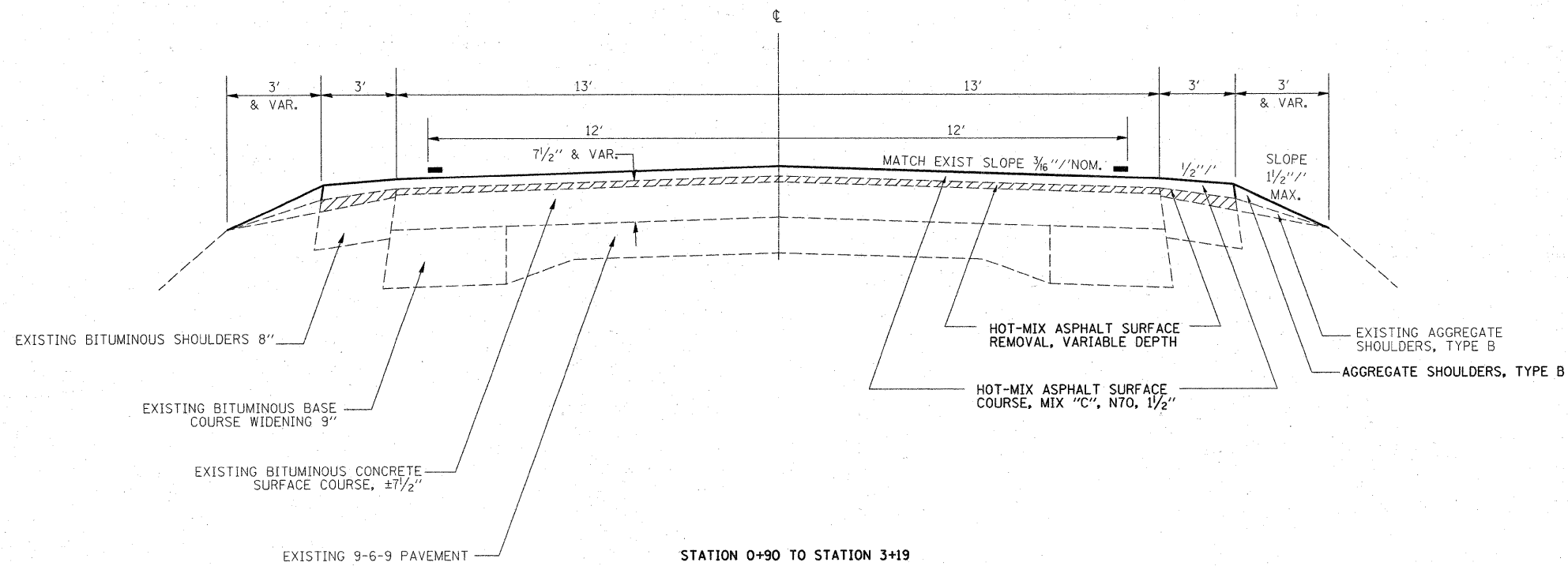
SHEET NO.	ITEM
1	COVER SHEET
2	INDEX OF SHEETS & GENERAL NOTES
3	SUMMARY OF QUANTITIES
4-5	TYPICAL SECTIONS
6	SCHEDULE OF QUANTITIES
7-8	ENTRANCE SCHEDULE AND DETAILS
9	TYPICAL RUMBLE STRIP APPLICATION
10	SURVEY MARKER VAULT
11	PCC PARTIAL DEPTH HOT-MIX ASPHALT PATCHING
12	INTERSECTION AND STRIPING DETAIL FOR IL 16 AND IL 32

THE FOLLOWING STANDARDS ARE A PART OF THESE PLANS AND ARE INCLUDED AFTER SHEET NO. 12:

STD. NO.	DESCRIPTION
000001-05	STANDARD SYMBOLS, ABBREVIATIONS AND PATTERNS
406201-01	MAILBOX TURNOUT
442201-03	CLASS C AND D PATCHES
701006-03	OFF-RD OPERATIONS, 2L, 2W, 15' TO 24" FROM PAVEMENT EDGE
701011-02	OFF-RD MOVING OPERATIONS, 2L, 2W, DAY ONLY
701306-02	LANE CLOSURE, 2L, 2W, SLOW MOVING OPERATIONS DAY ONLY, FOR SPEEDS >= 45 MPH
701311-03	LANE CLOSURE, 2L, 2W, MOVING OPERATIONS - DAY ONLY
701336-05	LANE CLOSURE, 2L, 2W, WORK AREAS IN SERIES, FOR SPEEDS >= 45 MPH
701901-01	TRAFFIC CONTROL DEVICES
780001-02	TYPICAL PAVEMENT MARKINGS
781001-03	TYPICAL APPLICATIONS RAISED REFLECTIVE PAVEMENT MARKERS

SUMMARY OF QUANTITIES			100% FED.	CONSTRUCTION TYPE CODE		
CODE NO	ITEM	UNIT	TOTAL QUANTITIES	1000		
40200800	AGGREGATE SURFACE COURSE, TYPE B	TON	145	145		
40600100	BITUMINOUS MATERIALS (PRIME COAT)	GALLON	20031	20031		
40600300	AGGREGATE (PRIME COAT)	TON	401	401		
40600895	CONSTRUCTING TEST STRIP	EACH	1	1		
40600982	HOT-MIX ASPHALT SURFACE REMOVAL - BUTT JOINT	SQ YD	87	87		
40600990	TEMPORARY RAMP	SQ YD	107	107		
40603315	HOT-MIX ASPHALT SURFACE COURSE, MIX "C", N70	TON	16939	16939		
40800050	INCIDENTAL HOT-MIX ASPHALT SURFACING	TON	443	443		
44000155	HOT-MIX ASPHALT SURFACE REMOVAL, 1 1/2"	SQ YD	884	884		
44000198	HOT-MIX ASPHALT SURFACE REMOVAL, VARIABLE DEPTH	SQ YD	199337	199337		
48101200	AGGREGATE SHOULDERS, TYPE B	TON	3595	3595		
66700110	PERMANENT SURVEY MARKERS TO BE ADJUSTED	EACH	4	4		
67000500	ENGINEER'S FIELD OFFICE, TYPE B	CAL MO	3	3		
67100100	MOBILIZATION	L SUM	1	1		
70100460	TRAFFIC CONTROL AND PROTECTION, STANDARD 701306	L SUM	1	1		
70100600	TRAFFIC CONTROL AND PROTECTION, STANDARD 701336	L SUM	1	1		
70300100	SHORT-TERM PAVEMENT MARKING	FOOT	13760	13760		
70300220	TEMPORARY PAVEMENT MARKING - LINE 4"	FOOT	153696	153696		
70301000	WORK ZONE PAVEMENT MARKING REMOVAL	SQ FT	2293	2293		
* 78001110	PAINT PAVEMENT MARKING - LINE 4"	FOOT	153696	153696		
* 78001130	PAINT PAVEMENT MARKING - LINE 6"	FOOT	155	155		
* 78001150	PAINT PAVEMENT MARKING - LINE 12"	FOOT	73	73		
* 78001180	PAINT PAVEMENT MARKING - LINE 24"	FOOT	30	30		
* 78100100	RAISED REFLECTIVE PAVEMENT MARKER	EACH	860	860		
X0301232	SURVEY MARKER VAULT	EACH	14	14		
X4401705	PARTIAL DEPTH REMOVAL	SQ YD	1099	1099		
X4421000	PARTIAL DEPTH PATCHING	TON	646	646		
Z0055600	RUMBLE STRIP	SQ YD	108	108		
Z0070100	SURVEY MONUMENT COVER ASSEMBLY	EACH	14	14		

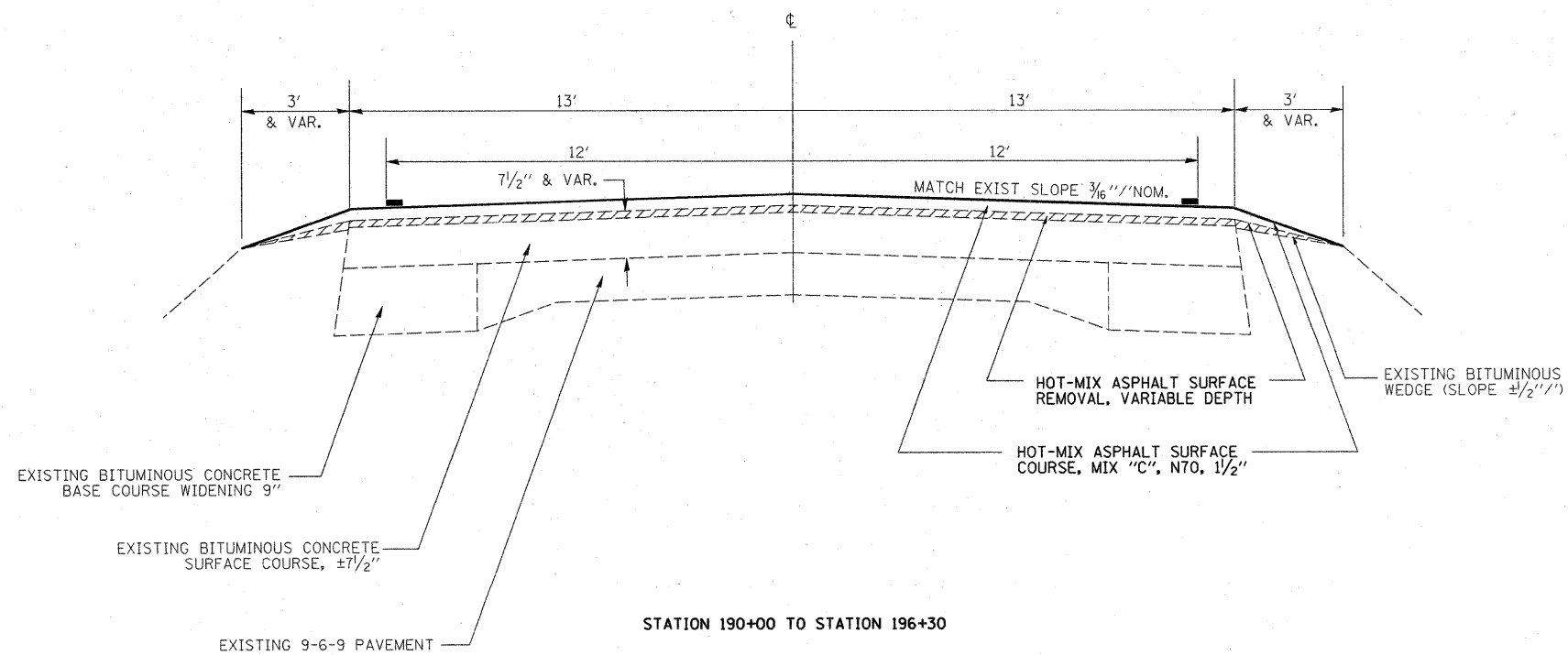
*SPECIALTY ITEMS



NOTES:

1. MILLING SHALL BE DONE TO ATTAIN A 3/16" / SLOPE IN CROWN SECTIONS
2. EXISTING S.E. AND S.E. TRANSITIONS SHALL BE MAINTAINED UNLESS OTHERWISE SHOWN ON THE PLANS.
3. MILLING TO THE BOTTOM OF WHEEL RUTS SHALL NOT BE NECESSARY UNLESS REQUIRED TO OBTAIN SLOPE OR THE DESIGN DEPTH AT CENTERLINE.
4. THE AVERAGE DEPTH OF MILLING IS ESTIMATED TO BE 1/2" BUT MAY VARY IN ISOLATED LOCATIONS.

HOT-MIX ASPHALT SURFACE REMOVAL (VARIABLE DEPTH) DETAIL

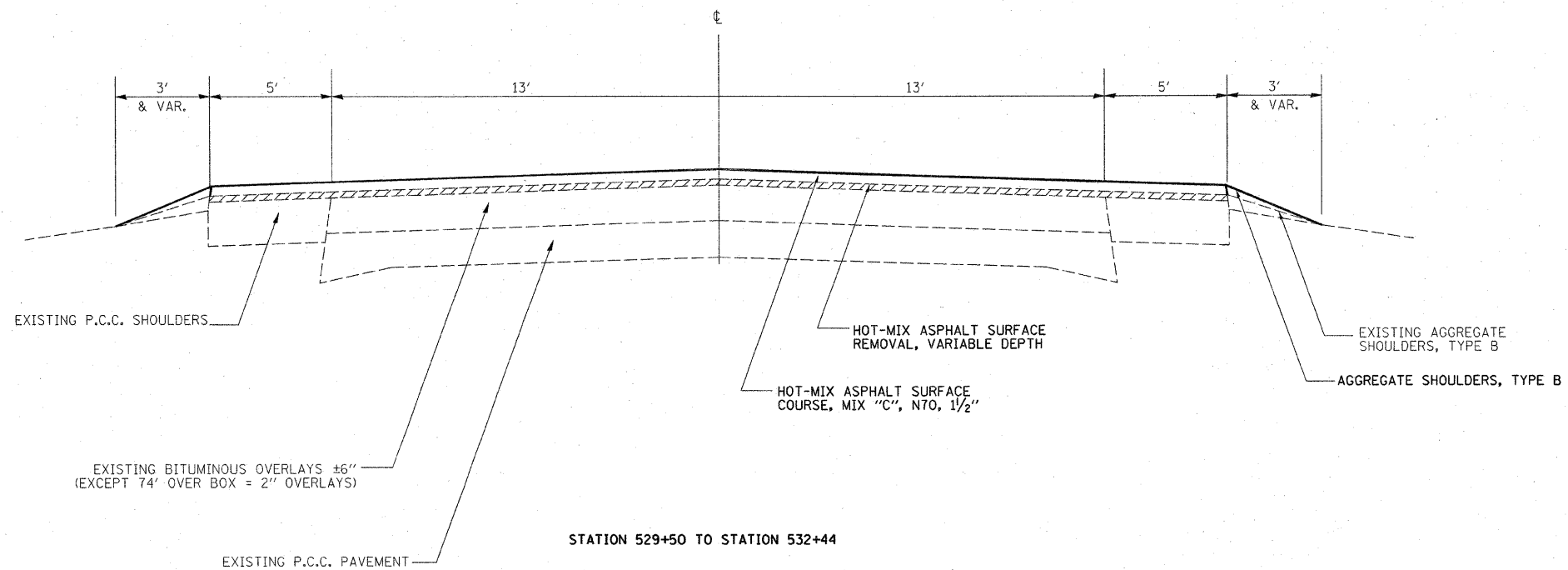
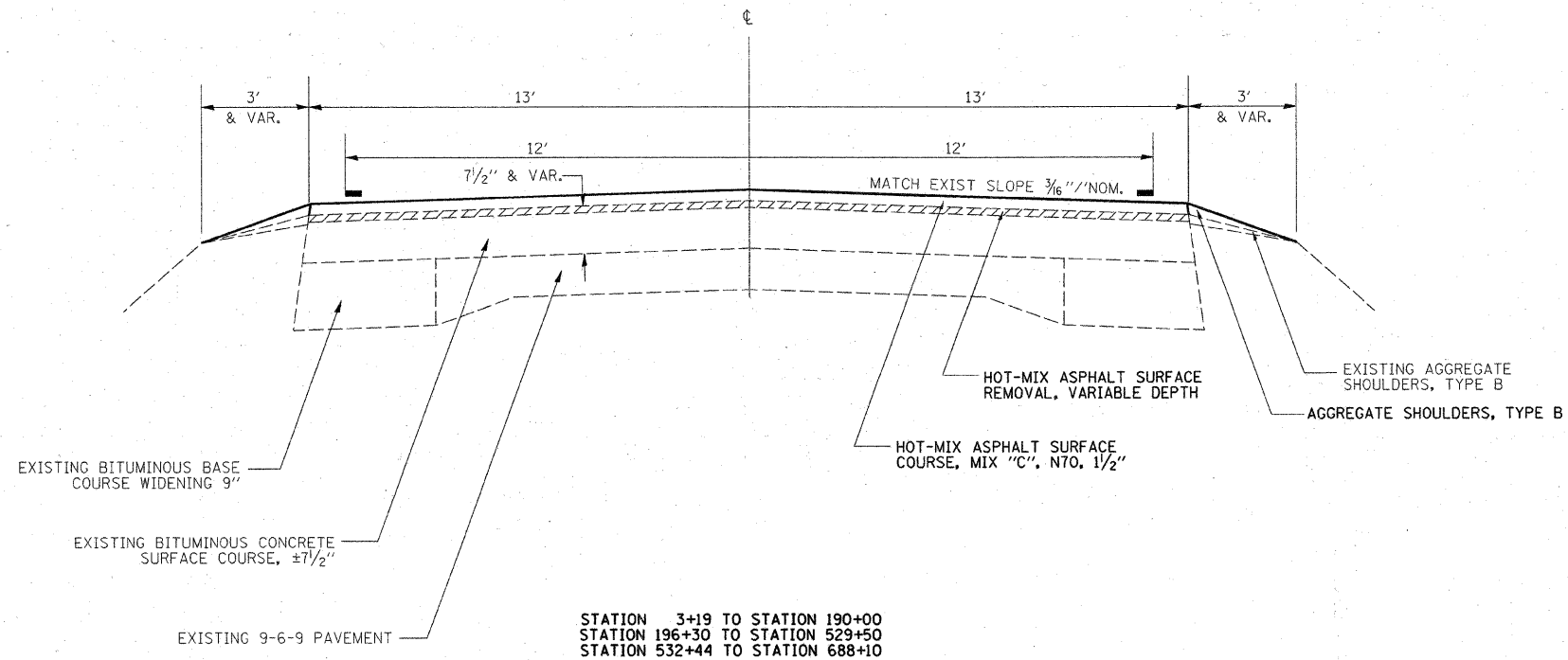


FILE NAME =	USER NAME = teasleyck	DESIGNED -	REVISED -
c:\pwork\p\DOT\TEASLEYCK\0123408\0	74377-ah-typical.dgn	DRAWN -	REVISED -
	PLOT SCALE = 100.0000' / IN.	CHECKED -	REVISED -

STATE OF ILLINOIS
DEPARTMENT OF TRANSPORTATION

TYPICAL SECTIONS

F.A.P. RTE.	SECTION	COUNTY	TOTAL SHEETS	SHEET NO.
766	(105,106)RS-2	SHELBY	12	4
			CONTRACT NO. 74377	



FILE NAME =	USER NAME = teasleyck	DESIGNED -	REVISED -	STATE OF ILLINOIS DEPARTMENT OF TRANSPORTATION	TYPICAL SECTIONS				F.A.P. RTE.	SECTION	COUNTY	TOTAL SHEETS	SHEET NO.		
c:\pwork\pwidot\teasleyck\d0123488.d	74377-shr-typ001.dgn	DRAWN -	REVISED -		SCALE: NA	SHEET NO.	OF	SHEETS	STA.	TO STA.	766	(105,106)RS-2	SHELBY	12	5
	PLOT SCALE = 100,0000' /' IN.	CHECKED -	REVISED -												
	PLOT DATE = 2/6/2009	DATE -	REVISED -												
											CONTRACT NO. 74377				
											ILLINOIS FED. AID PROJECT				

RESURFACING SCHEDULE

STATION TO STATION	LENGTH FOOT	AVERAGE PAVEMENT WIDTH FOOT	AREA SQ YD	HOT-MIX ASPHALT SURFACE REMOVAL, VARIABLE DEPTH SQ YD	HOT-MIX ASPHALT SURFACE REMOVAL, 1 1/2" SQ YD	BITUMINOUS MATERIALS (PRIME COAT) GALLON	AGGREGATE (PRIME COAT) TON	HOT-MIX ASPHALT SURFACE COURSE, MIX "C", NTO, 1 1/2" TON	AGGREGATE SHOULDERS, TYPE B TON	HOT-MIX ASPHALT SURFACE REMOVAL - BUTT JOINT SQ YD	TEMPORARY RAMP SQ YD
0+10.00 TO 0+90.00	80.0	VAR.	884.0	0.0	884.0	88.4	1.8	74.3	0.0	0.0	92.2
0+90.00 TO 3+19.00	229.0	32.0	814.2	814.2	0.0	81.4	1.6	68.4	17.4	0.0	0.0
3+19.00 TO 190+00.00	18681.0	26.0	53967.3	53967.3	0.0	5396.7	107.9	4533.3	1325.7	0.0	0.0
190+00.00 TO 196+30.00	630.0	32.0	2240.0	2240.0	0.0	224.0	4.5	188.2	0.0	0.0	0.0
196+30.00 TO 529+50.00	33320.0	26.0	96257.8	96257.8	0.0	9625.8	192.5	8085.7	2312.7	0.0	0.0
529+50.00 TO 532+44.00	294.0	36.0	1176.0	1176.0	0.0	117.6	2.4	98.8	19.6	0.0	0.0
532+44.00 TO 687+80.00	15536.0	26.0	44881.8	44881.8	0.0	4488.2	89.8	3770.1	1115.3	0.0	0.0
687+80.00 TO 688+10.00	30.0	26.0	86.7	0.0	0.0	8.7	0.2	7.3	2.3	86.7	14.4
MBT'S AND FE APRONS	0.0	0.0	0.0	0.0	0.0	0.0	0.0	112.5	0.0	0.0	0.0
TOTALS			200308.0	199337.0	884.0	20031.0	401.0	16939.0	4793.0	87.0	107.0

SURVEY MONUMENT SCHEDULE

STATION	OFFSET FOOT	PERMANENT SURVEY MARKERS TO BE ADJUSTED EACH	SURVEY MARKER VAULT EACH	SURVEY MONUMENT COVER ASSEMBLY EACH
26+49	0.4 LT		1.0	1.0
53+07	7.0 RT	1.0		
159+23	6.9 RT		1.0	1.0
185+73	2.0 RT	1.0		
212+21	6.6 LT		1.0	1.0
265+26	4.2 LT		1.0	1.0
291+70	0.8 LT		1.0	1.0
318+14	1.4 RT		1.0	1.0
344+53	0.3 LT		1.0	1.0
370+91	3.2 LT		1.0	1.0
423+70	0.0		1.0	1.0
423+70	2.8 RT		1.0	1.0
450+13	0.5 RT	1.0		
476+59	5.3 RT	1.0		
502+97	2.7 RT		1.0	1.0
529+28	0.0		1.0	1.0
529+28	14.5 RT		1.0	1.0
634+22	0.4 LT		1.0	1.0
TOTALS		4.0	14.0	14.0

PAVEMENT MARKING SCHEDULE

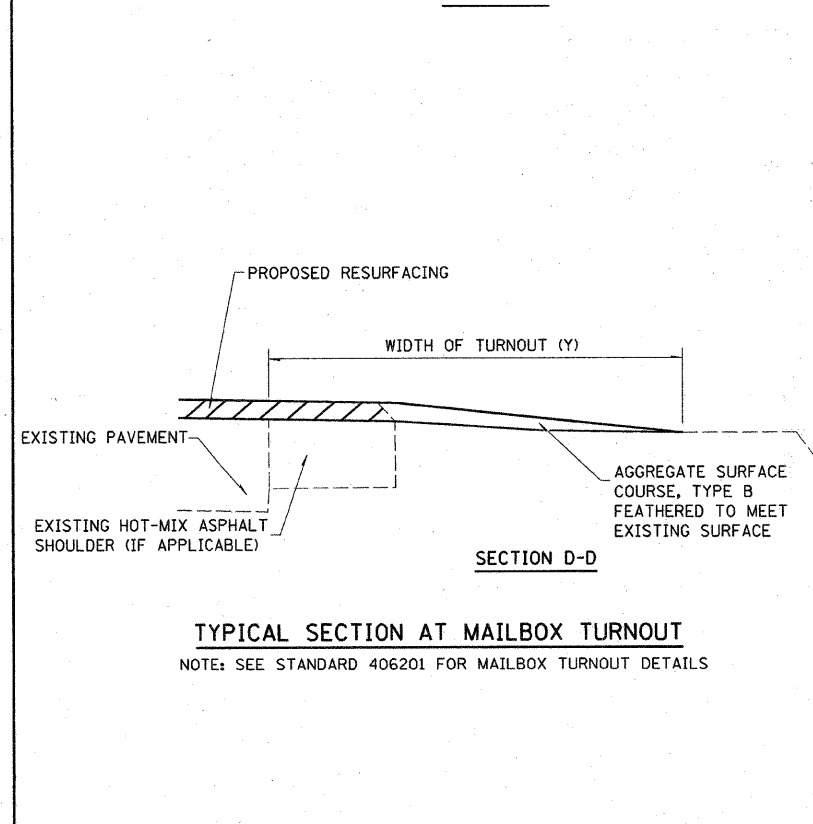
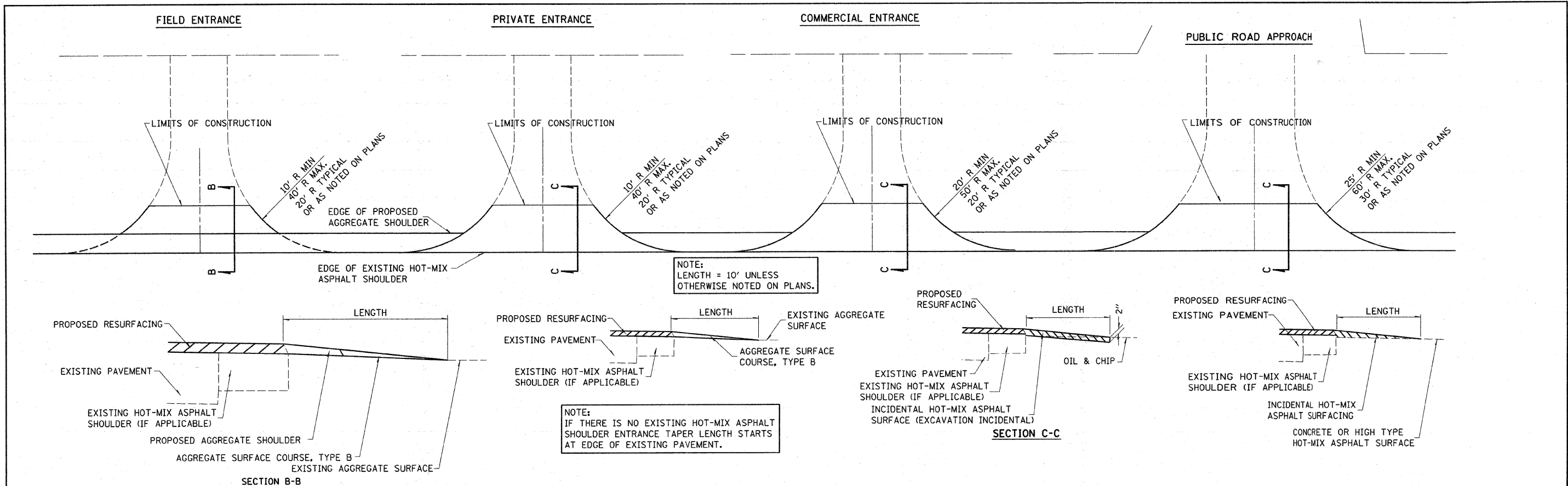
STATION TO STATION	LENGTH FOOT	PAINT PAVEMENT MARKING - LINE 4" FOOT	PAINT PAVEMENT MARKING - LINE 6" FOOT	PAINT PAVEMENT MARKING - LINE 12" FOOT	PAINT PAVEMENT MARKING - LINE 24" FOOT	TEMPORARY PAVEMENT MARKING - LINE 4" FOOT	SHORT-TERM PAVEMENT MARKING FOOT	WORK ZONE PAVEMENT MARKING REMOVAL SQ FT	RAISED REFLECTIVE PAVEMENT MARKER EACH
0+10.00 TO 494+50.00	49440.0	109191.0	155.0	73.0	30.0	109191.0	9888.0	1648.0	618.0
494+50.00 TO 502+15.00	765.0	2486.3	0.0	0.0	0.0	2486.3	152.0	25.3	10.0
502+15.00 TO 505+90.00	375.0	843.8	0.0	0.0	0.0	843.8	72.0	12.0	5.0
505+90.00 TO 513+35.00	745.0	2297.3	0.0	0.0	0.0	2297.3	152.0	25.3	9.0
513+35.00 TO 688+10.00	17475.0	38877.8	0.0	0.0	0.0	38877.8	3496.0	582.7	218.0
TOTALS		153696.0	155.0	73.0	30.0	153696.0	13760.0	2293.0	860.0

Partial Depth Removal (SQ YDS)

Northbound	467
Southbound	632
Totals	1099

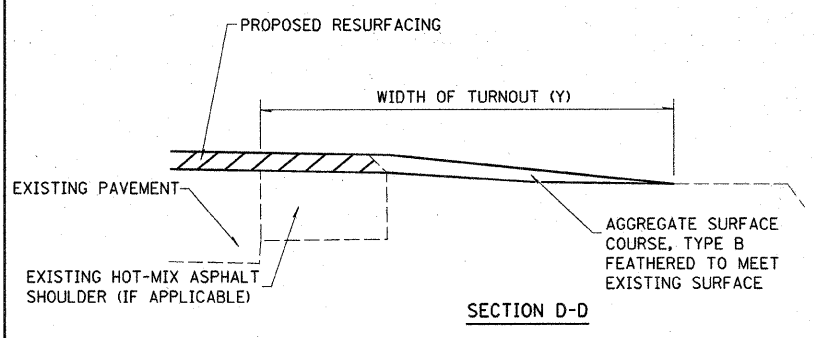
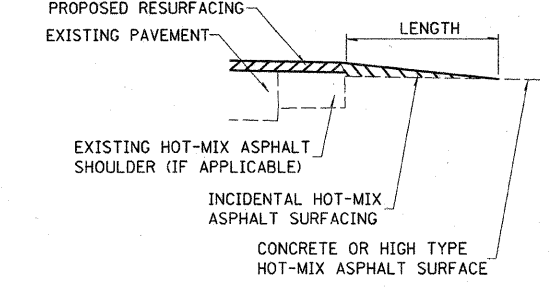
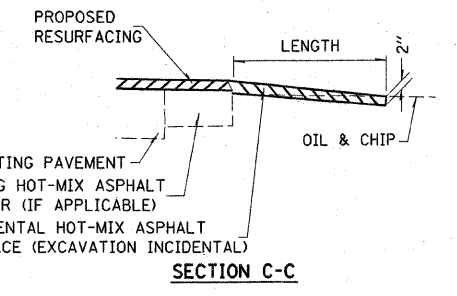
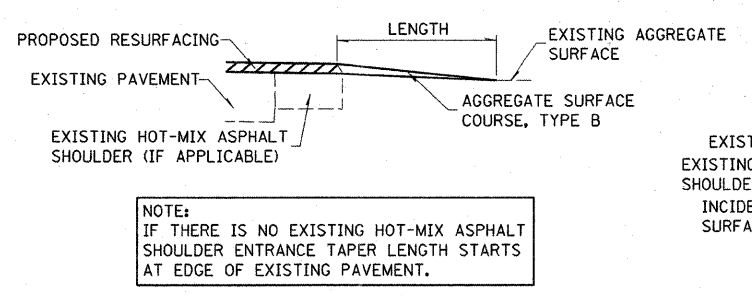
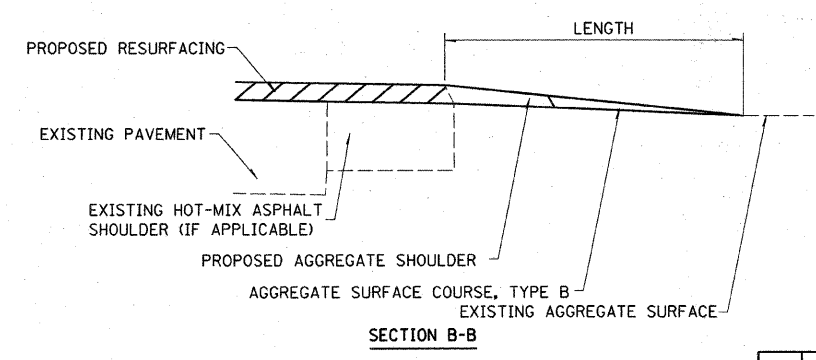
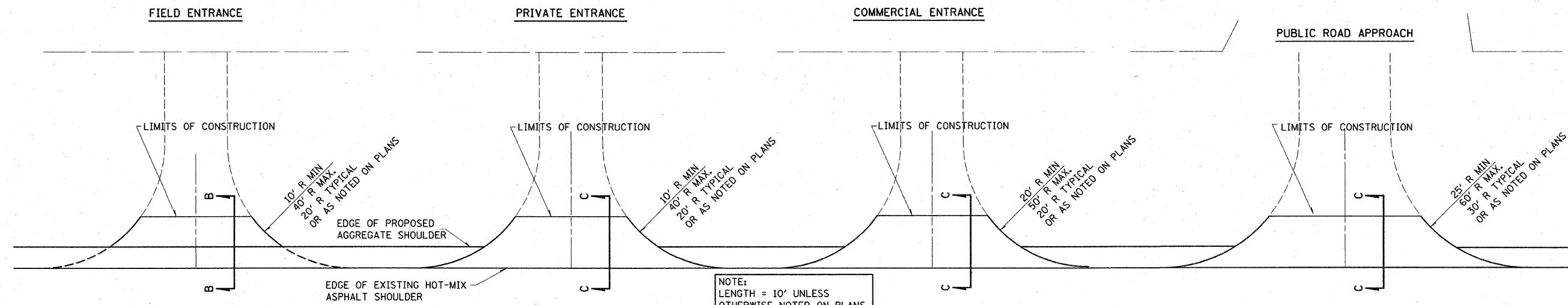
Partial Depth Patching (TONS)

Northbound	275
Southbound	371
Totals	646



SIDE	STATION	TYPE	INCIDENTAL HOT-MIX ASPHALT SURFACING*		AGGREGATE SURFACE COURSE, TYPE B
			TON	TON	
RT	8+50	FE		1.7	
RT	10+50	PE/MBT	6		
RT	13+46	FE		1.7	
LT	19+11	FE		1.7	
LT	39+29	FE		1.7	
RT	39+98	FE		1.7	
RT	47+10	FE		1.7	
LT	49+53	FE		3.5	
RT	53+43	PRA	3.2		
LT	54+50	FE		1.7	
RT	56+19	PE/MBT	5.2		
RT	57+70	FE		1.7	
RT	66+79	FE		1.7	
LT	70+24	FE		1.7	
LT	79+93	PRA	2.8		
RT	79+93	PRA	2.7		
RT	86+70	FE		1.7	
LT	87+91	FE		2	
RT	88+67	FE		2.2	
RT	92+35	PE/MBT	5.3		
LT	92+79	FE		1.7	
RT	106+10	PRA	2.8		
LT	106+10	PRA	2.7		
LT	113+00	FE		1.7	
LT	119+02	FE		1.7	
LT	123+33	PE	2.6		
RT	125+82	FE		1.7	
RT	132+80	PRA	3.5		
LT	137+82	FE		1.7	
RT	147+85	PE	2.7		
RT	159+53	PRA	4.2		
LT	159+53	PRA	4.7		
LT	172+22	FE		1.7	
RT	172+73	FE		1.7	
RT	175+27	FE		1.7	
LT	176+66	PE	1.8		
LT	178+00	PE	2.7		
LT	178+70	PE	2.5		
RT	180+86	PE	2		
RT	182+13	PRA	3		
LT	182+13	PRA	3.2		
LT	183+39	PE	1.9		
LT	183+65	PE	1.8		
RT	184+00	CE	3.7		
LT	184+33	PE	1.7		
RT	185+32	CE	7.6		
RT	186+05	PRA	3.1		
LT	186+05	PRA	3.1		
LT	187+54	PE	1.4		
RT	188+10	PE	2.3		
LT	188+24	PE	1.1		
RT	189+24	PE	1.4		
RT	190+00	PRA	2.9		
LT	190+00	PRA	2.7		
LT	190+24	PE	1.2		
RT	191+15	PE	2.3		
LT	191+68	CE	4		
RT	192+15	CE	3.2		
LT	192+85	CE	3.2		
RT	193+73	PRA	4.1		
LT	193+73	PRA	3.9		
LT	194+89	CE	5.4		
RT	195+70	CE	4		
LT	196+24	PE	1.1		
RT	196+50	PE	3.4		
LT	196+99	PE	1.4		
RT	197+38	PE	2.6		
LT	198+81	PRA	3.4		
RT	199+05	PE	1.8		
LT	199+42	PE	1.3		
RT	199+80	MBT	2.9		
LT	201+00	PE	1.8		
RT	202+60	PRA	2.3		
LT	202+60	PRA	2.3		
LT	203+38	PE	1.6		
LT	203+40	PE	1.4		
LT	204+19	PE	1.9		
LT	205+59	PE	2.2		
RT	205+88	PE	1.7		
LT	206+11	PE	3		
RT	208+00	MBT	2.9		
RT	208+68	PRA	3.1		
LT	208+68	PRA	3.5		
RT	210+25	PE	8.6		
RT	212+23	PRA	2.4		
LT	212+23	PRA	2.4		
LT	213+02	PE	1.3		
RT	213+33	PE/MBT	4.2		
RT	213+88	CE	3.3		
LT	214+08	PE	1.3		
LT	214+75	PE	1.6		
LT	215+42	PE	1.5		
RT	215+50	PE	1.4		
RT	215+86	PE/MBT	4.4		
RT	216+33	CE	2.5		
LT	217+25	PE	1.9		
RT	217+50	CE/MBT	5		
RT	219+57	CE	1.8		
LT	219+68	PE	2.4		
RT	219+92	CE	2.3		
LT	227+55	FE		1.7	
RT	233+20	FE		1.7	
RT	241+52	PE/MBT	6		
LT	244+17	FE		1.7	
LT	245+39	PE	3.5		
RT	260+18	FE		1.7	
RT	265+57	PRA		5.1	
LT	265+57	PRA		4.9	
LT	277+63	MBT		2.9	
RT	277+64	PE		2.6	
LT	291+77	FE		3.7	
RT	291+90	FE		2.1	
LT	298+58	FE		1.7	
RT	298+88	FE		1.7	
LT	305+36	FE		2	
RT	311+43	FE		1.7	
RT	315+75	CE		3.1	
RT	318+50	PRA		5.1	
LT	318+50	PRA		5.1	
LT	320+37	FE		1.7	
RT	321+82	FE		1.7	
LT	327+57	FE		1.7	
LT	336+65	FE		1.7	
RT	337+59	FE		1.9	
LT	344+09	FE		1.7	
LT	345+42	MBT		2.9	

FE - FIELD ENTRANCE PRA - PUBLIC ROAD APPROACH *BITUMINOUS MATERIALS AND AGGREGATE (PRIME COAT) FOR ENTRANCES AND PUBLIC ROAD APPROACHES SHALL BE CONSIDERED INCIDENTAL TO INCIDENTAL HOT-MIX ASPHALT SURFACING.
PE - PRIVATE ENTRANCE MBT - MAILBOX TURNOUT
CE - COMMERCIAL ENTRANCE



TYPICAL SECTION AT MAILBOX TURNOUT
NOTE: SEE STANDARD 406201 FOR MAILBOX TURNOUT DETAILS

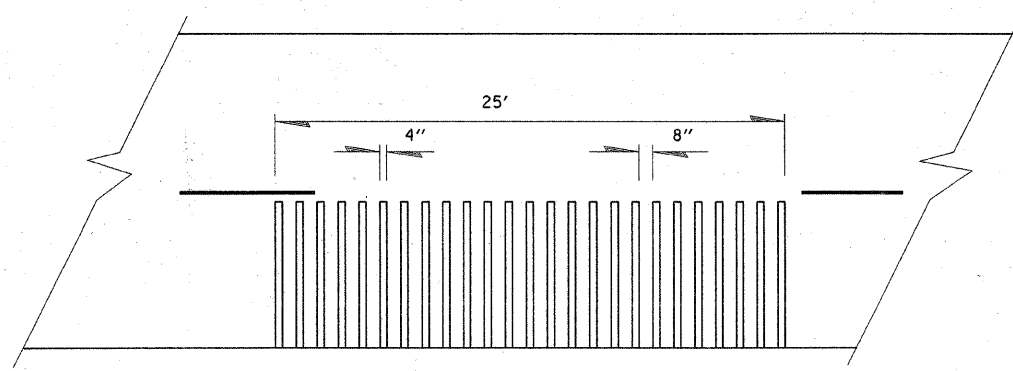
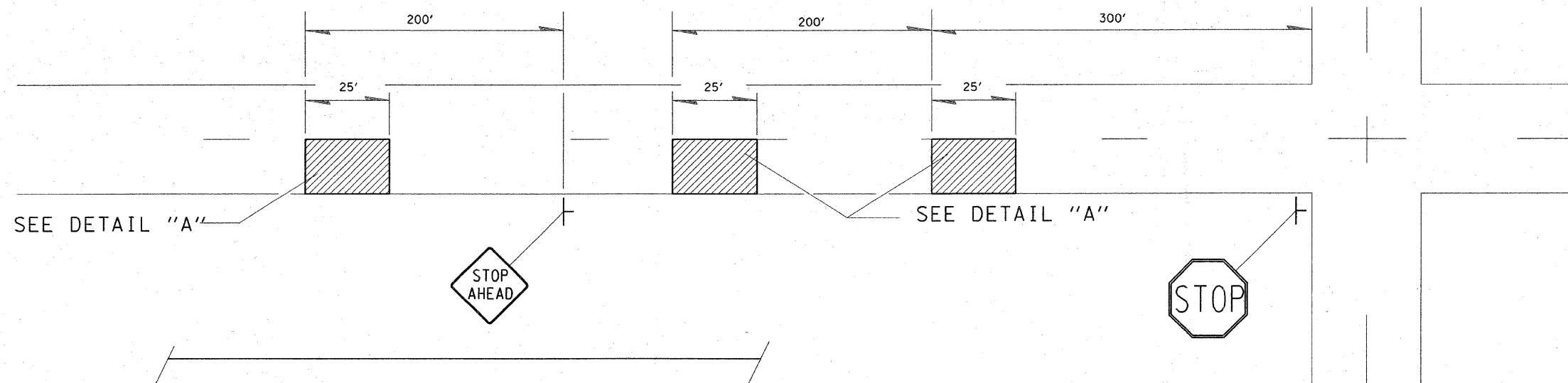
SIDE	STATION	TYPE	INCIDENTAL HOT-MIX ASPHALT SURFACING*		SIDE	STATION	TYPE	INCIDENTAL HOT-MIX ASPHALT SURFACING*		SIDE	STATION	TYPE	INCIDENTAL HOT-MIX ASPHALT SURFACING*		SIDE	STATION	TYPE	INCIDENTAL HOT-MIX ASPHALT SURFACING*	
			TON	TON				TON	TON				TON	TON				TON	TON
LT	346+31	PE	2.6		RT	436+50	PE/MBT	5.8		LT	513+05	CE	4.2		RT	647+64	FE		1.7
LT	353+07	FE		1.7	LT	436+72	FE		1.7	LT	513+39	PE	1.6		RT	647+66	FE		1.7
LT	357+71	FE		1.7	LT	437+58	FE		1.9	LT	513+84	PE	1.7		RT	655+50	FE		1.7
RT	360+00	FE		1.7	LT	445+69	FE		1.7	RT	514+08	PE	1.6		LT	665+48	FE		1.7
RT	371+54	PRA	4		RT	451+13	FE		1.7	RT	516+22	FE		1.7	RT	666+95	FE		1.7
LT	371+54	PRA	10.3		LT	463+23	PE		2.9	LT	517+13	CE	4.2	1.7	LT	682+00	PE/MBT	4.7	
LT	386+24	FE		1.7	RT	463+49	FE		1.7	RT	524+38	CE	4.5		RT	682+85	FE		1.7
RT	386+73	FE		1.7	RT	463+79	MBT	2.9		LT	526+25	PE	2		RT	687+41	PRA	3.6	
LT	395+58	FE		1.7	RT	476+70	PRA	6.6		RT	527+27	CE	2.7		LT	687+41	PRA	3.6	
RT	396+11	PE	2		LT	476+40	PRA	4.4		RT	528+77	CE	2.8		Totals			443	145
RT	402+92	FE		1.7	LT	479+39	FE		1.7	RT	529+41	PRA	4		LT	607+76	PRA	6.4	
RT	410+73	FE		1.7	LT	489+30	FE		1.7	RT	530+59	FE		2	LT	610+95	FE		1.7
LT	412+33	FE		1.7	RT	496+00	FE		1.7	RT	532+35	FE		1.7	LT	619+41	FE		1.7
RT	417+14	PE	2.1		LT	496+90	PE	2.6		LT	541+12	MBT	2.9		LT	621+10	FE		1.7
RT	424+10	PRA	3.8		RT	498+30	MBT	2.9		LT	541+74	PE	1.9		LT	621+31	FE		1.8
LT	424+10	PRA	3.3		RT	499+78	CE	5.1		LT	549+92	PE	2.2		RT	627+37	FE		1.7
LT	425+60	PE	3.2		LT	502+61	FE		2	RT	550+28	FE		1.7	RT	634+20	PRA	3.5	
LT	427+61	PE	2.3		RT	505+15	CE	4.2		LT	550+47	MBT	2.9		LT	634+20	PRA	3.5	
LT	428+13	PE	2.3		RT	509+30	CE	5.5		RT	555+00	FE		2.2	RT	646+26	PE	2.1	
LT	429+10	PE	4		RT	512+00	PRA	7.8		LT	558+70	FE		2.1	RT	646+80	PE	2.1	
RT	429+70	MBT	2.9		LT	512+17	CE	4.1		RT	564+33	FE		1.7					

FE - FIELD ENTRANCE PRA - PUBLIC ROAD APPROACH
PE - PRIVATE ENTRANCE MBT - MAILBOX TURNOUT
CE - COMMERCIAL ENTRANCE

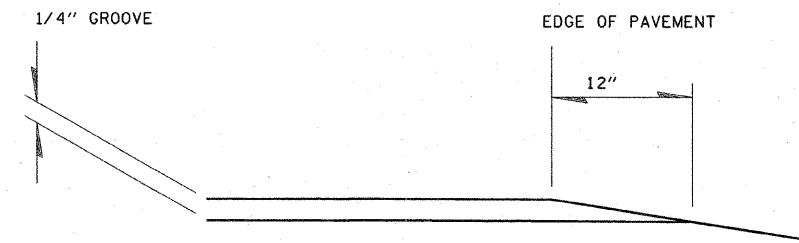
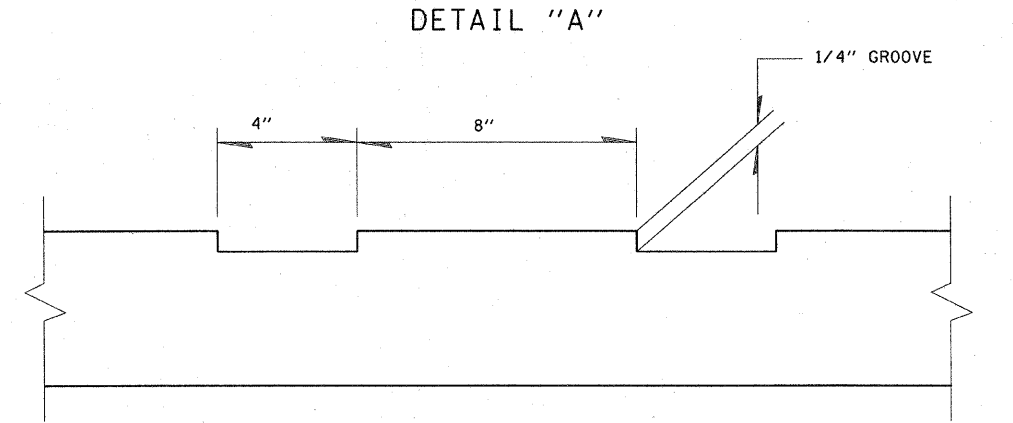
*BITUMINOUS MATERIALS AND AGGREGATE (PRIME COAT) FOR ENTRANCES AND PUBLIC ROAD APPROACHES SHALL BE CONSIDERED INCIDENTAL TO INCIDENTAL HOT-MIX ASPHALT SURFACING.

ISSUED: 08-03-99
MODIFIED: 03-13-07

TYPICAL RUMBLE STRIP APPLICATION IN ADVANCE OF AN INTERSECTION

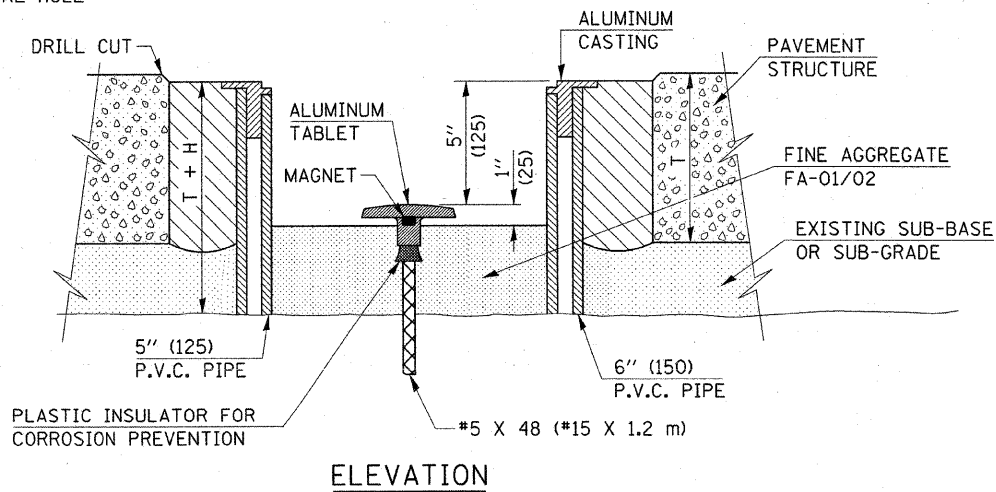
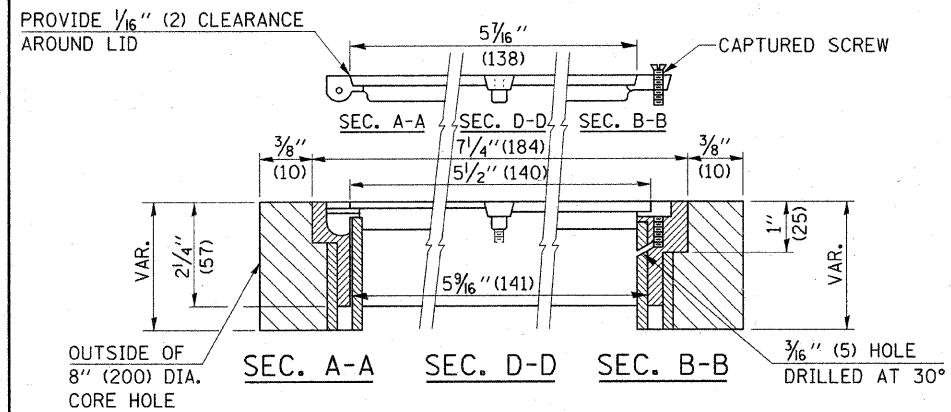
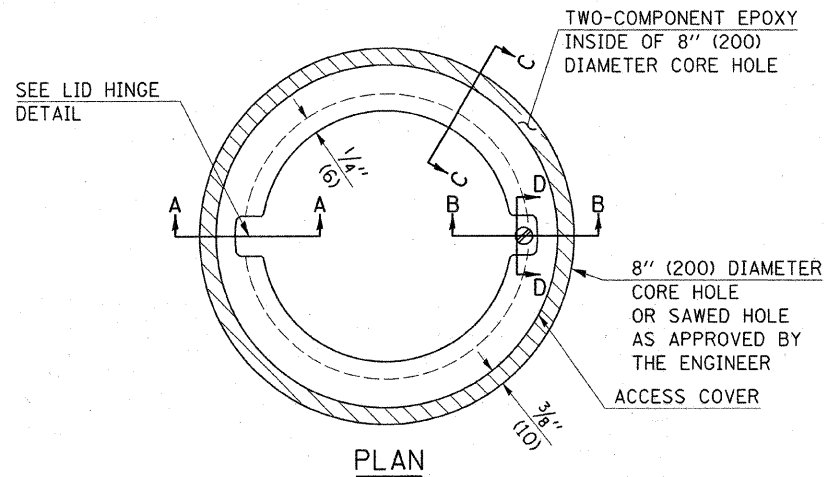


NOTE: THE 25 FEET RUMBLE AREA HAS 4" WIDE GROOVES SAWED INTO THE PAVEMENT, SEPARATED BY 8" OF EXISTING PAVEMENT. THE SAW CUTS SHALL EXTEND 12" INTO THE SHOULDER TO ALLOW FOR DRAINAGE.



FILE NAME =	USER NAME = teasleyck	DESIGNED -	REVISED - MMO 12-99	STATE OF ILLINOIS DEPARTMENT OF TRANSPORTATION	TYPICAL RUMBLE STRIP APPLICATION			F.A.P. RTE.	SECTION	COUNTY	TOTAL SHEETS	SHEET NO.
cr:\pwork\PWIDOT\TEASLEYCK\08123408\074377-shr-details.dgn	DRAWN -	REVISED -	766					(105,106)RS-2	SHELBY	12	9	
PLT SCALE = 100.0000 ' / IN.	CHECKED -	REVISED -	SCALE: SHEET NO. OF SHEETS STA. TO STA.			CONTRACT NO. 74377						
PLT DATE = 2/6/2009	DATE -	REVISED -				ILLINOIS FED. AID PROJECT						

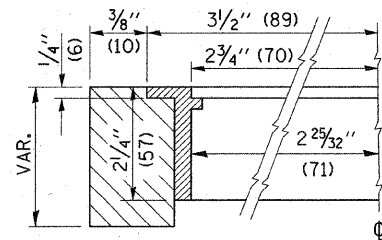
TO BE INSTALLED IN RIGID OR COMPOSITE PAVEMENT FOR PRESERVING LAND SURVEY MONUMENTS (SECTION OR SUBSECTION CORNERS)



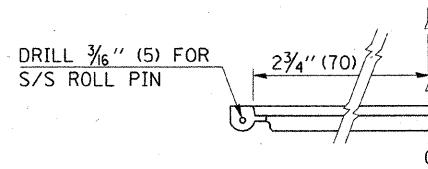
LEGEND

- ALUMINUM CASTING
- 5" (125) OR 6" (150) P.V.C. PIPE
- TWO-COMPONENT EPOXY

T = THICKNESS OF PAVEMENT STRUCTURE
 H = THE THICKNESS OF THE SUB-BASE GRANULAR + 1" (25)



SECTION C-C



LID HINGE DETAIL

SPECIFICATIONS FOR ACCESS COVER FOR USE WITH SURVEY MARKER VAULT(S) AND SURVEY MARKER COVER ASSEMBLY(S): THE ACCESS COVER WILL BE CAST FROM A SPECIAL ALUMINUM ALLOY THAT IS COMPARABLE TO BRONZE IN HARDNESS. THE ACCESS COVER SHALL BE SPECIALLY ENGINEERED AND DESIGNED TO PROVIDE A SNUG FIT, INCORPORATING EQUIDISTANT LOCKING RIDGES, INSIDE A STANDARD 6" (150 mm) DIAMETER, OR OUTSIDE A STANDARD 5" (125 mm) DIAMETER, SCHEDULE 40 PVC PIPE. THE ACCESS COVER SHALL HAVE SPECIAL UNIFORM 1" (25 mm) THICK TOP SURFACE TO PERMIT INFORMATION TO BE EASILY MACHINE-STAMPED INTO IT. THE ACCESS COVER SHALL INCLUDE A STAINLESS CAPTURED SCREW AND AN OPPOSING RECESSED HINGE ASSEMBLY AS ITS LOCKING MECHANISM. THE ACCESS COVER SHALL INCORPORATE A SPECIAL ACCESS HOLE FOR CLEANING AND DRAINAGE, DRILLED AT 30° INSIDE THE RING OF THE ACCESS COVER, TO THE DRILLED AND TAPPED HOLE PROVIDED FOR THE STAINLESS CAPTURED SCREW. COMPOSITION: ALUMINUM 92-93%; MAGNESIUM 6.5-7.5%. STRENGTH: YIELD - 19,000-21,000 PSI (131-145 MPa); TENSILE - 38,000-44,000 PSI (262-303 MPa); ELONGATION - 10-15% IN 2" (50 mm). SPECIFICATIONS: ALLOY 535.0; QQ-A-601Es. NO EXCEPTIONS.

RE-BAR-SURVEY MARKER, TYPE I, (SPECIAL) TO BE FURNISHED BY THE CONTRACTOR AND SET BY AN ILLINOIS PROFESSIONAL LAND SURVEYOR (SEE SPECIAL DETAIL SHEET FOR ALUMINUM TABLET AND RE-BAR SPECIFICATIONS).

BILL OF MATERIAL

ALUMINUM CASTING OF THE DIMENSIONS AND SPECIFICATIONS SHOWN OR OTHER SUBJECT TO ENGINEER'S APPROVAL OF SHOP DRAWINGS, 5" OR 6" (125 mm OR 150 mm) DIAMETER P.V.C. PIPE, SCHEDULE 40, ALUMINUM TABLET, STAMPED IN ACCORDANCE WITH STANDARD 667101. 5/8" X 48" (#15 X 1.2 m) RE-BAR, EPOXY AND FA-01/02 AGGREGATE.

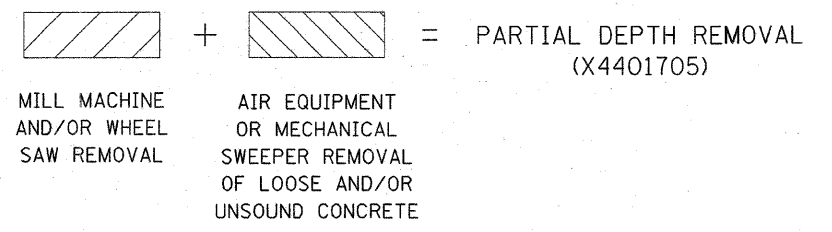
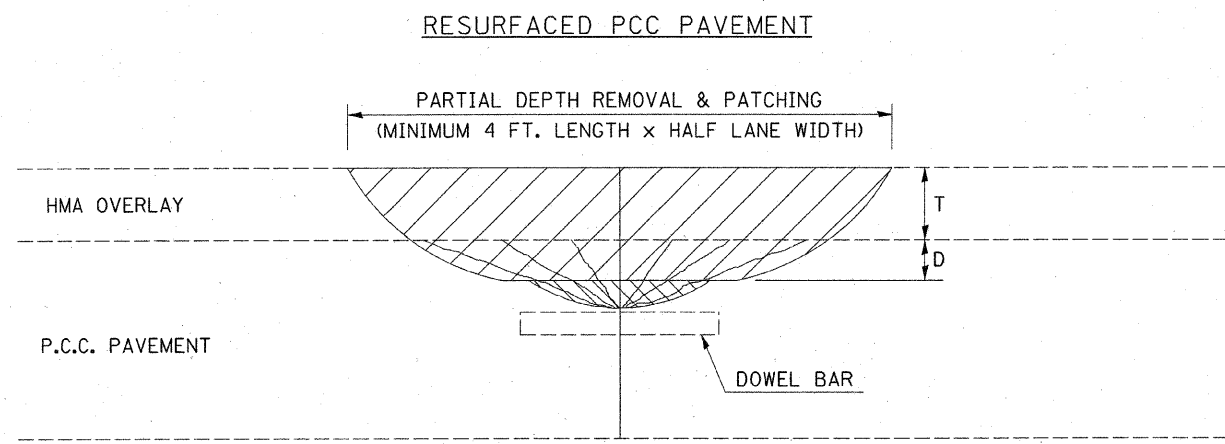
GENERAL NOTES

1. ALUMINUM CASTING SHALL BE EITHER PLACED OVER A 5" (125 mm) P.V.C. PIPE OR INSIDE OF A 6" (150 mm) P.V.C. PIPE.
2. BACKFILL WITH FINE AGGREGATE - FA-01/02.
3. WORK SHALL NOT START ON THIS ITEM UNTIL THE FINAL LIFT OF SURFACE HAS BEEN COMPLETED.
4. THIS WORK WILL BE PAID FOR AT THE CONTRACT UNIT PRICE EACH FOR SURVEY MARKER VAULT WHICH PRICE SHALL INCLUDE ALL LABOR AND MATERIAL AS SPECIFIED INCLUDING CORING, EPOXY AND FA-01/02 AGGREGATE AND NO ADDITIONAL COMPENSATION WILL BE ALLOWED.
5. THE CASTING SHALL BE ANCHORED IN THE 8" (200 mm) DIAMETER CORE HOLE WITH TWO-COMPONENT EPOXY CONFORMING TO APPLICABLE PORTIONS OF ARTICLE 1025.01 OF THE STANDARD SPECIFICATIONS.
6. ALL SURVEY MARKER (VAULTS) SHALL BE PLACED 1/4" (6 mm) ± BELOW THE FINAL SURFACE.
7. THE 8" (200 mm) DIAMETER CORE HOLE SHALL BE SUBJECT TO THE APPROVAL OF THE ENGINEER.

Note: All dimensions are in INCHES (millimeters) unless otherwise shown.

DISTRICT 7 DETAIL NO. X0301232

FILE NAME =	USER NAME = teasleyck	DESIGNED -	REVISED -	STATE OF ILLINOIS DEPARTMENT OF TRANSPORTATION	SURVEY MARKER VAULT	F.A.P. RTE.	SECTION	COUNTY	TOTAL SHEETS	SHEET NO.	
c:\pwork\p\WIDOT\TEASLEYCK\d0123408\074377-ahd-deta.tbl.dgn		DRAWN -	REVISED -			766	(105,106)RS-2	SHELBY	12	10	
		CHECKED -	REVISED -			CONTRACT NO. 74377					
		DATE -	REVISED -			ILLINOIS FED. AID PROJECT					



GENERAL NOTES

ALL VOLUME OF PARTIAL DEPTH REMOVAL SHALL BE REPLACED WITH HOT-MIX ASPHALT (HMA) AND PAID FOR AT THE CONTRACT UNIT PRICE PER TON FOR PARTIAL DEPTH PATCHING.

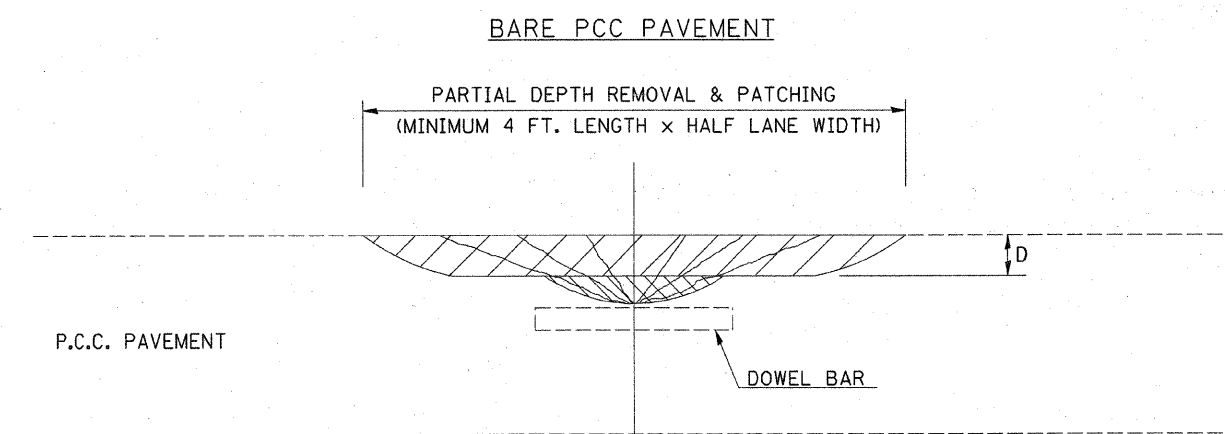
T = THICKNESS OF HMA OVERLAY(S). SEE EXISTING TYPICAL CROSS SECTION.

SEE GENERAL NOTES FOR MIXTURE REQUIREMENTS.

HMA REPLACEMENT IN RESURFACED PCC PAVEMENT LOCATIONS SHALL BE ACCORDING TO SECTION 406 OF THE STANDARD SPECIFICATIONS.

D = DEPTH OF PARTIAL DEPTH REMOVAL INTO EXISTING PCC PAVEMENT. (3" (75 mm) ± OR TO SOUND CONCRETE)

TRANSVERSE CONTRACTION JOINT SHOWN - OTHER LOCATIONS SIMILAR.



Note: All dimensions are in INCHES (millimeters) unless otherwise shown.

FILE NAME =	USER NAME = teasleyck	DESIGNED -	REVISED -
c:\p_wor\pwidot\TEASLEYCK\0123408\074377.sht-details.dgn	74377.sht-details.dgn	DRAWN -	REVISED -
PLOT SCALE = 100.0000' / IN.		CHECKED -	REVISED -
PLOT DATE = 2/6/2009		DATE -	REVISED -

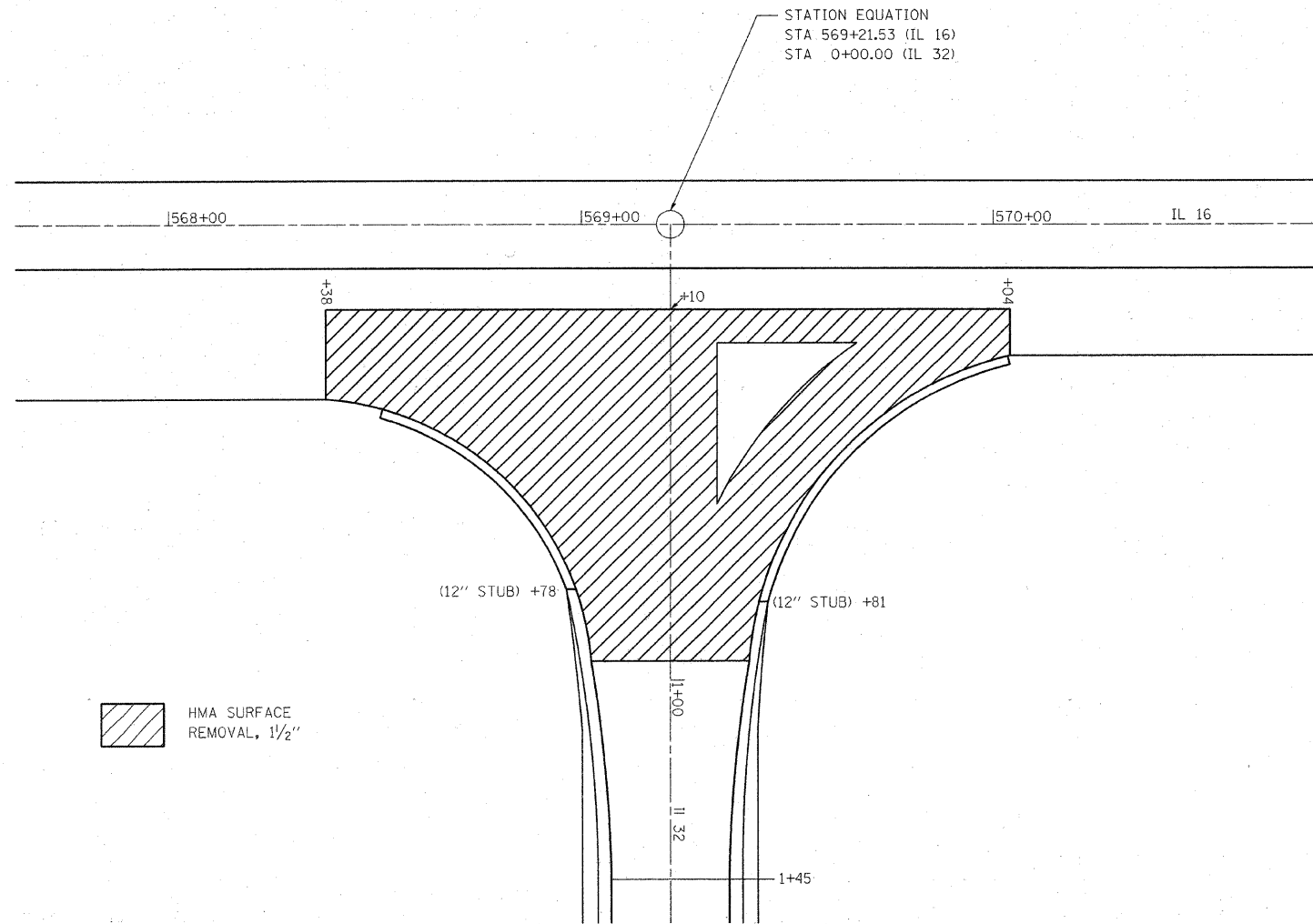
STATE OF ILLINOIS
DEPARTMENT OF TRANSPORTATION

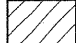
PCC PARTIAL DEPTH HOT-MIX ASPHALT PATCHING

SCALE:	SHEET NO.	OF	SHEETS	STA.	TO STA.
--------	-----------	----	--------	------	---------

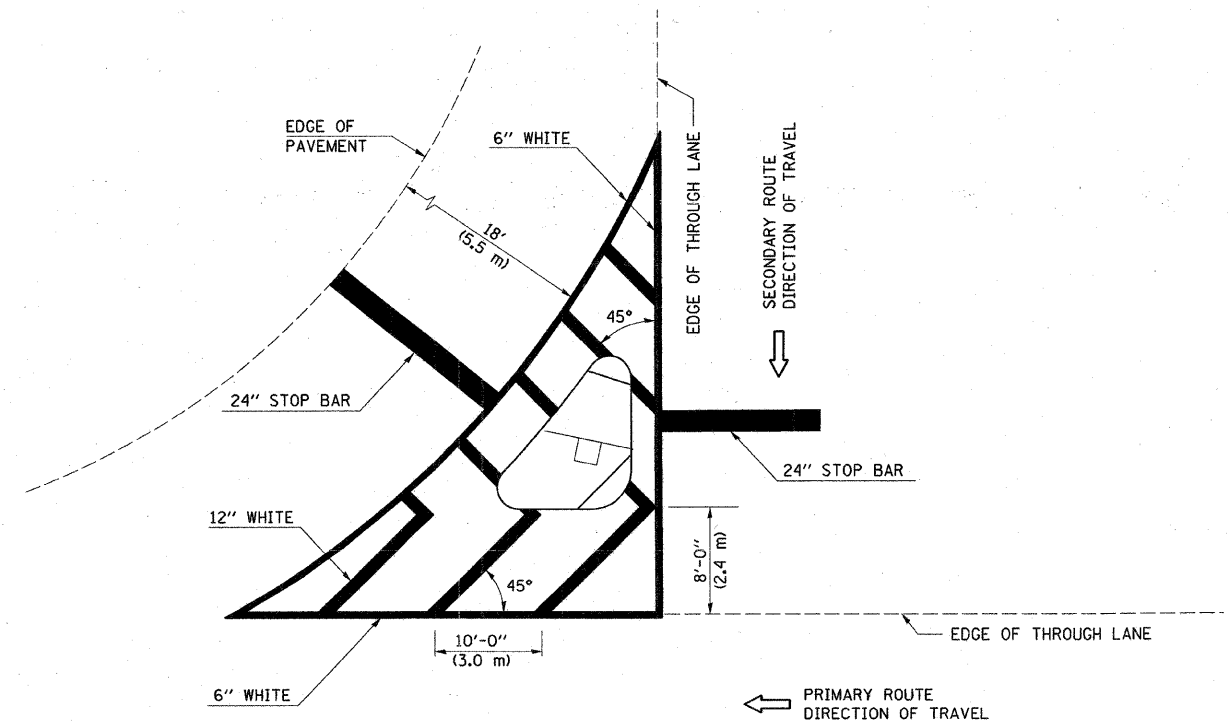
DISTRICT 7 DETAIL NO. XX442100				
F.A.P. RTE.	SECTION	COUNTY	TOTAL SHEETS	SHEET NO.
766	(105,106)RS-2	SHELBY	12	11
CONTRACT NO. 74377			ILLINOIS FED. AID PROJECT	

DETAIL OF INTERSECTION FOR IL 16 & IL 32



 HMA SURFACE REMOVAL, 1/2"

STRIPING DETAIL



FILE NAME =	USER NAME = teasleyck	DESIGNED -	REVISED -	STATE OF ILLINOIS DEPARTMENT OF TRANSPORTATION	INTERSECTION DETAIL			F.A.P. RTE.	SECTION	COUNTY	TOTAL SHEETS	SHEET NO.	
c:\pwork\FWIDOT\TEASLEYCK\d0123409\074377-sht-details.dgn		DRAWN -	REVISED -		SCALE:	SHEET NO.	OF SHEETS	STA.	TO STA.	766	(105,106)RS-2	SHELBY	12 12
		CHECKED -	REVISED -										CONTRACT NO. 74377
		DATE -	REVISED -										ILLINOIS FED. AID PROJECT