

STATE OF ILLINOIS
DEPARTMENT OF TRANSPORTATION

DIVISION OF HIGHWAYS

PROPOSED
HIGHWAY PLANS

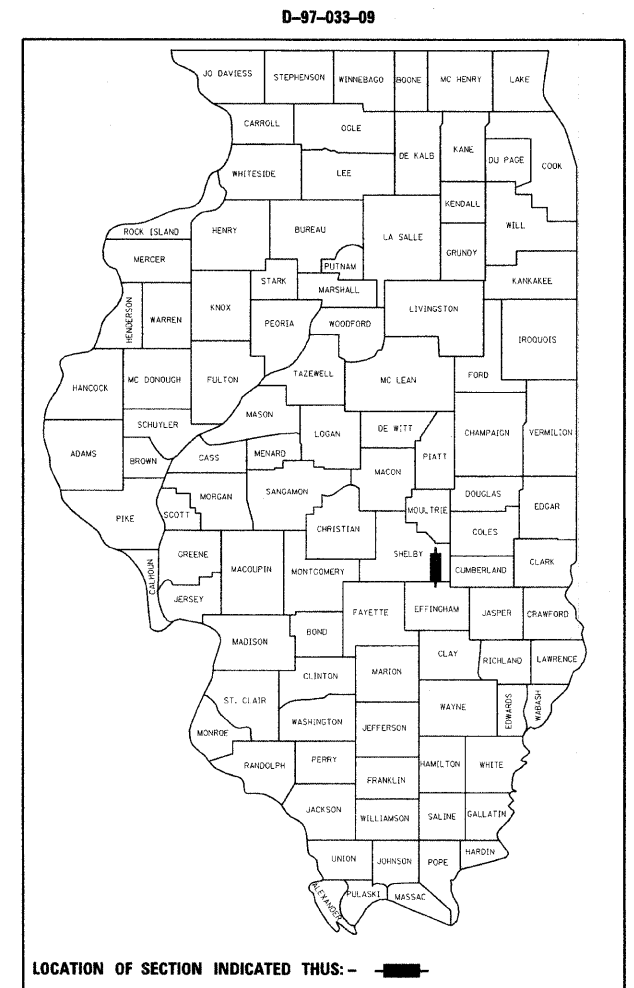
FAP ROUTE 766 (ILL. ROUTE 32)
SECTION (105,106)RS-2
PROJECT: ESP-0766(005)
RESURFACING
SHELBY COUNTY

C-97-062-09

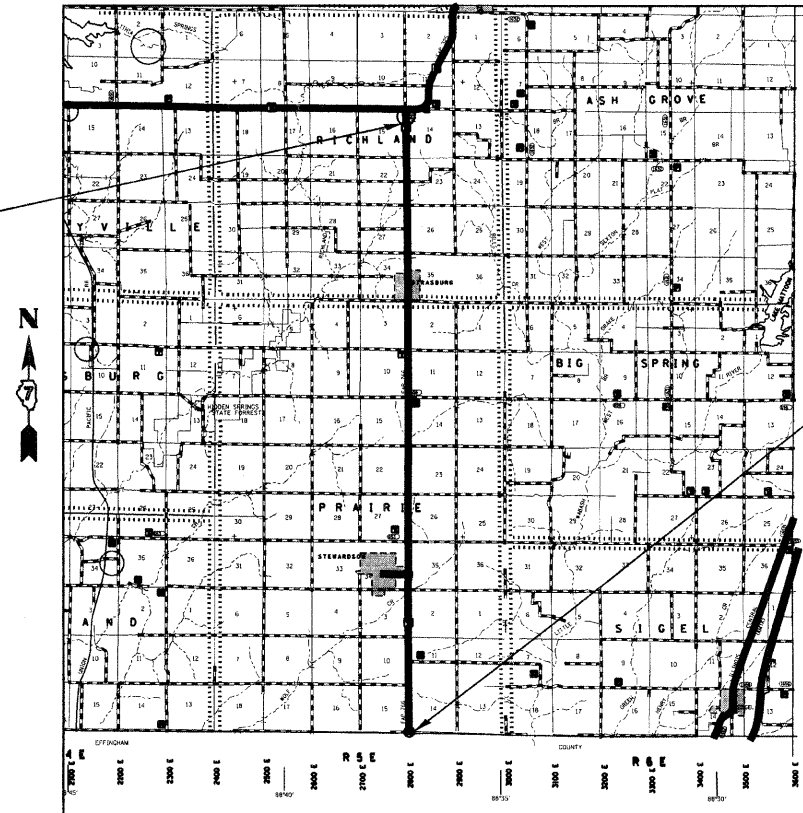
F.A.P. RTE.	SECTION	COUNTY	TOTAL SHEETS	SHEET NO.
766	(105,106)RS-2	SHELBY	12	1
		ILLINOIS	CONTRACT NO. 74377	

FOR INDEX OF SHEETS, SEE SHEET NO. 2

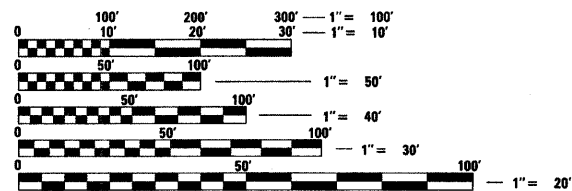
2008 ADT = 3350



FAP ROUTE 766
SECTION (105, 106)RS-2
SHELBY COUNTY
PROJECT BEGINS:
STATION 0+10



FAP ROUTE 766
SECTION (105, 106)RS-2
SHELBY COUNTY
PROJECT ENDS:
STATION 688+10



FULL SIZE PLANS HAVE BEEN PREPARED USING STANDARD ENGINEERING SCALES. REDUCED SIZED PLANS WILL NOT CONFORM TO STANDARD SCALES. IN MAKING MEASUREMENTS ON REDUCED PLANS, THE ABOVE SCALES MAY BE USED.

J.U.L.I.E.
JOINT UTILITY LOCATION INFORMATION FOR EXCAVATION
1-800-892-0123
OR 811

PROJECT ENGINEER: TOM RONAN
PROJECT MANAGER: JASON MYERS

CONTRACT NO. 74377

GROSS LENGTH = 68,800 FT. = 13.030 MILE
NET LENGTH = 68,800 FT. = 13.030 MILE

STATE OF ILLINOIS
DEPARTMENT OF TRANSPORTATION
DIVISION OF HIGHWAYS

SUBMITTED February 6, 2009

Roger L. Swislock
DEPUTY DIRECTOR OF HIGHWAYS, REGION ENGINEER

March 13, 2009
Charles G. Ingersoll
ENGINEER OF DESIGN AND ENVIRONMENT

March 13, 2009
Christine M. Reed
DIRECTOR OF HIGHWAYS, CHIEF ENGINEER

PRINTED BY THE AUTHORITY
OF THE STATE OF ILLINOIS