

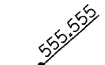
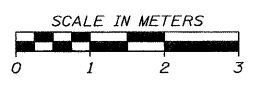
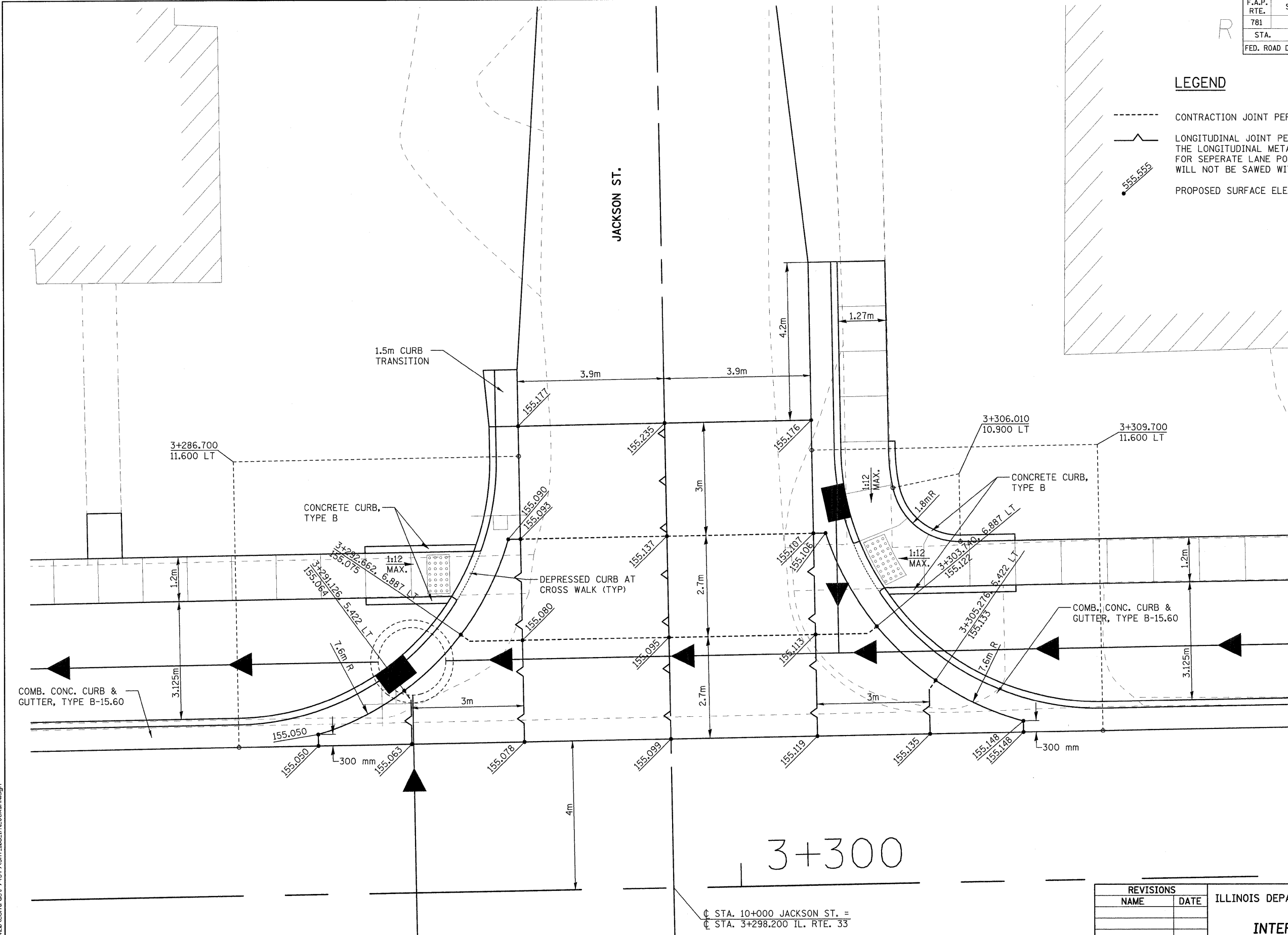


F.A.P. RTE.	SECTION	COUNTY	TOTAL SHEETS	SHEET NO.
781	2ZRS-1	CRAWFORD	191	106
STA.		TO STA.		
FED. ROAD DIST. NO.		ILLINOIS	FED. AID PROJECT	

**LEGEND**

-  CONTRACTION JOINT PER STD. 420001
-  LONGITUDINAL JOINT PER STD. 420001  
THE LONGITUDINAL METAL JOINT TYPE C MAY BE USED FOR SEPERATE LANE POURS, THE LONGITUDINAL JOINT WILL NOT BE SAWED WITH SEPERATE LANE POURS.
-  PROPOSED SURFACE ELEVATION



3+300

⊕ STA. 10+000 JACKSON ST. =  
⊕ STA. 3+298.200 IL. RTE. 33

REVISIONS		ILLINOIS DEPARTMENT OF TRANSPORTATION
NAME	DATE	
		<p><b>INTERSECTION DETAIL JACKSON ST.</b></p> <p>SCALE AS SHOWN      DRAWN BY EDW DATE FEBRUARY 6, 2009      CHECKED BY LWJ</p>

PLOT DATE = 2/5/2009  
 FILE NAME = H:\V4420\Contract 74349\GHT\_106.in\JokanN.dgn

H. M. & G. NO. 4420