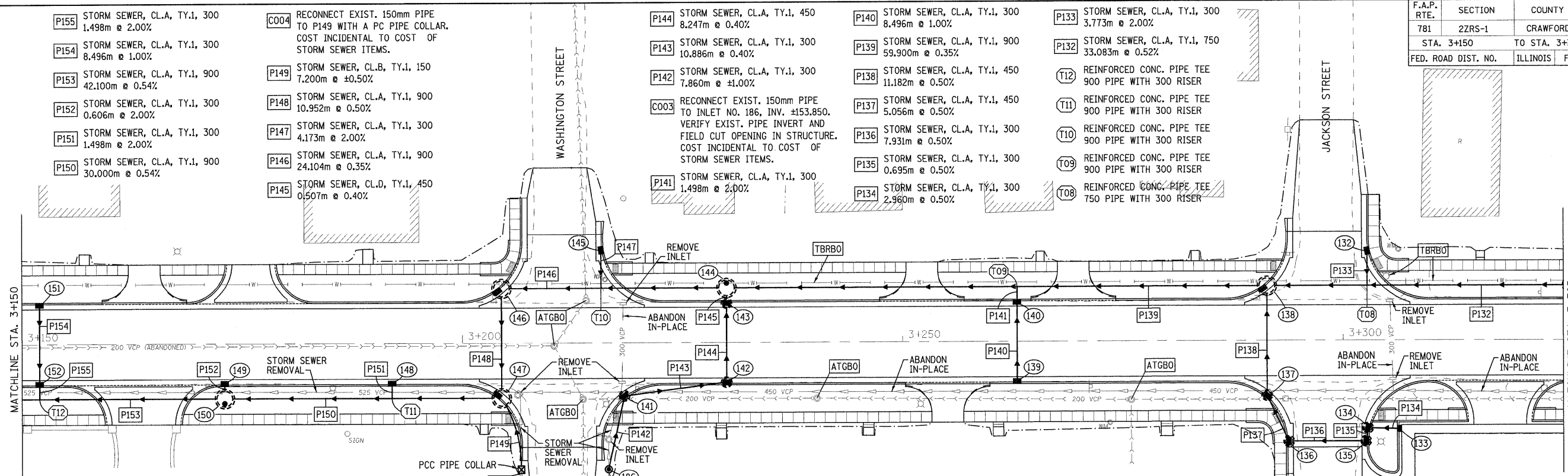
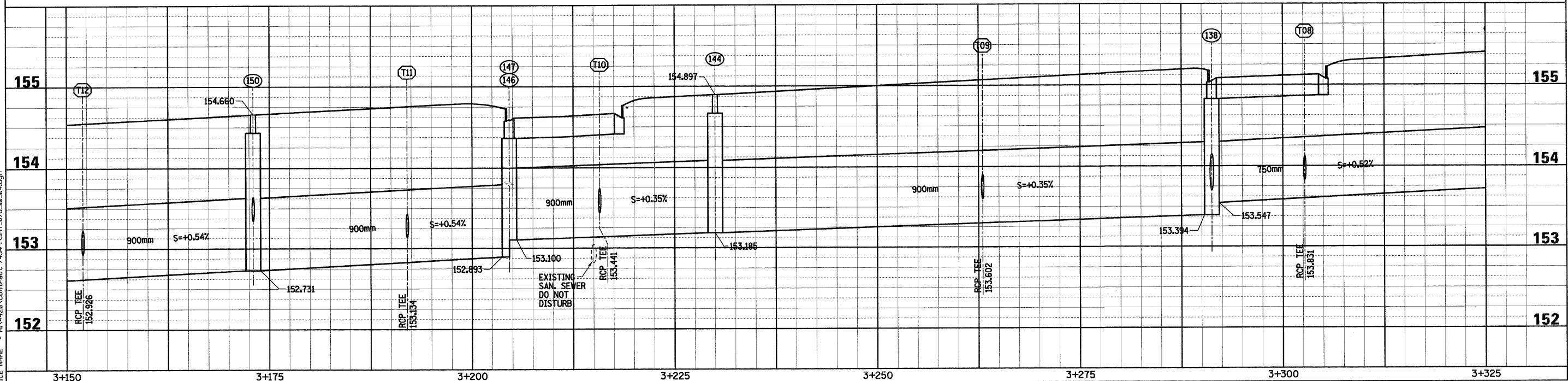
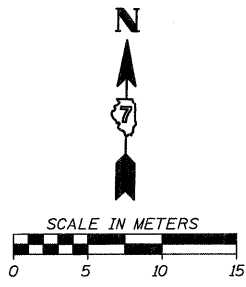


F.A.P. RTE.	SECTION	COUNTY	TOTAL SHEETS	SHEET NO.
781	2ZRS-1	CRAWFORD	191	78
STA. 3+150		TO STA. 3+325		
FED. ROAD DIST. NO.	ILLINOIS	FED. AID PROJECT		



- 152 INLET TY.A, TY.3 F&G  
STA. 3+152.000, 4.475m RT.  
GRATE 154.303  
INV. 152.596
- 148 INLET TY.A, TY.3 F&G  
STA. 3+192.000, 4.475m RT.  
GRATE 154.511  
INV. 153.164
- 145 INLET TY.A, TY.3 F&G  
STA. 3+215.745, 10.600m LT.  
GRATE 154.589  
INV. 153.525
- 142 INLET TY.B, RESTRICTED DEPTH  
0.9m DIA., TY.3 F&G  
STA. 3+230.000, 4.475m RT.  
GRATE 154.708  
INV.(N) 153.524  
INV.(S) 153.676
- 139 INLET TY.A, TY.3 F&G  
STA. 3+263.000, 4.475m RT.  
GRATE 154.880  
INV. 153.717
- 136 INLET TY.B, RESTRICTED DEPTH  
0.9m DIA., TY.3 F&G  
STA. 3+293.825, 11.400m RT.  
GRATE 155.100  
INV.(N) 153.932  
INV.(E) 153.780
- 151 INLET TY.A, TY.3 F&G  
STA. 3+152.000, 4.475m LT.  
GRATE 154.303  
INV. 153.041
- 147 MH. TY.A, RESTRICTED DEPTH  
1.8m DIA., TY.3 F&G  
STA. 3+204.448, 6.200m RT.  
SEE DETAIL FOR GRATE OFFSET  
GRATE 154.578  
INV.(E,N) 152.893
- 144 MH. TY.A, RESTRICTED DEPTH  
1.8m DIA., TY.1 FRAME, CL. LID  
STA. 3+230.000, 6.200m LT.  
SEE DETAIL FOR FRAME OFFSET  
TOP 154.897  
INV.(E,W) 153.185  
INV.(S) 153.489
- 138 MH. TY.A, RESTRICTED DEPTH  
1.8m DIA., TY.3 F&G  
STA. 3+291.348, 6.200m LT.  
SEE DETAIL FOR GRATE OFFSET  
GRATE 155.028  
INV.(E) 153.547  
INV.(W) 153.394  
INV.(S) 153.699
- 135 INLET TY.B, RESTRICTED DEPTH  
0.9m DIA., TY.3 F&G  
STA. 3+302.575, 11.400m RT.  
GRATE 155.100  
INV. 153.972
- 150 MH. TY.A, RESTRICTED DEPTH  
1.8m DIA., TY.1 FRAME, CL. LID  
STA. 3+173.000, 6.200m RT.  
SEE DETAIL FOR FRAME OFFSET  
TOP 154.660  
INV.(E,W) 152.731  
INV.(N) 153.341
- 146 MH. TY.A, RESTRICTED DEPTH  
1.8m DIA., TY.3 F&G  
STA. 3+204.448, 6.200m LT.  
SEE DETAIL FOR GRATE OFFSET  
GRATE 154.577  
INV.(E) 153.100  
INV.(S) 152.948
- 143 INLET TY.B, RESTRICTED DEPTH  
0.9m DIA., TY.3 F&G  
STA. 3+230.000, 4.475m LT.  
GRATE 154.708  
INV. 153.491
- 137 INLET TY.B, RESTRICTED DEPTH  
0.9m DIA., TY.3 F&G  
STA. 3+291.348, 6.200m RT.  
GRATE 155.031  
INV. 153.755
- 134 INLET TY.B, RESTRICTED DEPTH  
0.9m DIA., TY.3 F&G  
STA. 3+302.780, 9.900m RT.  
GRATE 155.068  
INV. 153.975
- 149 INLET TY.A, TY.3 F&G  
STA. 3+173.000, 4.475m RT.  
GRATE 154.412  
INV. 153.353
- 140 INLET TY.A, TY.3 F&G  
STA. 3+263.000, 4.475m LT.  
GRATE 154.880  
INV. 153.632
- 133 INLET TY.A, TY.11 F&G  
STA. 3+306.375, 10.000m RT.  
GRATE 155.348  
INV. 153.990
- 132 INLET TY.A, TY.3 F&G  
STA. 3+302.713, 10.200m LT.  
GRATE 155.069  
INV. 153.907



PLOT DATE = 2/15/2009  
 FILE NAME = H:\4420\Contract 74349\SH1\_075.as.dgn

Sheet: 4  
 Angle: 0.9785  
 Chain: P\_IL33

HMG JOB NO. 4420