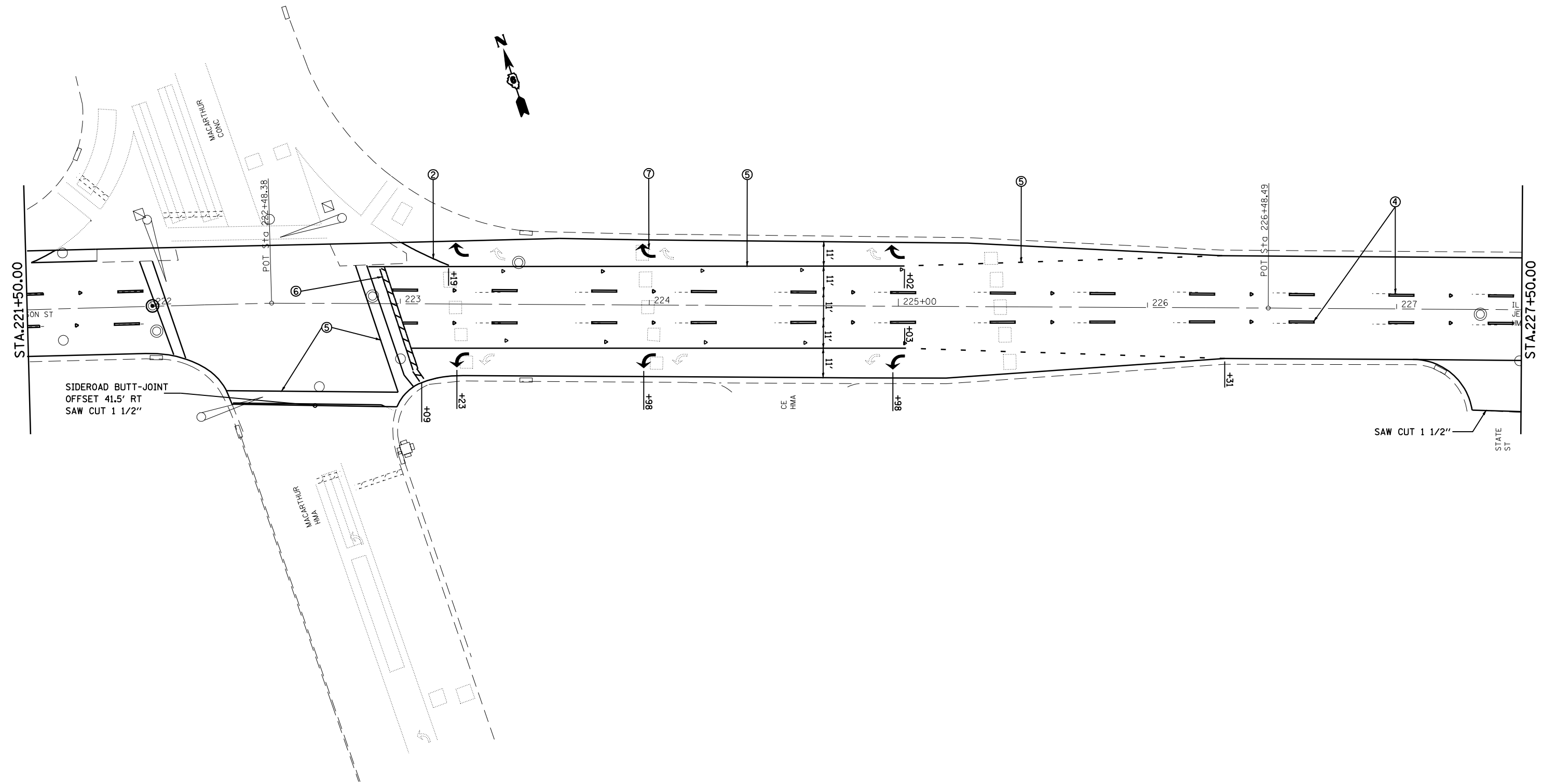


LEGEND

- ① THERMOPLASTIC PAVEMENT MARKING - LINE 5"
- ② THERMOPLASTIC PAVEMENT MARKING - LINE 8"
- ③ THERMOPLASTIC PAVEMENT MARKING - LINE 12"
- ④ PREFORMED PLASTIC PAVEMENT MARKING, TYPE B- LINE 5"
- ⑤ PREFORMED PLASTIC PAVEMENT MARKING, TYPE B- LINE 6"
- ⑥ PREFORMED PLASTIC PAVEMENT MARKING, TYPE B - LINE 24"
- ⑦ PREFORMED PLASTIC PAVEMENT MARKING, TYPE B - LETTERS & SYMBOLS



FILE NAME =	USER NAME = laughlinr1	DESIGNED -	REVISED -
S:\CADD\72C40 (D9601709)\D672C40\CADD\	CAD\sheets\D672C40-sht-plan.dgn	DRAWN -	REVISED -
	PLOT SCALE = 40.0000' / IN.	CHECKED -	REVISED -
	PLOT DATE = Jan-20-2009 11:16:35AM	DATE -	REVISED -

**STATE OF ILLINOIS
DEPARTMENT OF TRANSPORTATION**

PLAN			
SCALE:	SHEET NO.	OF SHEETS	STA. TO STA.

F.A.P. RTE.	SECTION	COUNTY	TOTAL SHEETS	SHEET NO.
67	(SIRS-5)(107Z)RS-8	Sangamon	41	25
CONTRACT NO. 72C40			ILLINOIS FED. AID PROJECT	