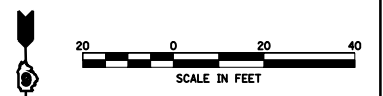
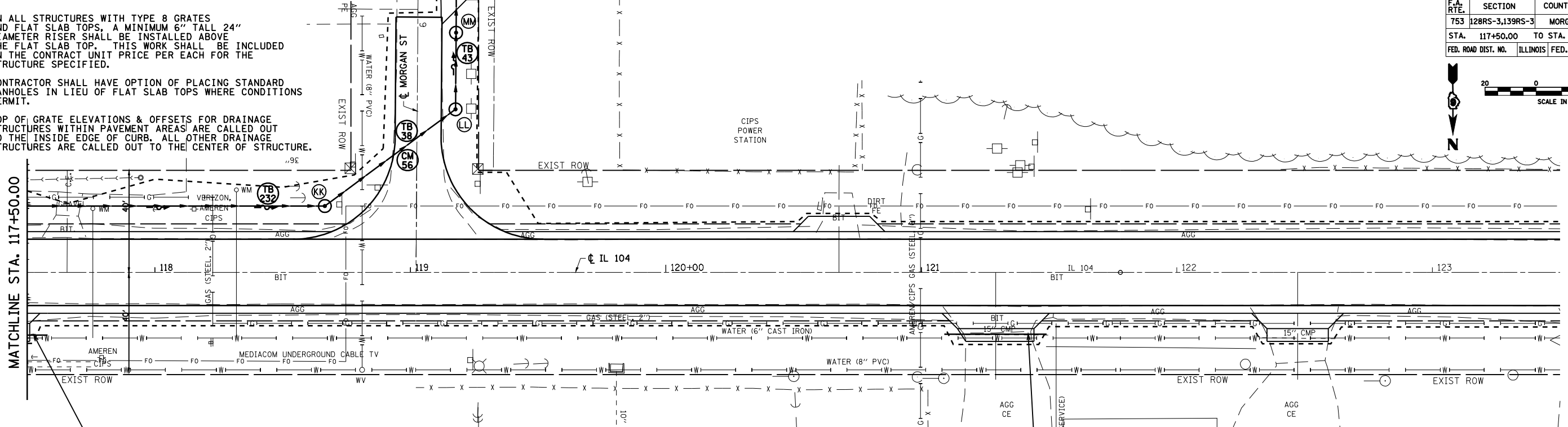


| F.A. RTE. | SECTION | COUNTY | TOTAL SHEETS | SHEET NO. |
|----------------------------------|-----------------|----------|------------------|-----------|
| 753 | 128RS-3,139RS-3 | MORGAN | 137 | 48 |
| STA. 117+50.00 TO STA. 123+50.00 | | | | |
| FED. ROAD DIST. NO. | | ILLINOIS | FED. AID PROJECT | |



- NOTE:
- ON ALL STRUCTURES WITH TYPE 8 GRATES AND FLAT SLAB TOPS, A MINIMUM 6" TALL 24" DIAMETER RISER SHALL BE INSTALLED ABOVE THE FLAT SLAB TOP. THIS WORK SHALL BE INCLUDED IN THE CONTRACT UNIT PRICE PER EACH FOR THE STRUCTURE SPECIFIED.
 - CONTRACTOR SHALL HAVE OPTION OF PLACING STANDARD MANHOLES IN LIEU OF FLAT SLAB TOPS WHERE CONDITIONS PERMIT.
 - TOP OF GRATE ELEVATIONS & OFFSETS FOR DRAINAGE STRUCTURES WITHIN PAVEMENT AREAS ARE CALLED OUT TO THE INSIDE EDGE OF CURB. ALL OTHER DRAINAGE STRUCTURES ARE CALLED OUT TO THE CENTER OF STRUCTURE.

| PLAN | DATE | BY |
|-----------|------|----|
| SURVEYED | | |
| PLOTTED | | |
| CHECKED | | |
| DATE | | |
| NOTE BOOK | | |
| NO. | | |



PROPOSED PIPE CULVERT,
TYPE 1, CS/A - 15" DIA.
USFL STA. 117+20.0, 24.7' RT.,
ELEV. = 664.80
DSFL STA. 117+58.0, 24.5' RT.,
ELEV. = 664.57
LENGTH = 38.0'; SLOPE = 0.61%
EXISTING 12" CULVERT TO BE REMOVED

EE STA 114+03.00, 15.0' LT
PR MH, T-A, 5' DIA. W/ FST & T-1 F & CL
(STD 602401, 602601, 602701, 604001)
TOG = 667.47

FF STA 114+03.00, 25.0' LT
PR INLET, T-A W/ T-8 G
(STD 602301, 604036)
TOG = 665.64

GG STA 115+20.00, 23.0' LT
PR MH, T-A, 5' DIA. W/ FST & T-8 G
(STD 602401, 602601, 602701, 604036)
TOG = 666.50

HH STA 116+85.00, 25.5' LT
PR MH, T-A, 5' DIA. W/ FST & T-8 G
(STD 602401, 602601, 602701, 604036)
TOG = 664.50

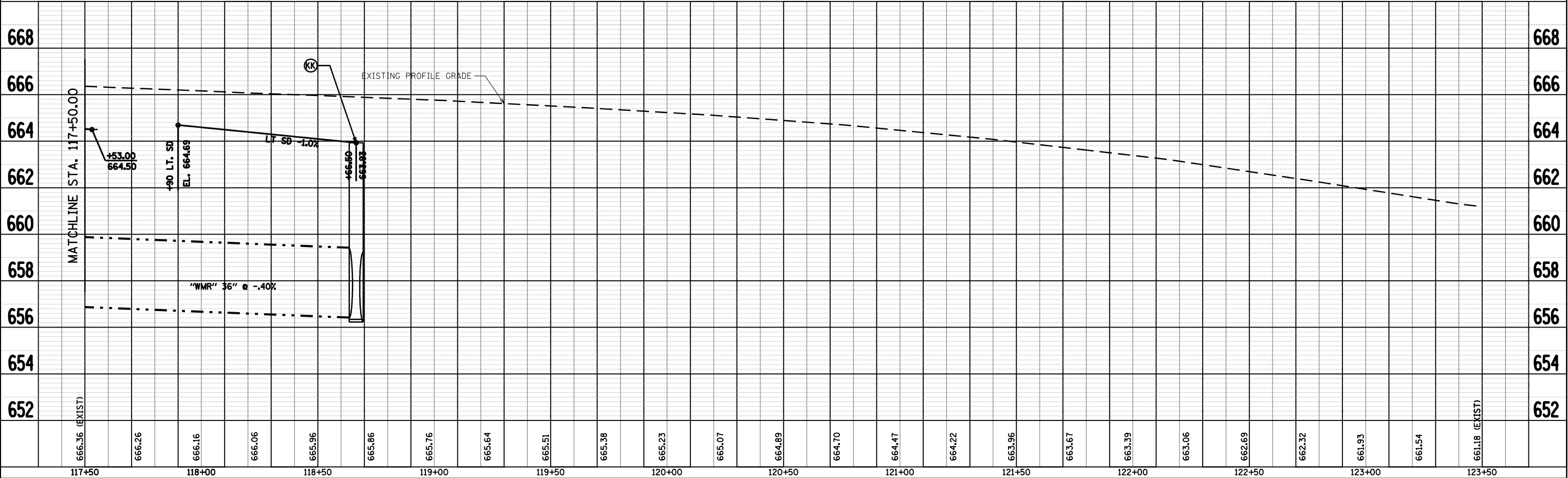
PROPOSED PIPE CULVERT -
TYPE 1, CS/A - 15" DIA.
USFL STA. 121+09.0, 24.2' RT.,
ELEV. = 662.70
DSFL STA. 121+49.0, 24.2' RT.,
ELEV. = 662.60
LENGTH = 40.0'; SLOPE = 0.24%
EXISTING 15" CULVERT TO BE REMOVED

II STA 111+67.87, 25.9' RT
PR INLET, T-A W/ T-8 G
(STD 602301, 604036)
TOG = 667.56
INV = MATCH EXISTING

KK STA 118+66.50, 26.0' LT
PR MH, T-A, 6' DIA. W/ FST & T-8 G
(STD 602406, 602601, 602701, 604036)
TOG = 663.93

SS STA 112+84.00, 22.0' LT
PR INLET, T-A W/ T-8 G
(STD 602301, 604036)
TOG = 667.20

| PROFILE | DATE | BY |
|-----------|------|----|
| SURVEYED | | |
| PLOTTED | | |
| CHECKED | | |
| DATE | | |
| NOTE BOOK | | |
| NO. | | |



DATE: Jan-16-2009 09:45:06 AM
 FILE NAME: S:\CAD\072923 07854784\Drawings\784\Consult\Drawings\784\784.dwg
 PLOT SCALE: 1/8" = 1'-0"
 USER NAME: jgaughlin-1

IL ROUTE 104 DRAINAGE PLAN & PROFILE, STA 117+50 TO STA 123+50