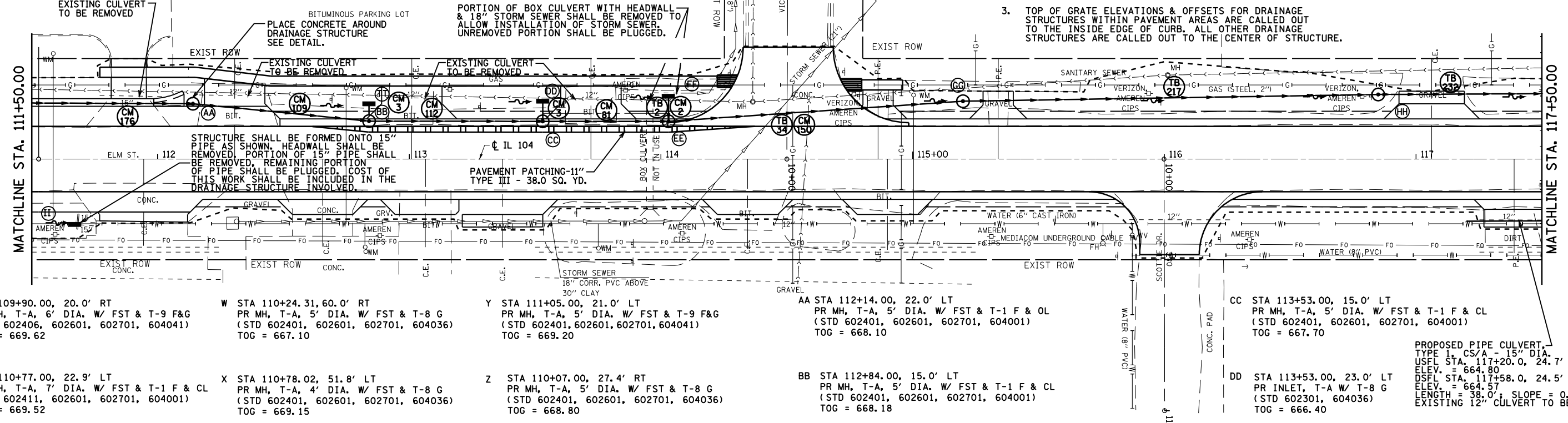


F.A. RTE.	SECTION	COUNTY	TOTAL SHEETS	SHEET NO.
753	I28RS-3,139RS-3	MORGAN	137	47
STA. 111+50.00 TO STA. 117+50.00				
FED. ROAD DIST. NO.		ILLINOIS	FED. AID PROJECT	

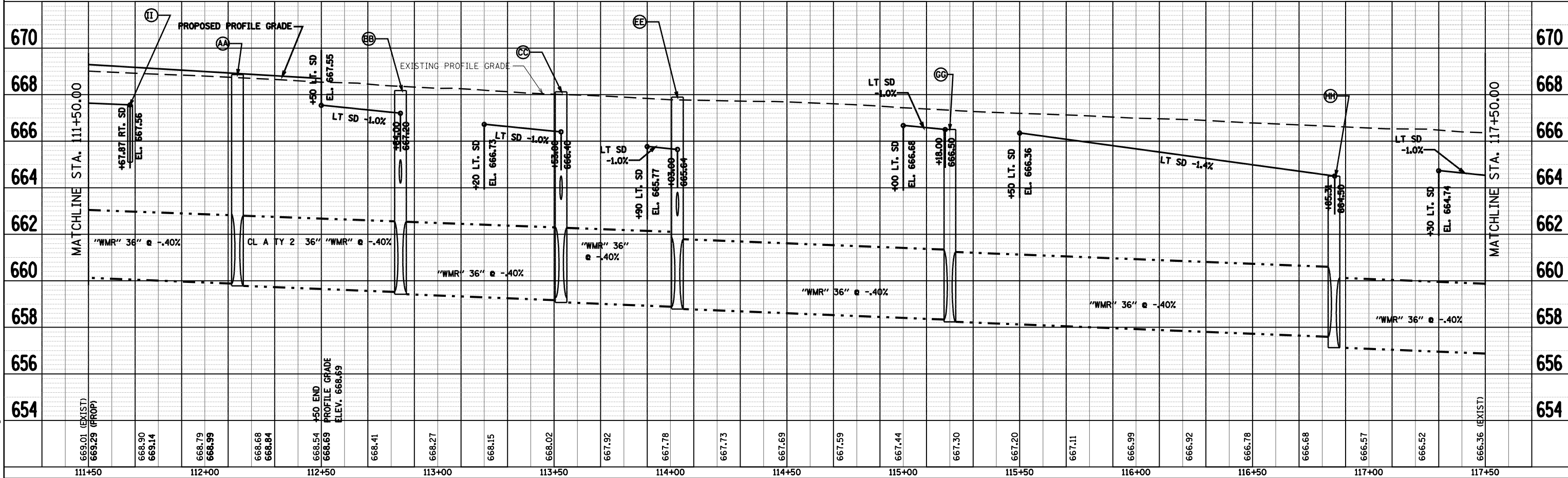
Y-AA PR SS 36" X 106.9' (WMR) USFL = 660.30 DSFL = 659.88	BB-CC PR SS 36" X 67.5' (WMR) USFL = 659.42 DSFL = 659.16	CC-EE PR SS 36" X 48.3' (WMR) USFL = 659.06 DSFL = 658.88	EE-GG PR SS 36" X 114.7' (WMR) USFL = 658.78 DSFL = 658.33	TT-BB PR SS 12" X 6.2' (WMR) USFL = 664.23 DSFL = 664.20
AA-BB PR SS 36" X 68.5' (WMR) USFL = 659.78 DSFL = 659.52	DD-CC PR SS 12" X 7.0' (WMR) USFL = 663.54 DSFL = 663.50	FF-EE PR SS 12" X 9.0' (WMR) USFL = 662.87 DSFL = 662.80	GG-HH PR SS 36" X 163.4' (WMR) USFL = 658.23 DSFL = 657.59	HH-KK PR SS 36" X 183.5' (WMR) USFL = 657.12 DSFL = 656.42

- NOTE:
- ON ALL STRUCTURES WITH TYPE 8 GRATES AND FLAT SLAB TOPS, A MINIMUM 6" TALL 24" DIAMETER RISER SHALL BE INSTALLED ABOVE THE FLAT SLAB TOP. THIS WORK SHALL BE INCLUDED IN THE CONTRACT UNIT PRICE PER EACH FOR THE STRUCTURE SPECIFIED.
 - CONTRACTOR SHALL HAVE OPTION OF PLACING STANDARD MANHOLES IN LIEU OF FLAT SLAB TOPS WHERE CONDITIONS PERMIT.
 - TOP OF GRATE ELEVATIONS & OFFSETS FOR DRAINAGE STRUCTURES WITHIN PAVEMENT AREAS ARE CALLED OUT TO THE INSIDE EDGE OF CURB. ALL OTHER DRAINAGE STRUCTURES ARE CALLED OUT TO THE CENTER OF STRUCTURE.



U STA 109+90.00, 20.0' RT PR MH, T-A, 6' DIA. W/ FST & T-9 F&G (STD 602406, 602601, 602701, 604041) TOG = 669.62	V STA 110+77.00, 22.9' LT PR MH, T-A, 7' DIA. W/ FST & T-1 F & CL (STD 602411, 602601, 602701, 604001) TOG = 669.52	W STA 110+24.31, 60.0' RT PR MH, T-A, 5' DIA. W/ FST & T-8 G (STD 602401, 602601, 602701, 604036) TOG = 667.10	X STA 110+78.02, 51.8' LT PR MH, T-A, 4' DIA. W/ FST & T-8 G (STD 602401, 602601, 602701, 604036) TOG = 669.15	Y STA 111+05.00, 21.0' LT PR MH, T-A, 5' DIA. W/ FST & T-9 F&G (STD 602401, 602601, 602701, 604041) TOG = 669.20	Z STA 110+07.00, 27.4' RT PR MH, T-A, 5' DIA. W/ FST & T-8 G (STD 602401, 602601, 602701, 604036) TOG = 668.80	AA STA 112+14.00, 22.0' LT PR MH, T-A, 5' DIA. W/ FST & T-1 F & CL (STD 602401, 602601, 602701, 604001) TOG = 668.10	BB STA 112+84.00, 15.0' LT PR MH, T-A, 5' DIA. W/ FST & T-1 F & CL (STD 602401, 602601, 602701, 604001) TOG = 668.18	CC STA 113+53.00, 15.0' LT PR MH, T-A, 5' DIA. W/ FST & T-1 F & CL (STD 602401, 602601, 602701, 604001) TOG = 667.70	DD STA 113+53.00, 23.0' LT PR INLET, T-A W/ T-8 G (STD 602301, 604036) TOG = 666.40
---	--	---	---	---	---	---	---	---	--

PROPOSED PIPE CULVERT,
TYPE 1 CS/A - 15" DIA.
USFL STA 117+20.0, 24.7' RT.,
ELEV. = 664.80
DSFL STA 117+58.0, 24.5' RT.,
ELEV. = 664.57
LENGTH = 38.0'; SLOPE = 0.61%
EXISTING 12" CULVERT TO BE REMOVED



IL ROUTE 104 DRAINAGE PLAN & PROFILE, STA 111+50 TO STA 117+50

PLAN	DATE
REVISION	
BY	
DATE	

PROFILE	DATE
REVISION	
BY	
DATE	

PLOT DATE = Jan-16-2009 09:46:59AM
FILE NAME = S:\CAD\07\2923 0\854784\Drawings\784\Consult\Drawings\784\784.dwg
PLOT SCALE = 42.3229 / IN.
USER NAME = jangh11r-1