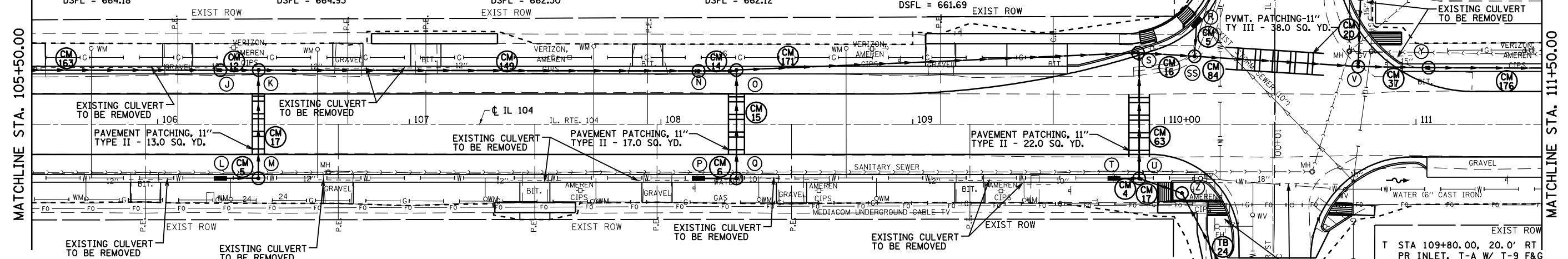


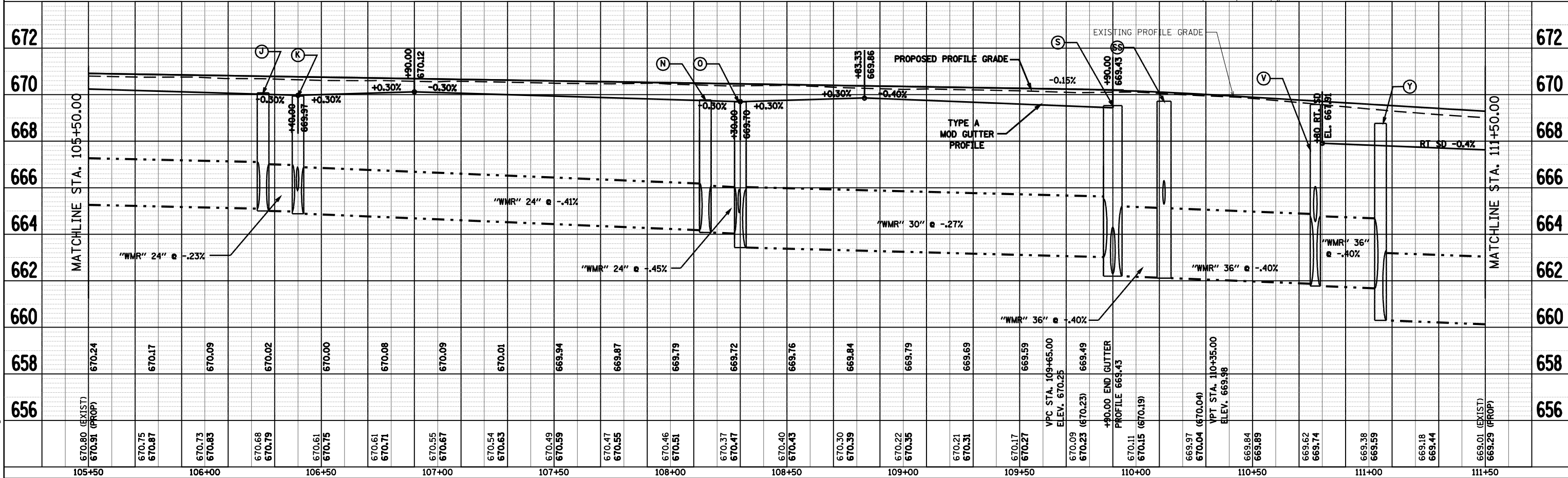
F.A. RTE.	SECTION	COUNTY	TOTAL SHEETS	SHEET NO.
753	128RS-3,139RS-3	MORGAN	137	46
STA. 105+50.00 TO STA. 111+50.00		FED. ROAD DIST. NO. ILLINOIS FED. AID PROJECT		



L-M PR SS 12" X 14.1' (WMR) USFL = 666.71 DSFL = 666.60	N-O PR SS 24" X 13.6' (WMR) USFL = 664.08 DSFL = 664.04	O-S PR SS 30" X 158.8' (WMR) USFL = 663.43 DSFL = 663.02	R-SS PR SS 12" X 11.7' (WMR) USFL = 665.42 DSFL = 665.30	SS-V PR SS 36" X 64.1' (WMR) USFL = 662.12 DSFL = 661.88	W-Z PR SS 24" X 34.7' (WMR) USFL = 663.70 DSFL = 663.38
M-K PR SS 12" X 40.9' (WMR) USFL = 666.50 DSFL = 665.88	P-Q PR SS 12" X 14.1' (WMR) USFL = 665.75 DSFL = 665.65	T-U PR SS 12" X 9.0' (WMR) USFL = 666.28 DSFL = 666.23	Z-U PR SS 24" X 16.3' (WMR) USFL = 663.28 DSFL = 663.15	X-V PR SS 18" X 26.6' (WMR) USFL = 664.80 DSFL = 664.55	
K-N PR SS 24" X 172.6' (WMR) USFL = 664.88 DSFL = 664.18	Q-O PR SS 12" X 40.9' (WMR) USFL = 665.55 DSFL = 664.93	U-S PR SS 30" X 47.6' (WMR) USFL = 663.04 DSFL = 662.30	S-SS PR SS 36" X 17.3' (WMR) USFL = 662.20 DSFL = 662.12	V-Y PR SS 36" X 25.3' (WMR) USFL = 661.78 DSFL = 661.69	



- NOTE:
 1. ON ALL STRUCTURES WITH TYPE 8 GRATES AND FLAT SLAB TOPS, A MINIMUM 6" TALL 24" DIAMETER RISER SHALL BE INSTALLED ABOVE THE FLAT SLAB TOP. THIS WORK SHALL BE INCLUDED IN THE CONTRACT UNIT PRICE PER EACH FOR THE STRUCTURE SPECIFIED.
 2. CONTRACTOR SHALL HAVE OPTION OF PLACING STANDARD MANHOLES IN LIEU OF FLAT SLAB TOPS WHERE CONDITIONS PERMIT.
 3. TOP OF GRATE ELEVATIONS & OFFSETS FOR DRAINAGE STRUCTURES WITHIN PAVEMENT AREAS ARE CALLED OUT TO THE INSIDE EDGE OF CURB. ALL OTHER DRAINAGE STRUCTURES ARE CALLED OUT TO THE CENTER OF STRUCTURE.
- K STA 106+40.00, 20.0' LT PR MH, T-A, 5' DIA. W/ FST & T-9 F&G (STD 602401, 602601, 602701, 604041) TOG = 670.14
 - L STA 106+25.00, 20.0' RT PR INLET, T-A W/ T-9 F&G (STD 602301, 604041) TOG = 670.18
 - M STA 106+40.00, 20.0' RT PR INLET, T-B W/ FST & T-9 F&G (STD 602306, 602601, 604041) TOG = 670.14
 - N STA 108+15.00 20.0' LT PR MH, T-A, 5' DIA. W/ FST & T-9 F&G (STD 602401, 602601, 602701, 604041) TOG = 669.91
 - O STA 108+30.00, 20.0' LT PR MH, T-A, 5' DIA. W/ FST & T-9 F&G (STD 602401, 602601, 602701, 604041) TOG = 669.87
 - P STA 108+15.00 20.0' RT PR INLET, T-A W/ T-9 F&G (STD 602301, 604041) TOG = 669.91
 - Q STA 108+30.00, 20.0' RT PR INLET, T-B W/ FST & T-9 F&G (STD 602306, 602601, 604041) TOG = 669.87
 - R STA 110+13.43 39.8' LT PR INLET, T-A W/ T-3V F&G (STD 602301, 604011) TOG = 669.45
 - S STA 109+90.00, 27.5' LT PR MH, T-A, 8' DIA. W/ FST & T-3V F&G (STD 602416, 602601, 602701, 604011) TOG = 669.56
 - SS STA 110+12.00, 27.0' LT PR MH, T-A, 6' DIA. W/ FST & T-1 F&G (STD 602406, 602601, 602701, 604001) TOG = 669.72
 - T STA 109+80.00, 20.0' RT PR INLET, T-A W/ T-9 F&G (STD 602301, 604041) TOG = 669.67



IL ROUTE 104 DRAINAGE PLAN & PROFILE, STA 105+50 TO STA 111+50

PLAN	SURVEYED	BY	DATE
NOTE BOOK	PLOTTED		
NO.	CHECKED		
	DATE		
	BY		

PROFILE	SURVEYED	BY	DATE
NOTE BOOK	PLOTTED		
NO.	CHECKED		
	DATE		
	BY		

PLOT DATE = Jan-16-2009 09:46:52AM
 FILE NAME = S:\CAD\07\2923 07854784\DS4784\Consult\DrawData\Drawings\IL104.dwg
 PLOT SCALE = 42.3829 / IN.
 USER NAME = jangh11r-1