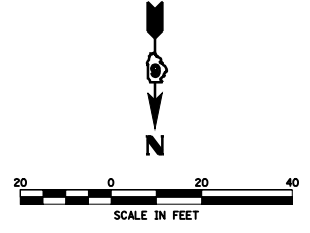


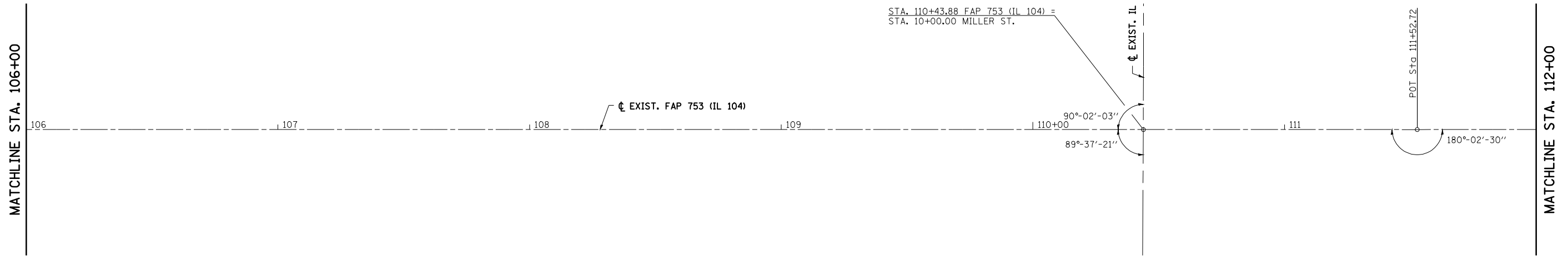
F.A.P. RTE.	SECTION	COUNTY	TOTAL SHEETS	SHEET NO.
753	*	MORGAN	137	29

STA. 106+00.00	TO STA. 117+00.00
FED. ROAD DIST. NO.	ILLINOIS FED. AID PROJECT

• 128RS-3; 139RS-3
D-96-547-04

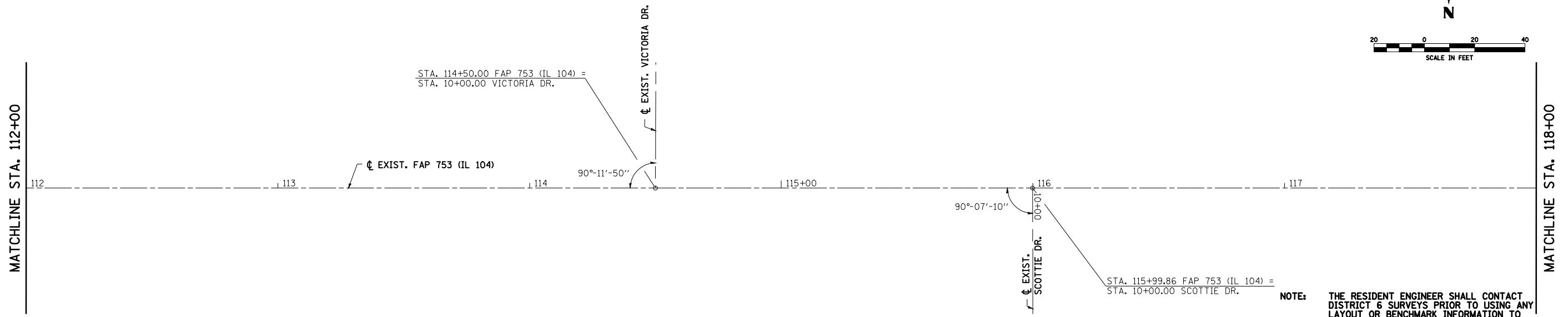


SEC 11, T13N, R8W, 3RD PM



BM #2: STA 110+21±, 40.5'± RT
CHISELED "6" ON SE CAP BOLT FIRE HYDRANT
NE CORNER IL RTE 104 & IL RTE 111
ELEV. 670.64

SEC 11, T13N, R8W, 3RD PM



NOTE: THE RESIDENT ENGINEER SHALL CONTACT DISTRICT 6 SURVEYS PRIOR TO USING ANY LAYOUT OR BENCHMARK INFORMATION TO VERIFY ITS ACCURACY.

BM #1: STA 115+75±, 33'± RT
CHISELED "6" ON SE CAP BOLT FIRE HYDRANT
NE CORNER ENTRANCE TO OLD HIGH SCHOOL
(NOW MIDDLE SCHOOL), ±500' WEST OF IL RTE 111
ELEV. 669.78

REVISIONS	
NAME	DATE

ILLINOIS DEPARTMENT OF TRANSPORTATION

FAP 753 (IL 104)
ALIGNMENT LAYOUT
STA 106+00.00 TO STA 118+00.00

DRAWN BY TMJ
CHECKED BY WHA
DATE NOVEMBER 2, 2007

PLOT DATE = Jan-16-2009 09:47:52AM
FILE NAME = S:\CADD\72923 (D\854784)\Consultant\Drawings\Hutchinson_Final\2447-16.dwg
PLOT SCALE = 42.3529 / IN.
USER NAME = laughlin-1