

F.A.P. RTE.	SECTION	COUNTY	TOTAL SHEETS	SHEET NO.
753	*	MORGAN	137	27

STA. 82+00.00 TO STA. 94+00.00  
 FED. ROAD DIST. NO. ILLINOIS FED. AID PROJECT

• 128RS-3; 139RS-3  
 D-96-547-04

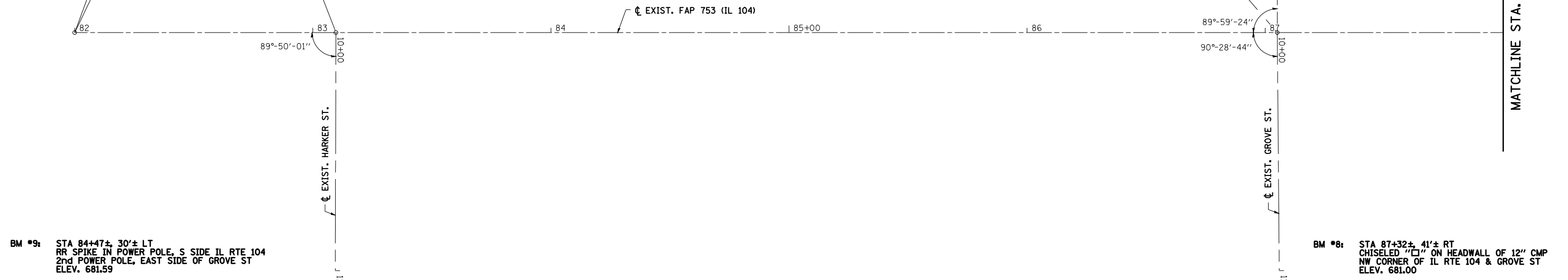


SEC 11, T13N, R8W, 3RD PM

STA. EQUATION FAP 753 (IL 104)  
 POT STA. 82+80.00 (BK)=  
 POT STA. 82+00.00 (AH)

STA. 83+09.72 FAP 753 (IL 104) =  
 STA. 10+00.00 HARKER ST.

STA. 87+05.07 FAP 753 (IL 104) =  
 STA. 10+00.00 GROVE ST.



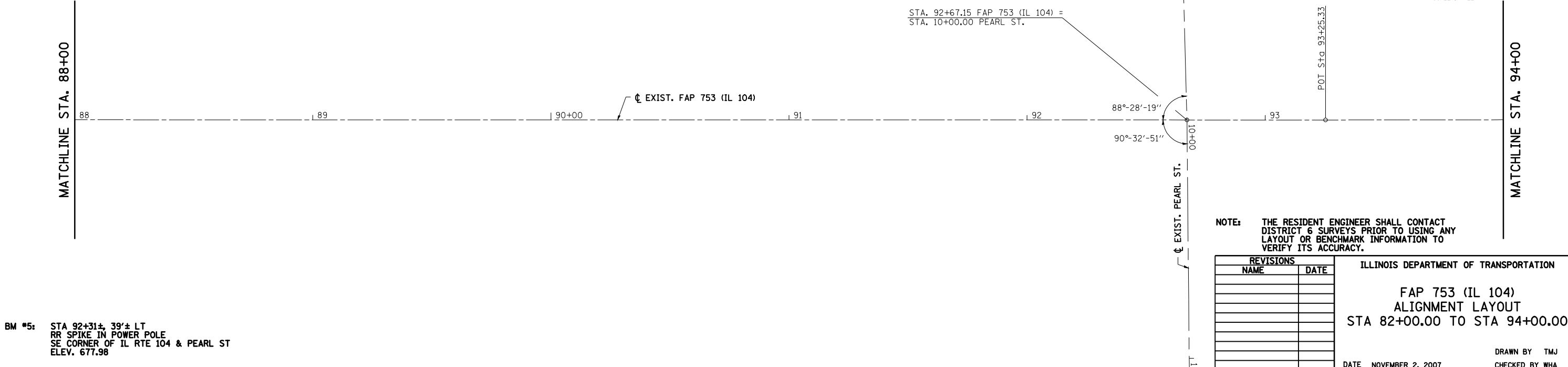
BM #9: STA 84+47±, 30'± LT  
 RR SPIKE IN POWER POLE, S SIDE IL RTE 104  
 2nd POWER POLE, EAST SIDE OF GROVE ST  
 ELEV. 681.59

BM #8: STA 87+32±, 41'± RT  
 CHISELED "□" ON HEADWALL OF 12" CMP  
 NW CORNER OF IL RTE 104 & GROVE ST  
 ELEV. 681.00

MATCHLINE STA. 88+00

SEC 11, T13N, R8W, 3RD PM

STA. 92+67.15 FAP 753 (IL 104) =  
 STA. 10+00.00 PEARL ST.



BM #5: STA 92+31±, 39'± LT  
 RR SPIKE IN POWER POLE  
 SE CORNER OF IL RTE 104 & PEARL ST  
 ELEV. 677.98

NOTE: THE RESIDENT ENGINEER SHALL CONTACT DISTRICT 6 SURVEYS PRIOR TO USING ANY LAYOUT OR BENCHMARK INFORMATION TO VERIFY ITS ACCURACY.

REVISIONS	
NAME	DATE

ILLINOIS DEPARTMENT OF TRANSPORTATION

FAP 753 (IL 104)  
 ALIGNMENT LAYOUT  
 STA 82+00.00 TO STA 94+00.00

DATE NOVEMBER 2, 2007  
 DRAWN BY TMJ  
 CHECKED BY WHA

PLOT DATE = Jan-16-2009 09:47:43AM  
 FILE NAME = S:\ACAD\72923 (D\854784)\Consultant\Drawings\Hutchinson\_Final\2447-16d883.dgn  
 PLOT SCALE = 42.3529' / IN.  
 USER NAME = laughlin-1