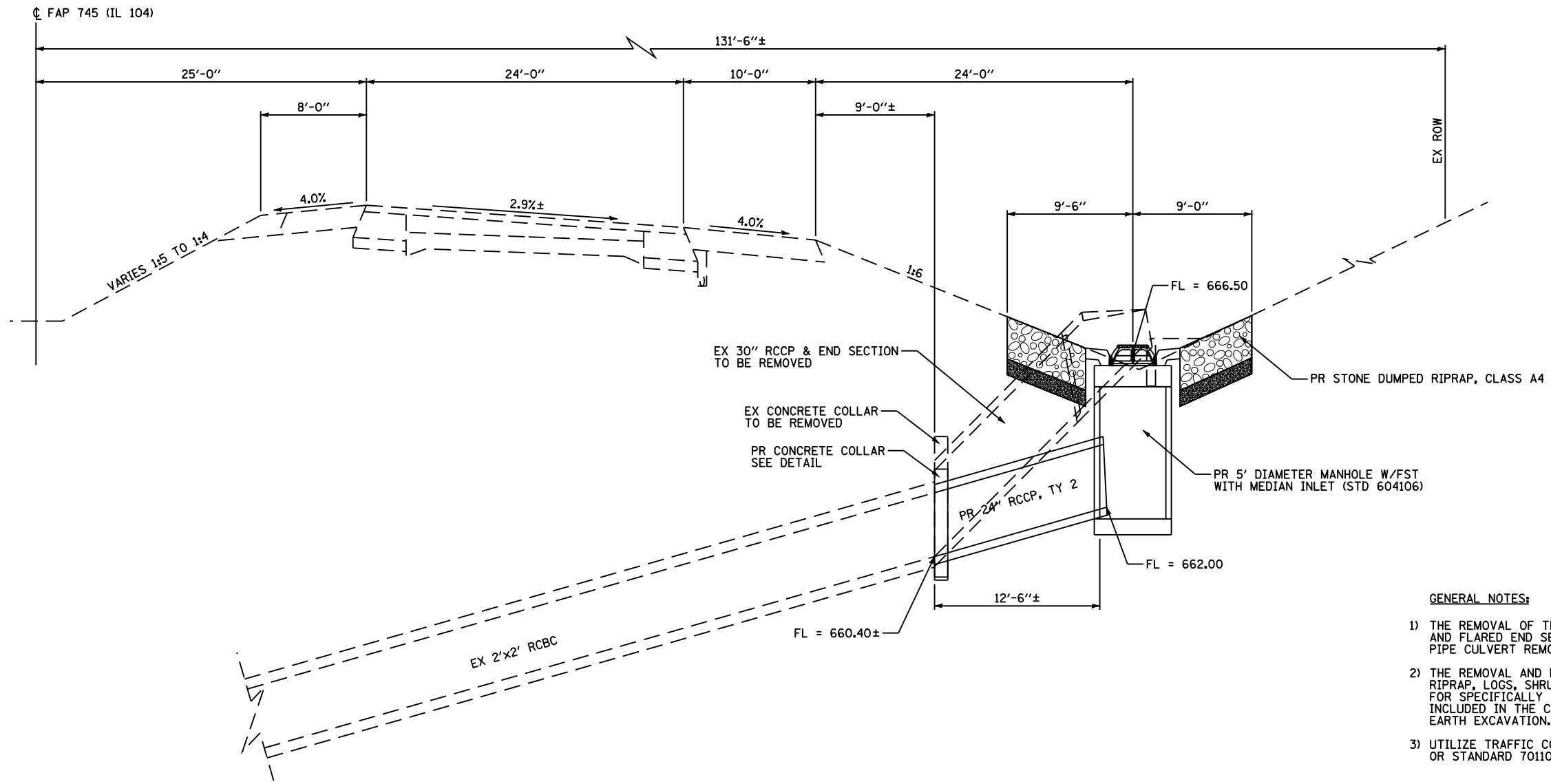
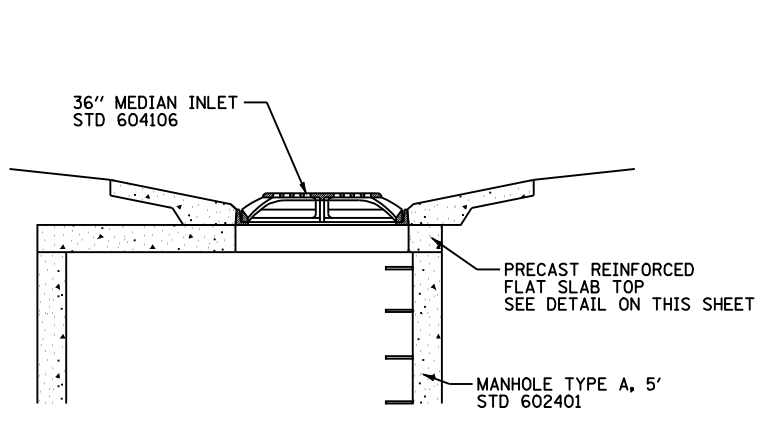


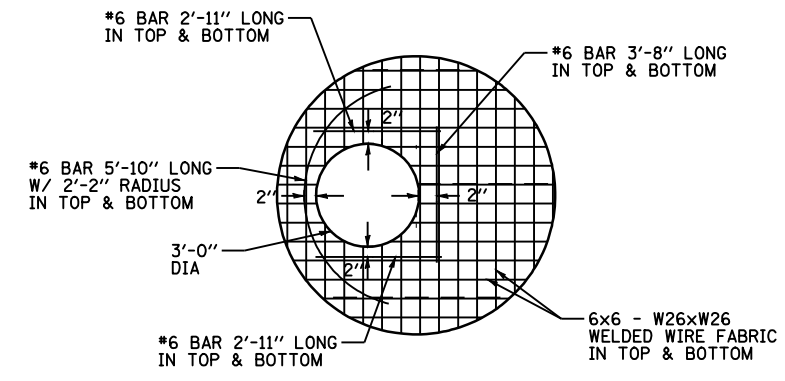
CULVERT STATION 306+34



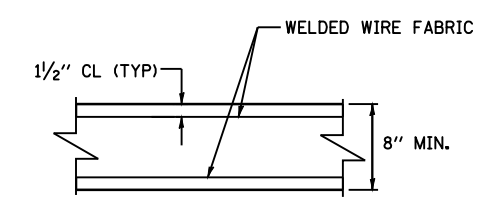
- GENERAL NOTES:**
- 1) THE REMOVAL OF THE EXISTING 30" RCCP, CONCRETE COLLAR, AND FLARED END SECTION SHALL BE PAID FOR PER FOOT FOR PIPE CULVERT REMOVAL (SPECIAL).
 - 2) THE REMOVAL AND DISPOSAL OF ALL OBSTRUCTIONS SUCH AS RIPRAP, LOGS, SHRUBS, BUSHES, SAPLINGS, ETC. NOT PAID FOR SPECIFICALLY IN THE PLANS SHALL BE CONSIDERED AS INCLUDED IN THE CONTRACT UNIT PRICE PER CUBIC YARD FOR EARTH EXCAVATION.
 - 3) UTILIZE TRAFFIC CONTROL AND PROTECTION STANDARD 701101 OR STANDARD 701106 AS APPLICABLE.



DETAIL OF STANDARD 36" MEDIAN INLET OF FLAT SLAB TOP



5' FLAT SLAB TOP DETAIL WITH 36" OPENING



TYPICAL SLAB TOP SECTION FOR 5' MANHOLES

FILE NAME =	USER NAME = laughlinr1	DESIGNED -	REVISED -	STATE OF ILLINOIS DEPARTMENT OF TRANSPORTATION	CULVERT DETAILS STATION 306+34			F.A.P. RTE.	SECTION	COUNTY	TOTAL SHEETS	SHEET NO.
et:\pwork\pwork\LAUGHLINRL\dms23418\details.dgn		DRAWN -	REVISED -		745	103(RS-12), 104(RS-5)	ADAMS	109	84			
PLOT SCALE = 100.0002' / IN.		CHECKED -	REVISED -		CONTRACT NO. 72877							
PLOT DATE = Jan-23-2009 11:54:16AM		DATE -	REVISED -		FED. ROAD DIST. NO. ILLINOIS FED. AID PROJECT							
				SCALE: 1"=50'	SHEET NO. 1	OF 1	SHEETS	STA.	TO STA.			