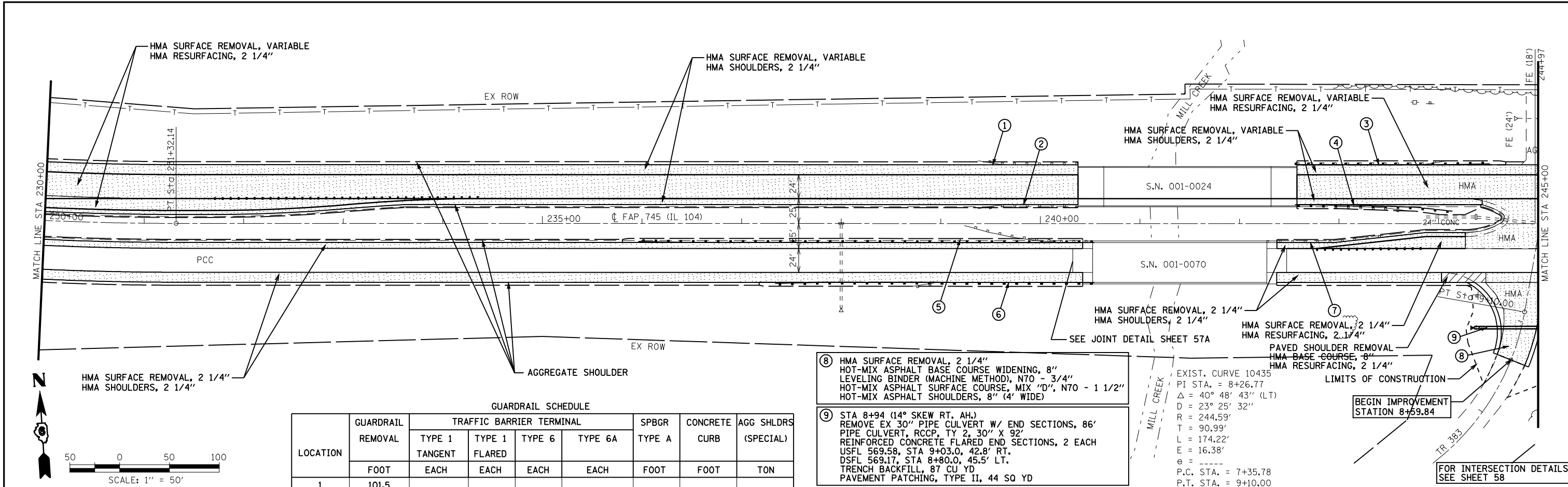


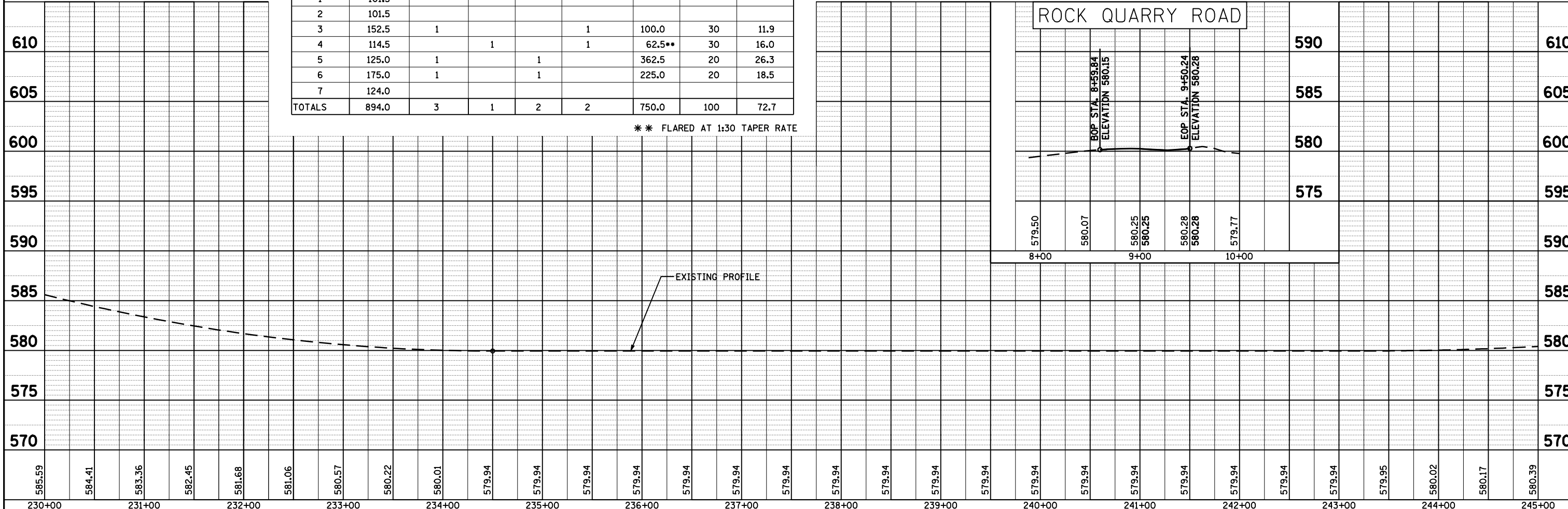
PLAN	SURVEYED	BY	DATE
	PLOTTED		
	CHECKED		
	DATE		
	NO.		
	FILE NAME		

PROFILE	SURVEYED	BY	DATE
	PLOTTED		
	CHECKED		
	DATE		
	NO.		
	FILE NAME		



LOCATION	GUARDRAIL REMOVAL FOOT	TRAFFIC BARRIER TERMINAL				SPBGR TYPE A FOOT	CONCRETE CURB FOOT	AGG SHLDRS (SPECIAL) TON
		TYPE 1 TANGENT EACH	TYPE 1 FLARED EACH	TYPE 6 EACH	TYPE 6A EACH			
1	101.5							
2	101.5							
3	152.5	1			1	100.0	30	11.9
4	114.5		1		1	62.5**	30	16.0
5	125.0	1		1		362.5	20	26.3
6	175.0	1		1		225.0	20	18.5
7	124.0							
TOTALS	894.0	3	1	2	2	750.0	100	72.7

\*\* FLARED AT 1:30 TAPER RATE



FILE NAME =	USER NAME = laughlinr1	DESIGNED -	REVISOR -	<b>STATE OF ILLINOIS</b> <b>DEPARTMENT OF TRANSPORTATION</b>	<b>FAP RTE 745 (IL 104)</b> <b>PLAN &amp; PROFILE SHEET</b>	F.A.P. RTE.	SECTION	COUNTY	TOTAL SHEETS	SHEET NO.
es:\pwork\PWIDOT\LAUGHLINR1\dms23418\07100_PP_08.dgn		CHECKED -	REVISOR -			745	103(RS-12), 104(RS-5)	ADAMS	109	35
PLOT SCALE = 100.0000' / IN.		DRAWN -	REVISOR -			CONTRACT NO. 72877				
PLOT DATE = Jan-23-2009 11:48:39AM		CHECKED -	REVISOR -			FED. ROAD DIST. NO. ILLINOIS FED. AID PROJECT				

SCALE: 1"=50' SHEET NO. 8 OF 30 SHEETS STA. 230+00 TO STA. 245+00