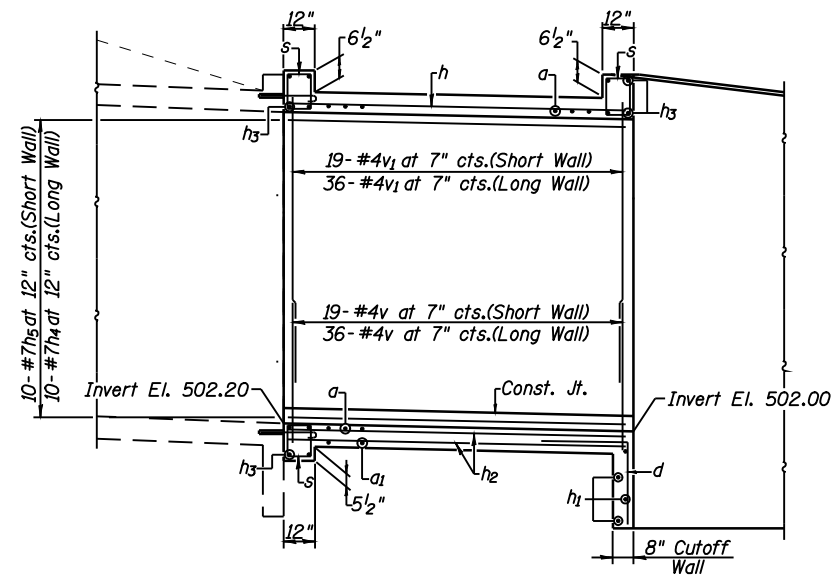
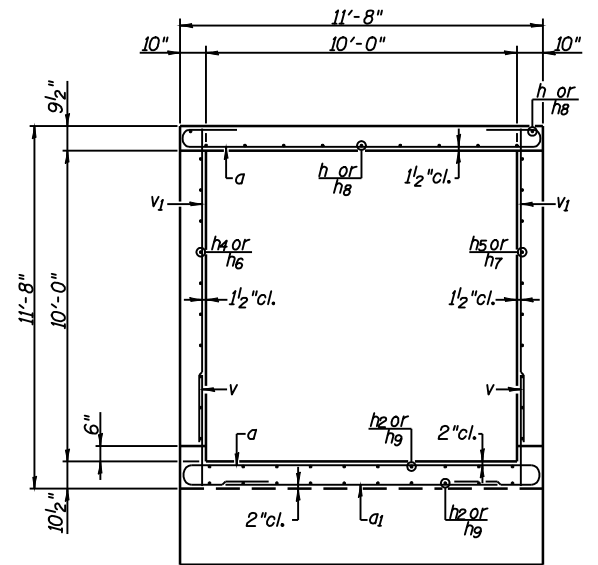


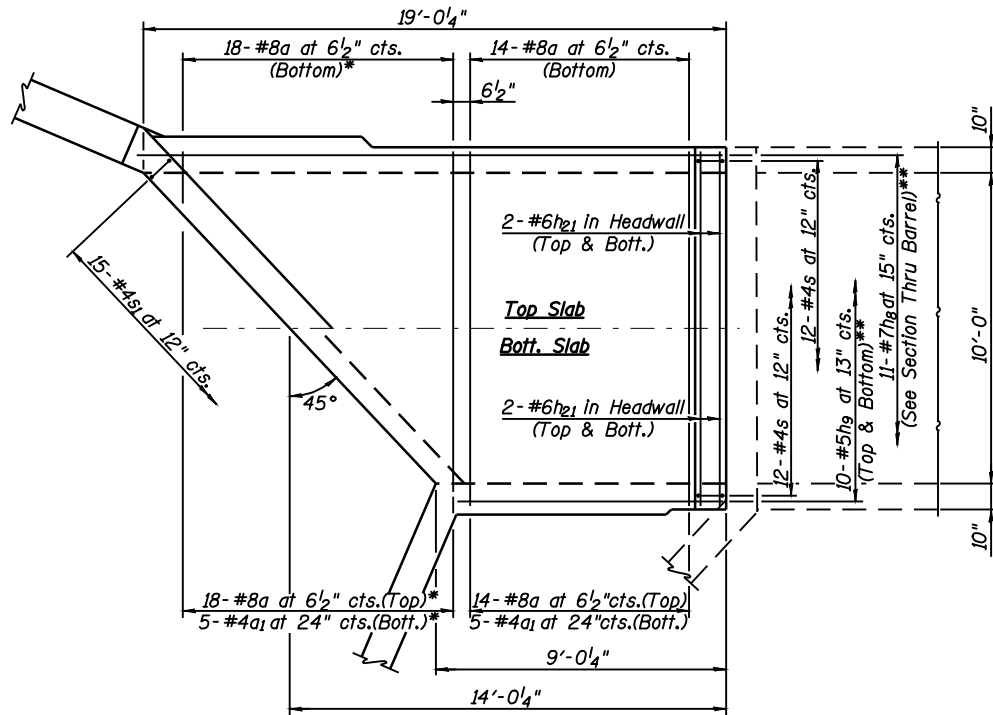
ELEVATION



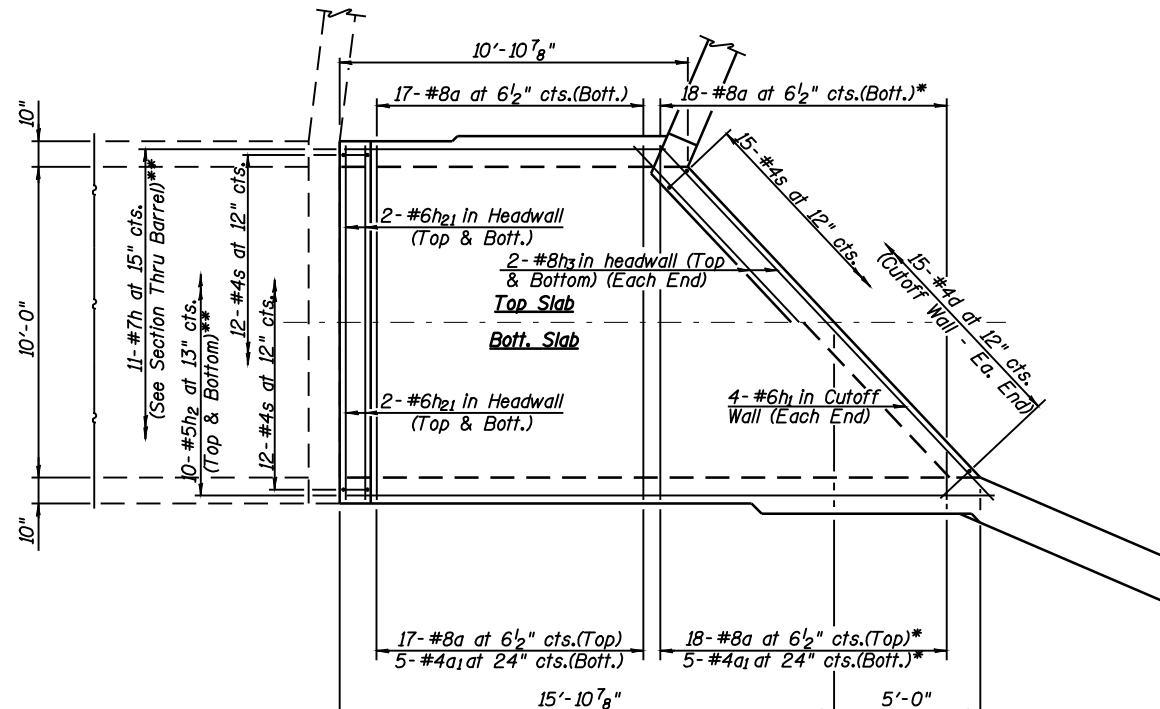
ELEVATION



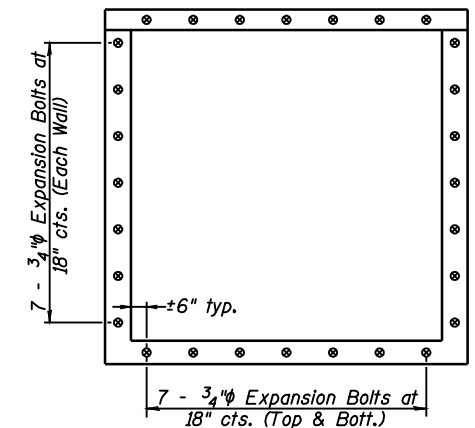
SECTION THRU BARREL
(Looking Upstream)



PLAN



PLAN



CROSS SECTION THRU CULVERT

Note: Expansion bolts shall be 3/4" ϕ hooked bolts. Hooked bolts shall extend a minimum of 9" into new concrete.

* a and a₁ bars in skew portion of slab shall be ordered full length and cut to fit. Balance of bar shall be used in opposite end of culvert.
** Cut in field as required.

CULVERT DETAILS
IL. ROUTE 125 OVER
TRIBUTARY TO LOST CREEK
F.A.P. ROUTE 67 - SECTION (6X-1)B-2
CASS COUNTY
STA. 76+61.00
S.N. 009-7000



Allen Henderson & Associates, Inc.
Civil and Structural Engineers Springfield, IL.
62703 Phone: (217)544-8033 IL. Design Firm
No. 184-001907

SHEET NO. 2
OF 5 SHEETS

F.A.P. RTE.	SECTION	COUNTY	TOTAL SHEETS	SHEET NO.
67	(6X-1)B-2	CASS	71	31
CONTRACT NO. 72875				
FED. ROAD DIST. NO. _ ILLINOIS FED. AID PROJECT				