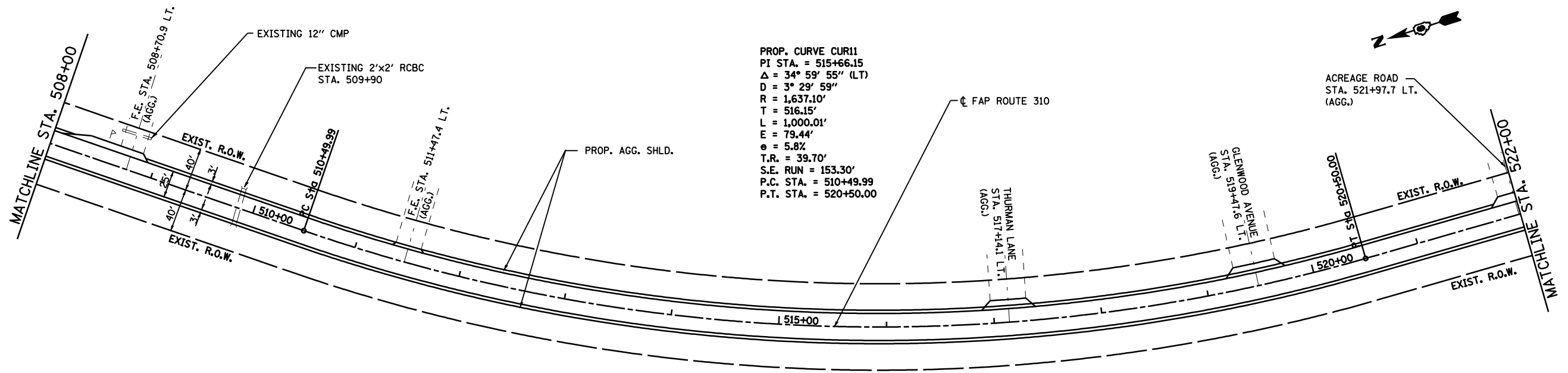
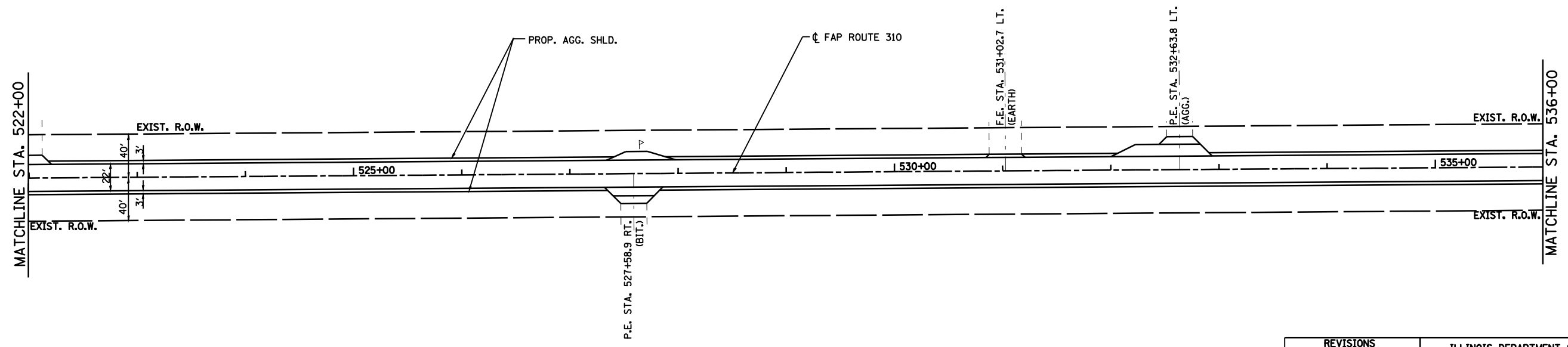


|                        |                |                  |              |           |
|------------------------|----------------|------------------|--------------|-----------|
| F.A.P. RTE.            | SECTION        | COUNTY           | TOTAL SHEETS | SHEET NO. |
| 310                    | •              | CASS             | 33           | 27        |
| STA. 508+00            | TO STA. 536+00 |                  |              |           |
| FED. ROAD DIST. NO.    | ILLINOIS       | FED. AID PROJECT |              |           |
| • 114(RS-3); 115(RS-3) |                |                  | 72830        |           |



PROP. CURVE CUR11  
 PI STA. = 515+66.15  
 $\Delta = 34^\circ 59' 55''$  (LT)  
 $D = 3^\circ 29' 59''$   
 $R = 1,637.10'$   
 $T = 516.15'$   
 $L = 1,000.01'$   
 $E = 79.44'$   
 $e = 5.8\%$   
 $T.R. = 39.70'$   
 $S.E. RUN = 153.30'$   
 $P.C. STA. = 510+49.99$   
 $P.T. STA. = 520+50.00$



25' 0 25' 50'  
 SCALE: 1" = 50'

| REVISIONS |      |
|-----------|------|
| NAME      | DATE |
|           |      |
|           |      |
|           |      |
|           |      |
|           |      |
|           |      |
|           |      |
|           |      |
|           |      |
|           |      |

ILLINOIS DEPARTMENT OF TRANSPORTATION  
**PLAN**  
 FAP ROUTE 310 (US 67)  
 SECTION 114 (RS-3); 115 (RS-3)  
 CASS COUNTY  
 SCALE: 1"=50'  
 DATE: 11/2003  
 DRAWN BY: FCX  
 CHECKED BY: FML