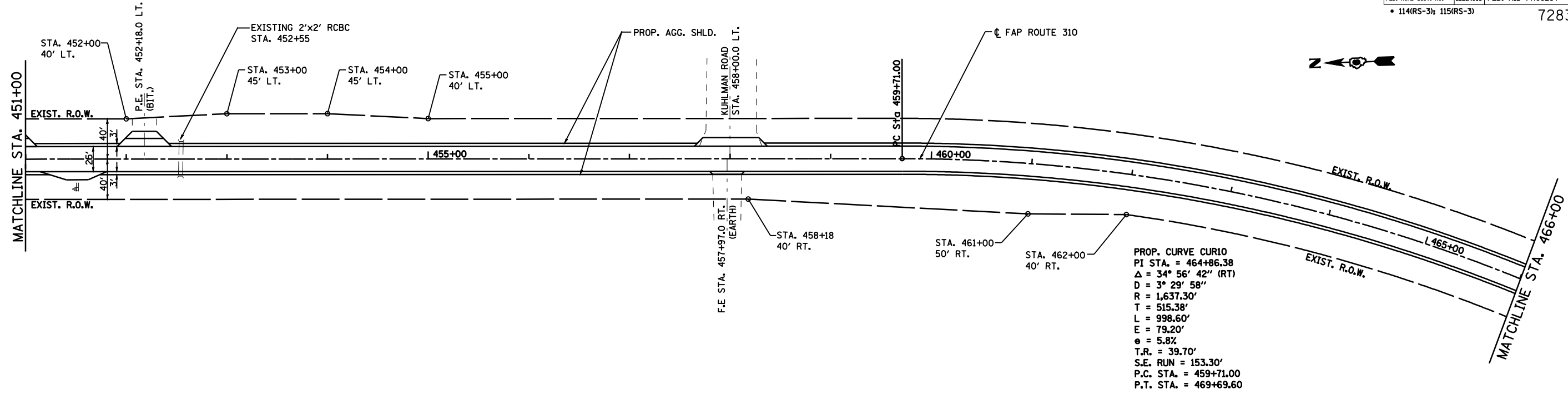
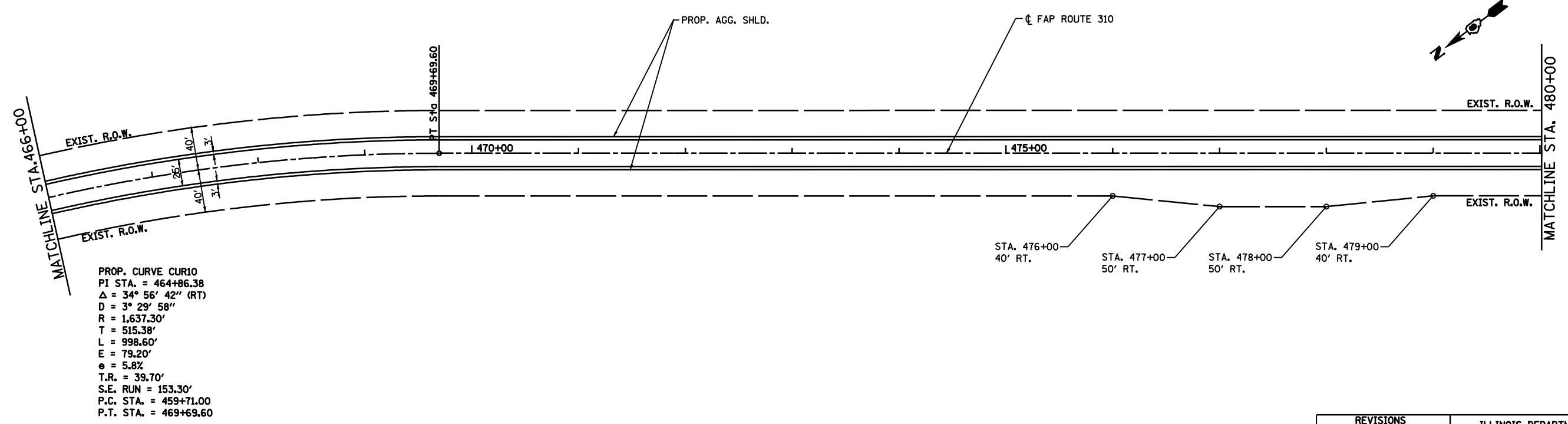


F.A.P. RTE.	SECTION	COUNTY	TOTAL SHEETS	SHEET NO.
310	•	CASS	33	25
STA. 451+00	TO STA. 480+00			
FED. ROAD DIST. NO.	ILLINOIS	FED. AID PROJECT		
• 114(RS-3); 115(RS-3)			72830	



PROP. CURVE CUR10  
 PI STA. = 464+86.38  
 $\Delta = 34^\circ 56' 42''$  (RT)  
 $D = 3^\circ 29' 58''$   
 $R = 1,637.30'$   
 $T = 515.38'$   
 $L = 998.60'$   
 $E = 79.20'$   
 $e = 5.8\%$   
 $T.R. = 39.70'$   
 $S.E. RUN = 153.30'$   
 $P.C. STA. = 459+71.00$   
 $P.T. STA. = 469+69.60$



PROP. CURVE CUR10  
 PI STA. = 464+86.38  
 $\Delta = 34^\circ 56' 42''$  (RT)  
 $D = 3^\circ 29' 58''$   
 $R = 1,637.30'$   
 $T = 515.38'$   
 $L = 998.60'$   
 $E = 79.20'$   
 $e = 5.8\%$   
 $T.R. = 39.70'$   
 $S.E. RUN = 153.30'$   
 $P.C. STA. = 459+71.00$   
 $P.T. STA. = 469+69.60$



25' 0 25' 50'  
 SCALE: 1" = 50'

REVISIONS	
NAME	DATE

ILLINOIS DEPARTMENT OF TRANSPORTATION  
**PLAN**  
 FAP ROUTE 310 (US 67)  
 SECTION 114 (RS-3); 115 (RS-3)  
 CASS COUNTY  
 SCALE: 1"=50'  
 DATE: 11/2003  
 DRAWN BY: FCX  
 CHECKED BY: FML