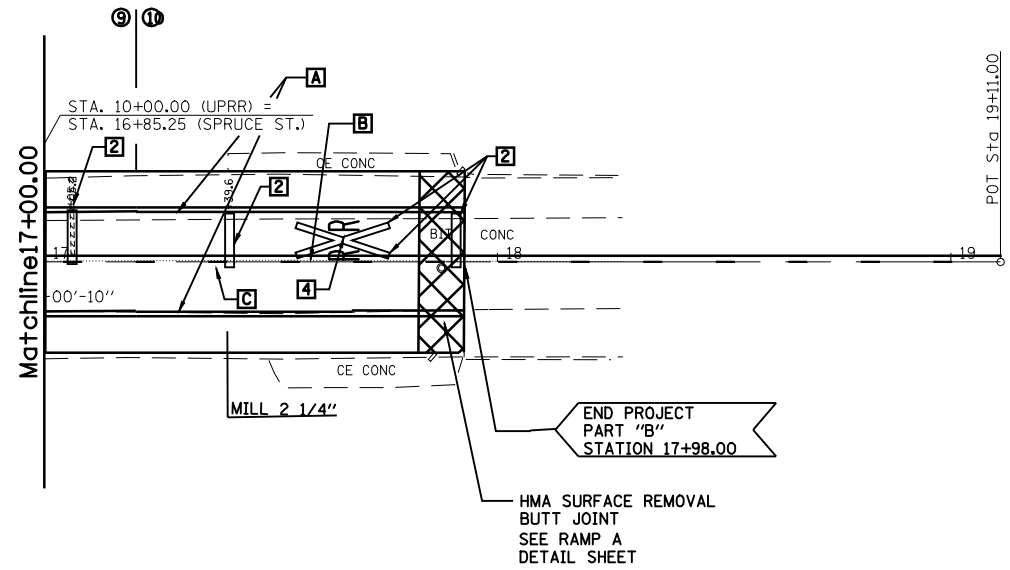
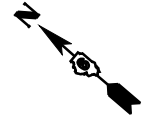


F.A.S. RTE.	SECTION	COUNTY	TOTAL SHEETS	SHEET NO.
723	*	MONTGOMERY	28	25
STA. 17+00.00		TO STA.		
FED. ROAD DIST. NO.		ILLINOIS	FED. AID PROJECT	
* 18(RS-4); 19(RS-7); 20Z(RS-5)				



THERMOPLASTIC PAVEMENT MARKING LEGEND

- A** 5" SOLID (WHITE)
- B** 5" SKIP-DASH (YELLOW)
- C** 5" SOLID (YELLOW)
- D** 5" DOUBLE YELLOW (WIDE)
- 13"** ITEM **D** 5" DOUBLE YELLOW (WIDE)

PREFORMED PLASTIC PAVEMENT MARKING, TYP. B LEGEND

- 1** 6" SOLID (WHITE)
- 2** 24" STOP BAR (WHITE)
- 3** 6" CROSSWALKS (WHITE)
- 4** LETTERS & SYMBOLS
- 5** 12" DIAGONAL (WHITE)

REVISIONS	
NAME	DATE

ILLINOIS DEPARTMENT OF TRANSPORTATION

FAS ROUTE 723
PLAN SHEET 4 OF 4
(PART "B")

SCALE: VERT.
HORIZ.
DATE

DRAWN BY
CHECKED BY