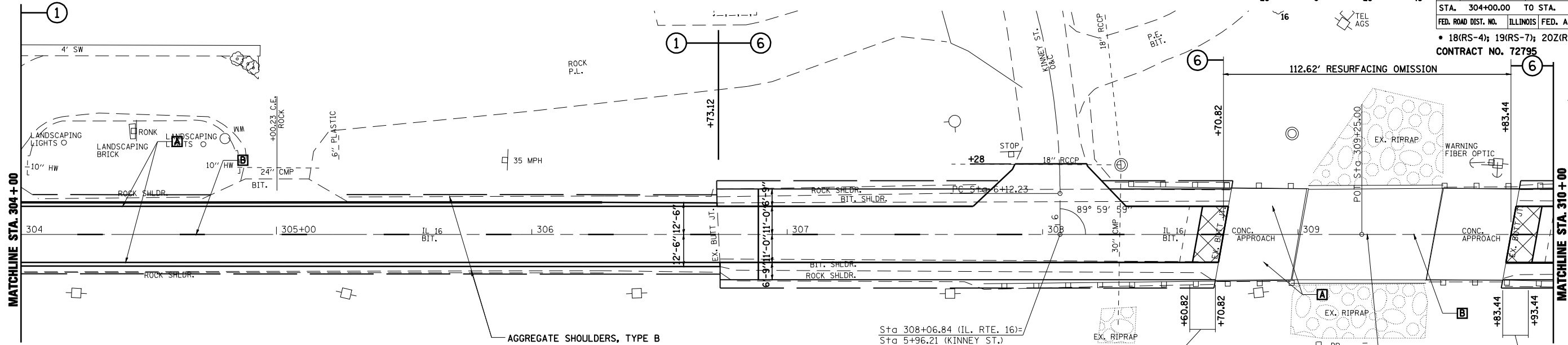
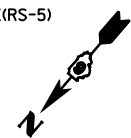
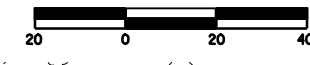


PLAN	SURVEYED	DATE
	PLOTTED	BY
	NOTED	
	BY	
	NO. OF WAY CHECKED	
	CADD FILE NAME	
	NO.	

PROFILE	SURVEYED	DATE
	PLOTTED	BY
	NOTED	
	BY	
	NO. OF WAY CHECKED	
	STRUCTURE NOTATIONS CHKD	
	NO.	

F.A.P. RTE.	SECTION	COUNTY	TOTAL SHEETS	SHEET NO.
325	*	MONTGOMERY	28	20
STA. 304+00.00	TO STA. 316+00.00			
FED. ROAD DIST. NO.	ILLINOIS	FED. AID PROJECT		
* 18(RS-4); 19(RS-7); 20Z(RS-5)				
CONTRACT NO. 72795				



**THERMOPLASTIC PAVEMENT MARKING LEGEND**

- A** 5" SOLID (WHITE)
- B** 5" SKIP-DASH (YELLOW)
- C** 5" SOLID (YELLOW)
- D** 5" DOUBLE YELLOW (WIDE)

**PREFORMED PLASTIC PAVEMENT MARKING, TYP. B LEGEND**

- 1** 6" SOLID (WHITE)
- 2** 24" STOP BAR (WHITE)
- 3** 6" CROSSWALKS (WHITE)
- 4** LETTERS & SYMBOLS
- 5** 12" DIAGONAL (WHITE)
- 6** 12" DIAGONAL (YELLOW)

**13"** ITEM **D** 5" DOUBLE YELLOW (WIDE)

**KINNEY STREET**  
 EXIST. CURVE 313  
 P.I. STA. = 7+42.74  
 $\Delta = 50^\circ 59' 39''$   
 $D = 20^\circ 32' 44''$   
 $R = 278.87'$   
 $T = 130.52'$   
 $L = 244.14'$

HMA SURFACE REMOVAL - BUTT JOINT  
 SEE RAMP "A" DETAIL SHEET 26

**THERMOPLASTIC PAVEMENT MARKING LEGEND**

- A** 5" SOLID (WHITE)
- B** 5" SKIP-DASH (YELLOW)
- C** 5" SOLID (YELLOW)
- D** 5" DOUBLE YELLOW (WIDE)

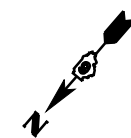
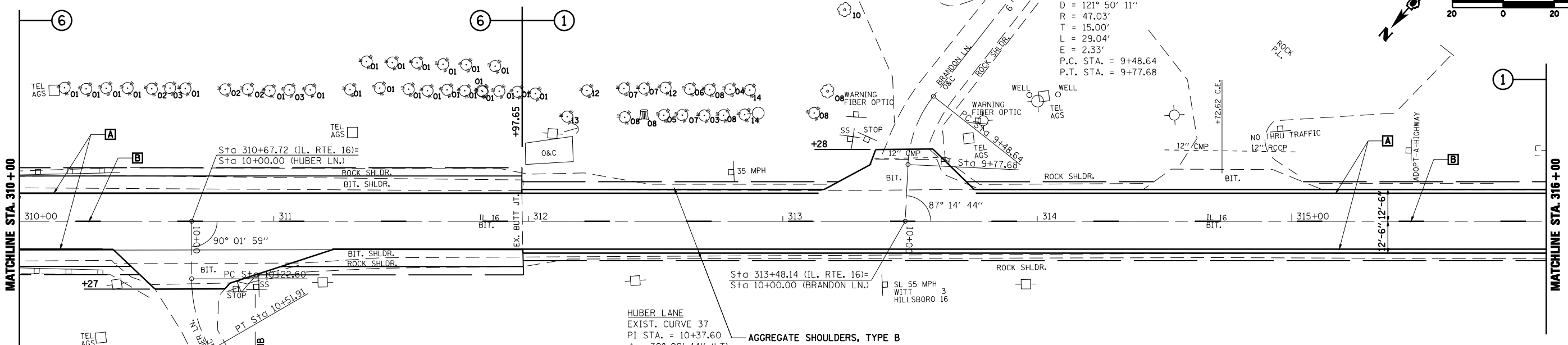
**PREFORMED PLASTIC PAVEMENT MARKING, TYP. B LEGEND**

- 1** 6" SOLID (WHITE)
- 2** 24" STOP BAR (WHITE)
- 3** 6" CROSSWALKS (WHITE)
- 4** LETTERS & SYMBOLS
- 5** 12" DIAGONAL (WHITE)
- 6** 12" DIAGONAL (YELLOW)

**13"** ITEM **D** 5" DOUBLE YELLOW (WIDE)

**KINNEY STREET**  
 EXIST. CURVE 313  
 P.I. STA. = 7+42.74  
 $\Delta = 50^\circ 59' 39''$   
 $D = 20^\circ 32' 44''$   
 $R = 278.87'$   
 $T = 130.52'$   
 $L = 244.14'$

HMA SURFACE REMOVAL - BUTT JOINT  
 SEE RAMP "A" DETAIL SHEET 26



**BRANDON LANE**  
 EXIST. CURVE 44  
 P.I. STA. = 9+63.64  
 $\Delta = 35^\circ 22' 55''$  (LT)  
 $D = 121^\circ 50' 11''$   
 $R = 47.03'$   
 $T = 15.00'$   
 $L = 29.04'$   
 $E = 2.33'$   
 P.C. STA. = 9+48.64  
 P.T. STA. = 9+77.68

**HUBER LANE**  
 EXIST. CURVE 37  
 P.I. STA. = 10+37.60  
 $\Delta = 30^\circ 09' 14''$  (LT)  
 $D = 102^\circ 53' 57''$   
 $R = 55.68'$   
 $T = 15.00'$   
 $L = 29.30'$   
 $E = 1.99'$   
 P.C. STA. = 10+22.60  
 P.T. STA. = 10+51.91

REVISIONS	
NAME	DATE

ILLINOIS DEPARTMENT OF TRANSPORTATION  
**F.A.P. ROUTE 325**  
**PLAN SHEET 6 OF 7**  
**(PART "A")**

DATE 3/2004  
 DRAWN BY MLO  
 CHECKED BY SJK