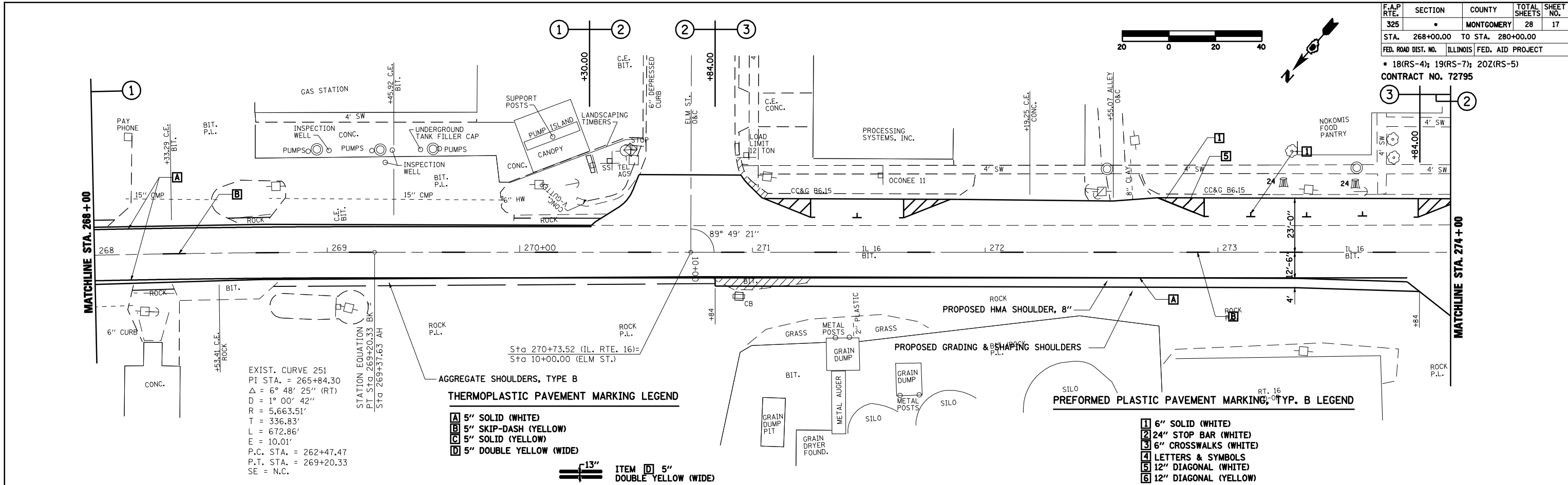
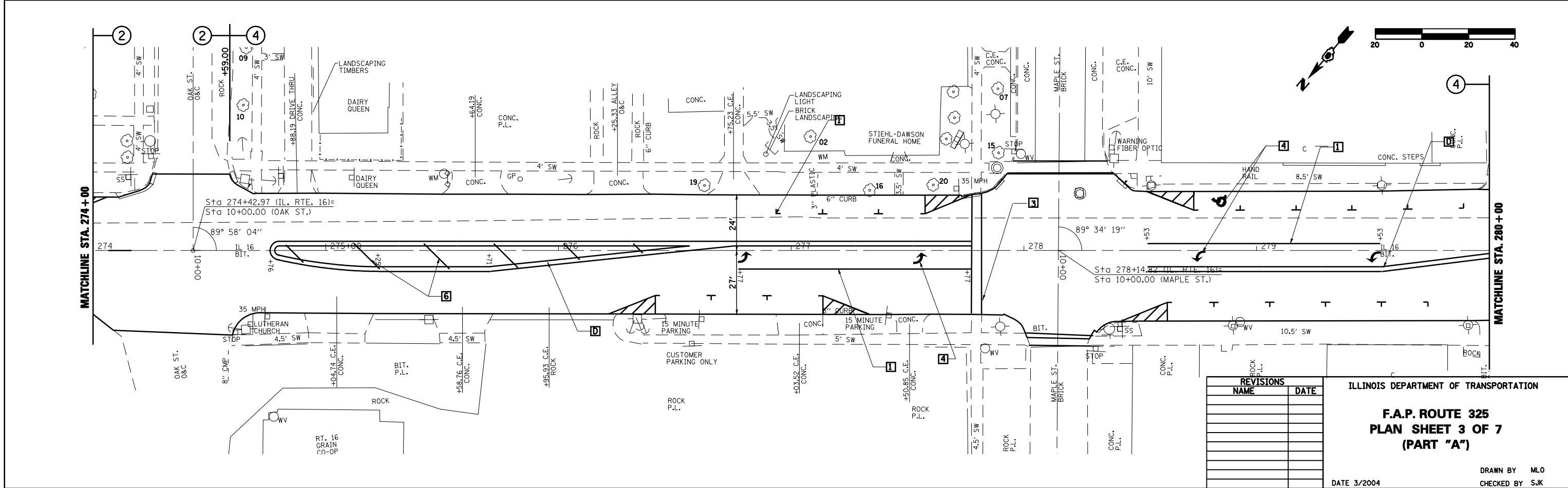


F.A.P. RTE.	SECTION	COUNTY	TOTAL SHEETS	SHEET NO.
325	*	MONTGOMERY	28	17
STA. 268+00.00 TO STA. 280+00.00				
FED. ROAD DIST. NO. ILLINOIS FED. AID PROJECT				
* 18(RS-4); 19(RS-7); 20Z(RS-5)				
CONTRACT NO. 72795				

PLAN	SURVEYED	DATE
	PLOTTED	
	CHECKED	
	BY	
	NO. OF WAY CHECKED	
	CADD FILE NAME	
	NO.	



PROFILE	SURVEYED	DATE
	PLOTTED	
	CHECKED	
	BY	
	NO. OF WAY CHECKED	
	STRUCTURE NOTATIONS CHKD	
	NO.	



REVISIONS	
NAME	DATE

ILLINOIS DEPARTMENT OF TRANSPORTATION

**F.A.P. ROUTE 325**  
**PLAN SHEET 3 OF 7**  
**(PART "A")**

DATE 3/2004

DRAWN BY MLO  
 CHECKED BY SJK