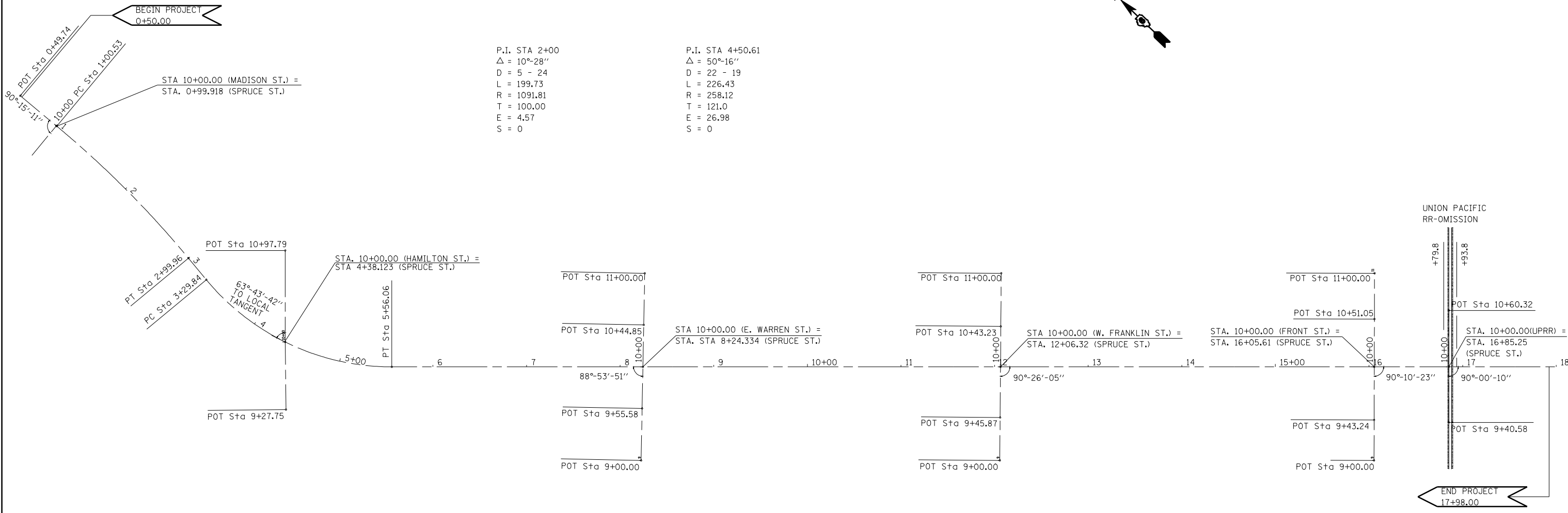
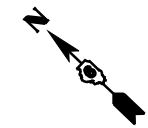


F.A.S. RTE.	SECTION	COUNTY	TOTAL SHEETS	SHEET NO.
723	*	MONTGOMERY	28	13
STA.		TO STA.		
FED. ROAD DIST. NO.		ILLINOIS	FED. AID PROJECT	
• 18(RS-4); 19(RS-7); 20Z(RS-5)				



P.I. STA 2+00
 $\Delta = 10^{\circ}-28''$
 D = 5 - 24
 L = 199.73
 R = 1091.81
 T = 100.00
 E = 4.57
 S = 0

P.I. STA 4+50.61
 $\Delta = 50^{\circ}-16''$
 D = 22 - 19
 L = 226.43
 R = 258.12
 T = 121.0
 E = 26.98
 S = 0

UNION PACIFIC
RR-OMISSION

END PROJECT
17+98.00

PLOT DATE = Jan-22-2009 08:43:56PM
 FILE NAME = c:\pwworkspace\PROJECTS\72795-Horiz-Align.dgn
 PLOT SCALE = 1/8"=1'-0" / IN.
 USER NAME = laughlinr-1

REVISIONS	
NAME	DATE

ILLINOIS DEPARTMENT OF TRANSPORTATION

**HORIZONTAL ALIGNMENT
(PART "B")**

SCALE: VERT. _____
 HORIZ. _____

DATE _____

DRAWN BY _____
 CHECKED BY _____