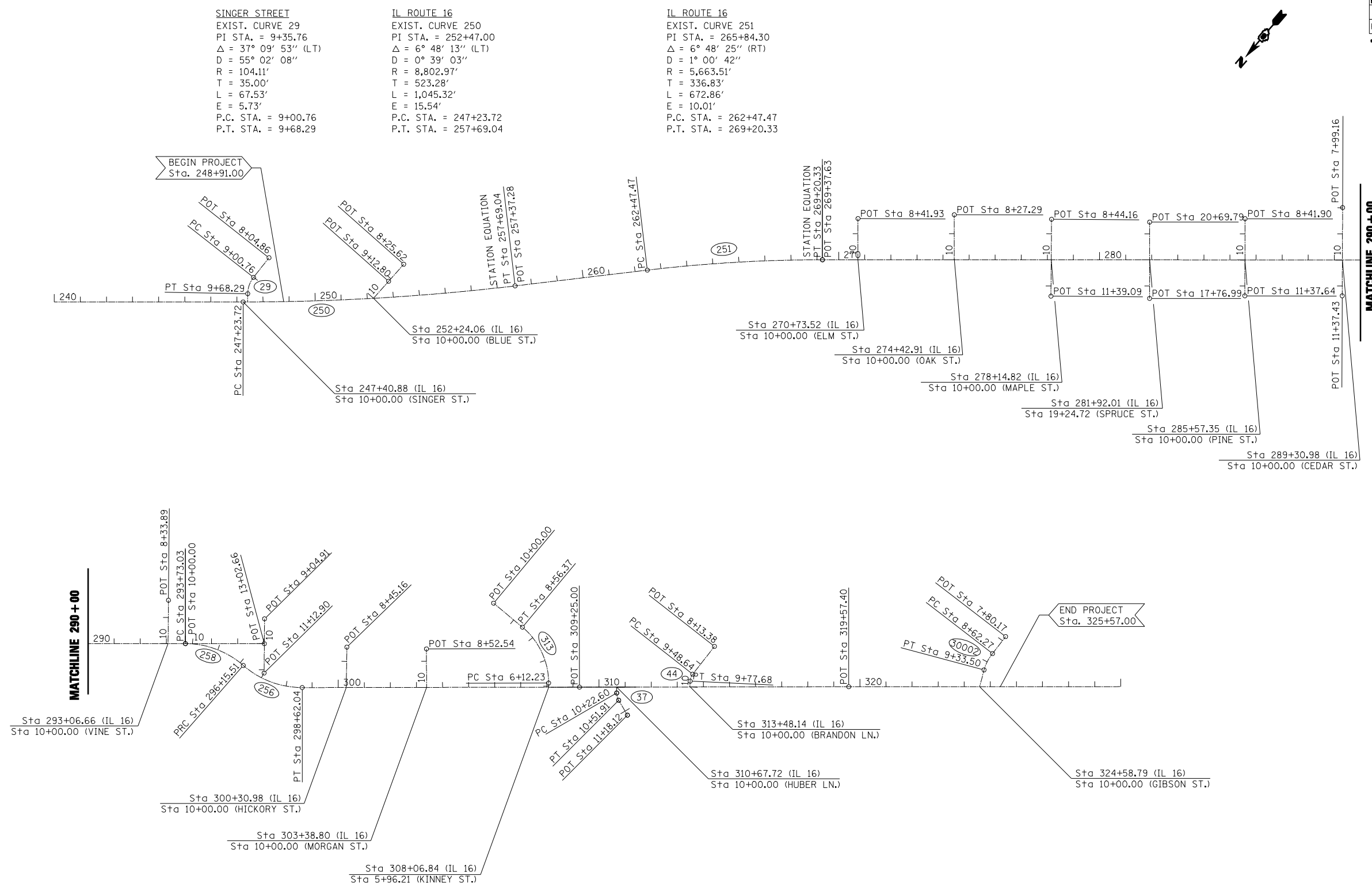


F.A.P. RTE.	SECTION	COUNTY	TOTAL SHEETS	SHEET NO.
325	•	MONTGOMERY	28	12
FED. ROAD DIST. NO. ILLINOIS FED. AID PROJECT				
• 18(RS-4); 19(RS-7); 20Z(RS-5)				
CONTRACT NO. 72795				



SINGER STREET
 EXIST. CURVE 29
 PI STA. = 9+35.76
 $\Delta = 37^\circ 09' 53''$ (LT)
 D = 55° 02' 08"
 R = 104.11'
 T = 35.00'
 L = 67.53'
 E = 5.73'
 P.C. STA. = 9+00.76
 P.T. STA. = 9+68.29

IL ROUTE 16
 EXIST. CURVE 250
 PI STA. = 252+47.00
 $\Delta = 6^\circ 48' 13''$ (LT)
 D = 0° 39' 03"
 R = 8,802.97'
 T = 523.28'
 L = 1,045.32'
 E = 15.54'
 P.C. STA. = 247+23.72
 P.T. STA. = 257+69.04

IL ROUTE 16
 EXIST. CURVE 251
 PI STA. = 265+84.30
 $\Delta = 6^\circ 48' 25''$ (RT)
 D = 1° 00' 42"
 R = 5,663.51'
 T = 336.83'
 L = 672.86'
 E = 10.01'
 P.C. STA. = 262+47.47
 P.T. STA. = 269+20.33

IL ROUTE 16
 EXIST. CURVE 258
 PI STA. = 294+99.80
 $\Delta = 41^\circ 15' 41''$ (RT)
 D = 17° 00' 58"
 R = 336.71'
 T = 126.77'
 L = 242.48'
 E = 23.07'
 e = EXIST.
 P.C. STA. = 293+73.03
 P.T. STA. = 296+15.51

IL ROUTE 16
 EXIST. CURVE 256
 PI STA. = 297+44.43
 $\Delta = 41^\circ 22' 06''$ (LT)
 D = 16° 46' 51"
 R = 341.44'
 T = 128.91'
 L = 246.52'
 E = 23.52'
 e = EXIST.
 P.C. STA. = 296+15.51
 P.T. STA. = 298+62.04

KINNEY STREET
 EXIST. CURVE 313
 PI STA. = 7+42.74
 $\Delta = 50^\circ 09' 38''$ (LT)
 D = 20° 32' 44"
 R = 278.87'
 T = 130.52'
 L = 244.14'
 E = 29.03'
 P.C. STA. = 6+12.23
 P.T. STA. = 8+56.37

HUBER LANE
 EXIST. CURVE 37
 PI STA. = 10+37.60
 $\Delta = 30^\circ 09' 14''$ (LT)
 D = 102° 53' 57"
 R = 55.68'
 T = 15.00'
 L = 29.30'
 E = 1.99'
 P.C. STA. = 10+22.60
 P.T. STA. = 10+51.91

BRANDON LANE
 EXIST. CURVE 44
 PI STA. = 9+63.64
 $\Delta = 35^\circ 22' 55''$ (LT)
 D = 121° 50' 11"
 R = 47.03'
 T = 15.00'
 L = 29.04'
 E = 2.33'
 P.C. STA. = 9+48.64
 P.T. STA. = 9+77.68

GIBSON STREET
 EXIST. CURVE 30002
 PI STA. = 8+98.46
 $\Delta = 24^\circ 52' 44''$ (LT)
 D = 34° 55' 39"
 R = 164.04'
 T = 36.19'
 L = 71.23'
 E = 3.94'
 P.C. STA. = 8+62.27
 P.T. STA. = 9+33.50

REVISIONS	
NAME	DATE

ILLINOIS DEPARTMENT OF TRANSPORTATION

**HORIZONTAL ALIGNMENT
(PART "A")**

SCALE: VERT. 1" = 200'
 HORIZ. 1" = 200'

DATE: 3/3/04

DRAWN BY: LCH
 CHECKED BY: SJK