

STATE OF ILLINOIS  
DEPARTMENT OF TRANSPORTATION  
DIVISION OF HIGHWAYS

**PROPOSED  
HIGHWAY PLANS**

F.A.P. ROUTE 836 (IL 49)  
SECTION 119 RS-4 & 119Z RS-2  
PROJECT ESP-0836(028)  
CHAMPAIGN COUNTY

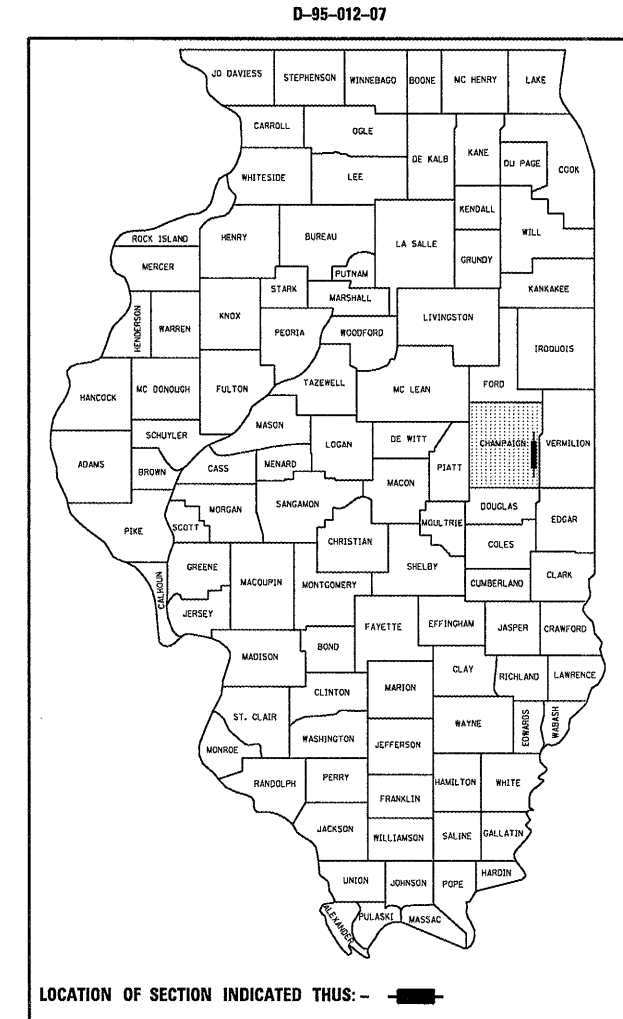
RESURFACING (3P) FROM U.S. 150 AT OGDEN  
TO SCL OF HOMER

C-95-012-07

F.A.P. RTE.	SECTION	COUNTY	TOTAL SHEETS	SHEET NO.
836	119 RS-4 & 119Z RS-2	CHAMPAIGN	26	1
		ILLINOIS	CONTRACT NO. 70642	

FOR INDEX OF SHEETS, SEE SHEET NO. 2  
FOR SUMMARY OF QUANTITIES, SEE SHEET NO. 3

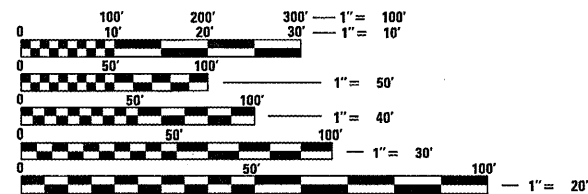
HMA RESURFACING (2.25") ON STRUCTURES  
S.N. 010-8102  
S.N. 010-8606



**CURRENT ADT**

SCL OF HOMER TO FAS 512	=	2,750 (2009)
FAS 512 TO US 150	=	3,300 (2009)

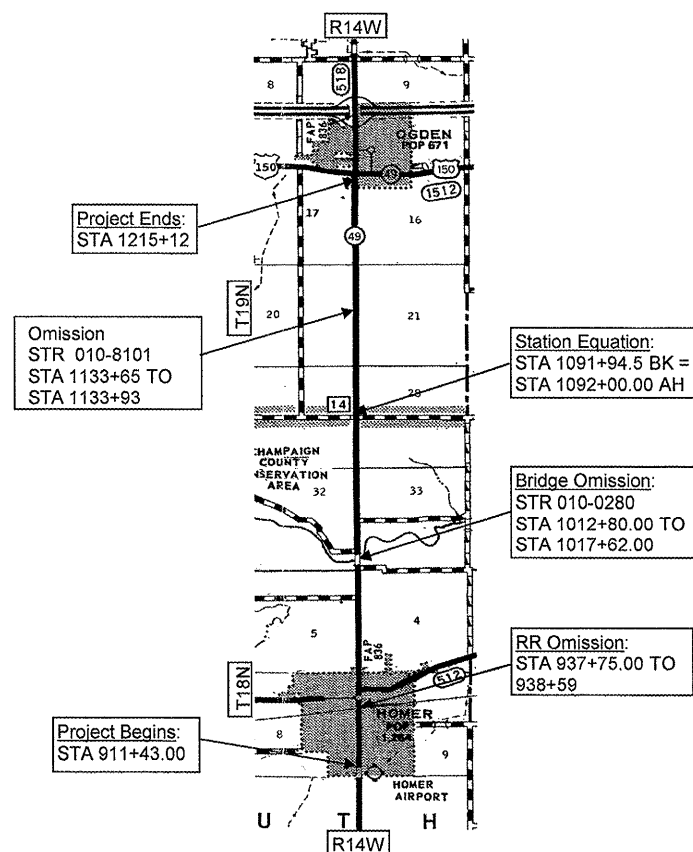
**DESIGN DESIGNATION**  
N/A



FULL SIZE PLANS HAVE BEEN PREPARED USING STANDARD ENGINEERING SCALES. REDUCED SIZED PLANS WILL NOT CONFORM TO STANDARD SCALES. IN MAKING MEASUREMENTS ON REDUCED PLANS, THE ABOVE SCALES MAY BE USED.

J.U.L.I.E.  
JOINT UTILITY LOCATION INFORMATION FOR EXCAVATION  
1-800-892-0123  
OR 811

PROJECT ENGINEER: KEVIN TRAPP  
PROJECT MANAGER: CHRIS GREESON  
DESIGNER: AMBER WEISER  
217-465-4181  
CONTRACT NO. 70642



GROSS LENGTH = 30,363.50 FT. = 5.751 MILES  
NET LENGTH = 29,769.50 FT. = 5.638 MILES

STATE OF ILLINOIS  
DEPARTMENT OF TRANSPORTATION  
DIVISION OF HIGHWAYS

SUBMITTED 2/6 2009

*Joseph E. Zuber, Inc.*  
DEPUTY DIRECTOR OF HIGHWAYS, REGION ENGINEER

March 13, 2009  
*Charles G. Ingersoll*  
ENGINEER OF DESIGN AND ENVIRONMENT

March 13, 2009  
*Christine M. Reed*  
DIRECTOR OF HIGHWAYS, CHIEF ENGINEER

PRINTED BY THE AUTHORITY  
OF THE STATE OF ILLINOIS