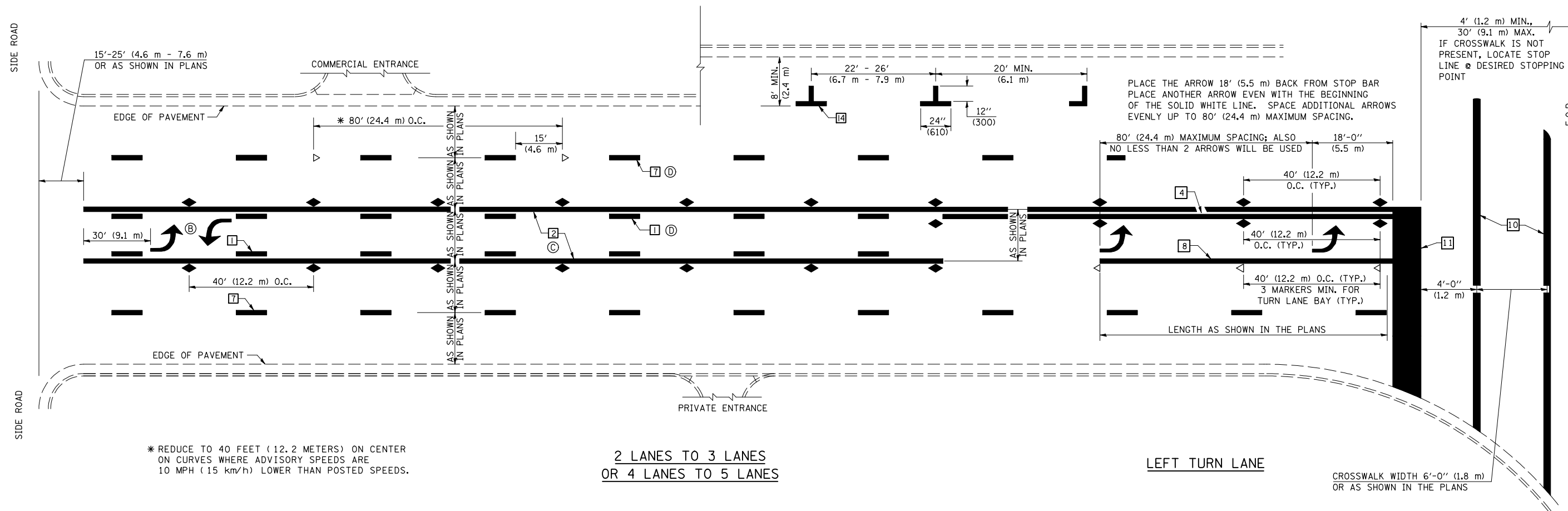


F.A.S. RTE.	SECTION	COUNTY	TOTAL SHEETS	SHEET NO.
294	*	MCLEAN	22	20

STA.	TO STA.
FED. ROAD DIST. NO.	ILLINOIS FED. AID PROJECT

*(14R2 & 15R1)RS-1

TYPICAL APPLICATIONS OF PAVEMENT MARKINGS AND MARKERS



* REDUCE TO 40 FEET (12.2 METERS) ON CENTER ON CURVES WHERE ADVISORY SPEEDS ARE 10 MPH (15 km/h) LOWER THAN POSTED SPEEDS.

2 LANES TO 3 LANES
OR 4 LANES TO 5 LANES

LEFT TURN LANE

CROSSWALK WIDTH 6'-0" (1.8 m)
OR AS SHOWN IN THE PLANS

PLOT DATE = 1/14/2009
FILE NAME = c:\pwworkspace\PIERSONBR\d012345\dlisth1.s.dgn
USER NAME = pier_sonbr

SHEET 2 OF 4

	NAME	DATE	REVISIONS	
DESIGNED	J.M.H.	5/85	NAME	DATE
CHECKED	FMS	6/85	GEOMETRICS/K.A.G.	07/02
CADD NO.	F-5.25	6/88	K.A.G.	09/05

ALL DIMENSIONS ARE IN INCHES (MILLIMETERS) UNLESS OTHERWISE SHOWN.

ILLINOIS DEPARTMENT OF TRANSPORTATION
TYPICAL APPLICATIONS OF PAVEMENT MARKINGS AND MARKERS DETAIL
 F.A.S. ROUTE 294 (OLD U.S. ROUTE 66)
 SECTION (14R2 & 15R1)RS-1
 MCLEAN COUNTY
 Sheet 2 of 4
 SCALE: NOT TO SCALE DATE: 08/02/06