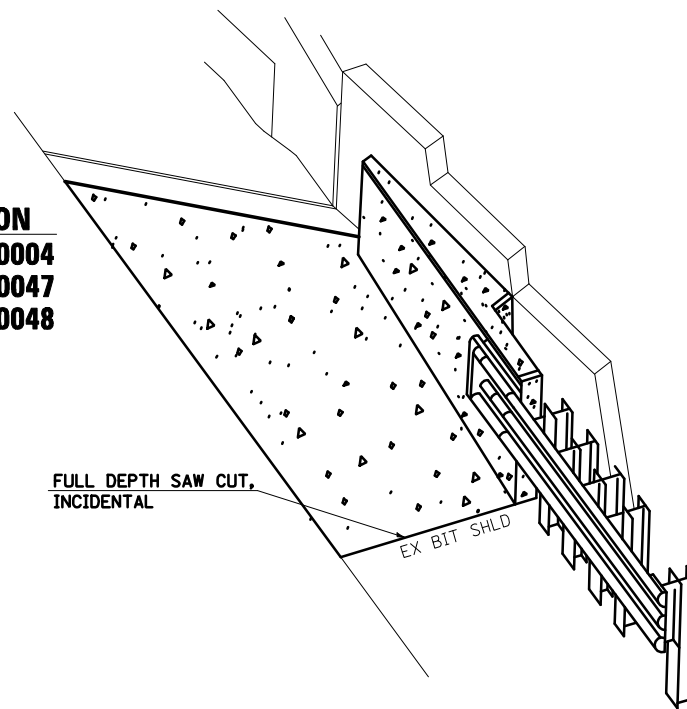
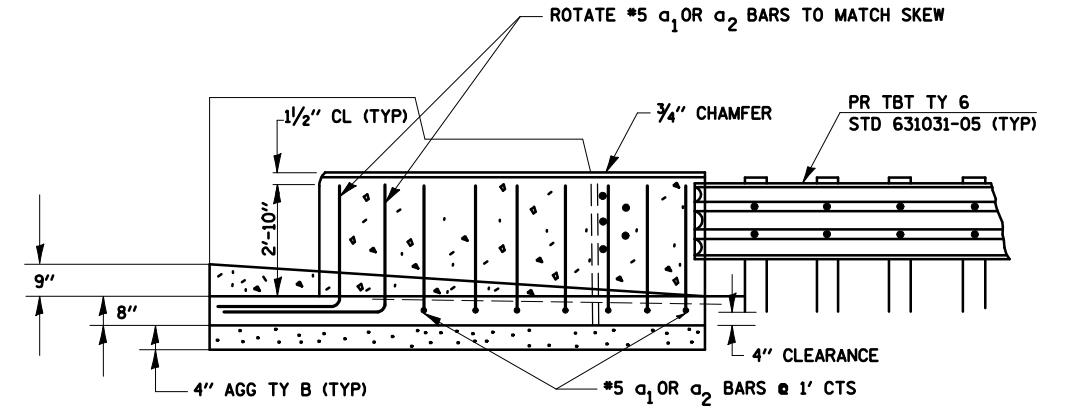


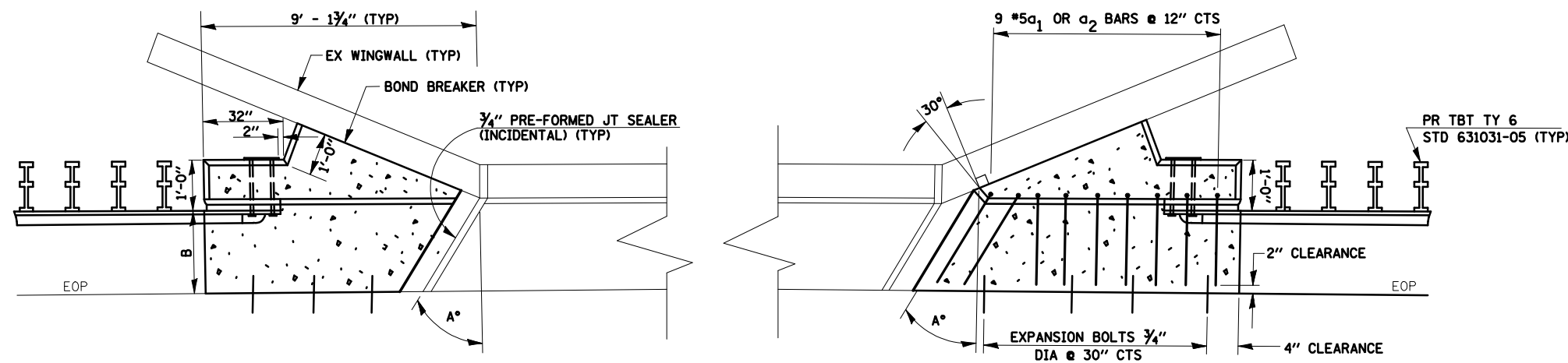
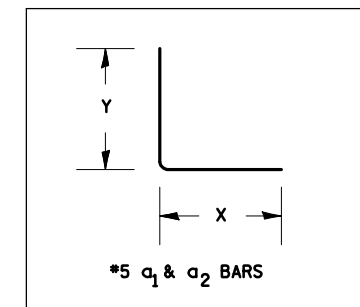
LOCATION
 SN 057-0004
 SN 057-0047
 SN 057-0048



PRESPECTIVE



**ELEVATION
 SHOWING REINFORCEMENT**



PLAN VIEW

TABLE OF DIMENSIONS

LOCATION	(A)	(B)	REINFORCEMENT BARS			
	SKEW ANGLE	BASE WIDTH	BAR	SIZE	DIMENSION X	DIMENSION Y
SN 057-0047	1°-55'-06.83"	4'-3"	a2	#5	4'-3"	2'-10"
SN 057-0048	1°-55'-06.83"	4'-3"	a2	#5	4'-3"	2'-10"
SN 057-0059	4°-01'-50"	1'-10"	a1	#5	1'-10"	2'-10"
SN 057-0062	58°-48'-30"	1'-10"	a1	#5	1'-10"	2'-10"

TOTAL BILL OF MATERIALS

ITEM	UNIT	057-0047	** 057-0048	057-0059	057-0062	TOTAL
BITUMINOUS SHOULDER REMOVAL	SQ YD	18	13	5	5	41
REINFORCEMENT BARS, EPOXY COATED	PDS	270	200	176	176	822
AGGREGATE BASE COURSE TYPE B	TON	5.2	4	2.1	2.1	13.4
EXPANSIONS BOLTS 3/4"	EACH	16	12	16	16	60
CONCRETE SUPERS-STRUCTURE	CU YD	13.3	10	7	7	37.3

NOTE: ** NE QUADRANT OF SN 057-0048 IS COMPLETE, NO WORK NEEDED IN THIS QUADRANT.

FILE NAME =	USER NAME = shererjm	DESIGNED - JMS	REVISED -
ct:\pw\work\PWID01\SHERERJM\dms83233\70605details.dgn		DRAWN - JMS	REVISED -
	PLOT SCALE = 100.0000' / IN.	CHECKED -	REVISED -
	PLOT DATE = 1/29/2009	DATE - 6/03/2008	REVISED -

**STATE OF ILLINOIS
 DEPARTMENT OF TRANSPORTATION**

**DETAIL FOR TYPE 6 TERMINAL ATTACHMENT
 TO PARAPET WALL**

SCALE: NO SCALE SHEET NO. OF SHEETS STA. TO STA.

F.A.P. RTE.	SECTION	COUNTY	TOTAL SHEETS	SHEET NO.
74	57-20(1)&(57-4,5,6)RS-3	MCLEAN	160	120
FED. ROAD DIST. NO. ILLINOIS FED. AID PROJECT			CONTRACT NO. 70505	