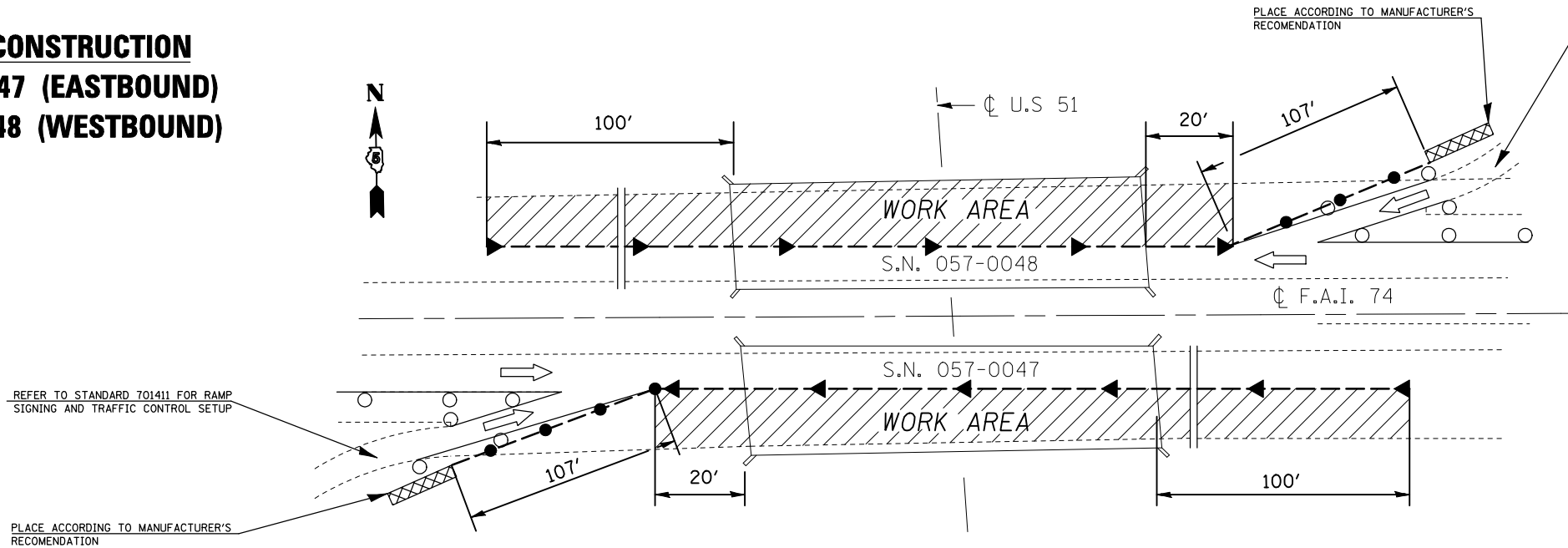


STAGE I CONSTRUCTION
S.N. 057-0047 (EASTBOUND)
S.N. 057-0048 (WESTBOUND)



REFER TO STANDARD 701411 FOR RAMP SIGNING AND TRAFFIC CONTROL SETUP

70400100 TEMPRARY CONCRETE BARRIER

| | STATION | STATION | FOOT |
|-----------------------------|------------------|------------------|----------------------|
| STAGE I CONSTRUCTION | | | |
| 057-0047 | 717+43.72 | 721+55.30 | 411.8 |
| 057-0048 | 717+74.77 | 721+79.36 | 404.6 |
| | | | TOTAL = 816.2 |

REFER TO STANDARD 701411 FOR RAMP SIGNING AND TRAFFIC CONTROL SETUP

PLACE ACCORDING TO MANUFACTURER'S RECOMMENDATION

PLAN NOTES:

ALL STAGING DETAILS SET UP IN ACCORDANCE WITH TRAFFIC CONTROL AND PROTECTION 701402.

PRIOR TO BARRIER PLACEMENT TRAFFIC CONTROL SHALL BE SET UP IN ACCORDANCE WITH STANDARD 701406.

TRAFFIC CONTROL DETAILS NOT SHOWN ARE TO CONFORM WITH STANDARD 701400 AND 701402.

MESSAGE BOARD SHALL BE PLACED TWO WEEKS PRIOR TO CONSTRUCTION AND MAY BE ADJUSTED TO MEET FIELD CONDITIONS.

RESIDENT ENGINEER AND TRAFFIC CONTROL SUPERVISOR SHALL PROVIDE APPROPRIATE MESSAGE FOR CMS.

RAISED REFLECTIVE PAVEMENT MARKERS AFFECTED BY THE PROPOSED CONSTRUCTION SHALL BE REPLACED. THIS COST SHALL BE INCIDENTAL TO THE VARIOUS TRAFFIC CONTROL PAY ITEMS.

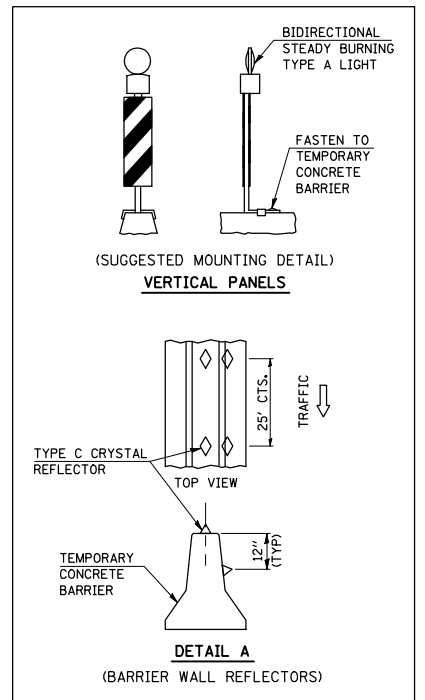
REFLECTORS AND VERTICAL PANELS FOR BARRIER WALL, BRIDGE RAIL AND GUARDRAIL SHALL BE INCLUDED IN THE COST FOR THE APPLICABLE TRAFFIC CONTROL PAY ITEMS.

ATTACH VERTICAL PANELS TO THE LEFT GUARDRAIL AT 25 FOOT CENTERS DURING STAGE II. THIS COST WILL BE INCIDENTAL TO STANDARD 701402.

REFLECTORIZED TEMPORARY MARKING TAPE SHALL BE PLACED THROUGHOUT THE TAPER AND ALONG-SIDE THE WORK AREA. THE EDGE LINE SHALL BE YELLOW FOR LEFT LANE CLOSURES. COST FOR THE PLACEMENT AND REMOVAL SHALL BE INCLUDED IN COST FOR APPLICABLE TRAFFIC CONTROL PAY ITEM.

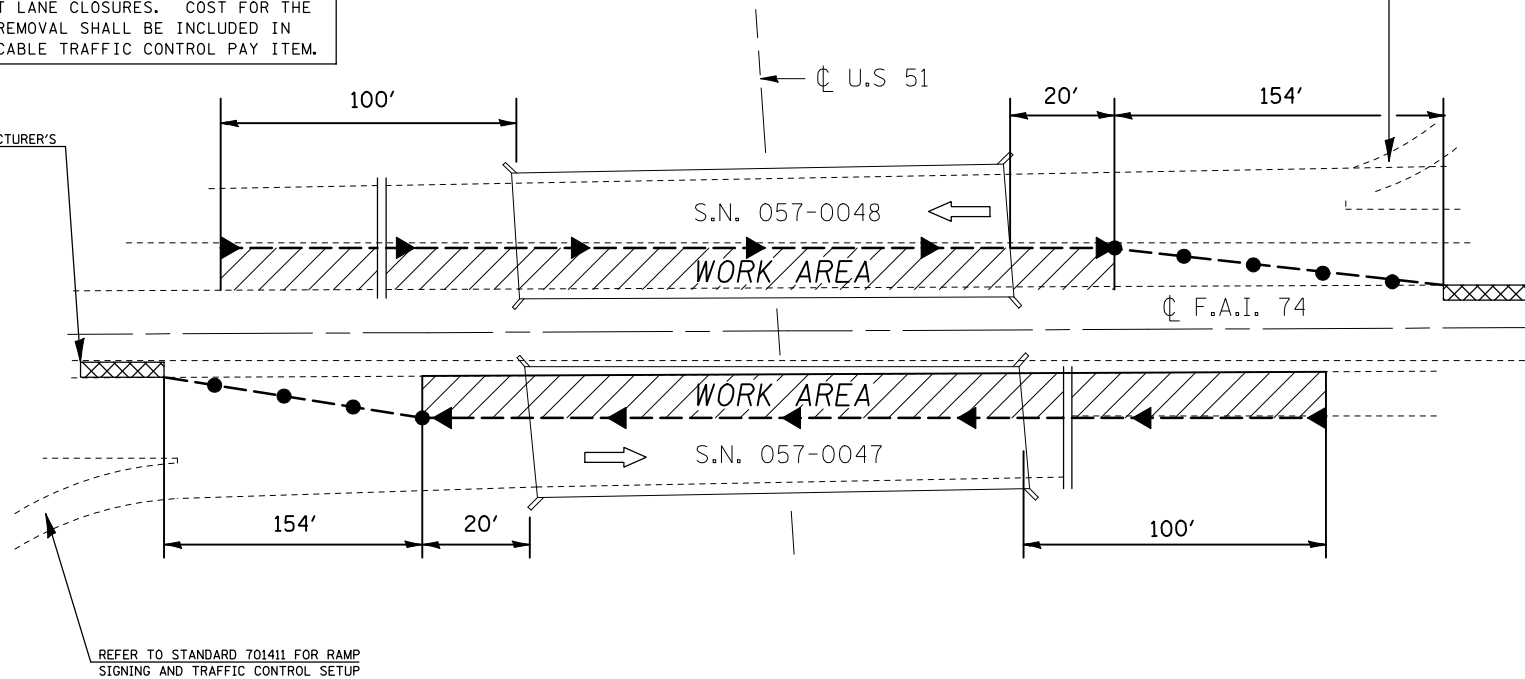
SYMBOLS

- ◀ AMBER MONODIRECTIONAL REFLECTOR 25' CTS
- ◁ CRYSTAL MONODIRECTIONAL REFLECTOR 25' CTS
- TEMPORARY CONCRETE BARRIER
- VERTICAL PANELS WITH STEADY BURNING LIGHTS ALONG TAPER 25' CTS
- ▣ IMPACT ATTENUATOR



STAGE II CONSTRUCTION
S.N. 057-0047 (EASTBOUND)
S.N. 057-0048 (WESTBOUND)

PLACE ACCORDING TO MANUFACTURER'S RECOMMENDATION



REFER TO STANDARD 701411 FOR RAMP SIGNING AND TRAFFIC CONTROL SETUP

PLACE ACCORDING TO MANUFACTURER'S RECOMMENDATION

70400100 TEMPRARY CONCRETE BARRIER

| | STATION | STATION | FOOT |
|------------------------------|------------------|------------------|---------------------|
| STAGE II CONSTRUCTION | | | |
| SN 057-0047 | 716+96.72 | 717+43.72 | 47.0 |
| SN 057-0048 | 721+79.36 | 722+26.36 | 47.0 |
| | | | TOTAL = 94.0 |

70400100 TEMPRARY CONCRETE BARRIER

| | STATION | STATION | FOOT |
|------------------------------|------------------|------------------|---------------------|
| STAGE II CONSTRUCTION | | | |
| SN 057-0047 | 716+96.72 | 717+43.72 | 47.0 |
| SN 057-0048 | 721+79.36 | 722+26.36 | 47.0 |
| | | | TOTAL = 94.0 |

REFER TO STANDARD 701411 FOR RAMP SIGNING AND TRAFFIC CONTROL SETUP

SHEET 1 OF 1

| | | | |
|--|----------------------|-------------------|-----------|
| FILE NAME = | USER NAME = shererjm | DESIGNED - JMS | REVISED - |
| ct:\pw\work\PWID01\SHERERJM\dms83233\Brdge Staging Details.dgn | | DRAWN - JMS | REVISED - |
| | | CHECKED - JMS | REVISED - |
| | | DATE - 01-26-2009 | REVISED - |

STATE OF ILLINOIS
DEPARTMENT OF TRANSPORTATION

TRAFFIC CONTROL STAGING
S.N. 057-0047 & S.N. 057-0048

SCALE: SHEET NO. OF SHEETS STA. TO STA.

| | | | | |
|---------------------------|---------------------------|--------|--------------|-----------|
| F.A.I. RTE. | SECTION | COUNTY | TOTAL SHEETS | SHEET NO. |
| 74 | 57-20(1) & (57-4,5,6)RS-3 | MCLEAN | 160 | 115 |
| CONTRACT NO. 70505 | | | | |
| ILLINOIS FED. AID PROJECT | | | | |