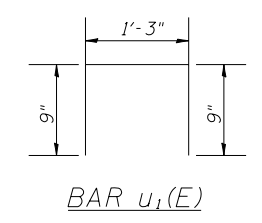
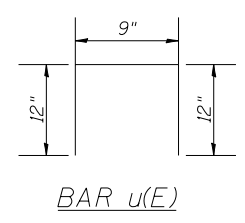
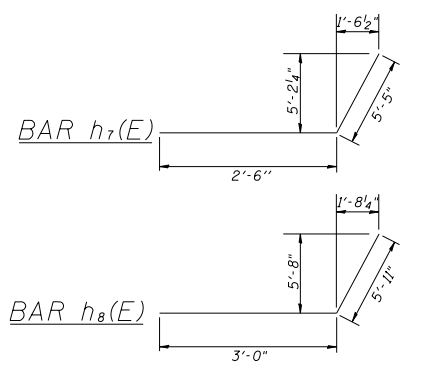
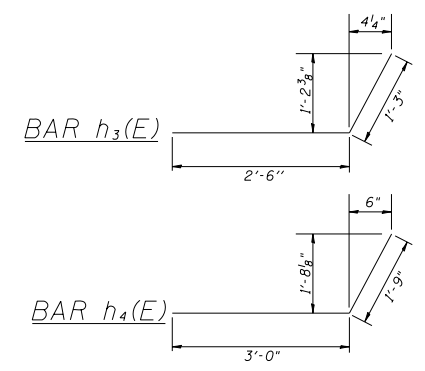


SECTION A-A
(Typical for joint replacement)

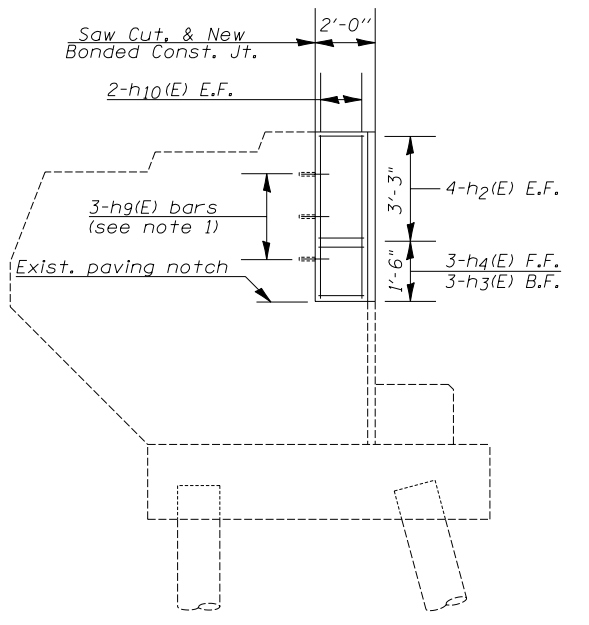
NOTES:

- Epoxy grout hg(E) bars in 9" Min. drilled holes according to Article 584 of the Standard Specs.
- Epoxy grout #5-v(E) & v1(E) bars in 7/8" dia. min. drilled holes (see Spec. Prov.) The method of grout application shall be approved by the engineer. The cost shall be incidental to the cost of reinforcement bars, epoxy coated.

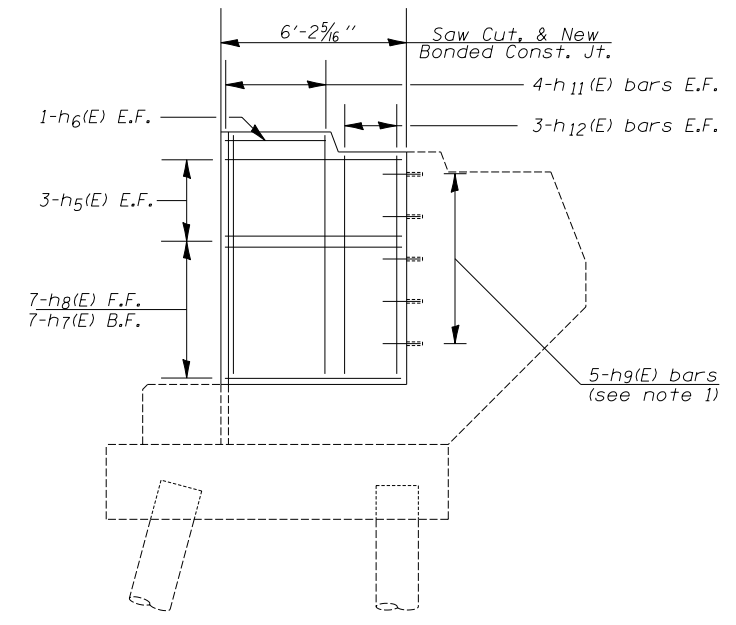


TWO ABUTMENTS
BILL OF MATERIAL

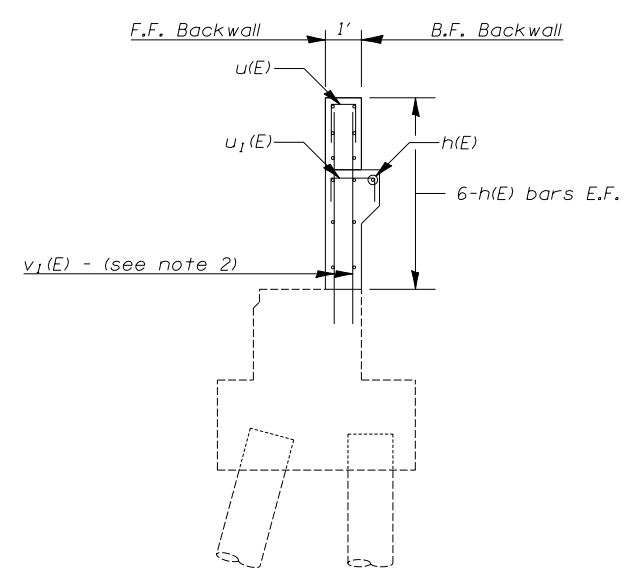
Bar	No.	Size	Length	Shape
h(E)	19	#6	16'-8"	—
h1(E)	12	#6	33'-2"	—
h2(E)	24	#4	1'-8"	—
h3(E)	9	#4	3'-9"	—
h4(E)	9	#4	4'-9"	—
h5(E)	6	#4	5'-10"	—
h6(E)	2	#4	3'-4"	—
h7(E)	7	#4	7'-11"	—
h8(E)	7	#4	8'-11"	—
h9(E)	14	#6	2'-0"	—
h10(E)	12	#4	4'-3"	—
h11(E)	8	#4	7'-2"	—
h12(E)	6	#4	6'-6"	—
u(E)	106	#4	2'-9"	□
u1(E)	16	#4	2'-9"	□
v(E)	58	#4	1'-9"	—
v1(E)	12	#4	4'-6"	—
Reinforcement Bars, Epoxy Coated			Pound	1730
Concrete Removal			Cu. Yds.	11.1
Concrete Superstructure			Cu. Yds.	11.1
Bar Splicers			Each	12



WINGWALL REINFORCEMENT
057-0048 West Abutment
057-0047 East Abutment, South Wing



WINGWALL REINFORCEMENT
057-0047 East Abutment, North Wing



SECTION THRU ABUTMENT
(At backwall replacement area - 057-0047 East Abut.)

For wing dimensions, see sheet 7A of 11A