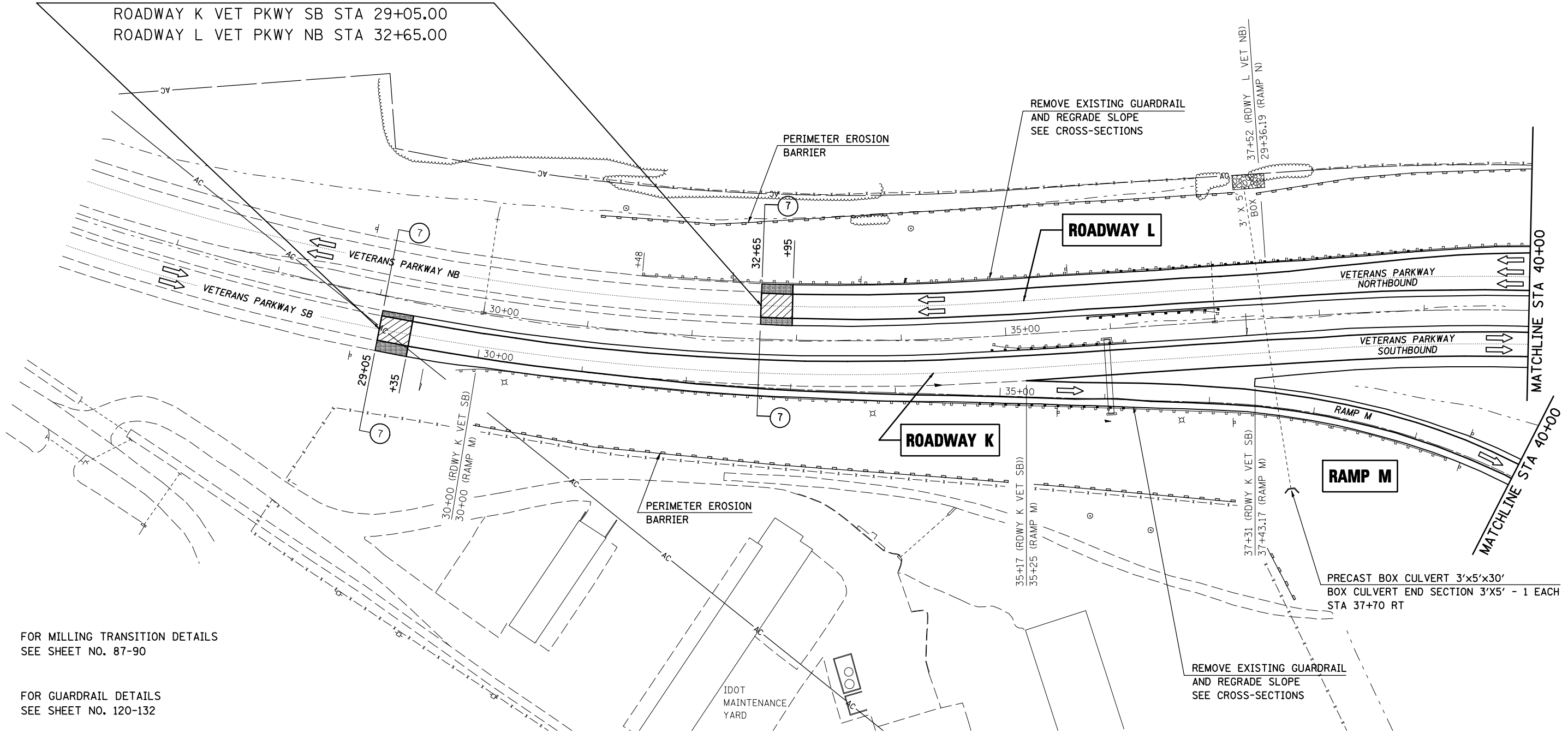




SECTION 57-20(1) & (57-4,5,6)RS-3 BEGINS  
 ROADWAY K VET PKWY SB STA 29+05.00  
 ROADWAY L VET PKWY NB STA 32+65.00



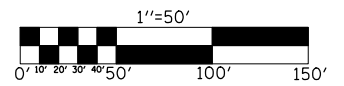
FOR MILLING TRANSITION DETAILS  
 SEE SHEET NO. 87-90

FOR GUARDRAIL DETAILS  
 SEE SHEET NO. 120-132

 MILLING TRANSITION, 3 1/2"-2 1/4"

 HMA SURFACE REMOVAL-BUTT JOINT

SHEET 1 OF 4



FILE NAME =	USER NAME = shererjm	DESIGNED - JMS	REVISED -
ct:\pw\work\PWIDOT\SHERRERJM\dms83233\7055SHEETS.DGN		DRAWN - JRP	REVISED -
	PLOT SCALE = 100.0000' / IN.	CHECKED -	REVISED -
	PLOT DATE = 1/30/2009	DATE - 05-20-08	REVISED -

**STATE OF ILLINOIS  
 DEPARTMENT OF TRANSPORTATION**

**VETERANS PARKWAY NORTHBOUND & SOUTHBOUND**

SCALE: 1" = 50' PLAN VIEW SHEET 17 OF 21 STA 26+00 TO STA 40+00 (NB & SB)

F.A.I. RTE.	SECTION	COUNTY	TOTAL SHEETS	SHEET NO.
74	57-20(1) & (57-4,5,6)RS-3	MCLEAN	160	63
CONTRACT NO. 70505				
FED. ROAD DIST. NO. ILLINOIS FED. AID PROJECT				