

STATE OF ILLINOIS  
DEPARTMENT OF TRANSPORTATION  
DIVISION OF HIGHWAYS

**PROPOSED  
HIGHWAY PLANS**

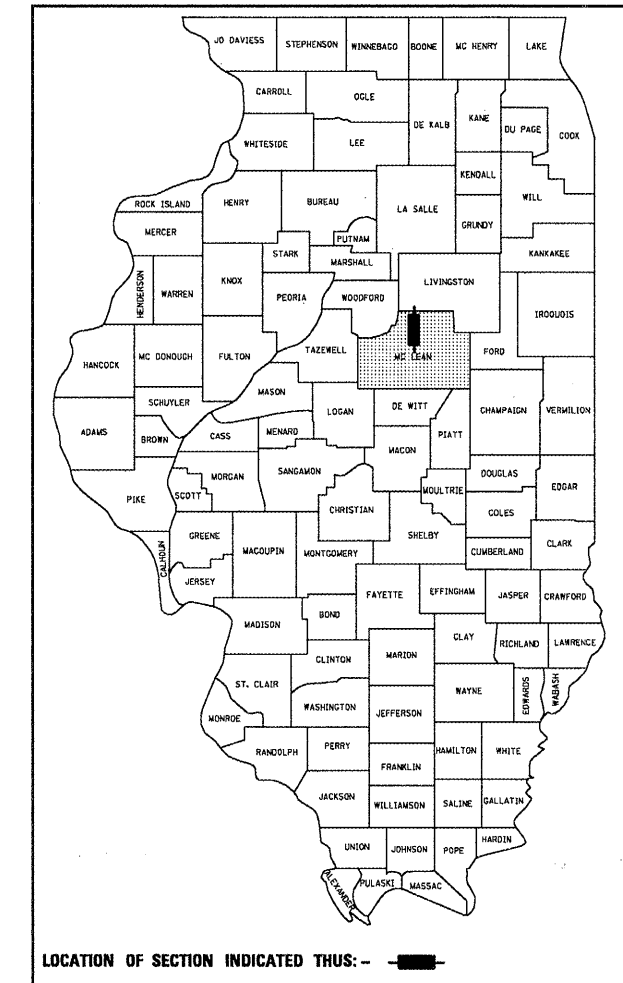
F.A.I ROUTE 74  
SECTION 57-20(1) & (57-4,5,6)RS-3  
PROJECT ESP-074-4(238)127  
MCLEAN COUNTY

C-95-026-06

NORTH OF I-55 BUSINESS LOOP TO EAST OF US 51 AT BLOOMINGTON  
BRIDGE REPAIR & RESURFACING (INT-3RD) PATCHING

F.A.I. RTE.	SECTION	COUNTY	TOTAL SHEETS	SHEET NO.
74	57-20(1) & (57-4,5,6)RS-3	MCLEAN	160	1
FED. ROAD DIST. NO.		ILLINOIS	CONTRACT NO. 70505	

D-95-025-06



FOR INDEX OF SHEETS, SEE SHEET NO. 2  
FOR SUMMARY OF QUANTITIES, SEE SHEET NO. 5 - 10  
FOR STRUCTURES AND OMISSIONS SEE SHEET NO. 48  
FOR DETAILED LOCATION MAP SEE SHEET NO. 48 \*

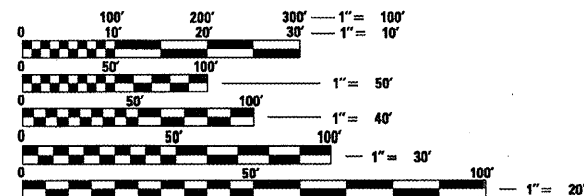
**CURRENT TRAFFIC DATA \***

F. A. I. ROUTE 74	I-55 NB & SB	
	EB	WB
2009 ADT =	13,100	12,800
PV % =	63.7	68.2
SU % =	7.4	7.6
MU % =	28.9	24.2

VETERANS PARKWAY NB & SB	LEG A		LEG B		LEG C	
	ADT	PV %	ADT	PV %	ADT	PV %
2009 ADT =	5,300	92.0	7,000	91.4	10,600	90.7
PV % =	3.8	4.3	4.3	4.9	4.4	4.4
SU % =	4.2	4.3	4.3	4.4	4.4	4.4
MU % =	4.2	4.3	4.3	4.4	4.4	4.4

PROJECT BEGINS  
I-74 EB RDWY A = 603+50.00  
I-74 WB RDWY D = 607+00.00  
I-55 SB RDWY G = 603+50.00

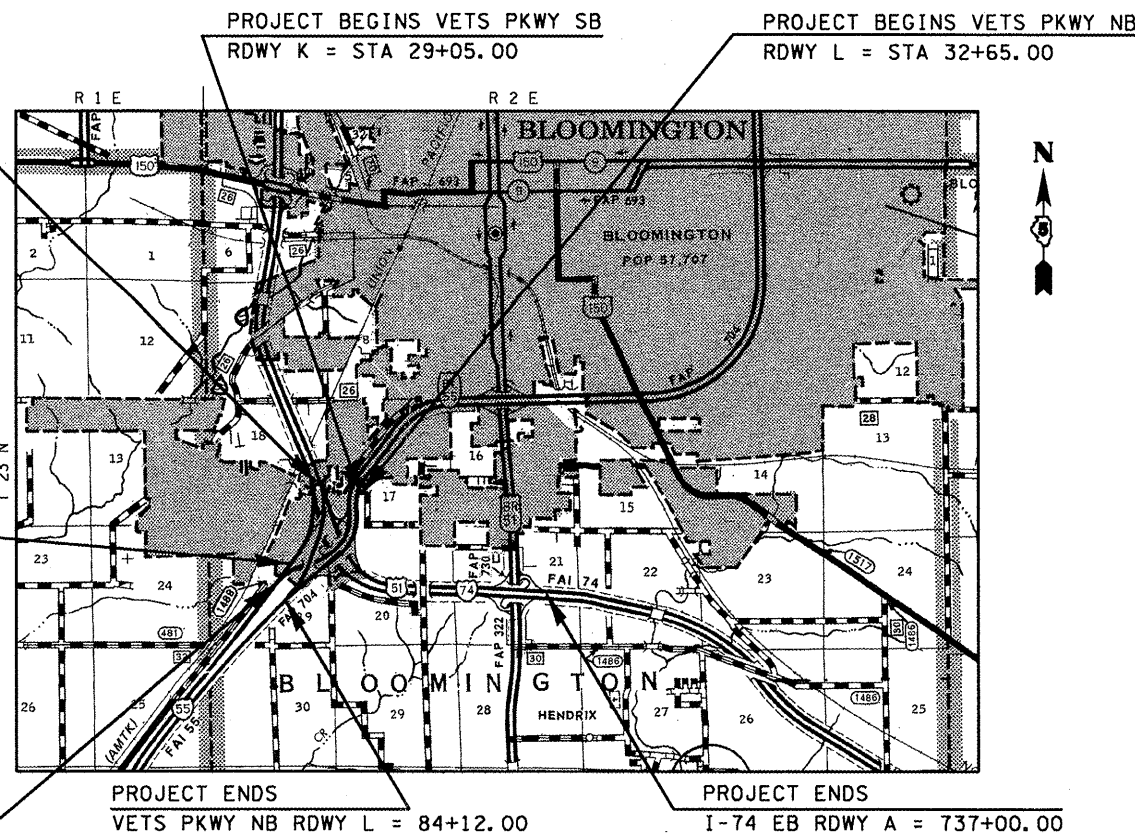
**DESIGN DESIGNATION**  
INTERSTATE



FULL SIZE PLANS HAVE BEEN PREPARED USING STANDARD ENGINEERING SCALES. REDUCED SIZED PLANS WILL NOT CONFORM TO STANDARD SCALES. IN MAKING MEASUREMENTS ON REDUCED PLANS, THE ABOVE SCALES MAY BE USED.

J.U.L.I.E.  
JOINT UTILITY LOCATION INFORMATION FOR EXCAVATION  
1-800-892-0123  
OR 811 (BLOOMINGTON TOWNSHIP)

PROJECT ENGINEER: KEVIN TRAPP  
SQUAD LEADER: JEFF SHERER  
PHONE: (217)465-4181  
CONTRACT NO. 70505



TOTAL LENGTH OF SECTION & PROJECT = 22607.000 FEET = 4.299 MILES (RDWY A, G, L)  
NET LENGTH OF SECTION & PROJECT = 22,402.890 FEET = 4.243 MILES (RDWY A, G, L)

STATE OF ILLINOIS  
DEPARTMENT OF TRANSPORTATION  
DIVISION OF HIGHWAYS

SUBMITTED 2/3 20 09  
*Joseph W. Rowson*  
DEPUTY DIRECTOR OF HIGHWAYS, REGION THREE ENGINEER

March 13, 20 09  
*Charles J. Ingersoll*  
ENGINEER OF DESIGN AND ENVIRONMENT

March 13, 20 09  
*Christine M. Reed*  
DIRECTOR OF HIGHWAYS, CHIEF ENGINEER

**PRINTED BY THE AUTHORITY  
OF THE STATE OF ILLINOIS**