

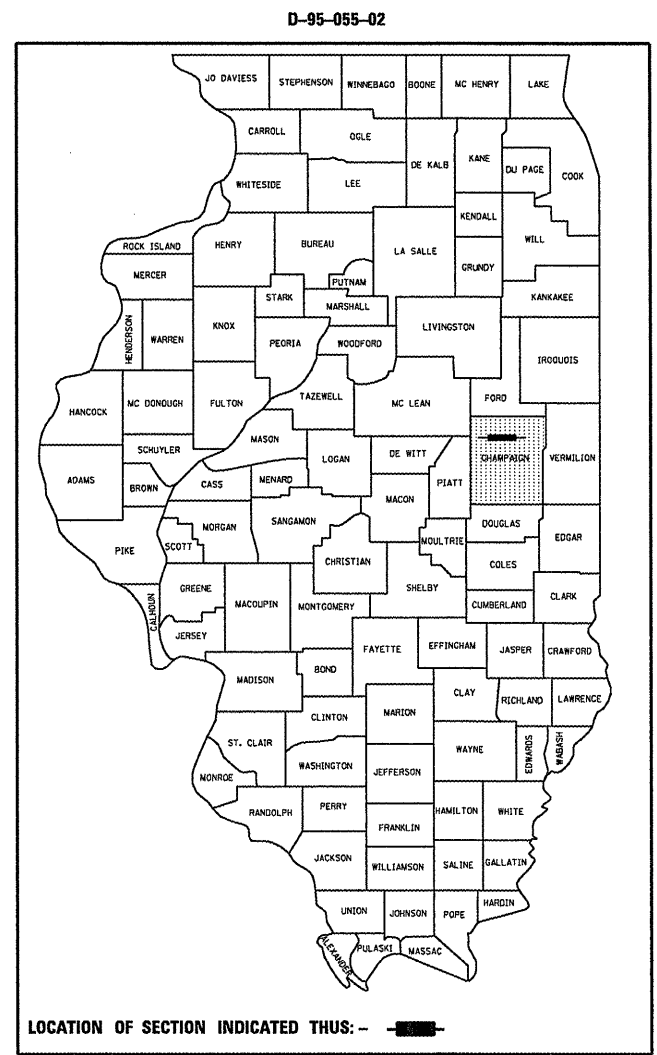
F.A.P. RTE.	SECTION	COUNTY	TOTAL SHEETS	SHEET NO.
709	105RS-2	Champaign	19	1
		ILLINOIS	CONTRACT NO. 70261	

STATE OF ILLINOIS
DEPARTMENT OF TRANSPORTATION
DIVISION OF HIGHWAYS

PROPOSED HIGHWAY PLANS

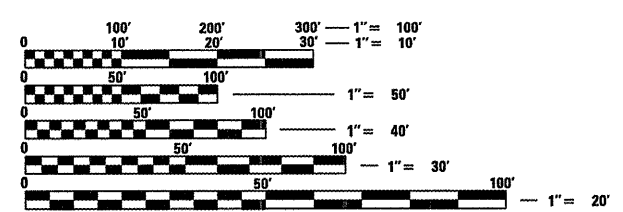
F.A.P. ROUTE 709 (US 136)
SECTION 105RS-2
PROJECT ESP-0709(024)
RESURFACING (3P)
CHAMPAIGN COUNTY
DEWEY-FISHER RD TO S. BRANCH BIG DITCH W. OF RANTOUL
C-95-103-02

FOR INDEX OF SHEETS, SEE SHEET NO. 2
FOR SUMMARY OF QUANTITIES, SEE SHEET NO. 4



CURRENT ADT
LEG "A" = 2,800
LEG "B" = 4,300

DESIGN DESIGNATION
N/A

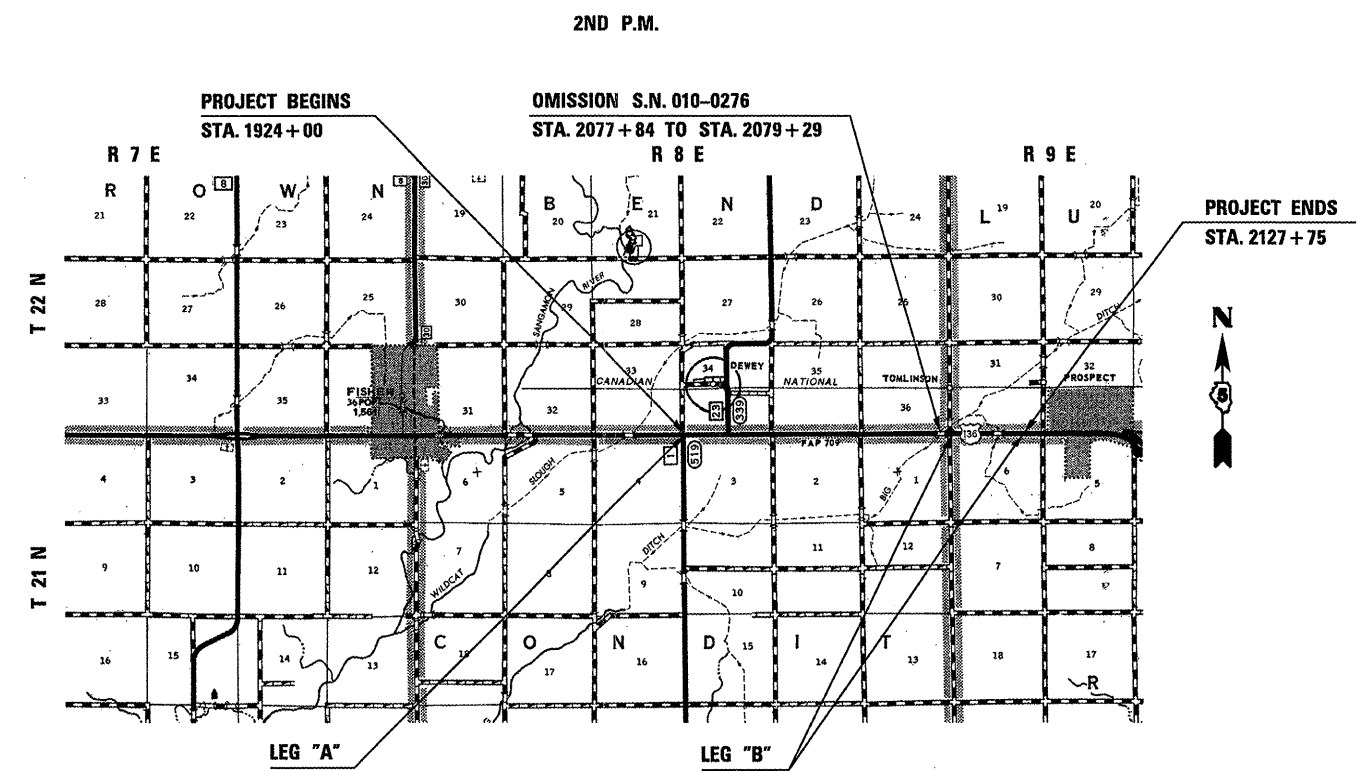


FULL SIZE PLANS HAVE BEEN PREPARED USING STANDARD ENGINEERING SCALES. REDUCED SIZED PLANS WILL NOT CONFORM TO STANDARD SCALES. IN MAKING MEASUREMENTS ON REDUCED PLANS, THE ABOVE SCALES MAY BE USED.

J.U.L.I.E.
JOINT UTILITY LOCATION INFORMATION FOR EXCAVATION
1-800-892-0123
OR 811
EAST BEND TOWNSHIP
CONDIT TOWNSHIP

PROJECT ENGINEER: NANCY FASIG
DESIGNER: WILLIAM PARKER, JR.

CONTRACT NO. 70261



GROSS LENGTH = 20,375.00 FT. = 3.859 MILE
NET LENGTH = 20,233 FT. = 3.830 MILE

STATE OF ILLINOIS
DEPARTMENT OF TRANSPORTATION
DIVISION OF HIGHWAYS

SUBMITTED 2/6 20 09

Joseph E. Houder
DEPUTY DIRECTOR OF HIGHWAYS, REGION ENGINEER

March 13, 20 09
Charles J. Imersole
ENGINEER OF DESIGN AND ENVIRONMENT

March 13, 20 09
Christine M. Reed
DIRECTOR OF HIGHWAYS, CHIEF ENGINEER

PRINTED BY THE AUTHORITY
OF THE STATE OF ILLINOIS