

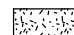



-  PCC SURF. REM., SPECIAL
-  HMA BUTT JOINT
-  INCIDENTAL BIT SURF.
-  HMA SURF. REM., SPECIAL

MATCHLINE STA. 111+00

EXISTING CURVE
 PI STA. = 2001+90.00
 $\Delta = 11^\circ 23' 06.1''$
 R = 503.26'
 T = 190.00'
 L = 363.35'
 E = 34.67'
 P.C. STA. = 2000+00.00
 P.T. STA. = 2003+63.04



SEC. 33, T. 16 N., R. 8 E., 3RD P.M.
 DOUGLAS COUNTY

SEC. 3, T. 15 N., R. 8 E., 3RD P.M.
 DOUGLAS COUNTY

FOR PAVEMENT MARKING DETAIL FOR TURN LANE
 SEE SHEET 50 OF 56

SEE DETAIL OF HMA SURFACE REMOVAL - BUTT JOIN
 ON SHEET 40 OF 56

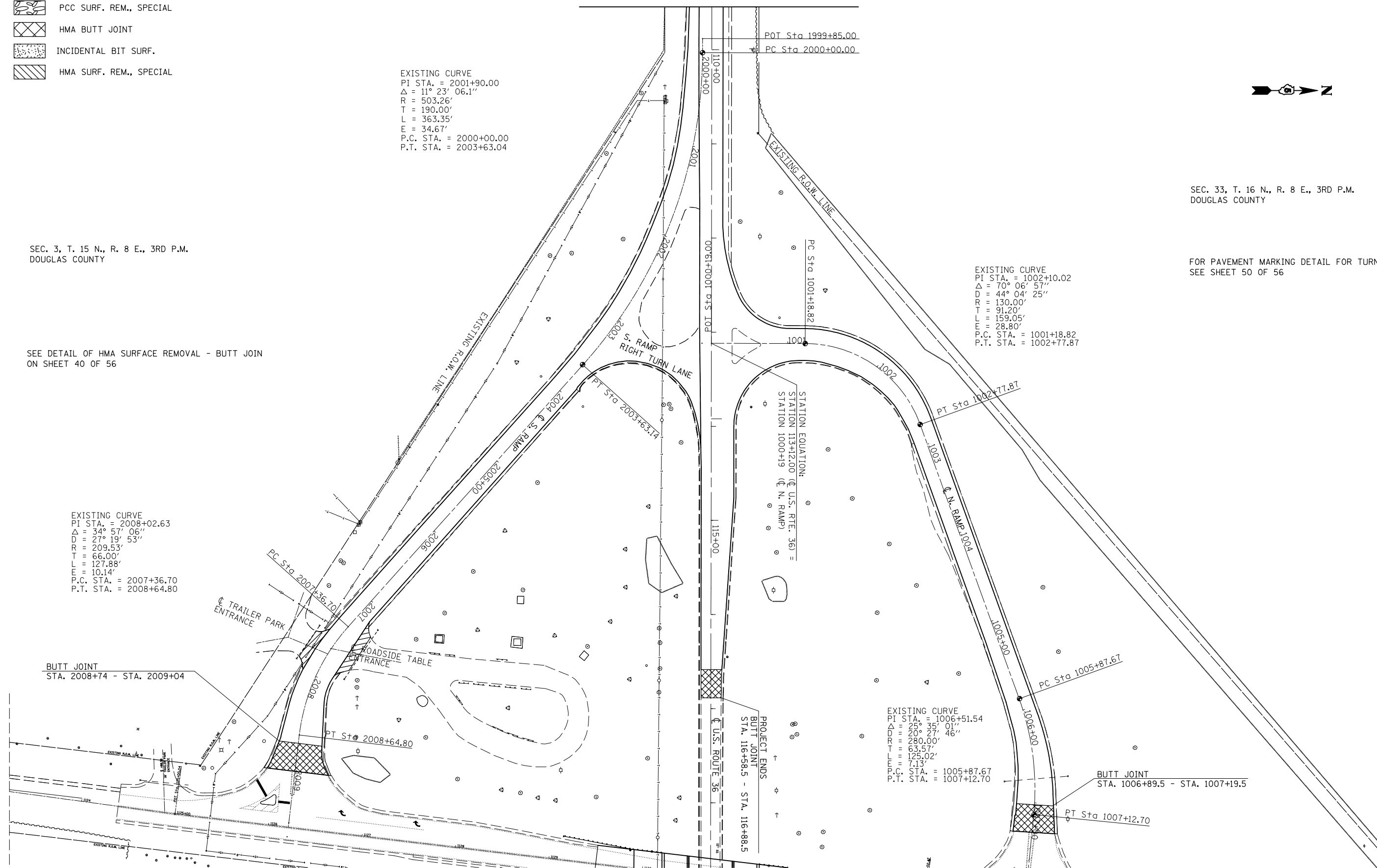
EXISTING CURVE
 PI STA. = 1002+10.02
 $\Delta = 70^\circ 06' 57''$
 D = 44' 04" 25"
 R = 130.00'
 T = 91.20'
 L = 159.05'
 E = 28.80'
 P.C. STA. = 1001+18.82
 P.T. STA. = 1002+77.87

EXISTING CURVE
 PI STA. = 2008+02.63
 $\Delta = 34^\circ 57' 06''$
 D = 27' 19" 53"
 R = 209.53'
 T = 66.00'
 L = 127.88'
 E = 10.14'
 P.C. STA. = 2007+36.70
 P.T. STA. = 2008+64.80

BUTT JOINT
 STA. 2008+74 - STA. 2009+04

EXISTING CURVE
 PI STA. = 1006+51.54
 $\Delta = 25^\circ 35' 01''$
 D = 20' 27" 46"
 R = 280.00'
 T = 63.57'
 L = 125.02'
 E = 7.13'
 P.C. STA. = 1005+87.67
 P.T. STA. = 1007+12.70

BUTT JOINT
 STA. 1006+89.5 - STA. 1007+19.5



FILE NAME =	USER NAME = austinr1	DESIGNED -	REVISED -
ct:\pw_work\p\dot\astinr1\dms86981\70256\plansheets.dgn		DRAWN -	REVISED -
		CHECKED -	REVISED -
		DATE -	REVISED -

**STATE OF ILLINOIS
 DEPARTMENT OF TRANSPORTATION**

US 36 PLAN SHEETS & RAMPS @ US 45

SCALE: SHEET NO. OF SHEETS STA. TO STA.

* (143-R,144)RS-4 ** DOUGLAS & PIATT

F.A.P. RTE.	SECTION	COUNTY	TOTAL SHEETS	SHEET NO.
323	*	**	56	38
FED. ROAD DIST. NO. ILLINOIS FED. AID PROJECT			CONTRACT NO. 70256	