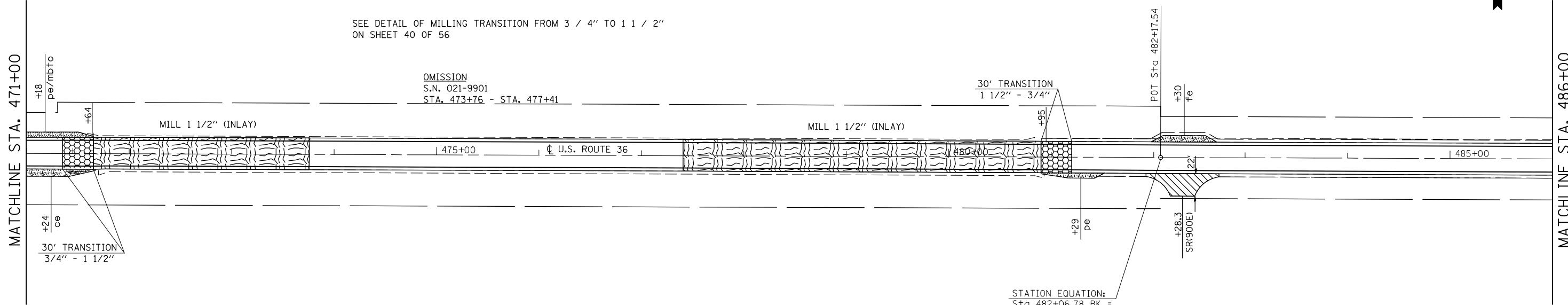


SEC. 33, T. 16 N., R. 8 E., 3RD P.M.
DOUGLAS COUNTY

SEE DETAIL OF MILLING TRANSITION FROM 3 / 4" TO 1 1 / 2"
ON SHEET 40 OF 56



- PCC SURF. REM., SPECIAL
- PCC SURF. REM., SPECIAL
- HMA BUTT JOINT
- INCIDENTAL BIT SURF.
- HMA SURF. REM., SPECIAL

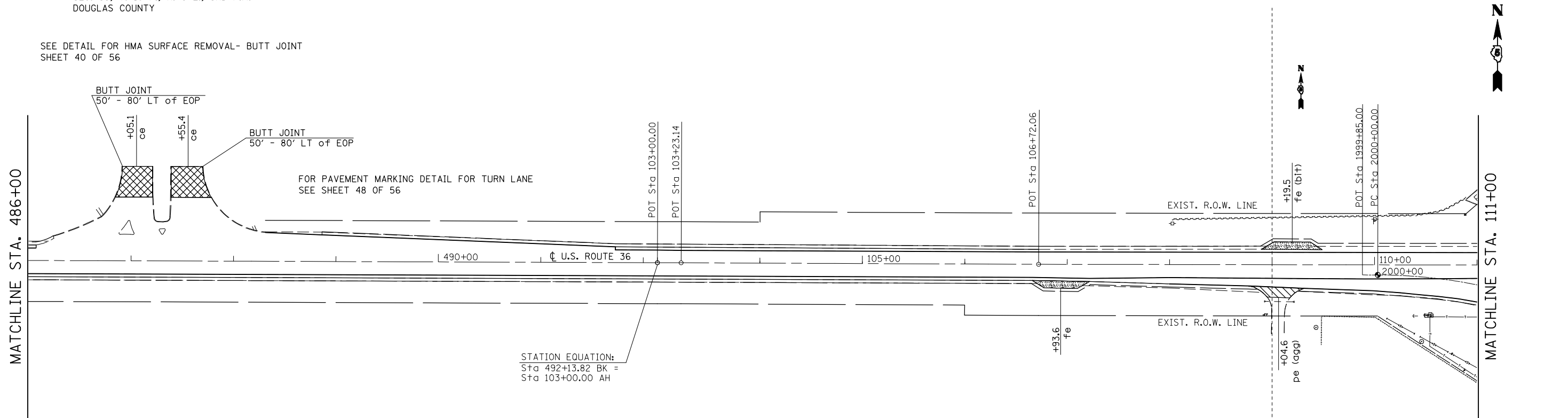
STATION EQUATION:
Sta 482+06.78 BK =
Sta 482+17.54 AH

SEC. 4, T. 15 N., R. 8 E., 3RD P.M.
DOUGLAS COUNTY

SEC. 3, T. 15 N., R. 8 E., 3RD P.M.
DOUGLAS COUNTY

SEC. 33, T. 16 N., R. 8 E., 3RD P.M.
DOUGLAS COUNTY

SEE DETAIL FOR HMA SURFACE REMOVAL- BUTT JOINT
SHEET 40 OF 56



FOR PAVEMENT MARKING DETAIL FOR TURN LANE
SEE SHEET 48 OF 56

STATION EQUATION:
Sta 492+13.82 BK =
Sta 103+00.00 AH

SEC. 3, T. 15 N., R. 8 E., 3RD P.M.
DOUGLAS COUNTY

• (143-R,144)RS-4 ** DOUGLAS & PIATT

FILE NAME =	USER NAME = austinr1	DESIGNED -	REVISED -
ct:\pw\work\PIWIDOT\AUSTINR1\dms86981\70256plansheets.dgn		DRAWN -	REVISED -
	PLOT SCALE = 100.0000' / IN.	CHECKED -	REVISED -
	PLOT DATE = 1/23/2009	DATE -	REVISED -

**STATE OF ILLINOIS
DEPARTMENT OF TRANSPORTATION**

U.S. 36 PLAN SHEETS

SCALE: 50 SHEET NO. OF SHEETS STA. 471+00 TO STA. 111+00

F.A.P. RTE.	SECTION	COUNTY	TOTAL SHEETS	SHEET NO.
323	*	**	56	37
CONTRACT NO. 70256				
FED. ROAD DIST. NO. ILLINOIS FED. AID PROJECT				