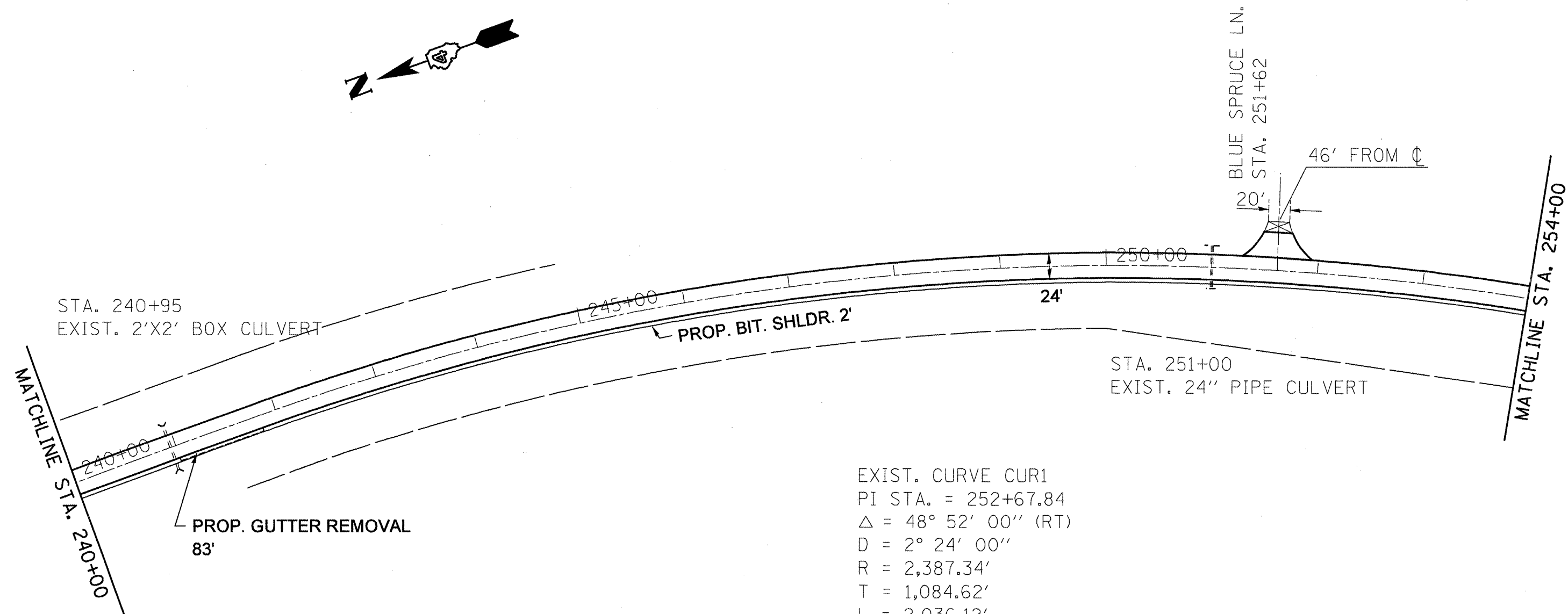
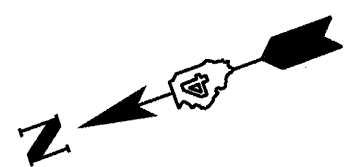


F.A.P. RTE.	SECTION	COUNTY	TOTAL SHEETS	SHEET NO.
22		FULTON	71	43
STA.		TO STA.		
FED. ROAD DIST. NO.		ILLINOIS FED. AID PROJECT		
• 133RS-3;134RS-2;135RS-5				



STA. 240+95
EXIST. 2'X2' BOX CULVERT

PROP. BIT. SHLDR. 2'

STA. 251+00
EXIST. 24" PIPE CULVERT

PROP. GUTTER REMOVAL
83'

EXIST. CURVE CUR1
 PI STA. = 252+67.84
 $\Delta = 48^\circ 52' 00''$ (RT)
 $D = 2^\circ 24' 00''$
 $R = 2,387.34'$
 $T = 1,084.62'$
 $L = 2,036.12'$
 $E = 234.83'$
 $e = \text{-----}$
 $T.R. = \text{-----}$
 $S.E. RUN = \text{-----}$
 $P.C. STA. = 241+83.22$
 $P.T. STA. = 262+19.34$



REVISIONS	
NAME	DATE

ILLINOIS DEPARTMENT OF TRANSPORTATION

PLAN SHEET

SCALE: VERT. _____
 HORIZ. _____

DATE _____

DRAWN BY _____
 CHECKED BY _____

PLOT DATE = 2/19/2009
 FILE NAME = 060610.dwg
 USER NAME = mskm060