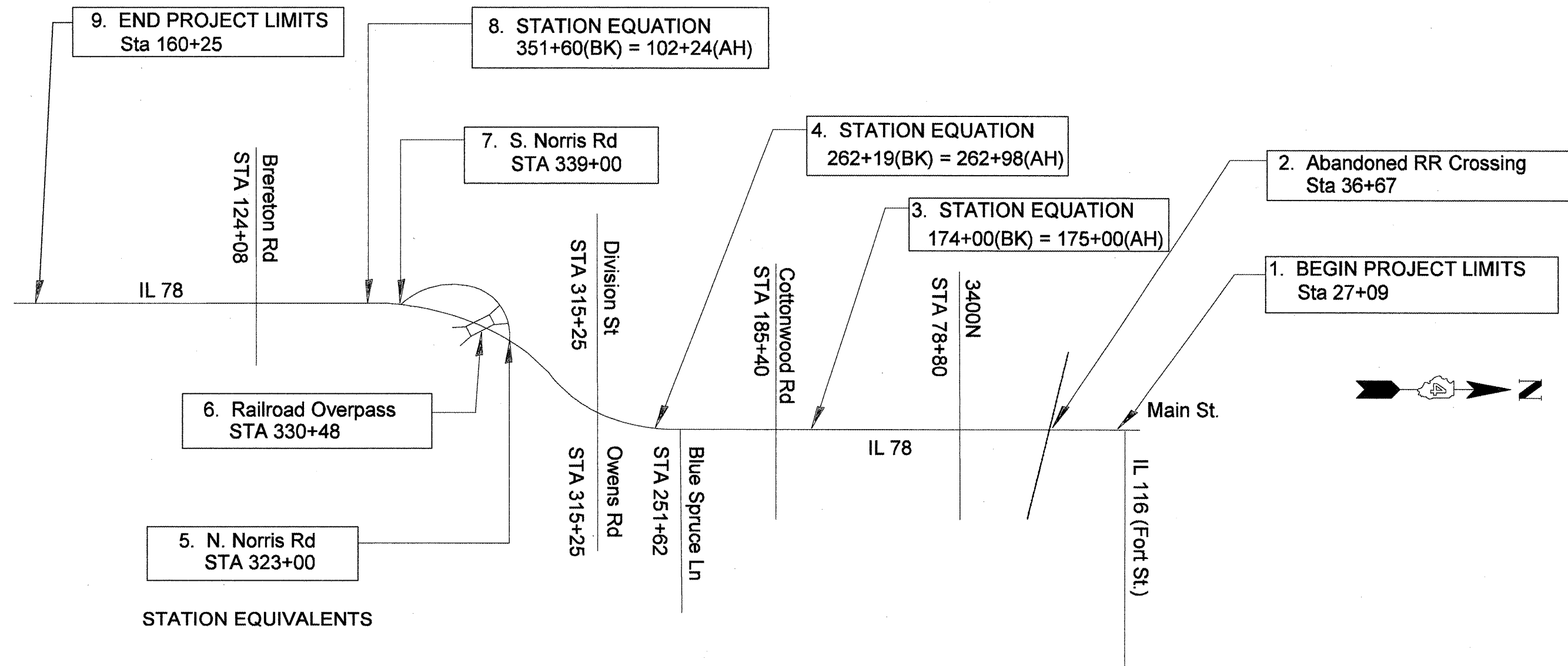


F.A.P. RTE.	SECTION	COUNTY	TOTAL SHEETS	SHEET NO.
22	*	FULTON	71	25
STA.		TO STA.		
FED. ROAD DIST. NO.		ILLINOIS	FED. AID PROJECT	
* 133RS-3;134RS-2;135RS-5				



STATION EQUIVALENTS

1. Begin Project Sta. 50+809(METRIC) = Sta 27+09(ENG)
2. Abandoned RR Crossing Sta. 50+520(METRIC) = Sta 36+37(ENG)
3. Station Equation - Sta. 174+00(BK) = Sta. 175+00(AH) (ENG)
4. Station Equation - Sta. 262+19(BK) = Sta. 262+98(AH) (ENG)
5. N. Norris Rd. Sta 41+958(METRIC) = Sta 323+00(ENG)
6. RR OVERPASS Sta 41+733(METRIC) = Sta 330+48(ENG)
7. S. Norris Rd. Sta. 41+476(METRIC) = Sta 339+00(ENG)
8. Station Equation - Sta. 351+60(BK) = Sta. 102+24(AH) (ENG)
9. End Project Sta. 39+467(METRIC) = Sta 160+25(ENG)

REVISIONS	
NAME	DATE

ILLINOIS DEPARTMENT OF TRANSPORTATION

LINE DIAGRAM

SCALE: VERT. \_\_\_\_\_  
 HORIZ. \_\_\_\_\_  
 DATE \_\_\_\_\_

DRAWN BY \_\_\_\_\_  
 CHECKED BY \_\_\_\_\_