

STATE OF ILLINOIS
DEPARTMENT OF TRANSPORTATION
DIVISION OF HIGHWAYS

PROPOSED
HIGHWAY PLANS

FAP ROUTE 653 (IL 18)
SECTION (1,105)RS-3
PROJECT ESP-0653(028)
3P MILLING AND RESURFACING
PUTNAM & LASALLE COUNTIES

C-93-060-09

FROM EAST OF IL 89 TO EAST OF IL 251

F.A.P. RTE.	SECTION	COUNTY	TOTAL SHEETS	SHEET NO.
653	(1,105)RS-3	ILLINOIS	12	1

• PUTNAM / LASALLE

D-93-036-09



RURAL MINOR ARTERIAL
 2009 ADT = 3,200
 P.V. = 85%
 S.U. = 4%
 M.U. = 11%

STATE OF ILLINOIS
 DEPARTMENT OF TRANSPORTATION
 DIVISION OF HIGHWAYS

SUBMITTED 215 2009

 DEPUTY DIRECTOR OF HIGHWAYS, REGION ENGINEER
March 13, 20 09

 ENGINEER OF DESIGN AND ENVIRONMENT
March 13, 20 09

 DIRECTOR OF HIGHWAYS, CHIEF ENGINEER

PRINTED BY THE AUTHORITY
OF THE STATE OF ILLINOIS

INDEX OF SHEETS

1	COVER SHEET
2	GENERAL NOTES
3	SUMMARY OF QUANTITIES
4	TYPICAL SECTIONS
5-7	SCHEDULES
8	SURVEY TIES
9	PROJECT LAYOUT
10-12	DETAILS

STANDARDS

000001-05	STANDARD SYMBOLS, ABBREVIATIONS AND PATTERNS
001006	DECIMAL OF AN INCH AND OF A FOOT
202001-01	EARTH MEDIAN DITCH CHECK
280001-04	TEMPORARY EROSION CONTROL SYSTEMS
635006-03	REFLECTOR AND TERMINAL MARKER PLACEMENT
635011-02	REFLECTOR MARKER AND MOUNTING DETAILS
642001-01	SHOULDER RUMBLE STRIPS
667101-01	PERMANENT SURVEY MARKERS
701001-02	OFF-ROAD OPERATIONS 2L, 2W, MORE THAN 15' (4.5 m) AWAY
701006-03	OFF-ROAD OPERATIONS 2L, 2W, 15' (4.5 m) TO 24" (600 mm) FROM PAVEMENT EDGE
701011-02	OFF-ROAD MOVING OPERATIONS 2L, 2W, DAY ONLY
701301-03	LANE CLOSURE, 2L, 2W, SHORT TIME OPERATIONS
701306-02	LANE CLOSURE, 2L, 2W, SLOW MOVING OPERATIONS DAY ONLY, FOR SPEEDS GREATER THAN OR EQUAL TO 45 MPH
701311-03	LANE CLOSURE, 2L, 2W, MOVING OPERATIONS - DAY ONLY
701901-01	TRAFFIC CONTROL DEVICES
720011-02	METAL POSTS FOR SIGNS, MARKERS AND DELINEATORS
780001-02	TYPICAL PAVEMENT MARKINGS
781001-03	TYPICAL APPLICATIONS RAISED REFLECTIVE PAVEMENT MARKERS

STA EQUATIONS:

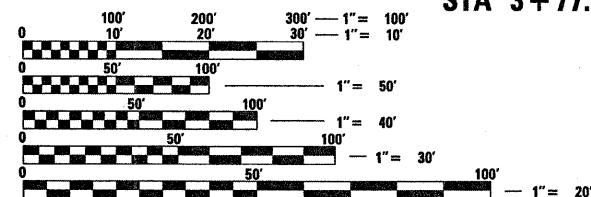
140 + 02 BK = 140 + 00 AH
154 + 98 BK = 154 + 96 AH

SN 050-2033
STA 159 + 36.5

RESURFACING OMISSION
STA 332 + 15 TO 363 + 70

BEGIN IMPROVEMENT
STA 3 + 77.3

END IMPROVEMENT
STA 377 + 09



FULL SIZE PLANS HAVE BEEN PREPARED USING STANDARD ENGINEERING SCALES. REDUCED SIZED PLANS WILL NOT CONFORM TO STANDARD SCALES. IN MAKING MEASUREMENTS ON REDUCED PLANS, THE ABOVE SCALES MAY BE USED.

J.U.L.I.E.
 JOINT UTILITY LOCATION INFORMATION FOR EXCAVATION
 1-800-892-0123
 OR 811

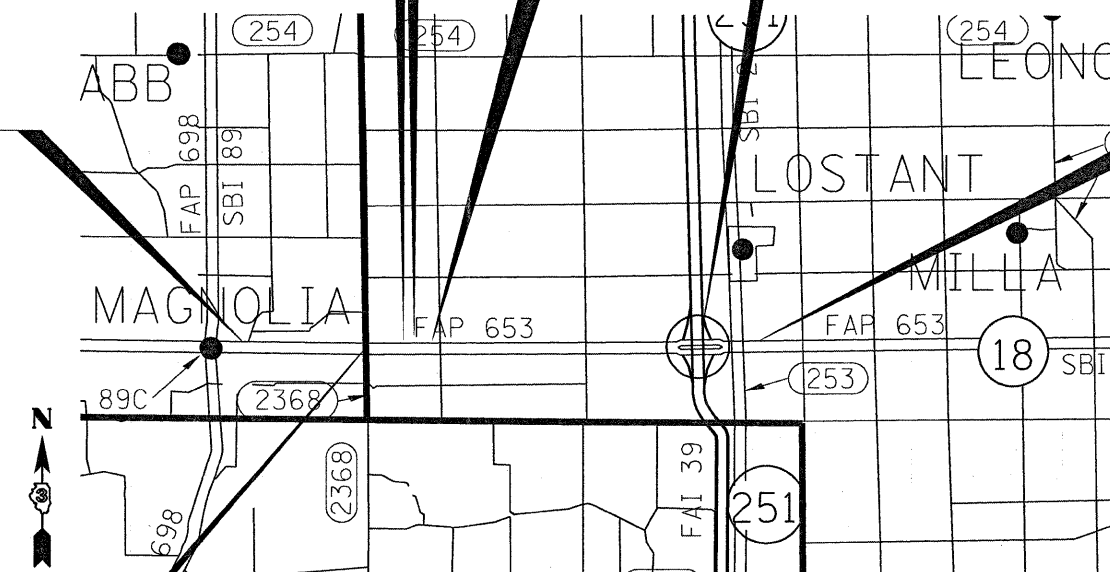
PROJECT ENGINEER: JOE KANNEL
UNIT CHIEF: MICHELE LINDEMANN

CONTRACT NO. 66925

PUTNAM /LASALLE
COUNTY LINE
STA 108 + 14

LOCATION MAP
 NOT TO SCALE

GROSS LENGTH = 37335.7 FT. = 7.071 MILE
 NET LENGTH = 34180.7 FT. = 6.474 MILE



GENERAL NOTES

THE THICKNESS OF HMA SHOWN ON THE PLANS IS THE NOMINAL THICKNESS. DEVIATIONS FROM THE NOMINAL THICKNESS WILL BE PERMITTED WHEN SUCH DEVIATIONS OCCUR DUE TO IRREGULARITIES IN THE EXISTING SURFACE OR BASE ON WHICH THE HMA IS PLACED.

THE HMA SURFACE OF ALL MAILBOX TURNOUTS, PRIVATE ENTRANCES, COMMERCIAL ENTRANCES, AND SIDE ROADS SHALL BE MADE NEATLY, IN A WORKMANLIKE MANNER, AND SHALL ACCURATELY CONFORM TO THE SHAPES AND DIMENSIONS SHOWN ON THE PLAN DETAILS. IF REQUIRED BY THE ENGINEER, THE CONTRACTOR SHALL BE REQUIRED TO SAW CUT THE HMA SURFACE TO CONFORM TO THE SHAPES AND DIMENSIONS SHOWN ON THE PLAN DETAILS. THIS WORK SHALL BE INCLUDED IN THE COST OF THE HMA SURFACE

EXCEPT AS NOTED ON THE PLANS, PAVEMENT GRADES SHOWN ARE AT THE TOP OF PAVEMENT SURFACES.

THE ENGINEER WILL BE THE SOLE JUDGE CONCERNING CURING TIME FOR THE VARIOUS HMA LIFTS.

FOR STABILIZATION, ALL TYPE III BARRICADES SHALL REQUIRE A MINIMUM OF FOUR SAND BAGS PER BARRICADE.

SEEDING SHALL NOT BE PERMITTED AT ANY TIME WHEN THE GROUND IS FROZEN, WET, OR IN AN UNTILLABLE CONDITION. LOCATIONS TO BE SEEDED WILL BE DETERMINED BY THE ENGINEER.

THE FINISHED EARTHWORK SHALL HAVE A VEGETATION SUSTAINING SOIL COVERING THE TOP FOUR INCHES IN AREAS TO BE SEEDED OR SODDED. THE VEGETATION SUSTAINING SOIL REQUIRED WILL NOT BE PAID FOR SEPARATELY BUT SHALL BE INCLUDED IN THE COST OF FURNISHED EXCAVATION.

ON EXISTING PAVEMENT WHICH MAY BE SUPERELEVATED, THE NEW HMA PAVEMENT SHALL BE BUILT WITH THE SAME SUPERELEVATION UNLESS NEW SUPERELEVATION RATES ARE GIVEN ON THE PLANS.

ALL ELEVATIONS REFERRING TO U.S.G.S. MEAN SEA LEVEL DATUM.

ANY REFERENCE TO A STANDARD IN THESE PLANS SHALL BE INTERPRETED TO MEAN THE EDITION AS INDICATED BY THE SUBNUMBER SHOWN IN THE LIST OF STANDARDS INCLUDED IN THESE PLANS.

THE FOLLOWING RATES OF APPLICATION HAVE BEEN USED IN CALCULATING PLAN QUANTITIES:

GRANULAR MATERIALS	2.05	TONS / CU YD
BITUMINOUS MATERIALS (PRIME COAT)	0.08	GAL / SQ YD
FOR ADDITIONAL HMA LIFTS "FOG COAT"	0.05	GAL / SQ YD
AGGREGATE PRIME COAT	0.002	TONS / SQ YD
HMA RESURFACING	112	LBS / SQ YD / IN
SHORT TERM PAVEMENT MARKING	10	FT /100 FT OF APPLICATION
MIX FOR CRACKS, JTS & FLGWYS	0.0003	TONS / SQ YD
LEVEL BINDER (HAND METHOD)	0.0005	TONS / SQ YD

THE CONTRACTOR SHALL CONTACT JULIE AT LEAST 48 HOURS PRIOR TO EXCAVATION TO DETERMINE WHICH UTILITIES ARE IN THE AREA.

STATE OF ILLINOIS
DEPARTMENT OF TRANSPORTATION
DISTRICT THREE

PREPARED BY: [Signature]
DISTRICT STUDIES & PLANS ENGINEER

DATE: 2-5-09

EXAMINED BY: [Signature]
DISTRICT CONSTRUCTION ENGINEER

Wayne L. Phillips
DISTRICT MATERIALS ENGINEER

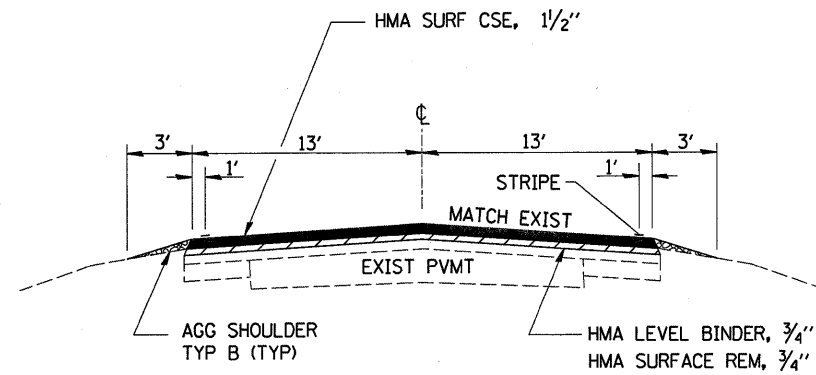
[Signature]
DISTRICT OPERATIONS ENGINEER

FILE NAME =	USER NAME = carpenterdj	DESIGNED -	REVISED -	STATE OF ILLINOIS DEPARTMENT OF TRANSPORTATION	GENERAL NOTES	F.A.P. RTE.	SECTION	COUNTY	TOTAL SHEETS	SHEET NO.
c:\pwork\pwork\carpenterdj\d0116115\d66925-shr-cover.dgn	DRAWN -	REVISED -	653			(1,105)RS-3		12	2	
PLOT SCALE = 50.0000' / IN.	CHECKED -	REVISED -	CONTRACT NO. 66925							
PLOT DATE = Feb 05, 2009 - 01:52:02 PM	DATE -	REVISED -	SCALE:			SHEET NO. OF SHEETS	STA. TO STA.	FED. ROAD DIST. NO.	(ILLINOIS) FED. AID PROJECT	

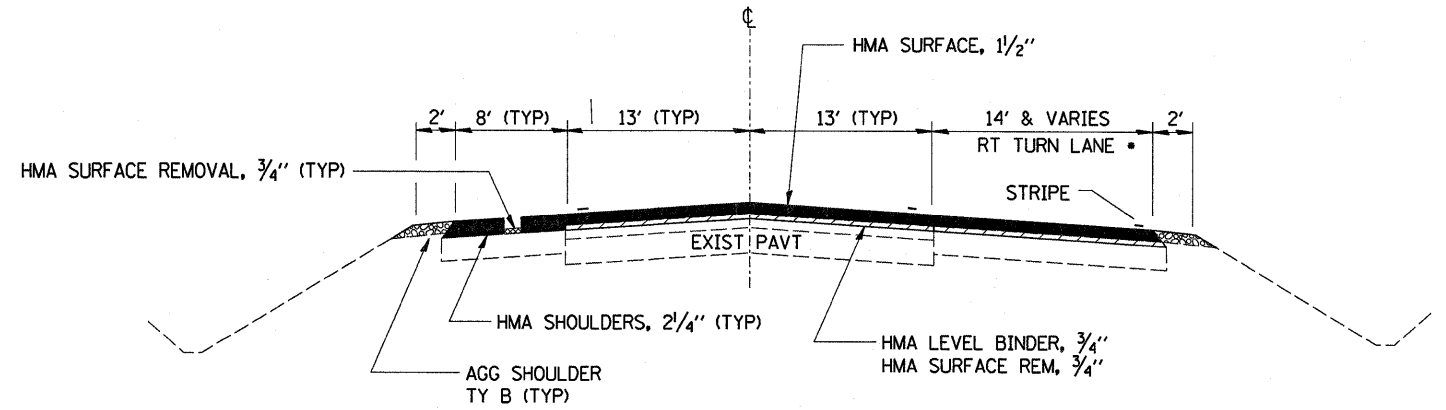
SUMMARY OF QUANTITIES					100% FEDERAL	
CODE NO.	CONSTRUCTION CODE TYPE:		TOTAL QUANTITY	1000		
	ITEM	UNIT		PUTNAM COUNTY	LASALLE COUNTY	
20400800	FURNISHED EXCAVATION	CU YD	17	8	9	
25000200	SEEDING, CLASS 2	ACRE	0.11	0.05	0.06	
25000400	NITROGEN FERTILIZER NUTRIENT	POUND	10	5	5	
25000500	PHOSPHORUS FERTILIZER NUTRIENT	POUND	10	5	5	
25000600	POTASSIUM FERTILIZER NUTRIENT	POUND	10	5	5	
25100630	EROSION CONTROL BLANKET	SQ YD	572	260	312	
40600100	BITUMINOUS MATERIALS (PRIME COAT)	GALLON	21084	6551	14533	
40600300	AGGREGATE (PRIME COAT)	TON	402	125	277	
40600400	MIXTURE FOR CRACKS, JOINTS, AND FLANGEWAYS	TON	30	9	21	
40600525	LEVELING BINDER (HAND METHOD), N50	TON	50	15	35	
40600625	LEVELING BINDER (MACHINE METHOD), N50	TON	4213	1288	2925	
40600895	CONSTRUCTING TEST STRIP	EACH	1	0.3	0.7	
40600982	HOT-MIX ASPHALT SURFACE REMOVAL - BUTT JOINT	SQ YD	1387	495	892	
40600990	TEMPORARY RAMP	SQ YD	270	104	166	
40603310	HOT-MIX ASPHALT SURFACE COURSE, MIX "C", N50	TON	8426	2575	5851	
40800050	INCIDENTAL HOT-MIX ASPHALT SURFACING	TON	265	114	151	
44000152	HOT-MIX ASPHALT SURFACE REMOVAL, 3/4"	SQ YD	103279	30964	72315	
48101200	AGGREGATE SHOULDERS, TYPE B	TON	1905	604	1301	
48203100	HOT-MIX ASPHALT SHOULDERS	TON	229	0	229	
67000400	ENGINEER'S FIELD OFFICE, TYPE A	CAL MO	1	0.3	0.7	

SUMMARY OF QUANTITIES (CONTINUED)					100% FEDERAL	
CODE NO.	CONSTRUCTION CODE TYPE:		TOTAL QUANTITY	1000		
	ITEM	UNIT		PUTNAM COUNTY	LASALLE COUNTY	
66700205	PERMANENT SURVEY MARKERS, TYPE I	EACH	6	1	5	
67100100	MOBILIZATION	L SUM	1	0.3	0.7	
70100460	TRAFFIC CONTROL AND PROTECTION, STANDARD 701306	L SUM	1	0.3	0.7	
70300100	SHORT-TERM PAVEMENT MARKING	FOOT	14250	3183	11067	
70300610	TEMPORARY PAINT PAVEMENT MARKING, LETTERS AND SYMBOLS	SQ FT	46.8	0	46.8	
70300625	TEMPORARY PAINT PAVEMENT MARKING LINE 4"	FOOT	101639	28401	73238	
70300635	TEMPORARY PAINT PAVEMENT MARKING LINE 6"	FOOT	10607	2566	8041	
70300640	TEMPORARY PAINT PAVEMENT MARKING LINE 8"	FOOT	304	0	304	
70300645	TEMPORARY PAINT PAVEMENT MARKING LINE 12"	FOOT	136	0	136	
70300660	TEMPORARY PAINT PAVEMENT MARKING LINE 24"	FOOT	70	0	70	
70301000	WORK ZONE PAVEMENT MARKING REMOVAL	SQ FT	1583	354	1229	
78100100	RAISED REFLECTIVE PAVEMENT MARKER	EACH	552	133	419	
78200300	PRISMATIC CURB REFLECTOR	EACH	62	0	62	
78300200	RAISED REFLECTIVE PAVEMENT MARKER REMOVAL	EACH	552	133	419	
X7800600	URETHANE PAVEMENT MARKING - LETTERS & SYMBOLS, SPECIAL	SQ FT	140.4	0	140.4	
X7800610	URETHANE PAVEMENT MARKING - LINE 4"	FOOT	111977	28401	83576	
X7800630	URETHANE PAVEMENT MARKING - LINE 6"	FOOT	13436	2566	10870	
X7800640	URETHANE PAVEMENT MARKING - LINE 8"	FOOT	1418	0	1418	
X7800650	URETHANE PAVEMENT MARKING - LINE 12"	FOOT	304	0	304	
X7800680	URETHANE PAVEMENT MARKING - LINE 24"	FOOT	136	0	136	
Z0055300	RUMBLE STRIP	EACH	3	3	0	

▪ SPECIALTY ITEMS



TYPICAL SECTION
STA 3+77.3 TO STA 328+81
STA 373+08 TO STA 377+09



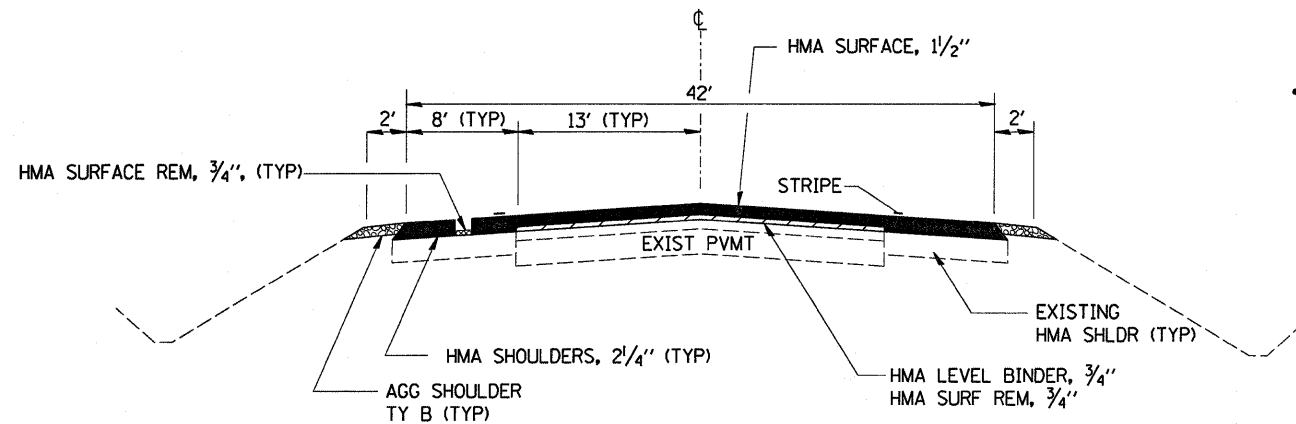
TYPICAL SECTION
STA 368+08 TO STA 373+08

• RT TURN LANE VARIES FROM 0' TO 14'
 STA 368+08 TO STA 369+51

MIX DESIGN						
MIX	PG GRADE	MAX % RAP ALLOWABLE	DESIGN AIR VOIDS	MIX COMPOSITION	FRICTION AGG	DENSITY CONTROL
HOT-MIX ASPHALT SURFACE COURSE	PG 64-22	15%	4.0% @N50	IL 12.5 OR IL 9.5	MIXTURE C	CORRELATION
LEVELING BINDER	PG 64-22	25%	4.0% @N50	IL 9.5		SATISFACTION OF ENGINEER

• MATERIAL SHALL BE COMPACTED TO 93.0-97.4 PERCENT OF THE MAXIMUM THEORETICAL DENSITY, EXCEPT THAT WHEN PLACED AS A FIRST LIFT ON UNIMPROVED SUBGRADE THE MINIMUM PERCENT COMPACTION SHALL BE 92.0 PERCENT. THE MAXIMUM THEORETICAL DENSITY SHALL BE DETERMINED FROM THE MOVING AVERAGE AS SPECIFIED IN THE QC/QA SPECIFICATION.

••WHEN MORE THAN 20% RAP IS USED, A SOFTER ASPHALT BINDER (PG58-22) MAY BE REQUIRED AS DETERMINED BY THE ENGINEER.



TYPICAL SECTION
STA 328+81 TO STA 332+15
STA 363+70 TO STA 368+08

PAVING OMISSION FROM
 STA 332+15 TO 363+70

FILE NAME =	USER NAME = carpenterdj	DESIGNED -	REVISED -	STATE OF ILLINOIS DEPARTMENT OF TRANSPORTATION	DETAILS	F.A.P. RTE.	SECTION	COUNTY	TOTAL SHEETS	SHEET NO.
c:\pwork\pwsdot\carpenterdj\d0116115\d66925-sht-typicals.DGN	DRAWN -	REVISED -	653			(1,105)RS-3	PUTNAM/LASALLE	12	4	
PLOT SCALE = 50.0000' / IN.	CHECKED -	REVISED -	CONTRACT NO. 66925							
PLOT DATE = Feb 05, 2009 - 01:45:35 PM	DATE -	REVISED -	FED. ROAD DIST. NO. ILLINOIS FED. AID PROJECT							
SCALE: SHEET NO. OF SHEETS STA. TO STA.										

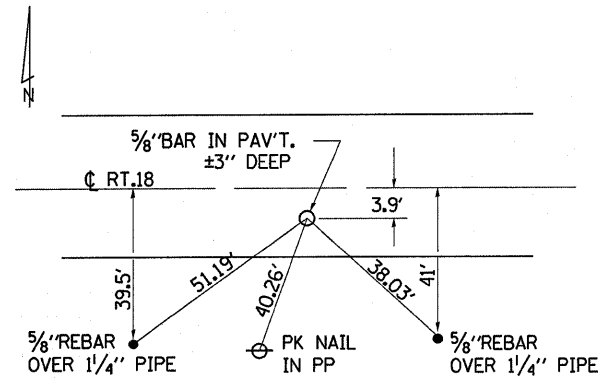
RESURFACING SCHEDULE														
LOCATION		LENGTH	PVMT AREA	HMA SURF CSE	LEVEL BINDER (MM)	HMA SURF REM 3/4"	HMA SURF REM (BUTT JT)	TEMP RAMP	BIT MAT (PR CT)	AGG (PR CT)	MIX FOR CRACKS, JOINTS & FLGWYS	LEVEL BINDER (HM)	HMA SHLD	AGG SHLD
STA TO STA		FOOT	SQ YD	TON	TON	SQ YD	SQ YD	SQ YD	GALLON	TON	TON	TON	TON	TON
PUTNAM COUNTY														
3+17.3 TO 377.3	BUTT JOINT	60	173.3	14.6	7.3	86.7	86.7	14.4	36	0.7	0.1	0.1		3.4
3+77.3 TO 109+28.5		10551.2	30481.2	2560.4	1280.2	30481.2			6401	121.9	9.1	15.2		600.8
SUBTOTAL				2575.0	1287.5	30567.9	86.7	14.4	6437	122.6	9.2	15.3	0.0	604.2
LASALLE COUNTY														
109+28.5 TO 140+02 BK		3073.5	8879.0	745.8	372.9	8879.0			1865	35.5	2.7	4.4		175
140+00 AH TO 154+98 BK		1498	4993.3	419.4	209.7	4993.3			1049	20.0	1.5	2.5		85.3
154+96 AH TO 328+81		17385	50325.6	4227.4	2113.7	50325.6			10568	201.3	15.1	25.2		990
328+81 TO 331+55		274	791.6	66.5	33.2	1278.7			166	3.2	0.2	0.4	61.4	10.4
331+55 TO 332+15	BUTT JOINT	60	173.3	14.6	7.3	140.0	140.0	14.4	36	0.7	0.1	0.1	13.4	2.3
332+15 TO 363+70	PAVING OMISSION	3155												
363+70 TO 364+30	BUTT JOINT	60	173.3	14.6	7.3	140.0	140.0	14.4	36	0.7	0.1	0.1	13.4	2.3
364+30 TO 368+08		378	1092.0	91.7	45.9	1764.0			229	4.4	0.3	0.9	84.7	14.4
368+08 TO 373+08		500	1888.7	158.7	79.3	2333.3			397	7.6	0.6	1.2	56.0	19
373+08 TO 377+09		401	1158.4	97.3	48.7	1871.3								
377+09 TO 377+69	BUTT JOINT	60	173.3	14.6	7.3	86.7	86.7	14.4	36	0.7	0.1	0.1		2.3
SUBTOTAL				5850.6	2925.3	71811.9	366.7	43.2	14382	274.1	20.7	34.9	228.9	1301.0
TOTAL				8425.6	4212.8	102379.8	453.4	57.6	20819	396.7	29.9	50.2	228.9	1905.2

PAVEMENT MARKING SCHEDULE											
LOCATION	LENGTH	URETHANE PVMT MARK-LINE 4"		URETHANE PVMT MARK-LINE 6"	URETHANE PVMT MARK-LINE 8"	URETHANE PVMT MARK-LINE 12"	URETHANE PVMT MARK-LINE 24"	URETHANE PVMT MARK-LET & SYMB, SPL	PRISMATIC CURB REFLECTORS	RAISED REFLECT PVMT MARK REMOVAL	RAISED REFLECT PVMT MARK
		WHITE	YELLOW	YELLOW	WHITE	WHITE	WHITE	WHITE	SQ FT	EACH	EACH
STA TO STA	FOOT	FOOT	FOOT	FOOT	FOOT	FOOT	FOOT				
PUTNAM COUNTY											
3+17.3 TO 109+28.5	10611.2	21222		2566						133	133
NO PASSING ZONE:											
9+22 TO 21+23 EBL			1201								
18+44 TO 25+56 WBL			712								
41+44 TO 51+80 EBL			1036								
51+80 TO 58+99 WBL			719								
68+18 TO 77+56 EBL			938								
78+22 TO 86+29 WBL			807								
92+91 TO 101+71 EBL			880								
100+43 TO 109+28.5 WBL			886								
PUTNAM SUBTOTAL		21222	7179	2566	0	0	0	0	0	133	133
LASALLE COUNTY											
109+28.5 TO 140+02 BK	3073.5	6147		768						38	38
140+00 AH TO 154+98 BK	1498	2996		375						19	19
154+96 AH TO 328+81	17385	34770		4346						217	217
328+81 TO 330+00	10119	20238		2530						126	126
330+00 TO 373+08	4308	8127	7145	170	1086	152	68	140.4	46	13	13
373+08 TO 377+69	461	922	20	115	332	152	68		16	5.8	5.8
LASALLE SUBTOTAL		73200	10376	8304	1418	304	136	140.4	62	419	419
PROJECT TOTAL		47455.7	111977	10870	1418	304	136	140.4	62	552	552

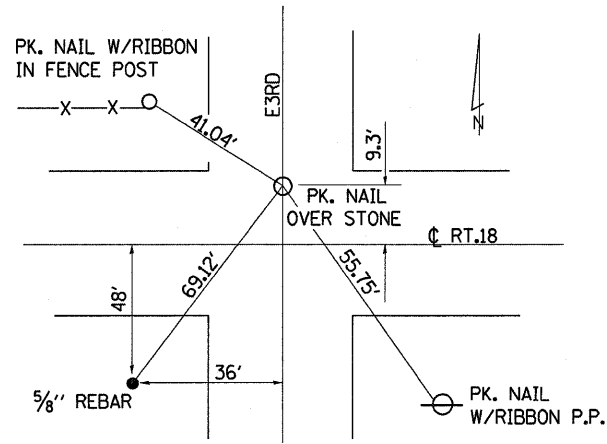
TEMPORARY PAVEMENT MARKING SCHEDULE										
LOCATION STA TO STA	LENGTH FOOT	TEMPORARY PVMT MARK- LINE 4"		TEMPORARY PVMT MARK- LINE 6"	TEMPORARY PVMT MARK- LINE 8"	TEMPORARY PVMT MARK- LINE 12"	TEMPORARY PVMT MARK- LINE 24"	TEMPORARY PVMT MARK- LET & SYMB	SHORT TERM PVMT MARK	WORK ZONE PVMT MARK REM
		WHITE FOOT	YELLOW FOOT	YELLOW FOOT	WHITE FOOT	WHITE FOOT	WHITE FOOT	WHITE SQ FT	FOOT	SQ FT
PUTNAM COUNTY										
3+17.3 TO 109+28.5	10611.2	21222		2566					3183	354
NO PASSING ZONE:										
9+22 TO 21+23 EBL			1201							
18+44 TO 25+56 WBL			712							
41+44 TO 51+80 EBL			1036							
51+80 TO 58+99 WBL			719							
68+18 TO 77+56 EBL			938							
78+22 TO 86+29 WBL			807							
92+91 TO 101+71 EBL			880							
100+43 TO 109+28.5 WBL			886							
PUTNAM SUBTOTAL		21222	7179	2566	0	0	0	0	3183	354
LASALLE COUNTY										
109+28.5 TO 140+02 BK	3073.5	6147		768					921	102
140+00 AH TO 154+98 BK	1498	2996		375					450	50
154+96 AH TO 328+81	17385	34770		4346					5217	580
328+81 TO 330+00	10119	20238		2530					3036	337
330+00 TO 373+08	4308	2354	1800	22	152	68	35	46.8	1305	145
373+08 TO 377+69	461	922	800		152	68	35		138	15
NO PASSING ZONES:										
144+69 TO 152+62 EBL			793							
153+22 TO 161+91 WBL			869							
291+70 TO 299+87 EBL			817							
302+36 TO 309+68 WBL			732							
LASALLE SUBTOTAL		67427	5811	8041	304	136	70	46.8	11067	1229
PROJECT TOTAL	47455.7	101639		10607	304	136	70	46.8	14250	1583

SEEDING SCHEDULE								
LOCATION	SIDE	SEEDING CL 2 ACRE	FURN EXC CU YD	EROSION CONTROL BLANKET SQ YD	NIT FERT NUT LB	PHOS FERT NUT LB	POT FERT NUT LB	
PEORIA STREET	14+37	RT	0.01	1.5	52	0.9	0.9	0.9
CHICAGO STREET	18+96	RT	0.01	1.5	52	0.9	0.9	0.9
MOREL ROAD	20+44	LT	0.01	1.5	52	0.9	0.9	0.9
MERIDIAN ROAD	108+14	LT	0.01	1.5	52	0.9	0.9	0.9
1600E ROAD	108+14	RT	0.01	1.5	52	0.9	0.9	0.9
SUBTOTAL PUTNAM			0.05	7.5	260	4.5	4.5	4.5
LASALLE								
EAST 1ST ROAD	160+89	RT	0.01	1.5	52	0.9	0.9	0.9
EAST 1ST ROAD	160+89	LT	0.01	1.5	52	0.9	0.9	0.9
EAST 3rd ROAD	268+18	RT	0.01	1.5	52	0.9	0.9	0.9
EAST 3rd ROAD	268+18	LT	0.01	1.5	52	0.9	0.9	0.9
US 251	373+08.0	RT	0.01	1.5	52	0.9	0.9	0.9
US 251	373+08.0	LT	0.01	1.5	52	0.9	0.9	0.9
SUBTOTAL LASALLE			0.06	9	312	5.4	5.4	5.4
PROJECT TOTAL			0.11	16.5	572	9.9	9.9	9.9

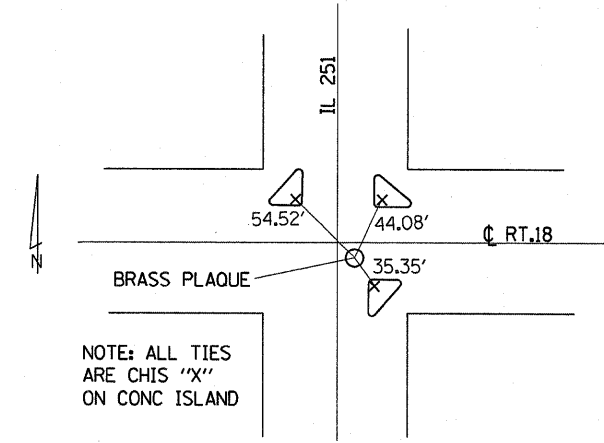
SIDEROAD AND ENTRANCE SCHEDULE											
SIDEROAD OR DESCRIPTION	STA	SIDE	EXIST MAT	WIDTH	AREA	INC HMA SURF	BIT MAT'L (PR CT)	AGG (PR CT)	TEMP RAMP	HMA SURF REM 3/4"	HMA SURF REM BUTT JT
				FOOT	SQ YD	TON	GAL	TON	SQ YD	SQ YD	SQ YD
PUTNAM COUNTY											
PE W/ MBTO	4+49	LT	HMA	12	32.5	2.7	2.6	0.1			5.3
PE W/ MBTO	6+30	LT	HMA	14	38.5	3.2	3.1	0.1			6.2
PE W/ MBTO	8+23	LT	HMA	18	53.7	4.5	4.3	0.1			8.0
PEORIA STREET	14+37	RT	HMA	20	110	13.9	8.8	0.2	11.1	66	44.4
CHICAGO STREET	18+96	RT	HMA	50	210	26.5	16.8	0.4	27.8	99	111.1
MOREL ROAD	20+44	LT	HMA	40	176	22.2	14.1	0.4	22.2	87	88.9
PE	20+44	RT	HMA	20	37.7	3.2	3.0	0.1			8.9
PE	20+80	RT	HMA	30	37.7	3.2	3.0	0.1			13.3
PE	54+53	LT	HMA	15	25.5	2.1	9.6	0.1			6.7
MERIDIAN ROAD	108+14	LT	HMA	26	130	16.4	10.4	0.3	14.4	72	57.8
1600E ROAD	108+14	RT	HMA	26	130	16.4	10.4	0.3	14.4	72	57.8
SUBTOTAL PUTNAM						114.3	86.1	2.2	89.9	396	408.4
LASALLE COUNTY											
PE	135+53	RT	HMA	35	120	10.1	45.0	0.2			15.6
EAST 1ST ROAD (PRISCILLA RD)	160+89	RT	HMA	30	143	18.0	11.4	0.3	16.7	76	66.7
EAST 1ST ROAD (PRISCILLA RD)	160+89	LT	HMA	30	143	18.0	11.4	0.3	16.7	76	66.7
PE W/ MBTO	250+07	LT	HMA	14	52	4.4	4.2	0.1			6.2
EAST 3rd ROAD	268+18	RT	HMA	30	143	18.0	11.4	0.3	16.7	76	66.7
EAST 3rd ROAD	268+18	LT	HMA	30	143	18.0	11.4	0.3	16.7	76	66.7
PE W/ MBTO	292+68	LT	HMA	12	68	5.7	5.4	0.1			5.3
PE	303+81	RT	HMA	20	30	2.5	2.4	0.1			8.9
MBTO	304+40	LT	HMA		38	3.2	3.0	0.1			
US 251	373+08.0	RT	HMA	50	210	26.5	16.8	0.4	27.8	99	111.1
US 251	373+08.0	LT	HMA	50	210	26.5	16.8	0.4	27.8	99	111.1
SUBTOTAL LASALLE						150.9	139.2	2.6	122.4	503	525.0
PROJECT TOTAL						265.2	225.3	4.8	212.3	899	933.4



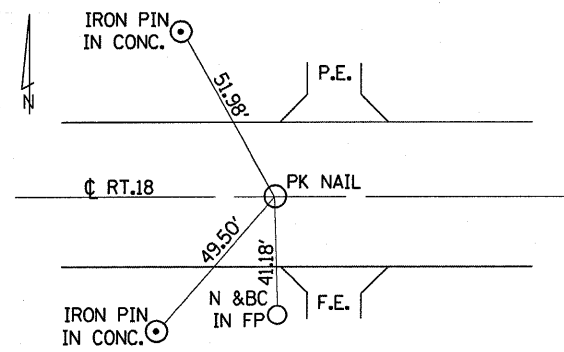
S.W. CORNER SEC. 26
STA. 320 + 63
 REPLACE W/ PSM, TY. 1
 LASALLE COUNTY



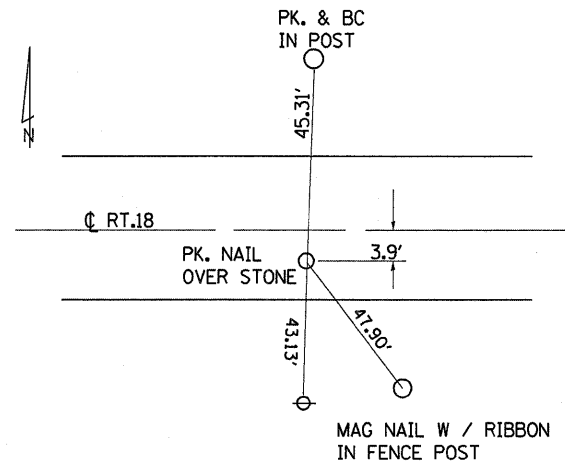
S.W. CORNER SEC. 27
STA. 267 + 33.3
 REPLACE W/ PSM, TY. 1
 LASALLE COUNTY



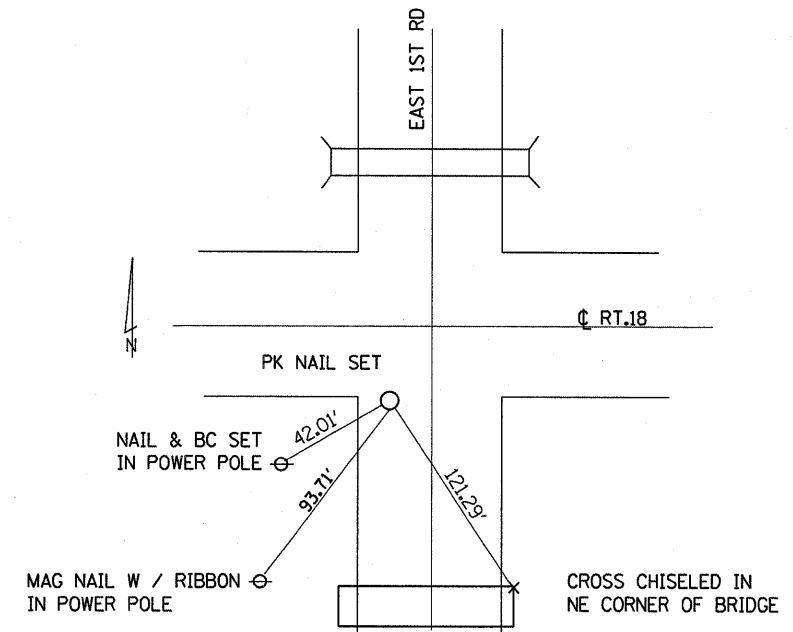
S.E. CORNER SEC. 26
STA. 265 + 75
 REPLACE W/ PSM, TY. 1
 LASALLE COUNTY



N.W. CORNER SEC.36
STA. 54 + 53
 REPLACE W/ PSM, TY. 1
 PUTNAM COUNTY



S.W. CORN. SEC. 28
STA. 213 + 96.2
 REPLACE W/ PSM, TY. 1
 LASALLE COUNTY



N.E. CORNER SEC. 31
 REPLACE W/ PSM, TY. 1
 LASALLE COUNTY

FILE NAME =	USER NAME = carpenterdj	DESIGNED -	REVISED -
c:\pwork\PWIDOT\CARPENTERDJ\d0116115\366925-shd-detail.dgn		DRAWN -	REVISED -
PLDT SCALE = 50.0000' / IN.		CHECKED -	REVISED -
PLDT DATE = Feb 05, 2009 - 01:42:44 PM		DATE -	REVISED -

STATE OF ILLINOIS
 DEPARTMENT OF TRANSPORTATION

TIE POINTS

SCALE: SHEET NO. OF SHEETS STA. TO STA.

F.A.P. RTE.	SECTION	COUNTY	TOTAL SHEETS	SHEET NO.
653	(1,105)RS-3	PUTNAM/LASALLE	12	8
CONTRACT NO. 66925				
FED. ROAD DIST. NO. ILLINOIS FED. AID PROJECT				

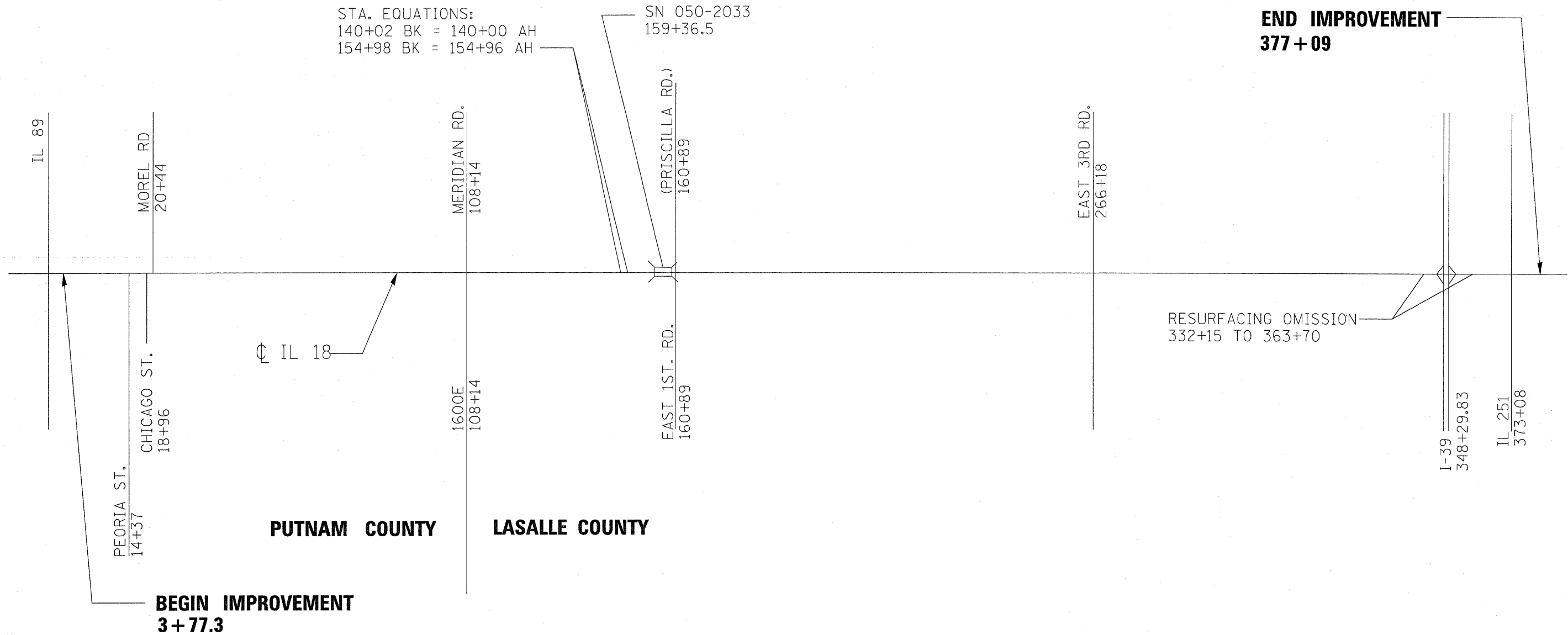


NOT TO SCALE

STA. EQUATIONS:
 140+02 BK = 140+00 AH
 154+98 BK = 154+96 AH

SN 050-2033
 159+36.5

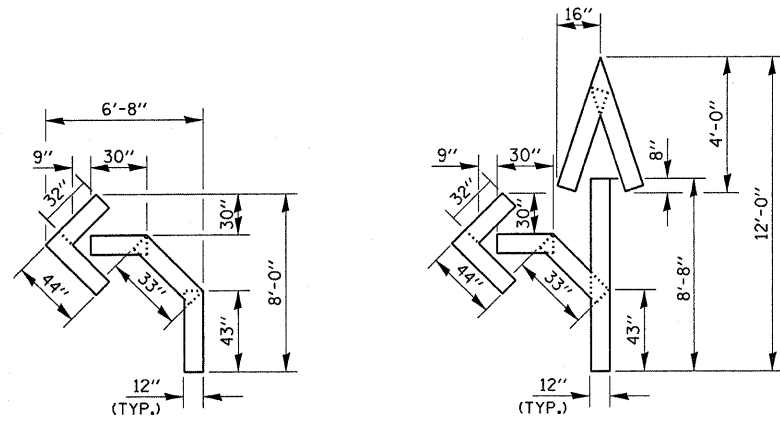
END IMPROVEMENT
377+09



PUTNAM COUNTY **LASALLE COUNTY**

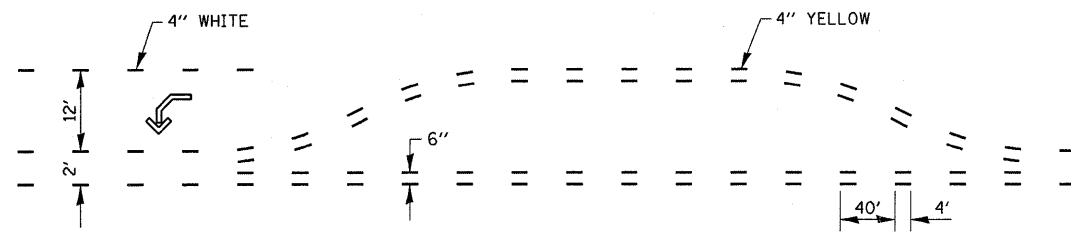
BEGIN IMPROVEMENT
3+77.3

FILE NAME = c:\pw_work\PWIDOT\CARPENTERJ\j0116115\366925-shr-detail.dgn	USER NAME = carpenterdj	DESIGNED -	REVISED -	STATE OF ILLINOIS DEPARTMENT OF TRANSPORTATION	PROJECT LAYOUT				F.A.P. RTE.	SECTION	COUNTY	TOTAL SHEETS	SHEET NO.
	PLOT SCALE = 50.0000' / IN.	CHECKED -	REVISED -						653	(1,105)RS-3	PUTNAM/LASALLE	12	9
	PLOT DATE = Feb 05, 2009 - 01:42:37 PM	DATE -	REVISED -		SCALE: SHEET NO. OF SHEETS STA. TO STA.				FED. ROAD DIST. NO. ILLINOIS FED. AID PROJECT				
									CONTRACT NO. 66925				

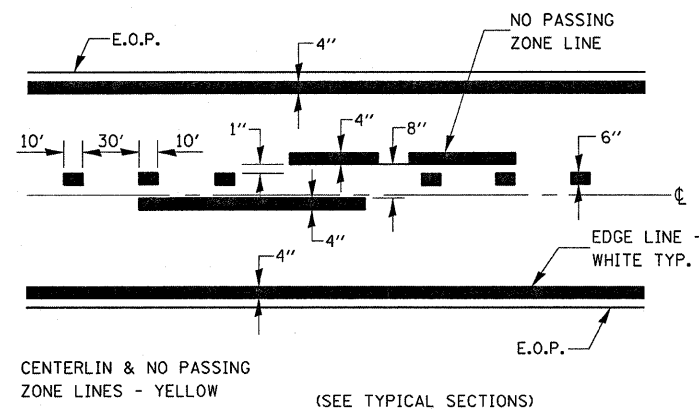


QUANTITY
12" LINE = 16 LIN. FT.
OR 4" LINE = 48 LIN. FT.

QUANTITY
12" LINE = 29 LIN. FT.
OR 4" LINE = 87 LIN. FT.

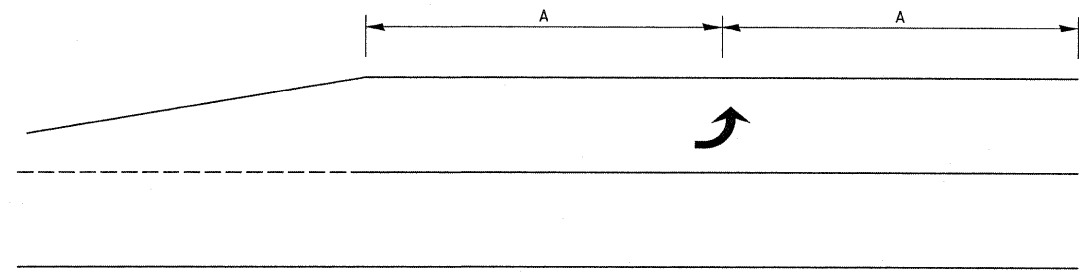


SHORT-TERM PAVEMENT MARKING FOR MEDIANS AND ARROWS

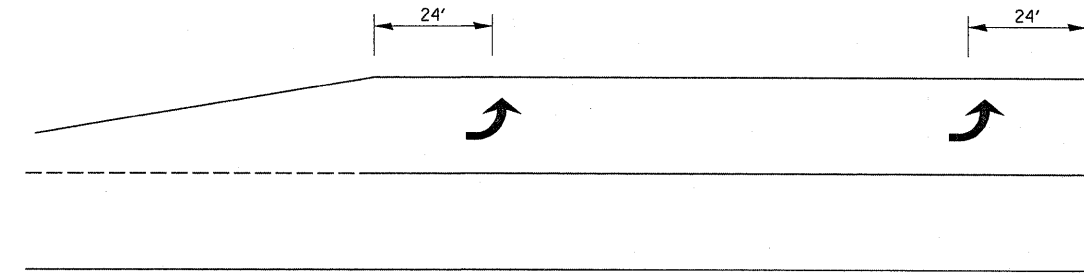


CENTERLINE & NO PASSING
ZONE LINES - YELLOW
(SEE TYPICAL SECTIONS)

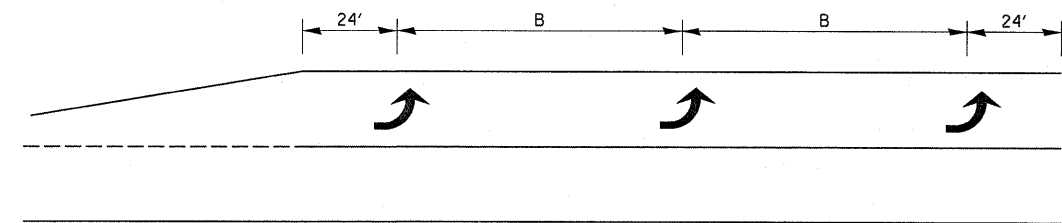
PAVEMENT MARKING



99' AND UNDER



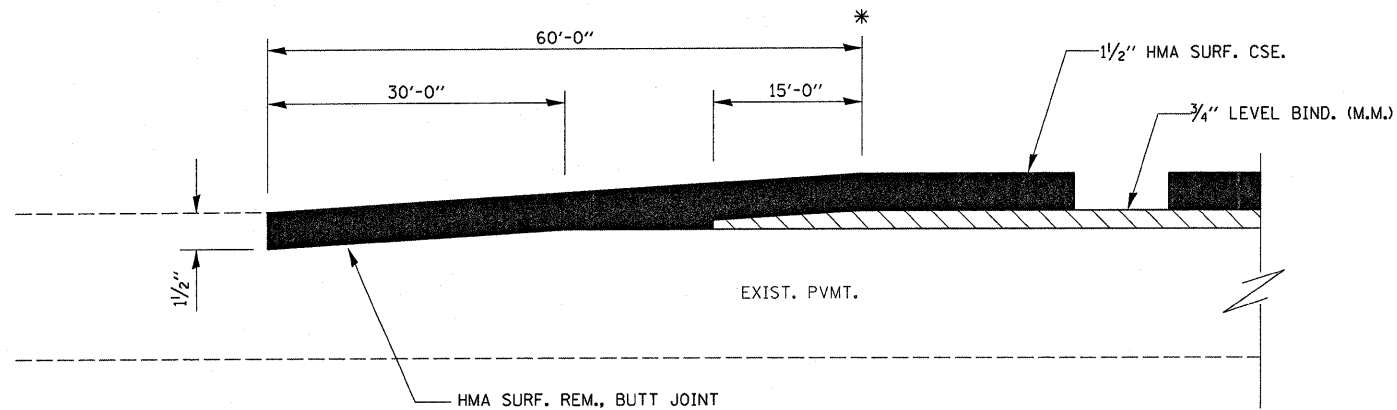
100' TO 149'



150' AND LONGER

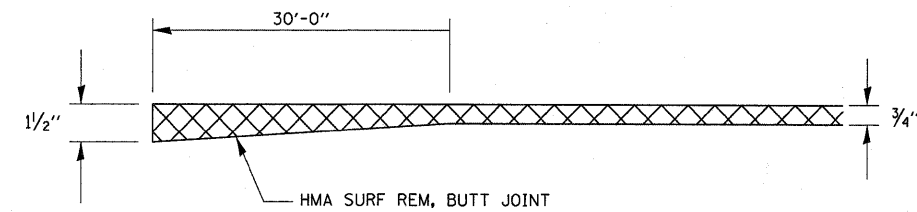
TYPICAL PLACEMENT OF ARROWS IN TURN LANES

FILE NAME =	USER NAME = carpenterd	DESIGNED -	REVISED -	STATE OF ILLINOIS DEPARTMENT OF TRANSPORTATION	DETAILS				F.A.P. RTE.	SECTION	COUNTY	TOTAL SHEETS	SHEET NO.
c:\pwork\PWIDOT\CARPENTERJ\0116115	366925-shr-details.DGN	DRAWN -	REVISED -						653	(1,105)RS-3	PUTNAM/LASALLE	12	10
PLOT SCALE = 50.0000' / IN.	CHECKED -	REVISED -	REVISED -		CONTRACT NO. 66925								
PLOT DATE = Feb 05, 2009 - 01:41:37 PM	DATE -	REVISED -	REVISED -		SCALE:	SHEET NO.	OF	SHEETS	STA.	TO STA.	FED. ROAD DIST. NO.	ILLINOIS FED. AID PROJECT	

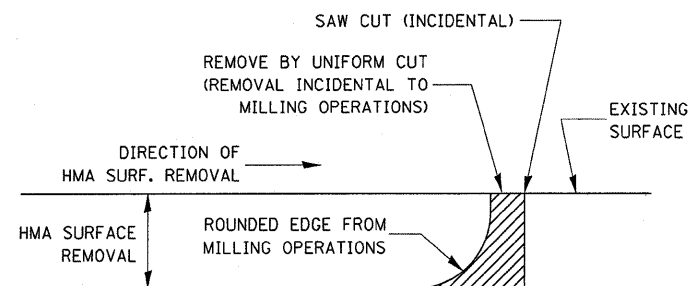


HMA TAPER AT BUTT JOINTS

- * STA. 3+77.3
- * STA. 331+55
- * STA 364+30
- * STA. 377+09

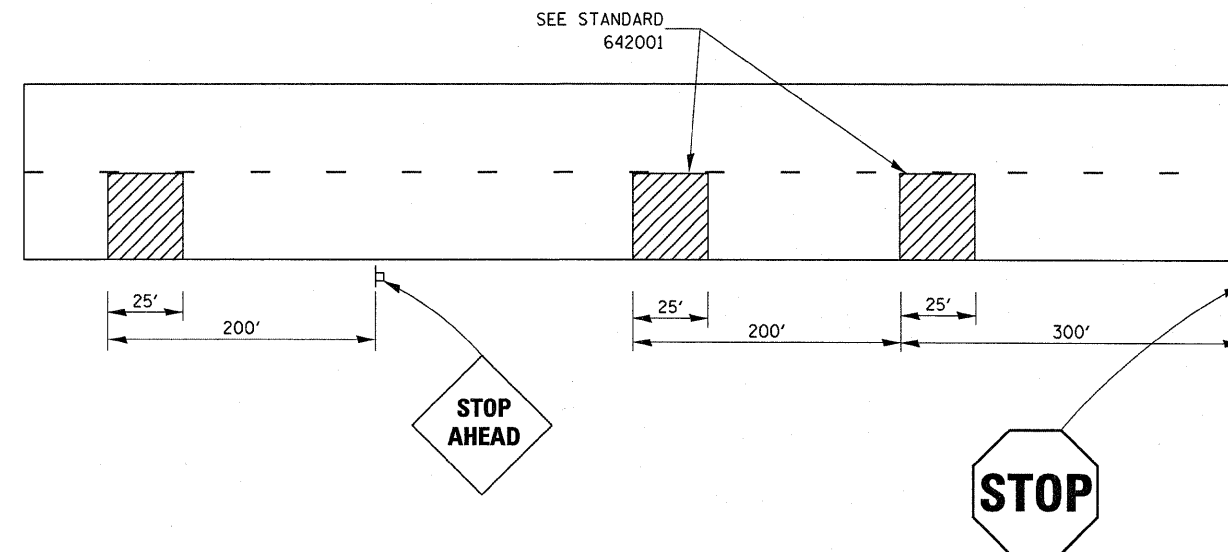


HMA SURFACE REMOVAL - BUTT JOINT



NOTE:
 WHEN MILLING OPERATIONS PRODUCE A ROUNDED EDGE,
 THEN A SAW CUT SHALL BE USED TO MANUFACTURE
 A PERPENDICULAR EDGE AS SHOWN IN THE DETAIL.
 THE ENGINEER SHALL BE THE SOLE JUDGE
 CONCERNING THE USE OF THIS DETAIL

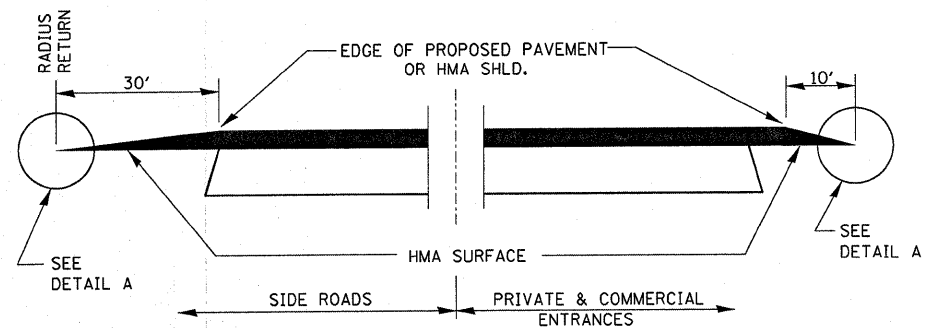
HMA DETAIL AT BUTT JOINTS



TYPICAL GROOVED RUMBLE STRIP APPLICATION IN ADVANCE OF AN INTERSECTION

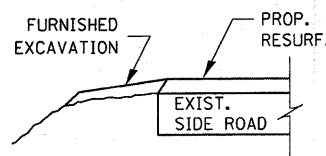
TO BE INSTALLED FOR WESTBOUND TRAFFIC AT IL 89

FILE NAME =	USER NAME = carpenterdj	DESIGNED -	REVISED -	STATE OF ILLINOIS DEPARTMENT OF TRANSPORTATION	DETAILS				F.A.P. RTE.	SECTION	COUNTY	TOTAL SHEETS	SHEET NO.		
c:\pwork\PW1DOT\CARPENTERDJ\d0116115\366925-shr-details.DGN		DRAWN -	REVISED -		SCALE:	SHEET NO.	OF	SHEETS	STA.	TO STA.	653	(1,105)RS-3	PUTNAM/LASALLE	12	11
		CHECKED -	REVISED -						CONTRACT NO. 66925						
		DATE -	REVISED -						FED. ROAD DIST. NO. ILLINOIS FED. AID PROJECT						

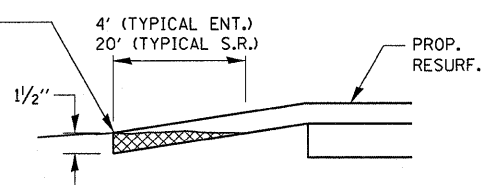


SECTION A-A
DETAILS AT ENTRANCES & SIDE ROADS

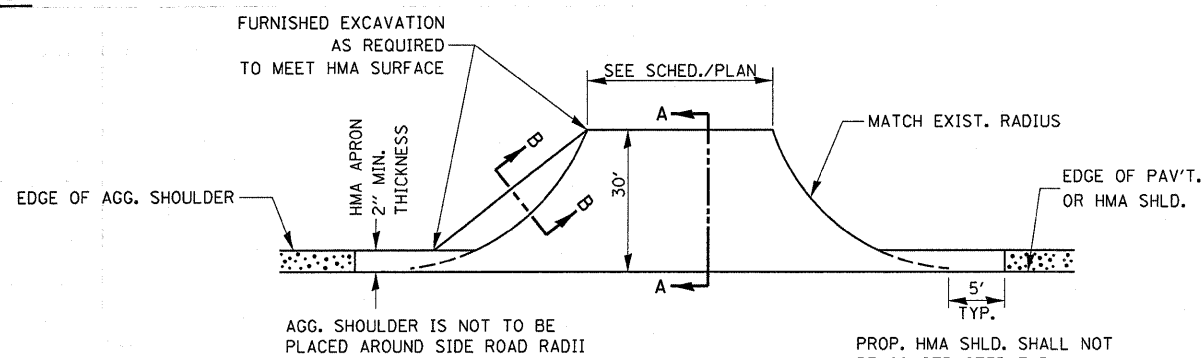
THE COST OF REMOVAL AT EXISTING HMA OR P.C.C. LOCATIONS SHALL BE PAID FOR PER SQ. YD. BY THE APPROPRIATE PAY ITEM. REMOVAL AT THE EXISTING AGG. LOCATIONS SHALL BE INCIDENTAL TO THE HMA. A-3 LOCATIONS SHALL BE FEATHER TAPERED.



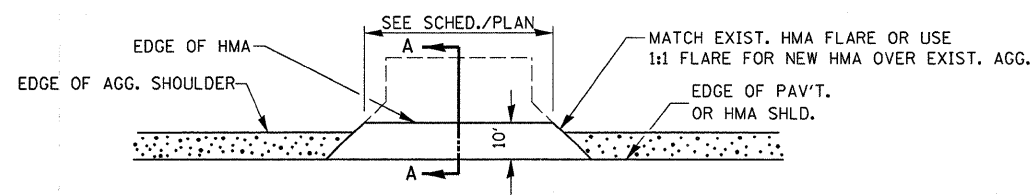
SECTION B-B



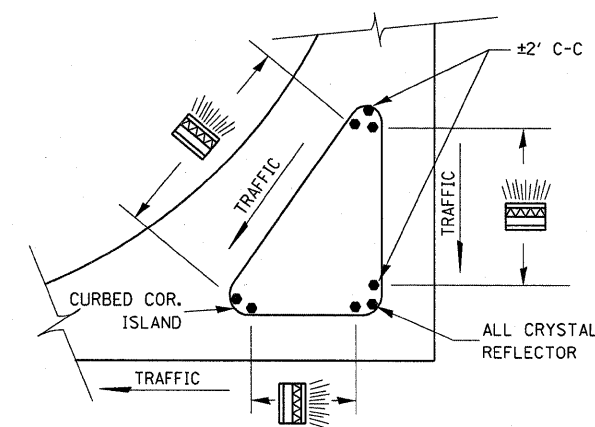
DETAIL A



PLAN AT SIDE ROADS



PLAN AT PRIVATE & COMMERCIAL ENTRANCES



PRISMATIC REFLECTORS

FILE NAME =	USER NAME = carpenterdj	DESIGNED -	REVISED -	STATE OF ILLINOIS DEPARTMENT OF TRANSPORTATION	DETAILS				F.A.P. RTE.	SECTION	COUNTY	TOTAL SHEETS	SHEET NO.
c:\pwork\PW100T\CARPENTERDJ\d0116115	366925-shd-details.DGN	DRAWN -	REVISED -						653	(1,105)RS-3	PUTNAM/LASALLE	12	12
	PLOT SCALE = 50,0000' / IN.	CHECKED -	REVISED -		CONTRACT NO. 66925								
	PLOT DATE = Feb 05, 2009 - 01:41:15 PM	DATE -	REVISED -		SCALE:	SHEET NO.	OF SHEETS	STA.	TO STA.	FED. ROAD DIST. NO.	ILLINOIS FED. AID PROJECT		