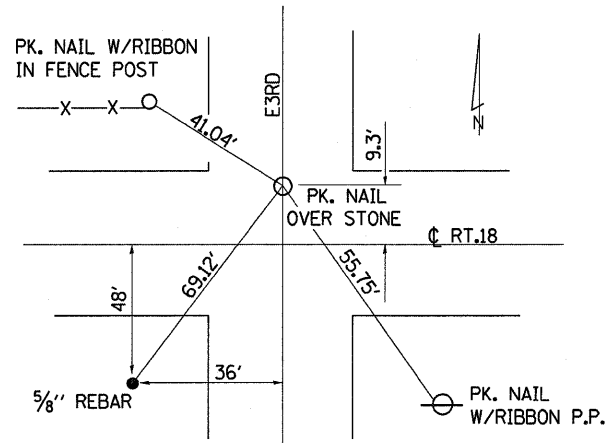
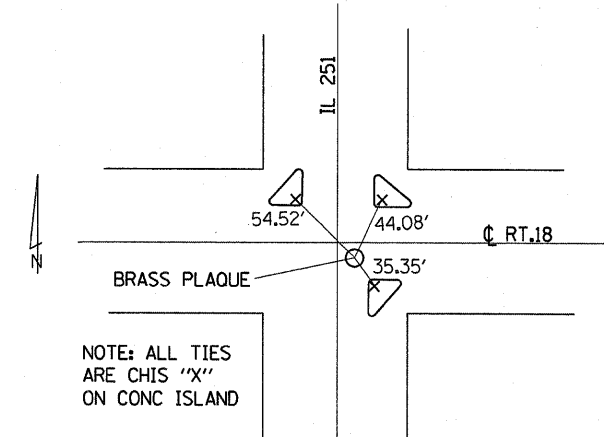


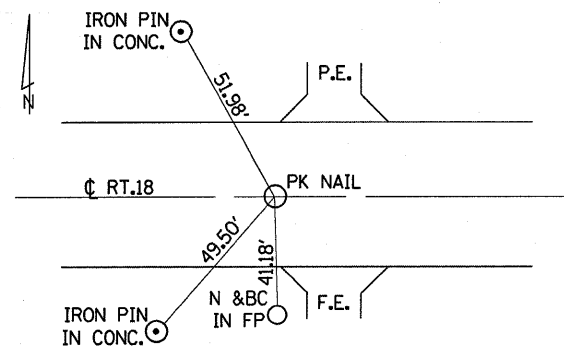
S.W. CORNER SEC. 26
STA. 320 + 63
 REPLACE W/ PSM, TY. 1
 LASALLE COUNTY



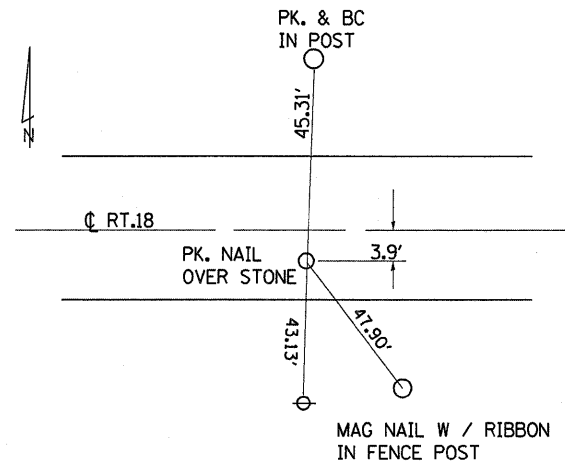
S.W. CORNER SEC. 27
STA. 267 + 33.3
 REPLACE W/ PSM, TY. 1
 LASALLE COUNTY



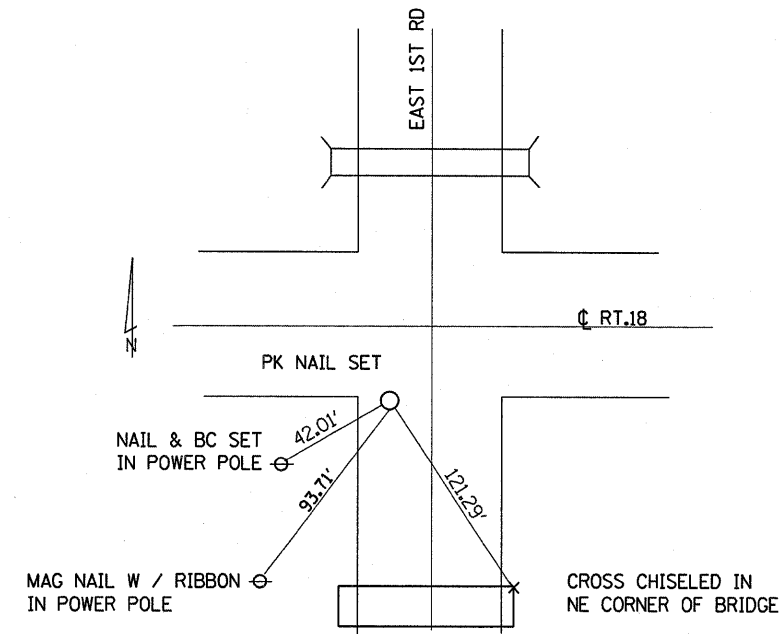
S.E. CORNER SEC. 26
STA. 265 + 75
 REPLACE W/ PSM, TY. 1
 LASALLE COUNTY



N.W. CORNER SEC.36
STA. 54 + 53
 REPLACE W/ PSM, TY. 1
 PUTNAM COUNTY



S.W. CORN. SEC. 28
STA. 213 + 96.2
 REPLACE W/ PSM, TY. 1
 LASALLE COUNTY



N.E. CORNER SEC. 31
 REPLACE W/ PSM, TY. 1
 LASALLE COUNTY

FILE NAME =	USER NAME = carpenterdj	DESIGNED -	REVISED -
c:\pwork\PWIDOT\CARPENTERDJ\d0116115\366925-shd-details.dgn		DRAWN -	REVISED -
PLDT SCALE = 50.0000' / IN.	CHECKED -	REVISED -	REVISED -
PLDT DATE = Feb 05, 2009 - 01:42:44 PM	DATE -	REVISED -	REVISED -

STATE OF ILLINOIS
DEPARTMENT OF TRANSPORTATION

TIE POINTS			
SCALE:	SHEET NO.	OF SHEETS	STA. TO STA.

F.A.P. RTE. 653	SECTION (1,105)RS-3	COUNTY PUTNAM/LASALLE	TOTAL SHEETS 12	SHEET NO. 8
CONTRACT NO. 66925				
FED. ROAD DIST. NO. ILLINOIS FED. AID PROJECT				