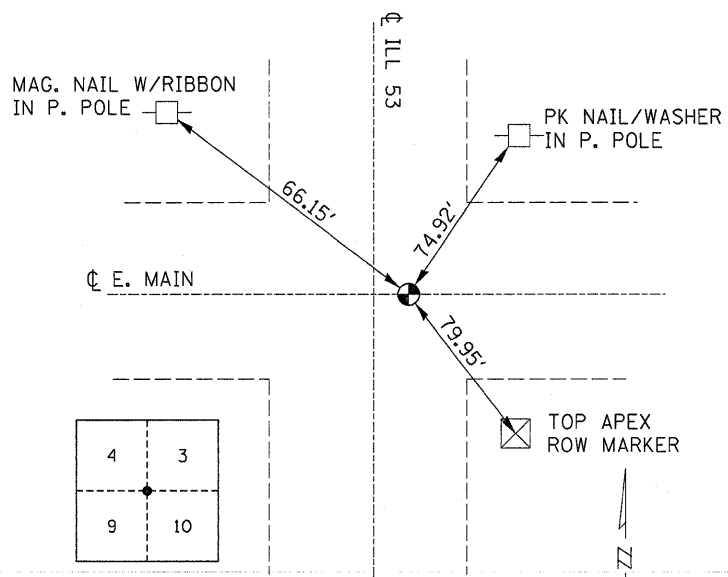


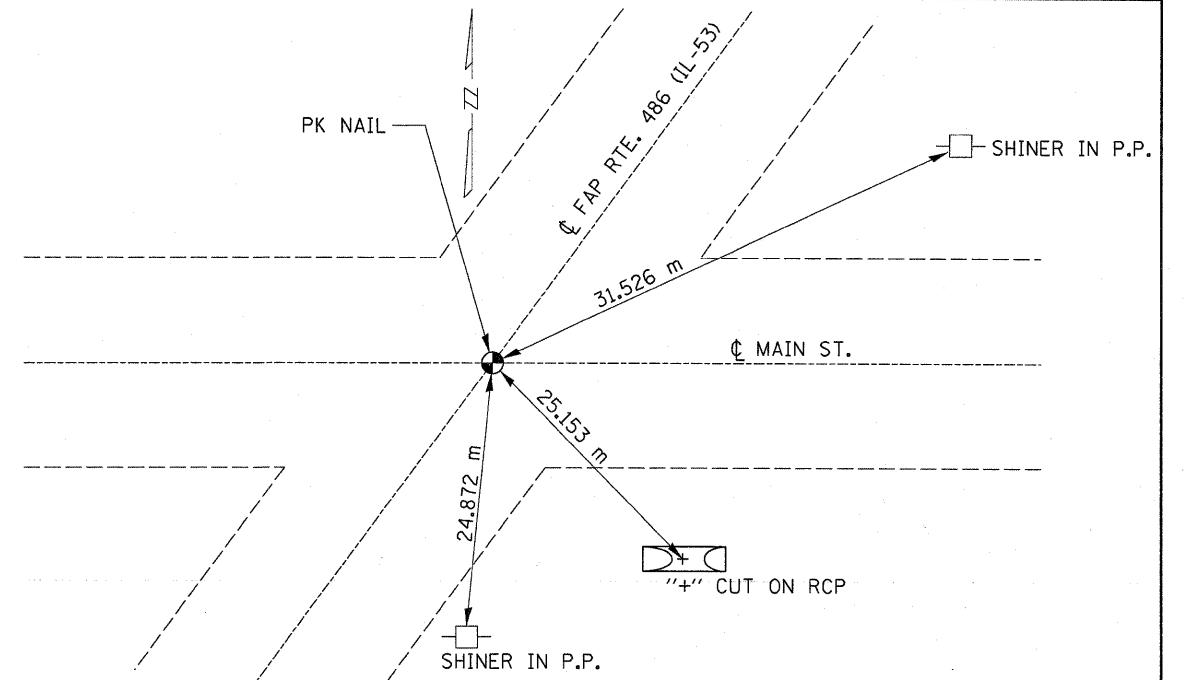
FOUND BRASS DISC @ INTERSECT. OF ILL. RTE. 53 AND WEST MAIN ST, ON ϕ OF BOTH RDWYS.

**S. QTR. COR OF THE SW
COR OF SEC. 4, - T.31 N.- R.8E.**

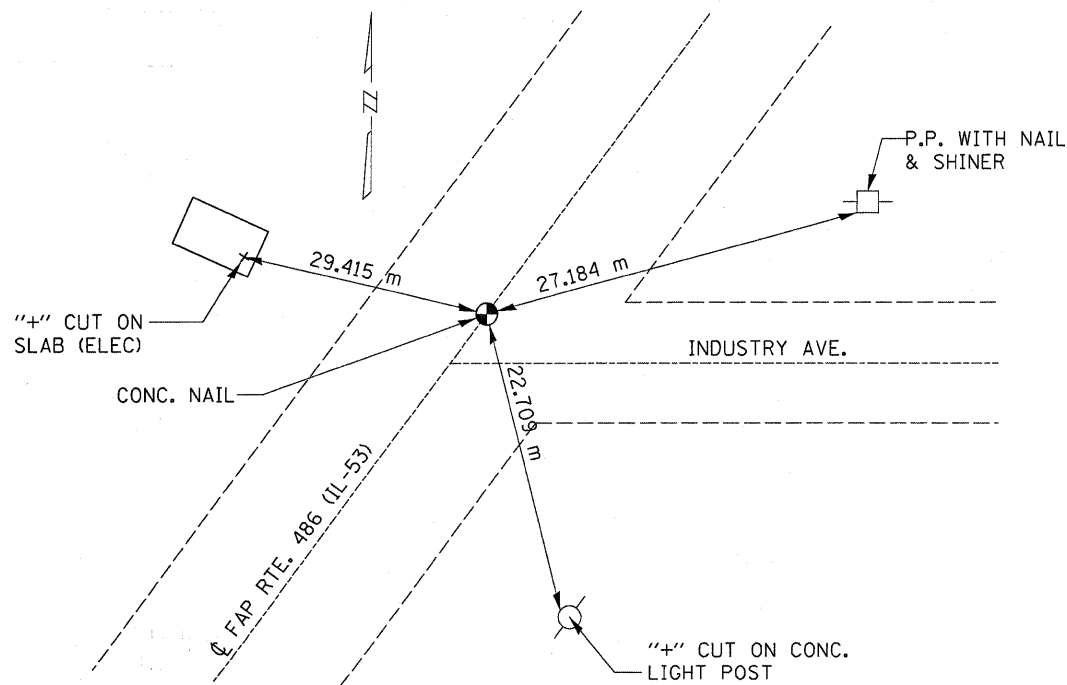


FOUND BRASS DISC \pm 1'.0' WEST ON ϕ ILL. RTE. 53

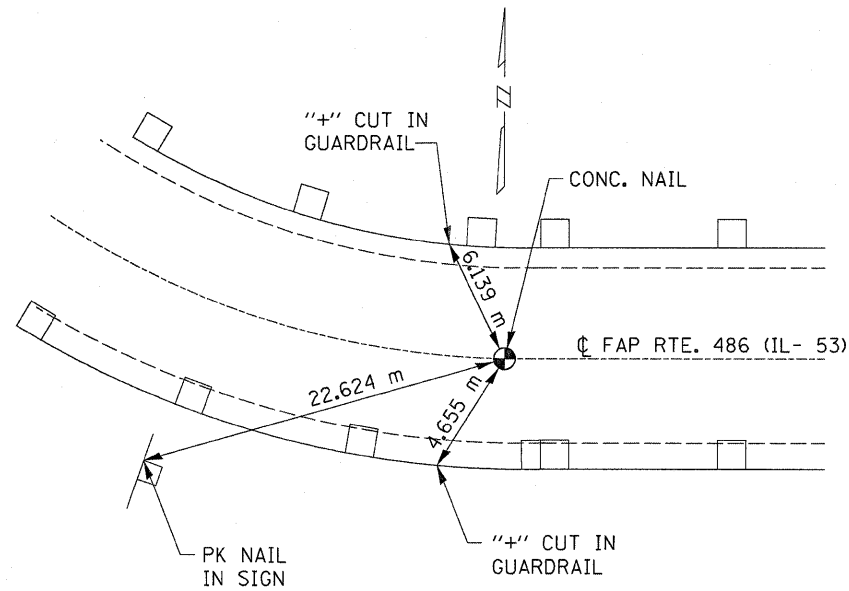
SW COR. SEC. 3, T31N.-R8E.



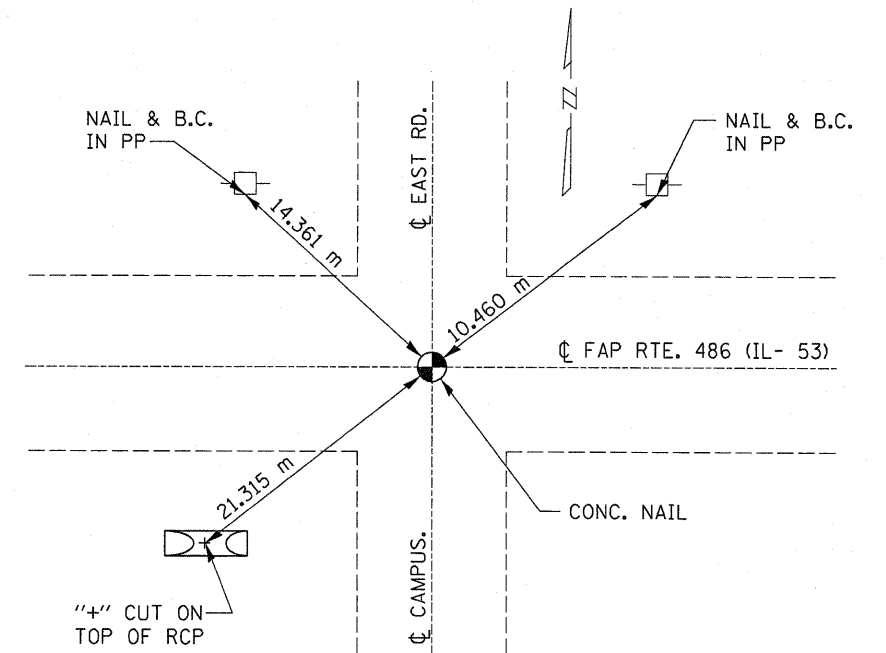
FAP RTE. 846 (IL-53) POT STA. 0+352.420



FAP RTE. 846 (IL-53) PC STA. 0+564.859



FAP RTE. 846 (IL-53) PT STA. 0+858.067



FAP RTE. 846 (IL-53) POT STA. 1+357.134

FILE NAME =	USER NAME = Ferguson	DESIGNED -	REVISED -
c:\pwork\PWIDOT\FERGUSONSA\d0118773\lehts.dgn		DRAWN -	REVISED -
		CHECKED -	REVISED -
		DATE -	REVISED -

STATE OF ILLINOIS
DEPARTMENT OF TRANSPORTATION

TIE POINTS

SCALE: SHEET NO. 1 OF 1 SHEETS STA. TO STA.

F.A.P. RTE.	SECTION	COUNTY	TOTAL SHEETS	SHEET NO.
846	(5&6)RS-2	GRUNDY	17	11
CONTRACT NO. 66475			ILLINOIS FED. AID PROJECT	