

F.A.P. RTE.	SECTION	COUNTY	TOTAL SHEETS	SHEET NO.
840	.	IROQUOIS	14	1

•(135)RS-3 & (136)RS-2

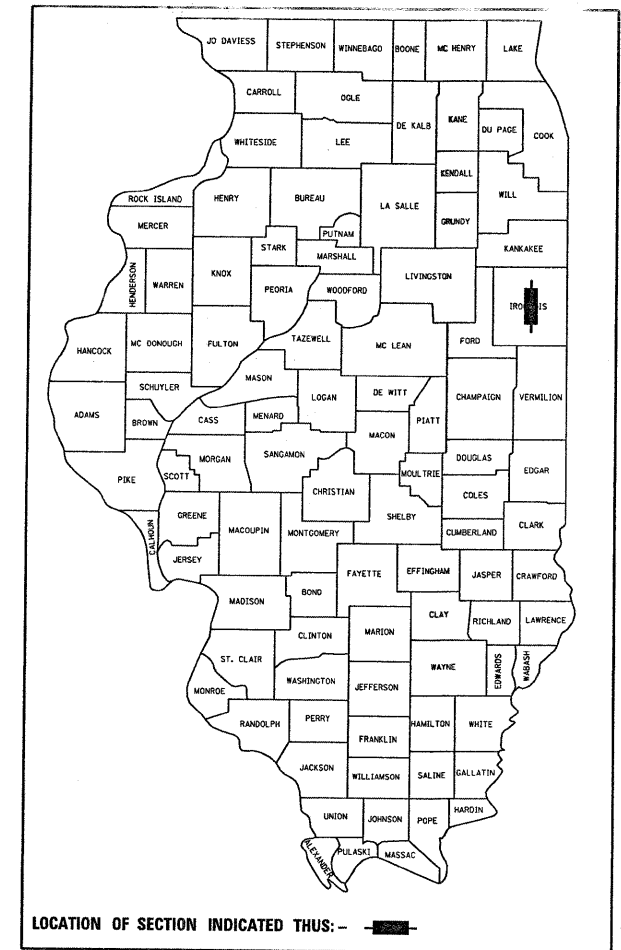
D-93-027-04

STATE OF ILLINOIS  
DEPARTMENT OF TRANSPORTATION  
DIVISION OF HIGHWAYS

**PROPOSED  
HIGHWAY PLANS**

FAP 840 (IL 49)  
(135)RS-3 & (136)RS-2  
PROJECT ESP-0840(062)  
IROQUOIS COUNTY  
C-93-028-04

3P RESURFACING FROM SOUTH OF US 24  
TO NORTH OF MILFORD ROAD



LOCATION OF SECTION INDICATED THUS: - [shaded box] -

RURAL MINOR ARTERIAL  
ADT (2007) = 1850  
P.V. = 80.2% M.U. = 4.9% S.U. = 14.9%

STATE OF ILLINOIS  
DEPARTMENT OF TRANSPORTATION  
DIVISION OF HIGHWAYS

SUBMITTED 213 2009

*Morgan F. Rosen*  
DEPUTY DIRECTOR OF HIGHWAYS, REGION ENGINEER

March 13, 2009  
*Charles G. Ingersoll*  
ENGINEER OF DESIGN AND ENVIRONMENT

March 13, 2009  
*Christine M. Reed*  
DIRECTOR OF HIGHWAYS, CHIEF ENGINEER

PRINTED BY THE AUTHORITY  
OF THE STATE OF ILLINOIS

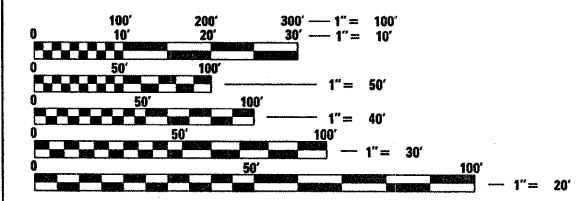
INDEX OF SHEETS

- 1 COVER SHEET
- 2 GENERAL NOTES
- 3 SUMMARY OF QUANTITIES
- 4 TYPICAL SECTIONS
- 5-6 SCHEDULES
- 7 PROJECT LAYOUT
- 8-10 TIE POINTS
- 11-14 DETAILS

STANDARDS

- 000001-05 STANDARD SYMBOLS, ABBREVIATIONS AND PATTERNS
- 001001-02 AREAS OF REINFORCEMENT BARS
- 001006 DECIMAL OF AN INCH AND OF A FOOT
- 280001-04 TEMPORARY EROSION CONTROL SYSTEMS
- 406201-01 MAILBOX TURNOUT
- 667101-01 PERMANENT SURVEY MARKERS
- 701006-03 OFF-ROAD OPERATIONS 2L, 2W, 4.5 m (15') TO 600 mm (24") FROM PAVEMENT EDGE
- 701011-02 OFF-ROAD MOVING OPERATIONS 2L, 2W, DAY ONLY
- 701301-03 LANE CLOSURE, 2L, 2W, SHORT TIME OPERATIONS
- 701306-02 LANE CLOSURE, 2L, 2W, SLOW MOVING OPERATIONS DAY ONLY, FOR SPEEDS GREATER THAN OR EQUAL TO 45 MPH
- 701311-03 LANE CLOSURE, 2L, 2W, MOVING OPERATIONS - DAY ONLY
- 701901-01 TRAFFIC CONTROL DEVICES
- 780001-02 TYPICAL PAVEMENT MARKINGS
- 781001-03 TYPICAL APPLICATIONS RAISED REFLECTIVE PAVEMENT MARKERS

MICROFILMED \_\_\_\_\_  
REEL NUMBER \_\_\_\_\_  
AWARDED \_\_\_\_\_  
RESIDENT ENGINEER \_\_\_\_\_  
AS BUILT CHANGES WERE MADE  
ON THE FOLLOWING SHEETS \_\_\_\_\_



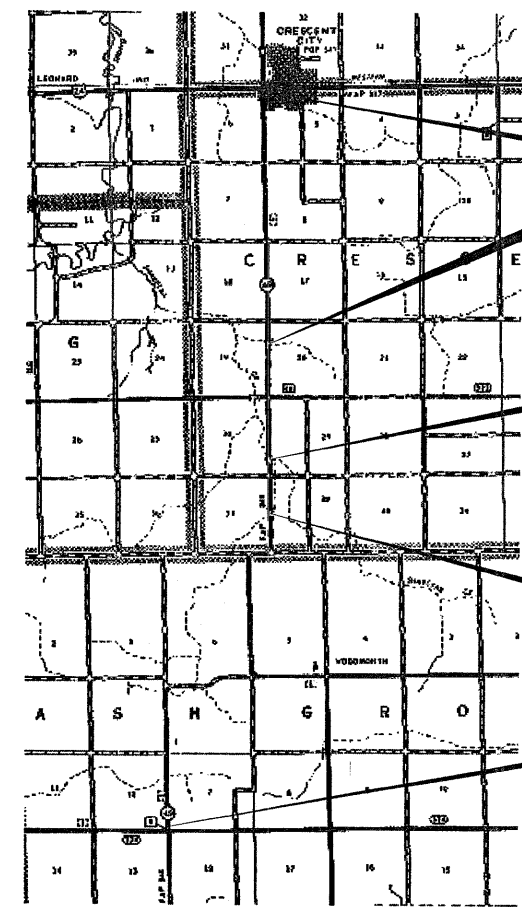
FULL SIZE PLANS HAVE BEEN PREPARED USING STANDARD ENGINEERING SCALES. REDUCED SIZED PLANS WILL NOT CONFORM TO STANDARD SCALES. IN MAKING MEASUREMENTS ON REDUCED PLANS, THE ABOVE SCALES MAY BE USED.

J.U.L.I.E.  
JOINT UTILITY LOCATION INFORMATION FOR EXCAVATION  
1-800-892-0123

DISTRICT 3 NO. (815) 434-6131

PROJECT ENGINEER: JOE KANNEL  
UNIT CHIEF: MICHELE LINDEMANN  
TOWNSHIPS: CRESCENT, ASH GROVE

CONTRACT NO. 66426



LOCATION MAP  
NOT TO SCALE

GROSS LENGTH = 56,737 FT = 10.746 MI  
NET LENGTH = 56,562 FT = 10.713 MI

END IMPROVEMENT  
STA. 870 + 51

SN 038-0191 STA. 695 + 73.5  
OMISSION STA. 695 + 32.5 TO 696 + 14.5

SN 038-0093  
OMISSION STA. 616 + 37 TO 617 + 30

SN 038-2014  
STA. 581 + 00

BEGIN IMPROVEMENT  
STA. 303 + 14

DATE - TIME: 01\DW\WORK\PI\DOT\CARPENTERD\J\ms 7 3524\0366426-sht-ALLSHTS.DGN

F.A.P. RTE.	SECTION	COUNTY	TOTAL SHEETS	SHEET NO.
840	*	IROQUOIS	14	2
STA.		TO STA.		
FED. ROAD DIST. NO.	ILLINOIS	FED. AID PROJECT		

•(135)RS-3 & (136)RS-2

GENERAL NOTES

THE THICKNESS OF HMA SHOWN ON THE PLANS IS THE NOMINAL THICKNESS. DEVIATIONS FROM THE NOMINAL THICKNESS WILL BE PERMITTED WHEN SUCH DEVIATIONS OCCUR DUE TO IRREGULARITIES IN THE EXISTING SURFACE OR BASE ON WHICH THE HMA IS PLACED.

THE HMA SURFACE OF ALL MAILBOX TURNOUTS, PRIVATE ENTRANCES, COMMERCIAL ENTRANCES, AND SIDE ROADS SHALL BE MADE NEATLY, IN A WORKMANLIKE MANNER, AND SHALL ACCURATELY CONFORM TO THE SHAPES AND DIMENSIONS SHOWN ON THE PLAN DETAILS. IF REQUIRED BY THE ENGINEER, THE CONTRACTOR SHALL BE REQUIRED TO SAW CUT THE HMA SURFACE TO CONFORM TO THE SHAPES AND DIMENSIONS SHOWN ON THE PLAN DETAILS. THIS WORK SHALL BE INCLUDED IN THE COST OF THE HMA SURFACE

THE ENGINEER WILL BE THE SOLE JUDGE CONCERNING CURING TIME FOR THE VARIOUS HMA LIFTS.

FOR STABILIZATION, ALL TYPE III BARRICADES SHALL REQUIRE A MINIMUM OF FOUR SAND BAGS PER BARRICADE.

WHERE SECTION OR SUBSECTION MONUMENTS ARE ENCOUNTERED, THE ENGINEER SHALL BE NOTIFIED BEFORE SUCH MONUMENTS ARE REMOVED. THE CONTRACTOR SHALL PROTECT AND CAREFULLY PRESERVE ALL MONUMENTS UNTIL AN AUTHORIZED SURVEYOR OR AGENT HAS WITNESSED OR OTHERWISE REFERENCED THEIR LOCATION. THE CONTRACTOR SHALL BE RESPONSIBLE FOR HAVING AN AUTHORIZED SURVEYOR REESTABLISH ANY SECTION OR SUBSECTION MONUMENTS DESTROYED BY HIS OPERATIONS.

SEEDING SHALL NOT BE PERMITTED AT ANY TIME WHEN THE GROUND IS FROZEN, WET, OR IN AN UNTILLABLE CONDITION. LOCATIONS TO BE SEEDED WILL BE DETERMINED BY THE ENGINEER.

THE FINISHED EARTHWORK SHALL HAVE A VEGETATION SUSTAINING SOIL COVERING THE TOP FOUR INCHES IN AREAS TO BE SEEDED OR SODDED. THE VEGETATION SUSTAINING SOIL REQUIRED WILL NOT BE PAID FOR SEPARATELY BUT SHALL BE INCLUDED IN THE COST OF FURNISHED EXCAVATION.

ON EXISTING PAVEMENT WHICH MAY BE SUPERELEVATED, THE NEW HMA PAVEMENT SHALL BE BUILT WITH THE SAME SUPERELEVATION UNLESS NEW SUPERELEVATION RATES ARE GIVEN ON THE PLANS.

ALL ELEVATIONS REFERRING TO U.S.G.S. MEAN SEA LEVEL DATUM.

ABANDONED UNDERGROUND UTILITIES THAT CONFLICT WITH CONSTRUCTION SHALL BE DISPOSED OF OUTSIDE THE LIMITS OF THE RIGHT OF WAY ACCORDING TO ARTICLE 202.03 OF THE STANDARD SPECIFICATIONS AND AS DIRECTED BY THE ENGINEER. THIS WORK WILL NOT BE PAID FOR SEPARATELY BUT SHALL BE INCLUDED IN THE COST OF EARTH EXCAVATION.

ANY REFERENCE TO A STANDARD IN THESE PLANS SHALL BE INTERPRETED TO MEAN THE EDITION AS INDICATED BY THE SUBNUMBER LISTED ON THE INDEX OF SHEETS OR THE COPY OF THE STANDARD INCLUDED IN THESE PLANS.

THE FOLLOWING RATES OF APPLICATION HAVE BEEN USED IN CALCULATING PLAN QUANTITIES:

GRANULAR MATERIALS	2.05	TONS / CU YD
BIT MATERIALS (PRIME COAT) ON AGGREGATE BASES	0.375	GAL / SQ YD
BITUMINOUS MATERIALS (PRIME COAT)	0.08	GAL / SQ YD
FOR ADDITIONAL HMA LIFTS "FOG COAT"	0.05	GAL / SQ YD
AGGREGATE PRIME COAT	0.002	TONS / SQ YD
HMA RESURFACING	112	LBS / SQ YD / IN
SHORT TERM PAVEMENT MARKING	10	FT / 100 FT OF APPLICATION
MIX FOR CRACKS, JTS & FLGWYS	0.0003	TONS / SQ YD
LEVEL BINDER (HAND METHOD)	0.0005	TONS / SQ YD
SUPPLEMENTAL WATERING	3	GAL / SQ YD / APPLICATION
CALCIUM CHLORIDE	2	LB / SQ YD / APPLICATION
TEMPORARY DITCH CHECKS	5	TONS AGGREGATE

THE CONTRACTOR SHALL CONTACT JULIE AT LEAST 48 HOURS PRIOR TO EXCAVATION TO DETERMINE WHICH UTILITIES ARE IN THE AREA.

STATE OF ILLINOIS  
DEPARTMENT OF TRANSPORTATION  
DISTRICT THREE

PREPARED BY: [Signature]  
DISTRICT STUDIES & PLANS ENGINEER

DATE: 2-3-09

EXAMINED BY: [Signature]  
DISTRICT CONSTRUCTION ENGINEER

Wayne L. Phillips  
DISTRICT MATERIALS ENGINEER

[Signature]  
DISTRICT OPERATIONS ENGINEER

**GENERAL NOTES**

\* DATE - TIME \*  
c:\pw\work\PI\DOT\CARPENTERD\Jms73524\0366426.sht - ALLSHTS.DGN

F.A.P. RTE.	SECTION	COUNTY	TOTAL SHEETS	SHEET NO.
840	•	IROQUOIS	14	3
STA.		TO STA.		
FED. ROAD DIST. NO.		ILLINOIS FED. AID PROJECT		

•(135)RS-3 & (136)RS-2

SUMMARY OF QUANTITIES

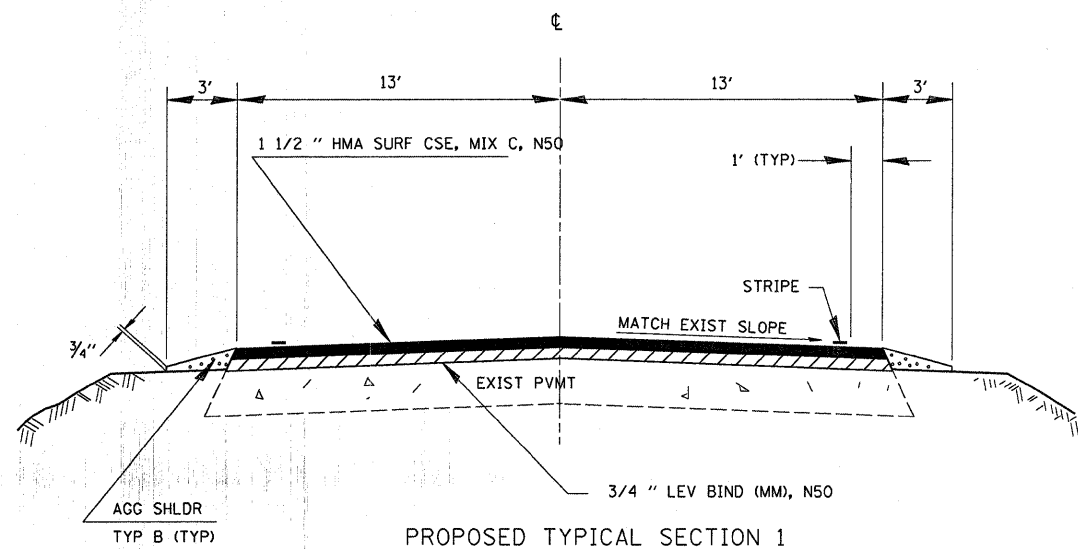
CODE NO.	CONSTRUCTION CODE TYPE: ITEM	UNIT	TOTAL QUANT	100% FEDERAL	
				I000 RDWY QUANT	
20400800	FURNISHED EXCAVATION	CU YD	33	33	
• 25000200	SEEDING, CLASS 2	ACRE	0.24	0.24	
• 25000400	NITROGEN FERTILIZER NUTRIENT	POUND	22	22	
• 25000500	PHOSPHORUS FERTILIZER NUTRIENT	POUND	22	22	
• 25000600	POTASSIUM FERTILIZER NUTRIENT	POUND	22	22	
• 25100630	EROSION CONTROL BLANKET	SQ YD	1144	1144	
35100100	AGGREGATE BASE COURSE, TYPE A	TON	119	119	
40200800	AGGREGATE SURFACE COURSE, TYPE B	TON	56	56	
40600100	BITUMINOUS MATERIALS (PRIME COAT)	GALLON	34939	34939	
40600300	AGGREGATE (PRIME COAT)	TON	665	665	
40600400	MIXTURE FOR CRACKS, JOINTS, AND FLANGEWAYS	TON	49	49	
40600525	LEVELING BINDER (HAND METHOD), N50	TON	82	82	
40600625	LEVELING BINDER (MACHINE METHOD), N50	TON	6854	6854	
40600895	CONSTRUCTING TEST STRIP	EACH	1	1	
40600982	HOT-MIX ASPHALT SURFACE REMOVAL - BUTT JOINT	SQ YD	1230	1230	
40600985	PORTLAND CEMENT CONCRETE SURFACE REMOVAL - BUTT JOINT	SQ YD	8	8	
40600990	TEMPORARY RAMP	SQ YD	195	195	
40603310	HOT-MIX ASPHALT SURFACE COURSE, MIX "C", N50	TON	13747	13747	
40800050	INCIDENTAL HOT-MIX ASPHALT SURFACING	TON	710	710	
44000155	HOT-MIX ASPHALT SURFACE REMOVAL, 1 1/2"	SQ YD	714	714	
48101200	AGGREGATE SHOULDERS, TYPE B	TON	4289	4289	
48203100	HOT-MIX ASPHALT SHOULDERS	TON	701	701	
66700205	PERMANENT SURVEY MARKERS, TYPE I	EACH	5	5	
67000400	ENGINEER'S FIELD OFFICE, TYPE A	CAL MO	3	3	
67100100	MOBILIZATION	L SUM	1	1	
70100460	TRAFFIC CONTROL AND PROTECTION, STANDARD 701306	L SUM	1	1	
70300100	SHORT-TERM PAVEMENT MARKING	FOOT	11331	11331	
70300210	TEMPORARY PAVEMENT MARKING - LETTERS AND SYMBOLS	SQ FT	61.2	61.2	
70300220	TEMPORARY PAVEMENT MARKING - LINE 4"	FOOT	126156	126156	
70300240	TEMPORARY PAVEMENT MARKING - LINE 6"	FOOT	13317	13317	
70300280	TEMPORARY PAVEMENT MARKING - LINE 24"	FOOT	44	44	
70301000	WORK ZONE PAVEMENT MARKING REMOVAL	SQ FT	1888	1888	
• 78000100	THERMOPLASTIC PAVEMENT MARKING - LETTERS AND SYMBOLS	SQ FT	61	61	
• 78000650	THERMOPLASTIC PAVEMENT MARKING - LINE 24"	FOOT	44	44	
• 78001110	PAINT PAVEMENT MARKING - LINE 4"	FOOT	126156	126156	
• 78001130	PAINT PAVEMENT MARKING - LINE 6"	FOOT	13317	13317	
• 78100100	RAISED REFLECTIVE PAVEMENT MARKER	EACH	713	713	
X0325866	CENTERLINE-RUMBLE STRIP	FOOT	4000	4000	
Z0021700	EXPANSION JOINT REHABILITATION	FOOT	104	104	

• SPECIALTY ITEMS

SUMMARY OF QUANTITIES

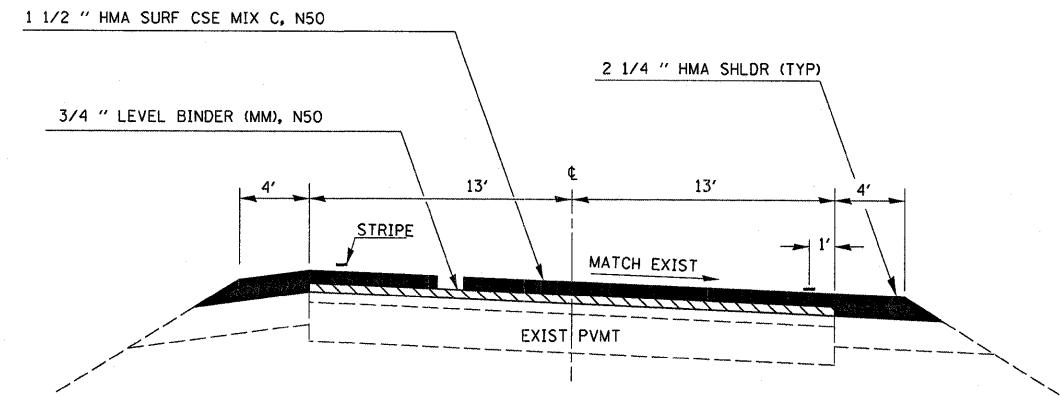
F.A.P. RTE.	SECTION	COUNTY	TOTAL SHEETS	SHEET NO.
840	*	IROQUOIS	14	4
STA.		TO STA.		
FED. ROAD DIST. NO.		ILLINOIS	FED. AID PROJECT	

•(135)RS-3 & (136)RS-2



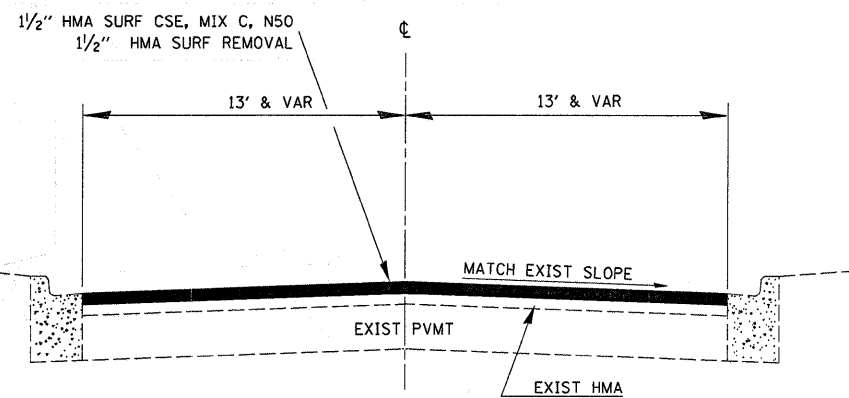
PROPOSED TYPICAL SECTION 1

- STA 303+14 TO 393+60
- STA 420+90 TO 452+00
- STA 465+46 TO 538+20
- STA 560+00 TO 616+37
- STA 617+30 TO 695+32.5
- STA 696+14.5 TO 868+64



PROPOSED TYPICAL SECTION 2

- STA 393+60 TO 420+90
- STA 452+00 TO 465+46
- 538+20 TO 560+00



PROPOSED TYPICAL SECTION 3

- STA 868+64 TO 870+51

MIX DESIGN							
MIX	PG GRADE	MAX % RAP ALLOWABLE	DESIGN AIR VOIDS	MIX COMPOSITION	FRICTION AGG	PLANT CONTROL LIMITS	DENSITY CONTROL
HMA SURFACE	PG 64-22	15%	4.0% @N50	IL 12.5 OR IL 9.5	MIXTURE C	CLASS I	CORRELATION
LEVELING BINDER	PG 64-22	25%	4.0% @N50	IL 9.5		CLASS I	
HMA SHOULDER	PG 64-22	15%	3.0% @N50	IL 12.5 OR IL 9.5	MIXTURE C	CLASS I	*

IF RAP OPTION IS SELECTED, THE ASPHALT CEMENT GRADE MAY NEED TO BE ADJUSTED. THIS WILL BE DETERMINED BY THE ENGINEER

\* MATERIAL SHALL BE COMPACTED TO 93-97 PERCENT OF THE MAXIMUM THEORETICAL DENSITY, EXCEPT THAT THE BOTTOM LIFT SHALL BE COMPACTED TO A MINIMUM OF 91.0 PERCENT. THE MAXIMUM THEORETICAL DENSITY SHALL BE DETERMINED FROM THE MOVING AVERAGE AS SPECIFICATION.

OMISSIONS  
 SN 038-0093 STA 616+37 TO 617+30  
 SN 038-0191 STA 695+32.5 TO 696+14.5

**TYPICAL SECTIONS**

F.A.P. RTE.	SECTION	COUNTY	TOTAL SHEETS	SHEET NO.
840		IROQUOIS	14	5
STA.		TO STA.		
FED. ROAD DIST. NO.	ILLINOIS	FED. AID PROJECT		

•(135)RS-3 & (136)RS-2

MILLING & RESURFACING SCHEDULE

LOCATION		LENGTH	RESURF AREA	HMA SURF CSE	LEVELING BINDER (MM)	HMA SURF REM 1 1/2"	HMA SURF REM (BUTT JT)	TEMP RAMP
STA TO STA		FOOT	SQ YD	TON	TON	SQ YD	SQ YD	SQ YD
302+24 TO 303+14	BUTT JOINT	90	260.0	21.8	10.9		173.3	14.4
303+14 TO 393+60		9046	26132.9	2195.2	1097.6			
393+60 TO 420+90	HMA SHLDRS	2730	7886.7	662.5	331.2			
420+90 TO 452+00		3110	8984.4	754.7	377.3			
452+00 TO 465+46	HMA SHLDRS	1346	3888.4	326.6	163.3			
465+46 TO 538+20		7274	21013.8	1765.2	882.6			
538+20 TO 560+00	HMA SHLDRS	2180	6297.8	529.0	264.5			
560+00 TO 580+89		2089	6034.9	506.9	253.5			
580+89 TO 581+11	SN 038-2014 (BOX CULVERT)	22	63.6	5.3	2.7			
581+11 TO 615+47		3436	9926.2	833.8	416.9			
615+47 TO 616+37	BUTT JOINT	90	260.0	21.8	10.9		173.3	14.4
616+37 TO 617+30	OMISSION S.N. 038-0093							
617+30 TO 618+20	BUTT JOINT	90	260.0	21.8	10.9		173.3	14.4
618+20 TO 694+42.5		7622.5	22020.6	1849.7	924.9			
694+42.5 TO 695+32.5	BUTT JOINT	90	260.0	21.8	10.9		173.3	14.4
695+32.5 TO 696+14.5	OMISSION S.N. 038-0191							
696+14.5 TO 697+04.5	BUTT JOINT	90	260.0	21.8	10.9		173.3	14.4
697+04.5 TO 867+74		17069.5	49311.9	4142.2	2071.1			
867+74 TO 868+64	HMA TRANSITION	90	260.0	21.8	10.9	173.3		
868+64 TO 870+51	CURB & GUTTER AREA AT US 24	187	540.2	45.4		540.2		14.4
TOTAL				13747.3	6851.0	713.5	866.5	86.4

EXPANSION JOINT REHAB	
LOCATION	FOOT
SN 038-0093	52
SN 038-0191	52
TOTAL	104

PRIMING SCHEDULE

LOCATION		LENGTH	RESURF AREA	BIT MAT (PR CT)	AGG (PR CT)	MIX FOR CRACKS JTS & FLGWYS	LEVELING BINDER (HM)
STA TO STA		FOOT	SQ YD	GALLON	TON	TON	TON
302+24 TO 303+14	BUTT JOINT	90	260.0	55	1.0	0.1	0.1
303+14 TO 393+60		9046	26132.9	5488	104.5	7.8	13.1
393+60 TO 420+90	HMA SHLDRS	2730	7886.7	1656	31.5	2.4	3.9
420+90 TO 452+00		3110	8984.4	1887	35.9	2.7	4.5
452+00 TO 465+46	HMA SHLDRS	1346	3888.4	817	15.6	1.2	1.9
465+46 TO 538+20		7274	21013.8	4413	84.1	6.3	10.5
538+20 TO 560+00	HMA SHLDRS	2180	6297.8	1323	25.2	1.9	3.1
560+00 TO 580+89		2089	6034.9	1267	24.1	1.8	3.0
580+89 TO 581+11	SN 038-2014 (BOX CULVERT)	22	63.6	13	0.3	0.0	0.0
581+11 TO 615+47		3436	9926.2	2085	39.7	3.0	5.0
615+47 TO 616+37	BUTT JOINT	90	260.0	55	1.0	0.1	0.1
616+37 TO 617+30	OMISSION S.N. 038-0093						
617+30 TO 618+20	BUTT JOINT	90	260.0	55	1.0	0.1	0.1
618+20 TO 694+42.5		7622.5	22020.6	4624	88.1	6.6	11.0
694+42.5 TO 695+32.5	BUTT JOINT	90	260.0	55	1.0	0.1	0.1
695+32.5 TO 696+14.5	OMISSION S.N. 038-0191						
696+14.5 TO 697+04.5	BUTT JOINT	90	260.0	55	1.0	0.1	0.1
697+04.5 TO 867+74		17069.5	49311.9	10355	197.2	14.8	24.7
867+74 TO 868+64	HMA TRANSITION	90	260.0	55	1.0	0.1	0.1
868+64 TO 870+51	CURB & GUTTER AREA AT US 24	187	540.2	113	2.2	0.2	0.3
TOTAL				34371	654.4	49.3	81.6

SHOULDER SCHEDULE

LOCATION		LENGTH	HMA SHLD	AGG SHLD
STA TO STA		FOOT	TON	TON
302+24 TO 303+14	BUTT JOINT	90		7.7
303+14 TO 393+60		9046		772.7
393+60 TO 420+90	HMA SHLDRS	2730	305.8	
420+90 TO 452+00		3110		265.6
452+00 TO 465+46	HMA SHLDRS	1346	150.8	
465+46 TO 538+20		7274		621.3
538+20 TO 560+00	HMA SHLDRS	2180	244.2	
560+00 TO 580+89		2089		178.4
580+89 TO 581+11	SN 038-2014 (BOX CULVERT)	22		1.9
581+11 TO 615+47		3436		293.5
615+47 TO 616+37	BUTT JOINT	90		7.7
616+37 TO 617+30	OMISSION S.N. 038-0093			
617+30 TO 618+20	BUTT JOINT	90		7.7
618+20 TO 694+42.5		7622.5		651.1
694+42.5 TO 695+32.5	BUTT JOINT	90		7.7
695+32.5 TO 696+14.5	OMISSION S.N. 038-0191			
696+14.5 TO 697+04.5	BUTT JOINT	90		7.7
697+04.5 TO 867+74		17069.5		1458
867+74 TO 868+64	HMA TRANSITION	90		7.7
868+64 TO 870+51	CURB & GUTTER AREA AT US 24	187		
TOTAL			700.8	4288.7

SCHEDULES

•(135)RS-3 & (136)RS-2

SEEDING SCHEDULE							
LOCATION	SIDE	SEEDING	FURN	EROSION	NIT	PHOS	POT
		CL 2	EXC	CONTROL	FERT	FERT	FERT
		ACRE	CU YD	BLANKET	NUT	NUT	NUT
				SQ YD	LB	LB	LB
1100 N	RT	0.011	1.5	52	1	1	1
1100 N	LT	0.011	1.5	52	1	1	1
1300 E	LT	0.011	1.5	52	1	1	1
1130 N	LT	0.011	1.5	52	1	1	1
WOODWORTH RD.	RT	0.011	1.5	52	1	1	1
1400 E	RT	0.011	1.5	52	1	1	1
1400E	LT	0.011	1.5	52	1	1	1
1200 N	LT	0.011	1.5	52	1	1	1
COUNTY ROAD	RT	0.011	1.5	52	1	1	1
SIDEROAD	RT	0.011	1.5	52	1	1	1
1300 N	RT	0.011	1.5	52	1	1	1
1300 N	LT	0.011	1.5	52	1	1	1
1400 N	RT	0.011	1.5	52	1	1	1
1400 N	LT	0.011	1.5	52	1	1	1
1500 N	RT	0.011	1.5	52	1	1	1
1500 N	LT	0.011	1.5	52	1	1	1
1600 N	RT	0.011	1.5	52	1	1	1
1600 N	LT	0.011	1.5	52	1	1	1
1700 N	RT	0.011	1.5	52	1	1	1
1700 N	LT	0.011	1.5	52	1	1	1
COUNTRY SIDE RD	RT	0.011	1.5	52	1	1	1
WALL ST.	RT	0.011	1.5	52	1	1	1
		0.242	33	1144	22	22	22

TEMPORARY PAVEMENT MARKING SCHEDULE								
LOCATION	LENGTH	TEMP PVMT MARK 4"		TEMP PVMT MARK 6"	TEMP PVMT MARK 24"	TEMP PVMT MARK LETTERS & SYMB	SHORT TERM PVMT MARK	WORK ZONE PVMT MARK REM
		WHITE FOOT	YELLOW FOOT	YELLOW FOOT	WHITE FOOT	SQ FT	FOOT	SQ FT
302+24 TO 616+37	31413	62826		7007			6283	1047
616+37 TO 617+30 (OMIT SN 038-0093)								
617+30 TO 695+32.5	7802.5	15605		1951			1561	260
695+32.5 TO 696+14.5 (OMIT SN 038-0191)								
696+14.5 TO 868+64	17249.5	34499		4312			3450	575
868+64 TO 870+51	187			47	44	61.2	37	6
NO PASSING THROUGHOUT			13226					
TOTAL		112930	13226	13317	44	61.2	11331	1888

THERMOPLASTIC PAVEMENT MARKING SCHEDULE			
LOCATION	LENGTH	THERMO PVMT MARK 24"	THERMO PVMT MARK LETTERS & SYMBOLS
		WHITE FOOT	SQ FT
868+64 TO 870+51	187	44	61.2
TOTAL		44	61.2

PAINT PAVEMENT MARKING SCHEDULE					
LOCATION	LENGTH	PAINT PVMT MARK 4"		PAINT PVMT MARK 6"	RAISED REFLECT PVMT MARKER
		WHITE FOOT	YELLOW FOOT	YELLOW FOOT	EACH
302+24 TO 616+37	31413	62826		7007	394
616+37 TO 617+30 (OMIT SN 038-0093)					
617+30 TO 695+32.5	7802.5	15605		1951	99
695+32.5 TO 696+14.5 (OMIT SN 038-0191)					
696+14.5 TO 868+64	17249.5	34499		4312	217
868+64 TO 870+51	187			47	3
NO PASSING THROUGHOUT			13226		
TOTAL		112930	13226	13317	713

NOTE: NO PASSING ZONES SHALL BE REPLACED

CENTERLINE RUMBLE STRIP SCHEDULE	
APPROXIMATE LOCATIONS	LENGTH
1130N / 1300E	1400
1130N / 1400E	1400
1200N / 1400E	1400
1200N / S.R.	1400
TOTAL	5600

NOTE: LENGTHS ARE APPROXIMATE. CENTERLINE RUMBLE STRIPS SHALL EXTEND 300 FEET BEYOND THE P.C. AND P.T. OF EACH CURVE.

**SCHEDULES**

F.A.P. RTE.	SECTION	COUNTY	TOTAL SHEETS	SHEET NO.
840	*	IROQUOIS	14	7

STA.	TO STA.
FED. ROAD DIST. NO.	ILLINOIS FED. AID PROJECT

• (135)RS-3 & (136)RS-2

SIDEROAD AND ENTRANCE SCHEDULE

STA	SIDE	SIDEROAD OR ENTRANCE	MAT	WIDTH	AREA	INC HMA SURF	BIT MAT (PR CT)	AGG (PR CT)	TEMP RAMP	HMA SURF REM BUTT JT	PCC SURF REM BUTT JT	AGG BASE CSE TY A	AGG SURF TY B
				FOOT	SQ YD	TON	GAL	TON	SQ YD	SQ YD	SQ YD	TON	TON
312+00	RT	PE	AGG	27	41	5.2	15.4	0.1					1.9
324+40	LT	CE	AGG	13	26	3.3	9.8	0.1					0.9
325+00	LT	CE	AGG	10	22	2.8	8.3	0.0					0.7
326+75	LT	CE	AGG	14	27	3.4	10.1	0.1					1.0
328+20	LT	CE	AGG	15	28	3.5	10.5	0.1					1.1
354+20	RT	1100 N	AGG	10	76	9.6	28.5	0.2					1.4
354+80	LT	1100 N	A3	19	106	13.4	8.5	0.2					
360+40	RT	PE W/ MBTO	AGG	22	79	10.0	6.3	0.2					1.6
367+20	RT	MBTO	HMA	23	18	2.3	1.4	0.0					
368+20	LT	PE	AGG	18	31	3.9	11.6	0.1					1.3
387+60	RT	PE W/ MBTO	AGG	27	89	11.2	7.1	0.2					1.9
397+40	LT	1300 E	A3	58	236	29.7	18.9	0.5					
403+60	LT	1130 N	A3	23	120	15.1	9.6	0.2					
429+60	RT	PE	HMA	23	37	4.7	3	0.07	10.2	10.2			
429+60	LT	PROP MBTO	HMA	20	41	5.2						17	
430+00	LT	CE	AGG	22	36	4.5	13.5	0.1					1.6
431+40	RT	PE	CONC	19	32	4.0	2.6	0.06	8.4		8.4		
433+40	LT	CE W/MBTO	A3	35	112	14.1	9.0	0.2					
433+35	RT	PE	AGG	16	29	3.7	10.9	0.1					1.1
435+40	LT	CE	AGG	80	100	12.6	37.5	0.2					5.7
436+60	LT	CE	AGG	45	61	7.7	22.9	0.1					3.2
455+84	RT	WOODWORTH RD.	A3	23	120	15.1	9.6	0.2					
461+25	RT	1400 E	A3	23	120	15.1	9.6	0.2					
467+11	LT	PE W/ MBTO	AGG	29	95	12.0	7.6	0.2					2.1
488+60	LT	PE W/ MBTO	AGG	14	61	7.7	4.9	0.1					1.0
499+60	RT	PE	AGG	17	68	8.6	5.4	0.1					1.2
499+60	LT	PROP MBTO	HMA	20	41	5.2						17	
513+45	LT	PE W /MBTO	AGG	22	79	10.0	6.3	0.2					1.6
520+60	RT	PE	AGG	18	70	8.8	5.6	0.1					1.3
520+60	LT	PROP MBTO	HMA	20	41	5.2						17	
530+00	RT	PE	AGG	18	70	8.8	5.6	0.1					1.3
530+00	LT	PROP MBTO	HMA	20	41	5.2						17	
538+20	LT	1400E	A3	27	133	16.8	10.6	0.3					
545+20	LT	1200 N	A3	30	143	18.0	11.4	0.3					
551+89	RT	1200 N	A3	32	150	18.9	12.0	0.3					
558+89	RT	SIDEROAD	A3	24	123	15.5	9.8	0.2					
569+70	RT	PROP MBTO	HMA	20	41	5.2						17	
569+70	LT	PE	AGG	17	68	8.6	5.4	0.1					1.2
606+67	RT	1300 N	HMA	58	236	29.7	18.9	0.47	32.2	128.9			
606+67	LT	1300 N	A3	17	100	12.6	8.0	0.2					
609+10	LT	PE	AGG	14	61	7.7	4.9	0.1					1.0
659+60	RT	1400 N	HMA	26	130	16.4	10.4	0.26	14.4	57.8			
659+60	LT	1400 N	HMA	34	156	19.7	12.5	0.31	18.9	75.6			
673+20	LT	PE W /MBTO	AGG	22	79	10.0	6.3	0.2					1.6
675+80	RT	PE	HMA	11	23	2.9	1.8	0.05	4.9	4.9			
677+80	LT	PE	AGG	30	97	12.2	7.8	0.2					2.1
679+40	LT	PE	AGG	23	81	10.2	6.5	0.2					1.6
682+10	RT	CE	AGG	18	70	8.8	5.6	0.1					1.3
699+20	RT	PE	AGG	27	90	11.3	7.2	0.2					1.9
712+60	RT	1500 N	A3	14	90	11.3	7.2	0.2					
712+60	LT	1500 N	A3	17	100	12.6	8.0	0.2					
712+90	LT	PROP MBTO	HMA	20	41	5.2						17	
744+40	LT	PE	AGG	30	97	12.2	7.8	0.2					2.1
765+60	RT	1600 N	A3	14	90	11.3	7.2	0.2					
765+60	LT	1600 N	A3	17	100	12.6	8	0.2					
779+50	RT	CE	AGG	15	64	8.1	5.1	0.1					1.1
780+80	RT	CE	AGG	15	64	8.1	5.1	0.1					1.1
787+00	LT	PE	AGG	13	59	7.4	4.7	0.1					0.9
799+60	RT	PE	AGG	16	66	8.3	5.3	0.1					1.1
799+60	LT	MBTO	HMA	23	18	2.3	1.4	0					
812+40	RT	PE W / MBTO	AGG	14	61	7.7	4.9	0.1					1.0
818+60	RT	1700 N	HMA	20	110	13.9	8.8	0.22	11.1	44.4			
818+60	LT	1700 N	HMA	15	93	11.7	7.4	0.19	8.3	33.3			
843+60	LT	PE	HMA	19	76	9.6	6.1	0.2		8.4			
856+20	LT	PE	AGG	14	61	7.7	4.9	0.1					1.0
858+60	RT	PE	AGG	23	81	10.2	6.5	0.2					1.6
861+20	RT	COUNTRY SIDE RD	A3	17	100	12.6	8	0.2					
864+80	RT	WALL ST.	A3	21	113	14.2	9	0.2					
864+90	LT	CE	AGG	25	86	10.8	6.9	0.2					1.8
865+55	LT	CE	AGG	24	84	10.6	6.7	0.2					1.7
869+35	LT	PROP MBTO	HMA	20	41	5.2						17	
		TOTAL				709.7	568.1	10.73	108.4	363.5	8.4	119	56

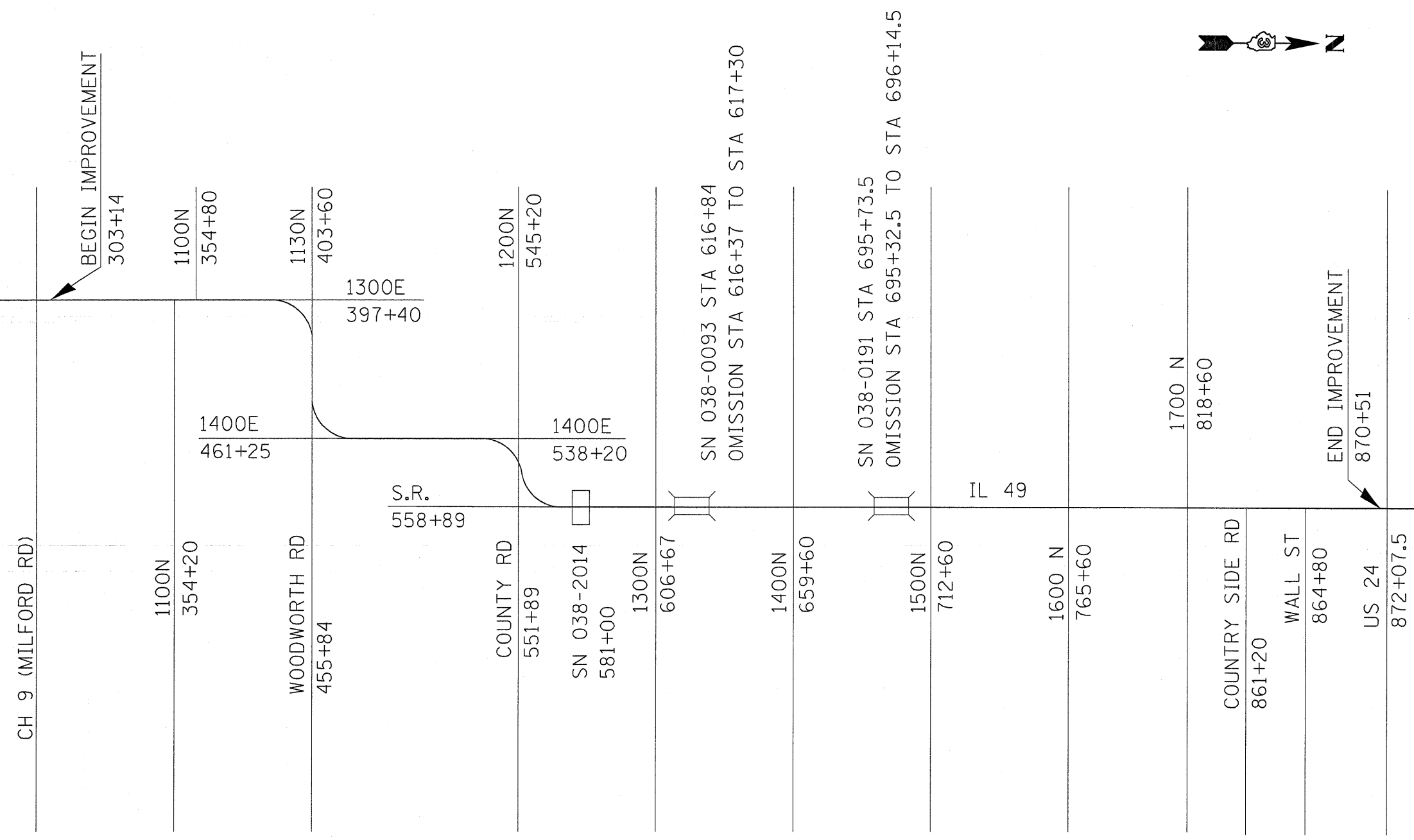
SCHEDULES

\* DATE - TIME \*  
 C:\pwwork\KIPW\DOT\CARPENTERD\dm3524\366426-sth-allshts.dgn

CONTRACT NO. 66426

F.A.P. RTE.	SECTION	COUNTY	TOTAL SHEETS	SHEET NO.
840	*	IROQUOIS	14	8
STA.		TO STA.		
FED. ROAD DIST. NO.		ILLINOIS	FED. AID PROJECT	

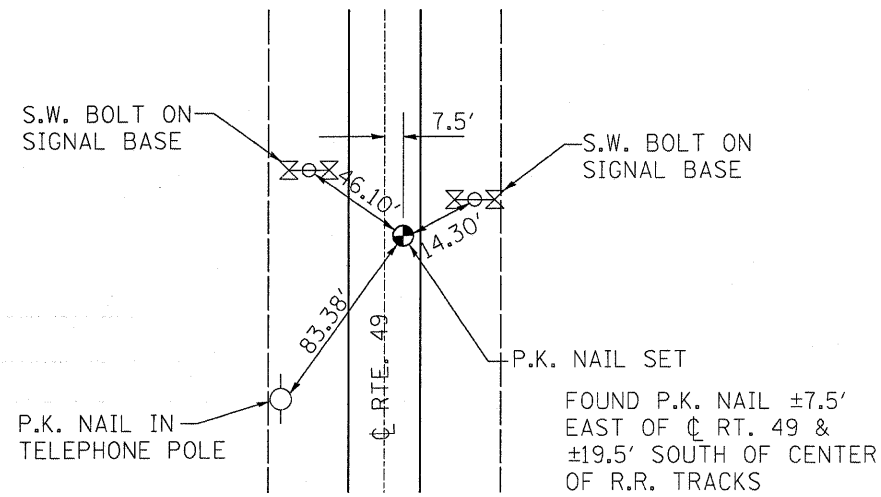
• (135)RS-3 & (136)RS-2



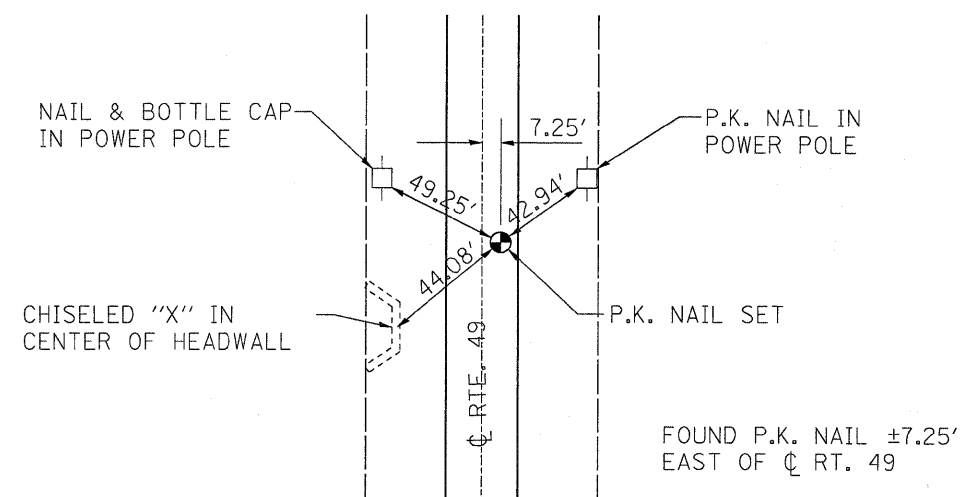
**PROJECT LAYOUT**



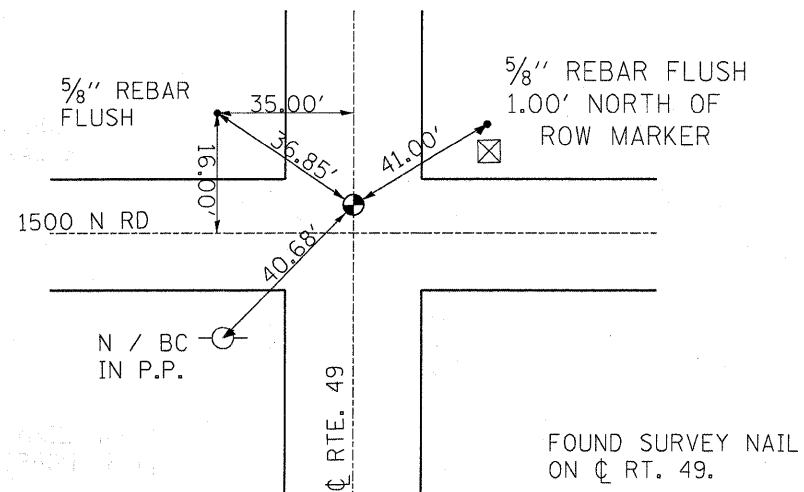
F.A.P. RTE.	SECTION	COUNTY	TOTAL SHEETS	SHEET NO.
840	*	ILLINOIS	14	9
STA.		TO STA.		
FED. ROAD DIST. NO.		ILLINOIS	FED. AID PROJECT	
*(135)RS-3 & (136)RS-2				



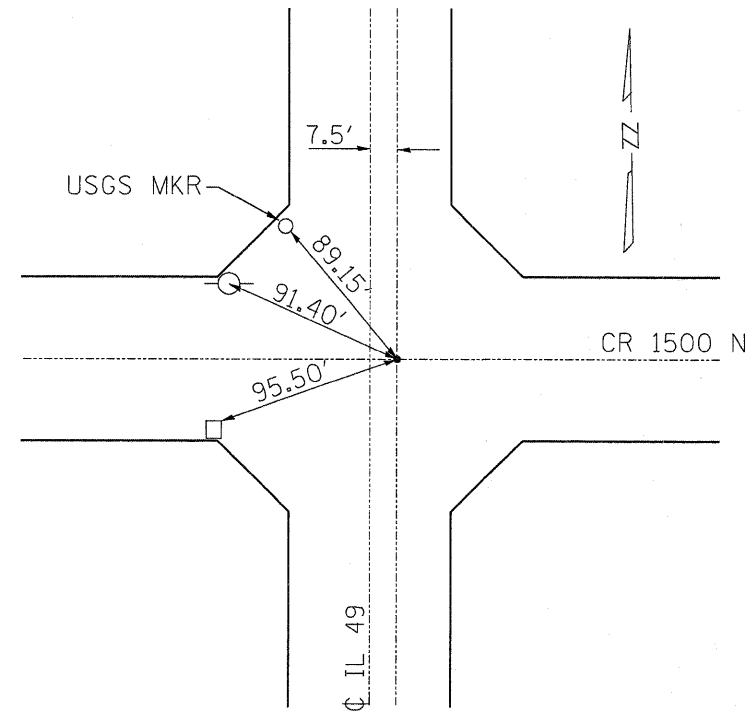
**PK NAIL**  
**N.E. CORNER SEC. 6, T.26N., R.13W., OF 2ND P.M.**  
**REPLACE WITH PERMANENT SURVEY MARKER**



**PK NAIL**  
**S.E. CORNER SEC. 6, T.26N., R.13W., OF 2ND P.M.**  
**REPLACE WITH PERMANENT SURVEY MARKER**



**S.E. CORNER SEC. 18, T.25N., R.13W., OF 2ND P.M.**  
**REPLACE WITH PERMANENT SURVEY MARKER**

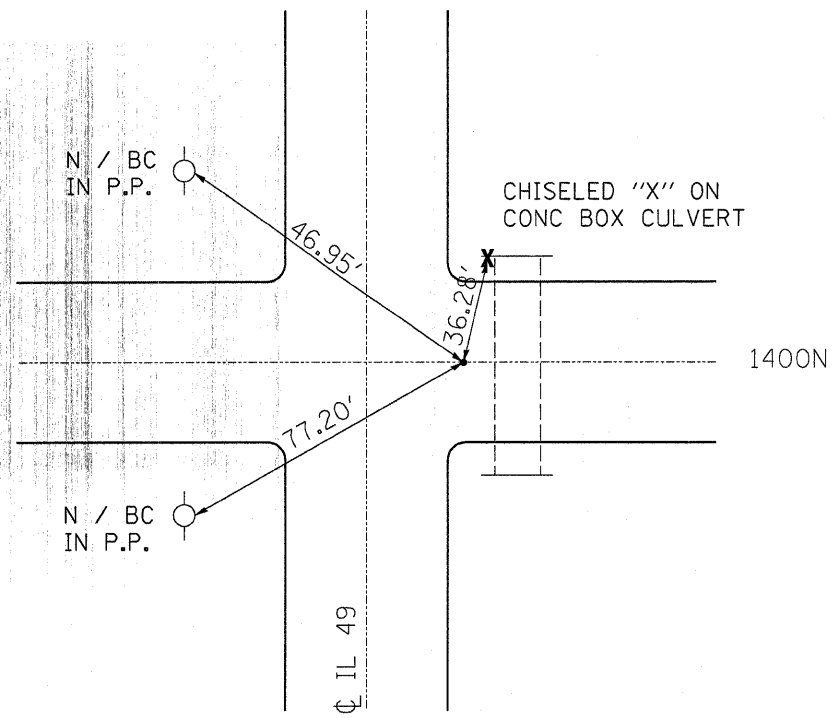


**PK NAIL**  
**SEC 20 T26N-R 13W**  
**REPLACE WITH PERMANENT SURVEY MARKER**

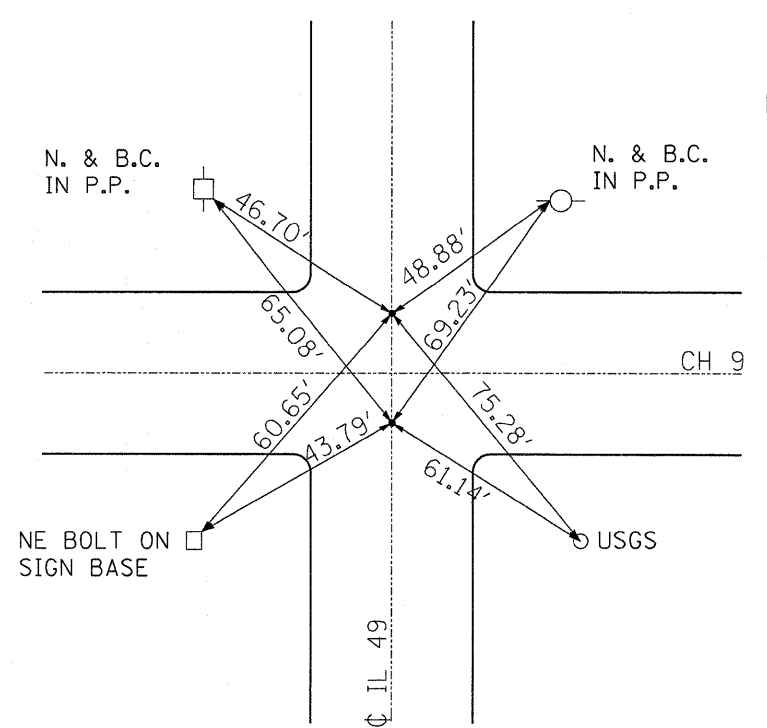
**TIE POINTS**

F.A.P. RTE.	SECTION	COUNTY	TOTAL SHEETS	SHEET NO.
840	*	ILLINOIS	14	10
STA.		TO STA.		
FED. ROAD DIST. NO.		ILLINOIS FED. AID PROJECT		

\*(135)RS-3 & (136)RS-2



**PK NAIL**  
N.W. CORNER SEC 32 T26N-R 13W

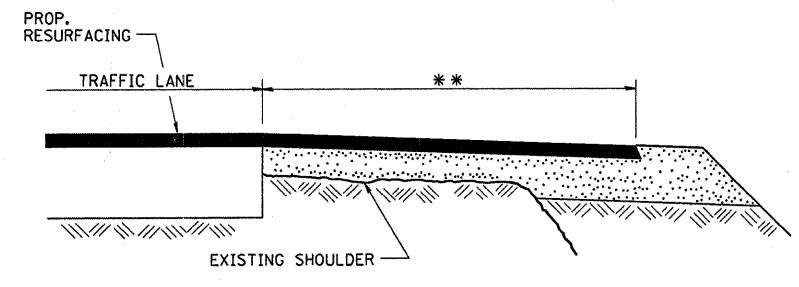
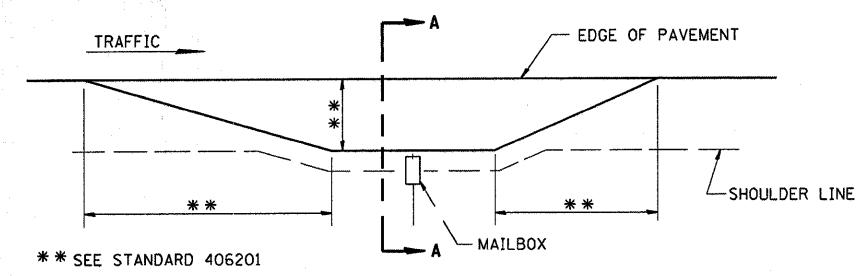


**2 PK NAILS**  
N.W. SEC 18 T25N-R 13W  
REPLACE WITH PERMANENT SURVEY MARKERS

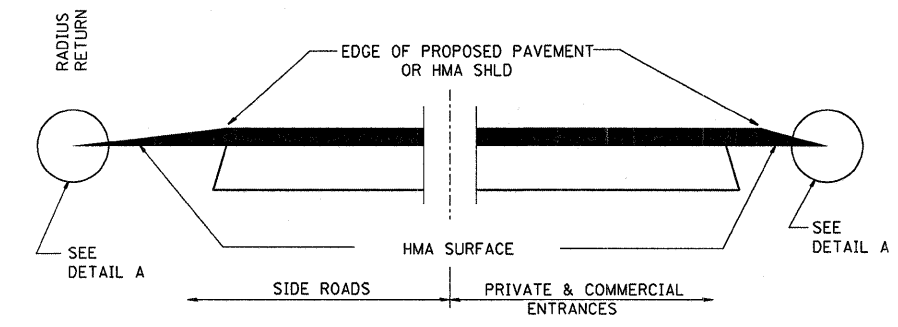
**TIE POINTS**

F.A.P. RTE.	SECTION	COUNTY	TOTAL SHEETS	SHEET NO.
840	*	IROQUOIS	14	11
STA.		TO STA.		
FED. ROAD DIST. NO. ILLINOIS FED. AID PROJECT				

\*(135)RS-3 & (136)RS-2

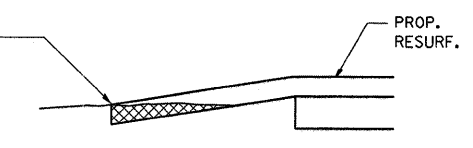


SECTION A-A  
MAILBOX TURNOUT DETAILS

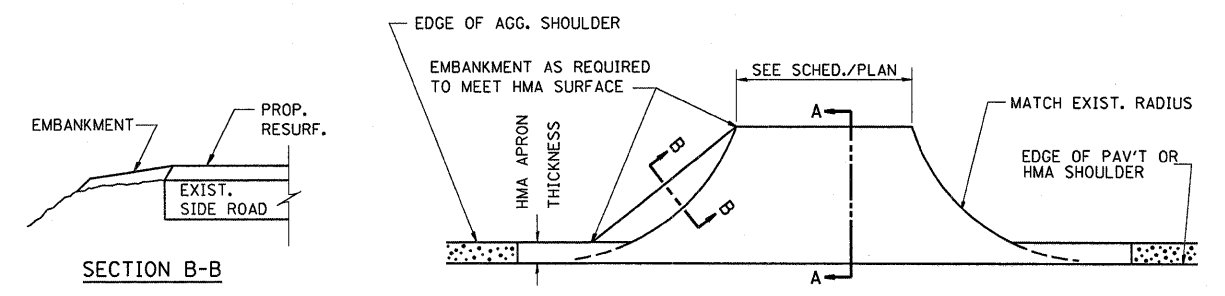


SECTION A-A  
DETAILS AT ENTRANCES & SIDE ROADS

THE COST OF REMOVAL AT EXISTING HMA OR P.C.C. LOCATIONS SHALL BE PAID FOR PER SQ YD BY THE APPROPRIATE PAY ITEM. REMOVAL AT EXISTING AGG. LOCATIONS SHALL BE INCIDENTAL TO THE HMA. A-3 LOCATIONS SHALL BE FEATHER TAPERED.



DETAIL A

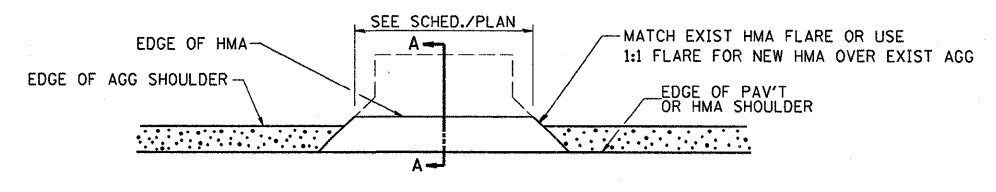


SECTION B-B

PLAN AT SIDE ROADS

AGG. SHOULDER IS NOT TO BE PLACED AROUND SIDE ROAD RADII

PROP HMA SHLD SHALL NOT BE CONSTRUCTED THROUGH HMA SIDEROADS.



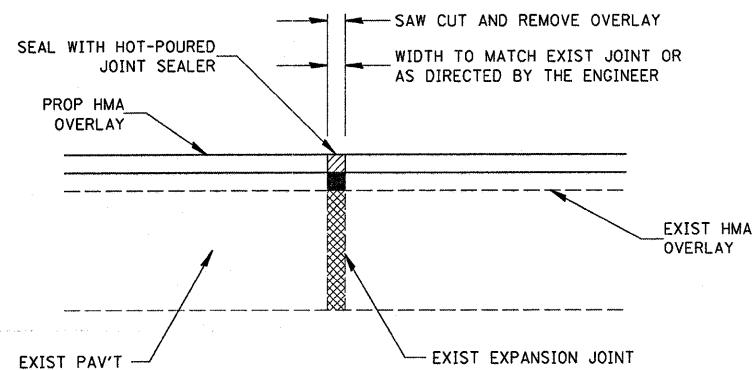
PLAN AT PRIVATE & COMMERCIAL ENTRANCES  
(DO NOT RESURFACE FIELD ENTRANCES)

DETAILS

DATE TIME: C:\pw\_wor\K\PW\DOT\CARPENTERD\cims73524\3366426-s77-ALLSHTS.DGN

F.A.P. RTE.	SECTION	COUNTY	TOTAL SHEETS	SHEET NO.
840	*	IROQUOIS	14	12
STA.		TO STA.		
FED. ROAD DIST. NO.		ILLINOIS FED. AID PROJECT		

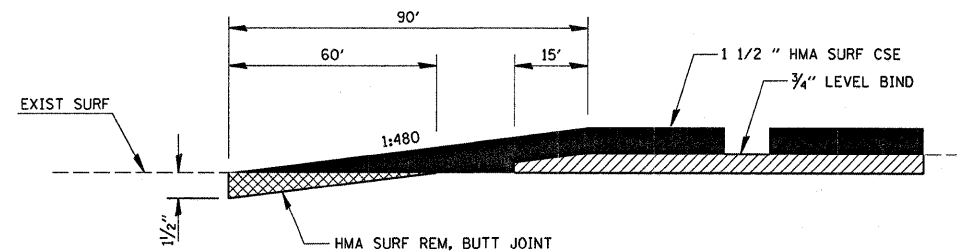
•(135)RS-3 & (136)RS-2



**EXPANSION JOINT REHABILITATION DETAIL**

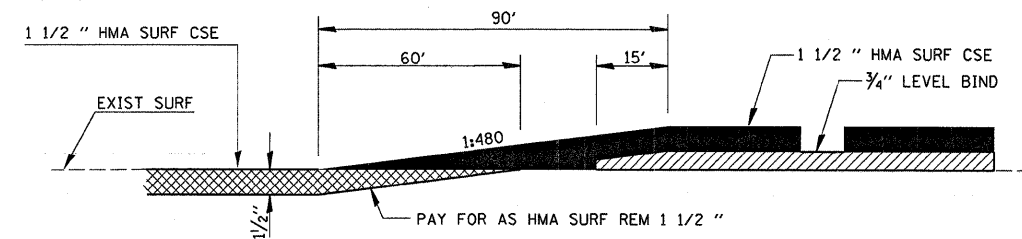
**GENERAL NOTES:**

1. THE NEW HMA OVERLAY SHALL BE SAWED, REMOVED, AND THE JOINT AREA CLEANED. PRIOR TO PLACING THE HOT-POURED JOINT SEALER THE JOINT SHALL BE BLOWN OUT WITH COMPRESSED AIR.
2. THIS WORK SHALL BE PAID FOR AT THE CONTRACT UNIT PRICE PER FOOT FOR EXPANSION JOINT REHABILITATION.



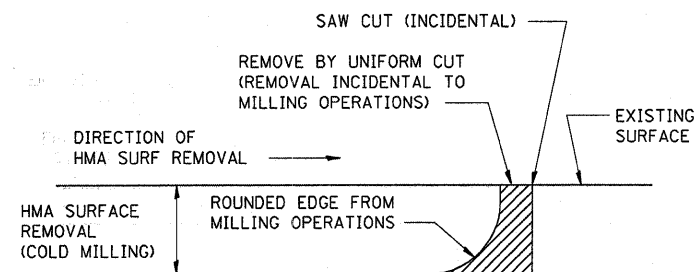
**HMA SURFACE REMOVAL BUTT JOINT**

302+24 TO 303+14  
 615+47 TO 616+37  
 617+30 TO 618+20  
 694+42.5 TO 695+32.5  
 696+14.5 TO 697+04.5



**HMA TAPER**

867+74 TO 868+64



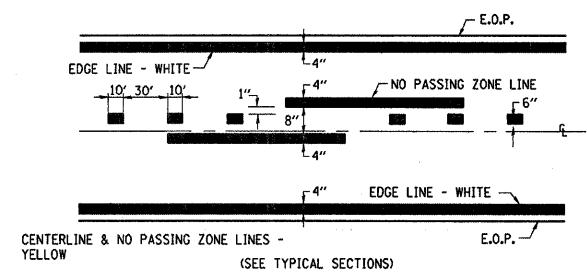
NOTE: WHEN MILLING OPERATIONS PRODUCE A ROUNDED EDGE, THEN A SAW CUT SHALL BE USED TO MANUFACTURE A PERPENDICULAR EDGE AS SHOWN IN THE DETAIL. THE ENGINEER SHALL BE THE SOLE JUDGE CONCERNING THE USE OF THIS DETAIL

**HMA DETAIL AT BUTT JOINTS**

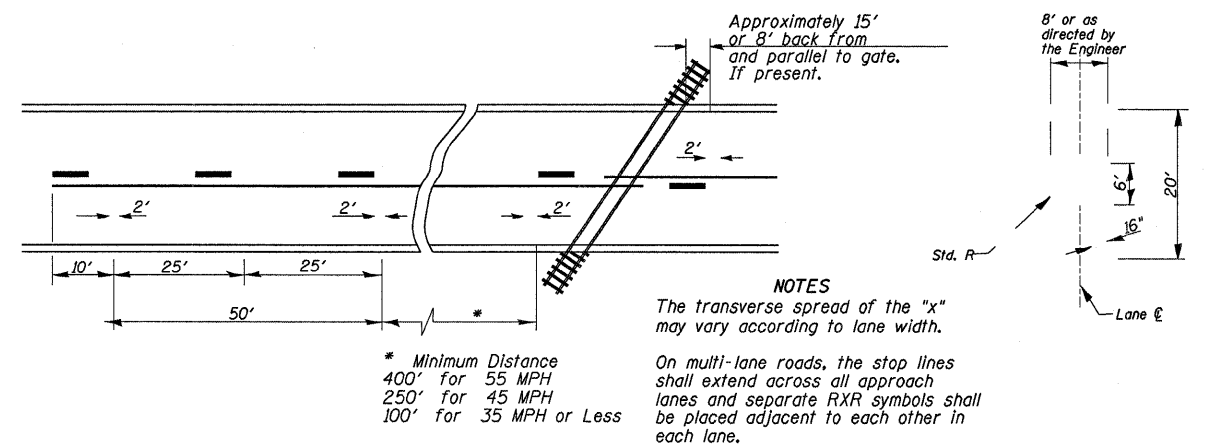
**DETAILS**

F.A.P. RTE.	SECTION	COUNTY	TOTAL SHEETS	SHEET NO.
840		IROQUOIS	14	13
STA.		TO STA.		
FED. ROAD DIST. NO.		ILLINOIS FED. AID PROJECT		

•(135)RS-3 & (136)RS-2



**PAVEMENT MARKING**



**NOTES**  
 The transverse spread of the "x" may vary according to lane width.  
 On multi-lane roads, the stop lines shall extend across all approach lanes and separate RXR symbols shall be placed adjacent to each other in each lane.

\* Minimum Distance  
 400' for 55 MPH  
 250' for 45 MPH  
 100' for 35 MPH or Less

**PAVEMENT MARKINGS AT RAILROAD-HIGHWAY GRADE CROSSING**

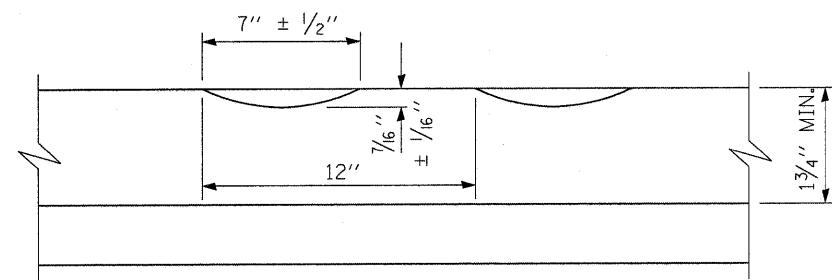
**DETAILS**

\* DATE - TIME \*  
 C:\pw\work\K\PW\DOT\CARPENTERD\cems73524\c366426-sht-allshts.dgn

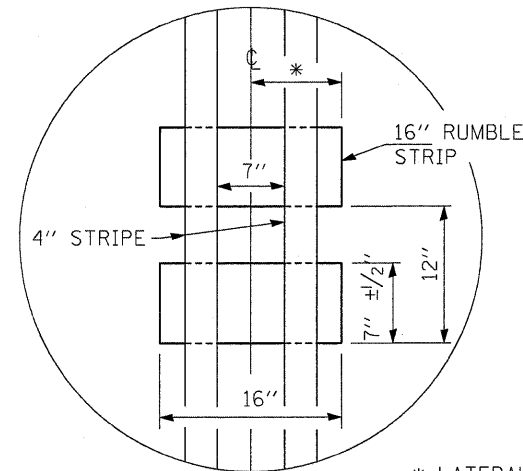
F.A.P. RTE.	SECTION	COUNTY	TOTAL SHEETS	SHEET NO.
840	*	IROQUOIS	14	14

STA.	TO STA.

FED. ROAD DIST. NO. ILLINOIS FED. AID PROJECT  
 \*(135)RS-3 & (136)RS-2

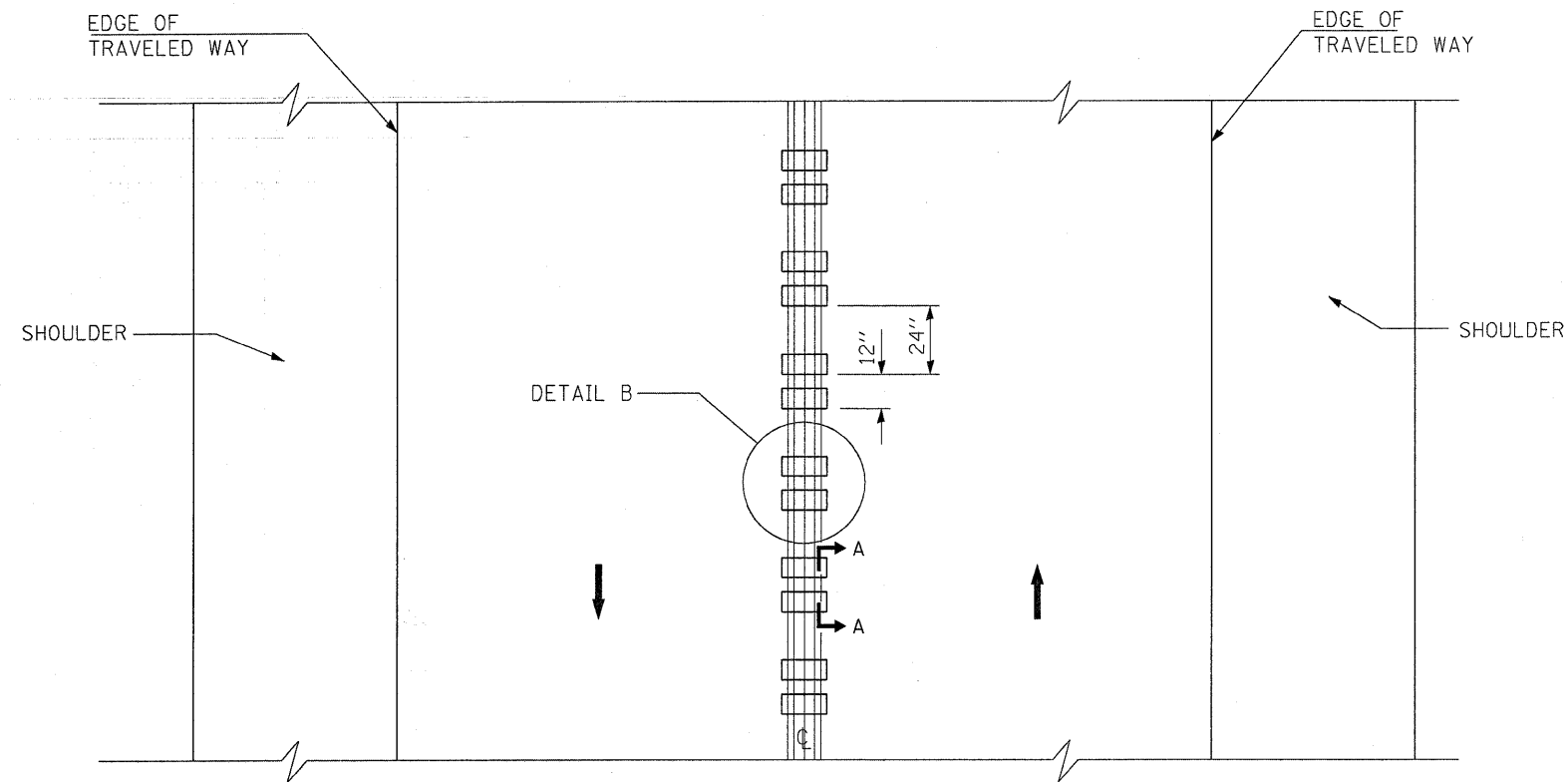


SECTION A-A



DETAIL B

\* LATERAL DEVIATION SHALL NOT EXCEED ONE INCH IN 100 FEET.



TWO-WAY ROAD

GENERAL NOTES

SEE STANDARD 780001 FOR STRIPING.

RUMBLE STRIPS SHALL NOT BE PLACED ON BRIDGES.

ALL RUMBLE STRIPS SHALL BE MILLED.

CENTERLINE RUMBLE STRIPS SHALL BE CONTINUOUS THROUGH CONNECTIONS OF SIDEROADS WITH NO LEFT TURN LANES.

DISCONTINUE CENTERLINE RUMBLE STRIPS THROUGH THE LIMITS OF ALL LEFT TURN LANES, INCLUDING ANY LANE TAPER SECTIONS.

WHERE USED, ADJUST SPACING OF RAISED REFLECTIVE PAVEMENT MARKERS TO FALL IN WIDER GAP BETWEEN RUMBLE STRIPS.

CENTERLINE RUMBLE STRIPS SHALL BE PLACED IN NO PASSING ZONES ONLY.

**CENTERLINE RUMBLE STRIPS DETAIL**