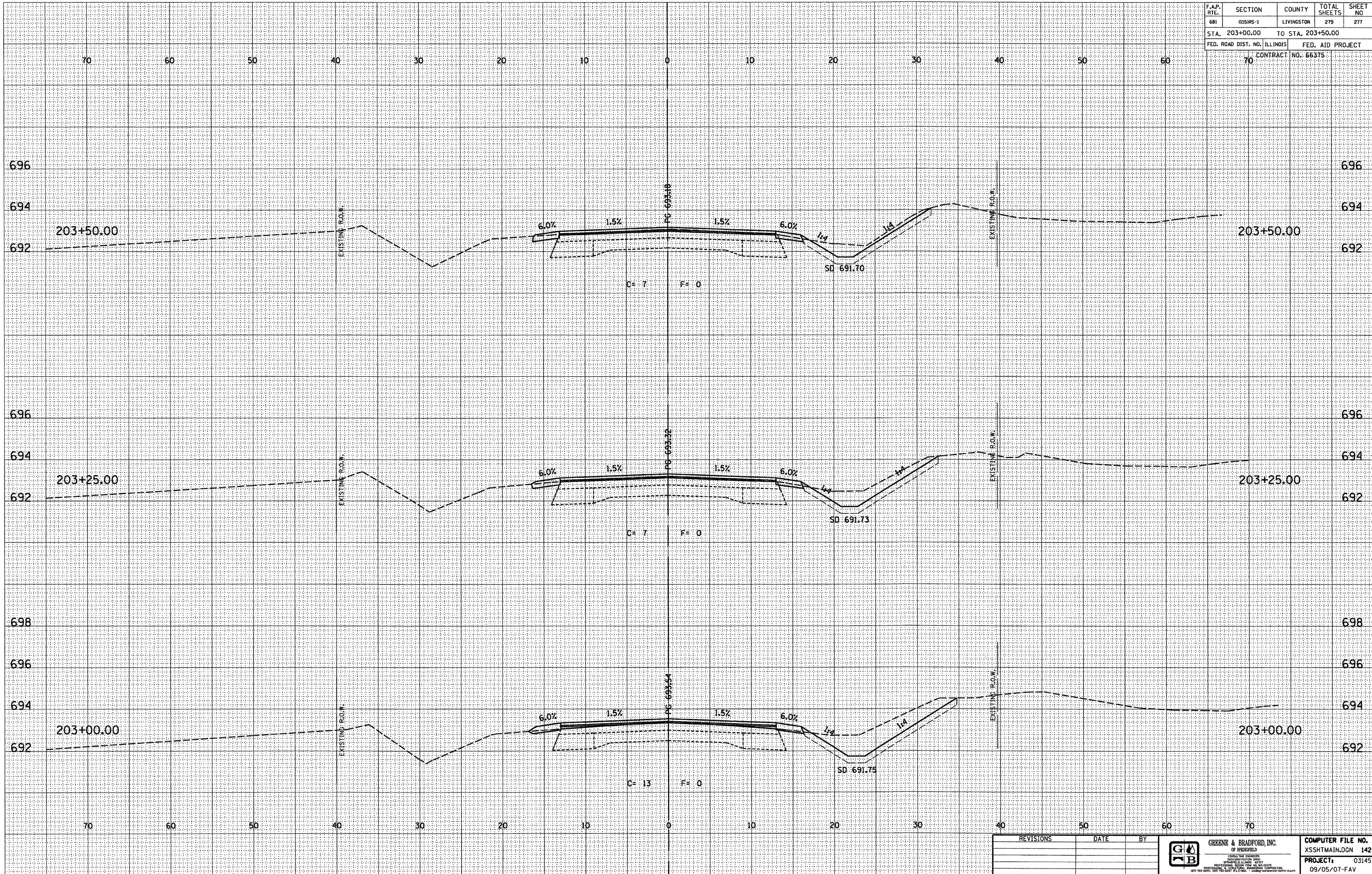


F.A.P. RTE.	SECTION	COUNTY	TOTAL SHEETS	SHEET NO
681	015HRS-1	LIVINGSTON	279	277
STA. 203+00.00		TO STA. 203+50.00		
FED. ROAD DIST. NO. ILLINOIS		FED. AID PROJECT		
70		CONTRACT NO. 66375		



DESIGN		
INT.	DATE	REASON

DATE	BY

SURVEYED _____
 FINAL SURVEY _____
 NOTE BOOK _____
 AREAS CHECKED _____
 NO. _____

PLOTS & CHECKS		
INT.	DATE	REASON

DATE	BY

SURVEYED _____
 ORIGINAL SURVEY _____
 NOTE BOOK _____
 AREAS CHECKED _____
 NO. _____

CHECKS		
INT.	DATE	REASON

REVISIONS	DATE	BY

GREENE & BRADFORD, INC.
OF BIRMINGHAM

CONSULTING ENGINEERS
SURVEYING ENGINEERS
PROFESSIONAL ENGINEERS
PROFESSIONAL LAND SURVEYORS
PROFESSIONAL GEOTECHNICAL ENGINEERS
PROFESSIONAL CIVIL ENGINEERS
PROFESSIONAL ELECTRICAL ENGINEERS
PROFESSIONAL MECHANICAL ENGINEERS
PROFESSIONAL CHEMICAL ENGINEERS
PROFESSIONAL INDUSTRIAL ENGINEERS
PROFESSIONAL METALLURGICAL ENGINEERS
PROFESSIONAL NUCLEAR ENGINEERS
PROFESSIONAL PETROLEUM ENGINEERS
PROFESSIONAL SAFETY ENGINEERS
PROFESSIONAL THERMAL ENGINEERS
PROFESSIONAL WIND ENGINEERS

COMPUTER FILE NO.	XSSHTMAIN.DGN 142
PROJECT:	03145
	09/05/07-FAV

E-XSEC 2:1 06/09/03

CROSS SECTIONS - FAP 681 (IL RTE. 116) LIVINGSTON COUNTY
STA. 203+00.00 TO STA. 203+50.00