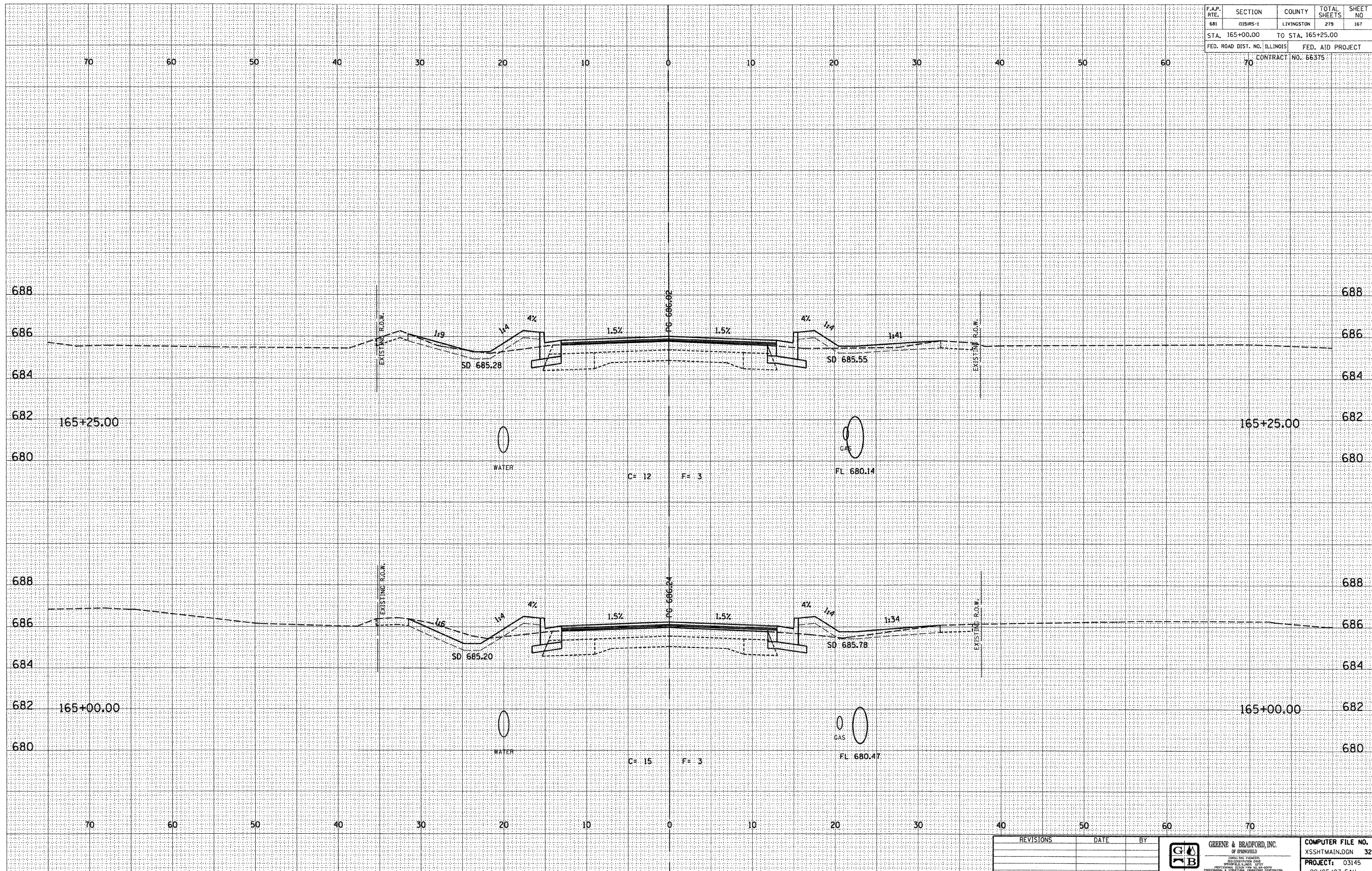


F.A.P. RTE.	SECTION	COUNTY	TOTAL SHEETS	SHEET NO.
681	018RS-1	LIVINGSTON	219	167
STA. 165+00.00		TO STA. 165+25.00		
FED. ROAD DIST. NO. ILLINOIS		FED. AID PROJECT		
70		CONTRACT NO. 66375		



DESIGN		
INT.	DATE	REASON

DATE	BY	DESCRIPTION

PLOTS & CHECKS			
INT.	DATE	NO.	REASON

DATE	BY	DESCRIPTION

CHECKS		
INT.	DATE	REASON

REVISIONS	DATE	BY



GREENE & BRADFORD, INC.
OF SPRINGFIELD
300 CONVENT ROAD
SPRINGFIELD, ILLINOIS 62761
TEL: 217-223-1100 FAX: 217-223-1101
WWW.GRENEBRADFORD.COM

COMPUTER FILE NO.
XSSHTMAIN.DGN 32
PROJECT: 03145
09/05/07-FAV

E-XSEC 2:1 06/09/03

CROSS SECTIONS - FAP 681 (IL RTE. 116) LIVINGSTON COUNTY
STA. 165+00.00 TO STA. 165+25.00