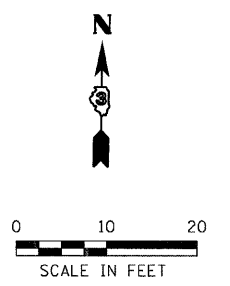
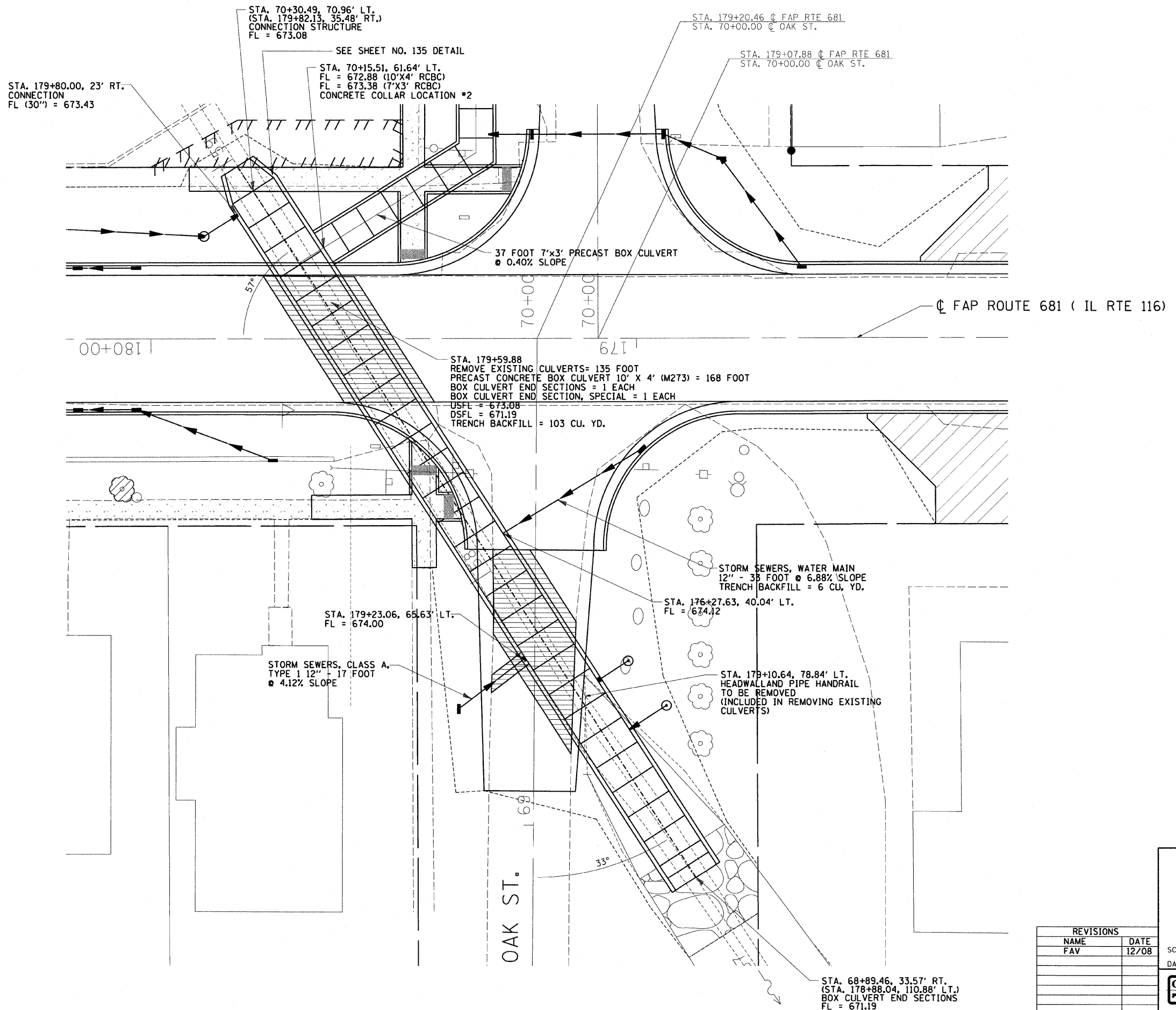


DESIGN		
INT.	DATE	REASON

PLOTS & CHECKS		
INT.	DATE	REASON

CHECKS		
INT.	DATE	REASON

F.A.P. RTE.	SECTION	COUNTY	TOTAL SHEETS	SHEET NO.
681	(115)RS-1	LIVINGSTON	279	134
STA.		TO STA.		
FED. ROAD DIST. NO.		ILLINOIS	FED. AID PROJECT	
CONTRACT NO. 66375				



ILLINOIS DEPARTMENT OF TRANSPORTATION
BOX CULVERT DETAILS
 FAP 681 (IL RTE. 116)
 SECTION (115)RS-1
 LIVINGSTON COUNTY
 VILLAGE OF CULLOM

REVISIONS	
NAME	DATE
FAV	12/08

SCALE: VERT. DRAWN BY: BISHOP
 HORIZ. DESIGNED BY: BOTT
 DATE: 11/07/03 CHECKED BY: COLBROOK

GREENE & BRADFORD, INC.
 OF SPRINGFIELD
 CONSULTING ENGINEERS
 PROFESSIONAL ENGINEERING CORPORATION
 1015 W. 10TH ST., SPRINGFIELD, ILL. 62761-1015
 (618) 223-1111 FAX (618) 223-1112

COMPUTER FILE NO.
 03145 CD1
 PROJECT 03145
 09/05/07-FAV