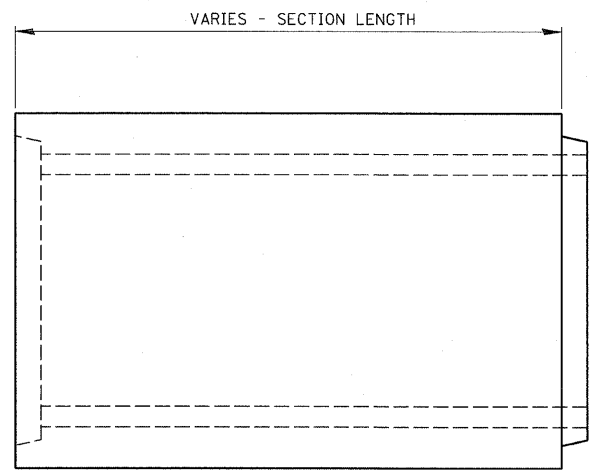
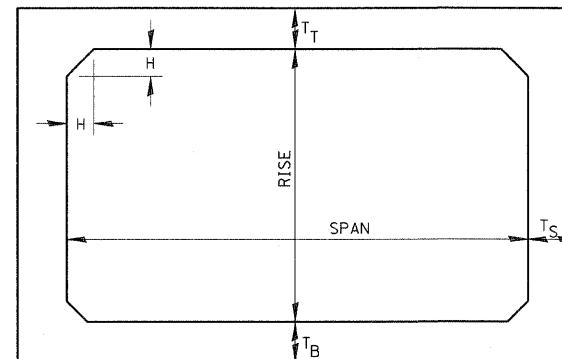


F.A.P. RTE.	SECTION	COUNTY	TOTAL SHEETS	SHEET NO.
681	(115)RS-1	LIVINGSTON	279	127
STA.		TO STA.		
FED. ROAD DIST. NO.	ILLINOIS	FED. AID PROJECT		
CONTRACT NO. 66375				



ELEVATION



NOTE: THE HAUNCH DIMENSION H, IS EQUAL TO THE WALL THICKNESS T_S.

TYPICAL BOX SECTION

SPAN, FEET	T _T , INCHES		T _B , INCHES		T _S , INCHES	
	M 259	M 273	M 259	M 273	M 259	M 273
3	4	7	4	6	4	4
4	5	7½	5	6	5	5
5	6	8	6	7	6	6
6	7	8	7	7	7	7
7	8	8	8	8	8	8
8	8	8	8	8	8	8
9	9	9	9	9	9	9
10	10	10	10	10	10	10
11	11	11	11	11	11	11
12	12	12	12	12	12	12

TYPICAL THICKNESSES

GENERAL NOTES:

MINIMUM COVER FOR BOX
CULVERTS SHALL BE 6".

540-15

REVISIONS	
NAME	DATE

ILLINOIS DEPARTMENT OF TRANSPORTATION
DISTRICT 3 STANDARDS
FAP 681 (IL RTE. 116)
SECTION (115)RS-1
LIVINGSTON COUNTY
VILLAGE OF CULLOM

SCALE: VERT. DRAWN BY: BISHOP
HORIZ. DESIGNED BY: BOTT
DATE: 11/07/03 CHECKED BY: COLBROOK

GREENE & BRADFORD, INC.
OF SPRINGFIELD
CONSULTING ENGINEERS
3015 COPPERSTONE DRIVE
SPRINGFIELD, ILLINOIS 62707
TEL: 217-790-8844

COMPUTER FILE NO.
STANDARDS-K
PROJECT: 03145
09/05/07-WCB