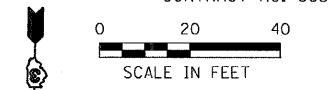
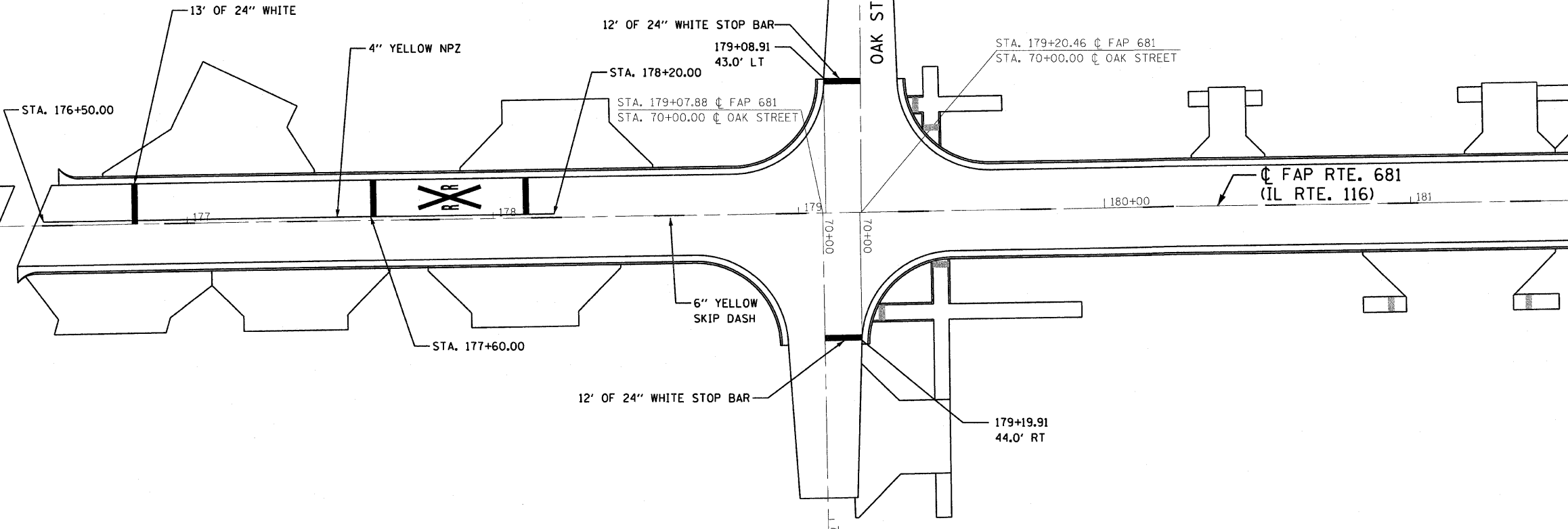


F.A.P. RTE.	SECTION	COUNTY	TOTAL SHEETS	SHEET NO.
681	(115)RS-1	LIVINGSTON	279	107
STA. 176+28.11		TO STA. 187+05.15		
FED. ROAD DIST. NO.		ILLINOIS FED. AID PROJECT		
CONTRACT NO. 66375				



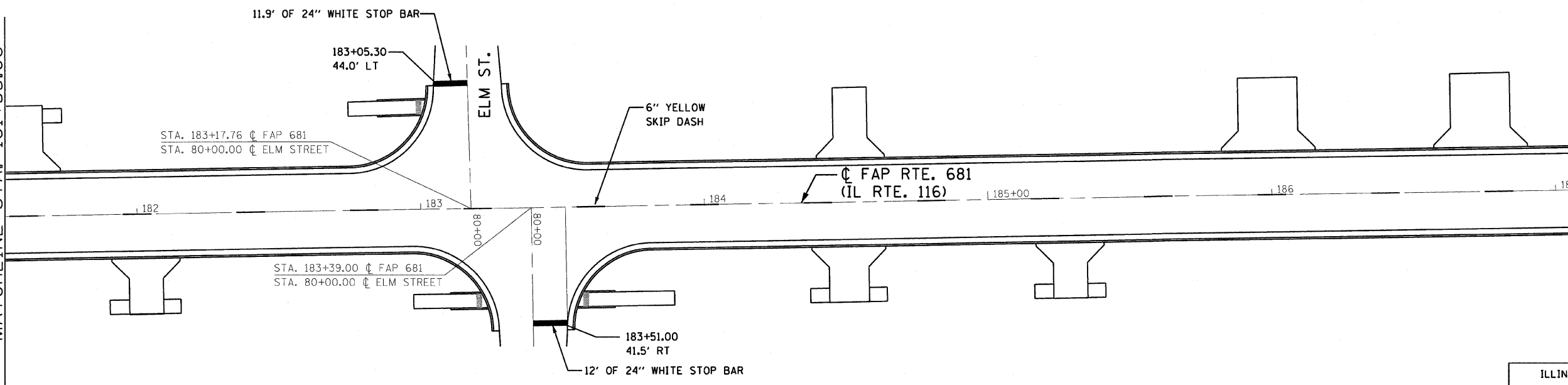
MATCHLINE STA. 176+28.11

MATCHLINE STA. 181+55.08



MATCHLINE STA. 181+55.08

MATCHLINE STA. 187+05.15



REVISIONS	
NAME	DATE

ILLINOIS DEPARTMENT OF TRANSPORTATION
PAVEMENT MARKING PLAN

FAP 681 (IL RTE. 116)
SECTION (115)RS-1
LIVINGSTON COUNTY
VILLAGE OF CULLOM

SCALE: AS SHOWN DRAWN BY: EJR
DATE: CHECKED BY: KCM

McDonough-Whitlow, P.C.
Consulting Engineers & Land Surveyors

138 East Wood Street
Hillsboro, IL 62049
Phone: 217.532.9233
Fax: 217.532.6300
MI PROJ. # 03-060

1/8/2009 3:55:23 PM J:\33495\DRAWINGS\STRIPES\LOG