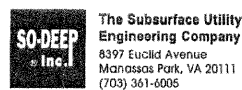


DESIGN		
INT. DATE	REASON	

F.A.P. RTE.	SECTION	COUNTY	TOTAL SHEETS	SHEET NO.
681	(115)RS-1	LIVINGSTON	279	89
STA.		TO STA.		
FED. ROAD DIST. NO.	ILLINOIS	FED. AID PROJECT		
CONTRACT NO. 66375				



### The Subsurface Utility Engineering Company

## So-Deep Test Hole Certification Form

© So-Deep, Inc. 1988, 1991

Control # SILA166  
 Test Hole # 26  
 Plan Scale 1"=20'  
 Sheet # 4  
 Proposed GRADE CHANGE  
 Date OCTOBER 26, 2006

City, County, State LIVINGSTON CO., IL  
 Gen. Loc. SW CORNER ELM ST. & IL-116  
 Recorded Size/Material/Type 8" UNK. TYPE WATER @ "TEE"  
 Foreman/Truck/Form By J. HENRY / 221 / J. HENRY

Condition of paving prior to work  
 NO PAVING

B.M. 1 Elev. = 684.95'  
 is GIVEN  
 B.M. 2 Elev. = 687.85'  
 is GIVEN

Description: (BM 2) TOP NE MOST BONNET BOLT OF F.H., AT SE CORNER ELM ST. & IL-116  
 Description: (BM3) TOP NE MOST BONNET BOLT OF F.H., AT INTR. OF BASS ST. & IL-116

SO-DEEP will attempt to use the BM(H) most applicable to your design. If however, BMs differ by more than .05', resulting differences could cause design conflicts.

Benchmarks check BY 0.01'  
 Elevations are referenced to B.M.#1

Recorded Size/Type of utility WAS FOUND

There WERE NOT additional utilities in the test hole.

The utility WAS in good condition.

Paving Thickness and type NO PAVING

Color of ribbon installed BLUE

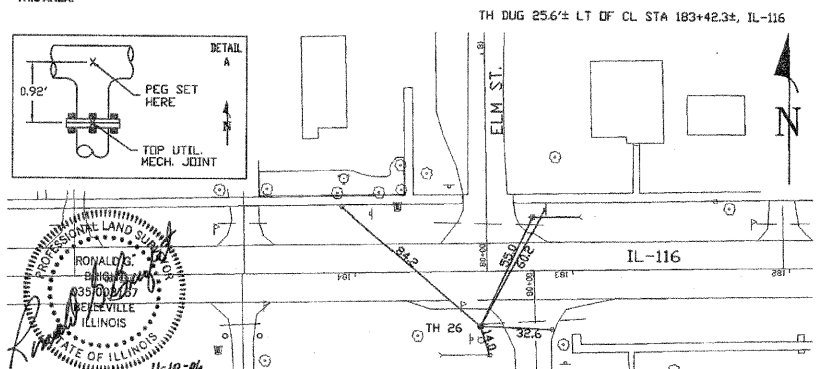
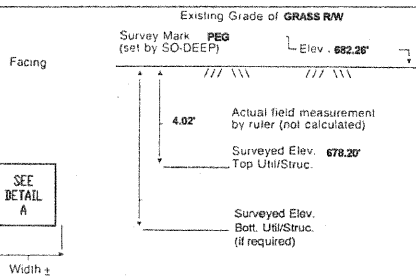
Soil Type WET BROWN W/WATER

Field Condition GRASS R/W

T.H. tied to PEG

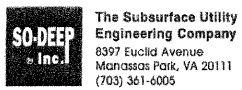
6" (I.D.) METALLIC WATER "TEE"  
 Size/Material/Type  
 Portion of pipe exposed for O.D. measurement:  
 OTHER: (SEE REMARKS)

Remarks: CREW WAS UNABLE TO OBTAIN AN ACCURATE O.D. MEASUREMENT ON THE METALLIC WATER "TEE" DUE TO COPIOUS AMOUNT OF WATER AND UNSTABLE GROUND CONDITIONS. CREW WAS ALSO UNABLE TO OBTAIN A ROD READING ON THE CENTER LINE OF THE "TEE" DUE TO A CORRUGATED METAL STORM PIPE IN THIS AREA.



- |                           |                    |           |                             |
|---------------------------|--------------------|-----------|-----------------------------|
| R/W = Rights of Way       | T.C. = Terra Cotta | 16" = 1"  | ○ = Sewer Manhole           |
| N.T.S. = Not to Scale     | PLAS. = Plastic    | 18" = 2"  | ● = Test Hole               |
| BL = Not Shown on Plan    | BL = Base Line     | 20" = 3"  | ○ = Fire Hydrant            |
| PCC = Precast Concrete    | ELEC. = Electric   | 24" = 4"  | □ = Pole                    |
| CONC. = Concrete          | TELE. = Telephone  | 30" = 6"  | ○ = Telephone Manhole       |
| O.D. = Outside Diameter   | T.H. = Test Hole   | 36" = 7"  | ○ = Electric Manhole        |
| C.I. = Cast Iron          | SW = Sidewalk      | 42" = 8"  | △ = T.S. = Traverse Station |
| D.I. = Ductile Iron       | DW = Driveway      | 48" = 9"  | ▽ = Valve                   |
| RPC = Rough Pour Concrete | BM = Benchmark     | 54" = 9"  | ⊕ = Water Meter             |
| CL = Centerline           | C.B. = Catch Basin | 60" = 10" | ⊕ = Telephone Manhole       |
|                           | GV = Gas Valve     | 66" = 11" | ⊕ = Telephone Pedestal      |

Performing out-of-sight work...with vision!<sup>SM</sup>  
 Note: To eliminate mistakes and check this work, So-Deep suggests you scale and plot all dimensions onto the plans and review all elevations carefully. So-Deep is responsible only for information shown on our forms.



### The Subsurface Utility Engineering Company

## So-Deep Test Hole Certification Form

© So-Deep, Inc. 1988, 1991

Control # SILA166  
 Test Hole # 27  
 Plan Scale 1"=20'  
 Sheet # 3  
 Proposed STORM CROSSING  
 Date OCTOBER 31, 2006

City, County, State LIVINGSTON CO., IL  
 Gen. Loc. IL-116, JUST E OF BASS ST.  
 Recorded Size/Material/Type 6" PLASTIC WATER LINE  
 Foreman/Truck/Form By J. HENRY / 221 / J. HENRY

Condition of paving prior to work  
 NO PAVING

B.M. 1 Elev. = 688.05'  
 is CALCULATED  
 B.M. 2 Elev. = 687.85'  
 is GIVEN

Description: (TBM) CHIS "X" SET TOP N MOST BONNET BOLT OF F.H., @ INTR. BIRCH ST. & IL-116  
 Description: (BM3) TOP NE MOST BONNET BOLT OF F.H., AT INTR. OF BASS ST. & IL-116

SO-DEEP will attempt to use the BM(H) most applicable to your design. If however, BMs differ by more than .05', resulting differences could cause design conflicts.

Benchmarks check BY 0.01'  
 Elevations are referenced to B.M.#1

Recorded Size/Type of utility WAS FOUND

There WERE NOT additional utilities in the test hole.

The utility WAS in good condition.

Paving Thickness and type NO PAVING

Color of ribbon installed BLUE

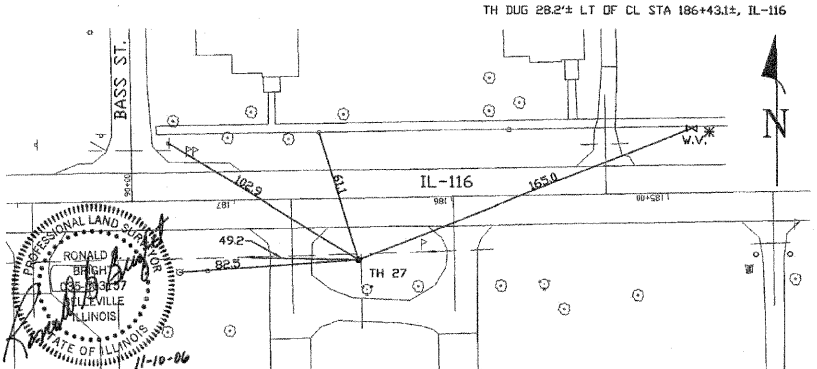
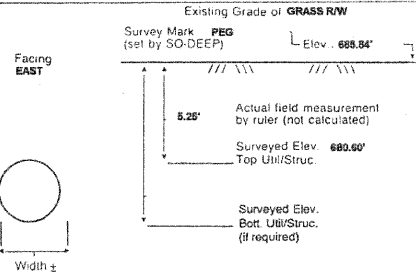
Soil Type MOIST BROWN

Field Condition GRASS R/W

T.H. tied to PEG

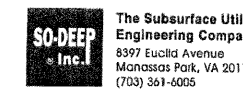
6 3/4" PLASTIC WATER LINE  
 Size/Material/Type  
 Portion of pipe exposed for O.D. measurement:  
 FULL

Remarks: NONE



- |                           |                    |           |                             |
|---------------------------|--------------------|-----------|-----------------------------|
| R/W = Rights of Way       | T.C. = Terra Cotta | 16" = 1"  | ○ = Sewer Manhole           |
| N.T.S. = Not to Scale     | PLAS. = Plastic    | 18" = 2"  | ● = Test Hole               |
| BL = Not Shown on Plan    | BL = Base Line     | 20" = 3"  | ○ = Fire Hydrant            |
| PCC = Precast Concrete    | ELEC. = Electric   | 24" = 4"  | □ = Pole                    |
| CONC. = Concrete          | TELE. = Telephone  | 30" = 6"  | ○ = Telephone Manhole       |
| O.D. = Outside Diameter   | T.H. = Test Hole   | 36" = 7"  | ○ = Electric Manhole        |
| C.I. = Cast Iron          | SW = Sidewalk      | 42" = 8"  | △ = T.S. = Traverse Station |
| D.I. = Ductile Iron       | DW = Driveway      | 48" = 9"  | ▽ = Valve                   |
| RPC = Rough Pour Concrete | BM = Benchmark     | 54" = 9"  | ⊕ = Water Meter             |
| CL = Centerline           | C.B. = Catch Basin | 60" = 10" | ⊕ = Telephone Manhole       |
|                           | GV = Gas Valve     | 66" = 11" | ⊕ = Telephone Pedestal      |

Performing out-of-sight work...with vision!<sup>SM</sup>  
 Note: To eliminate mistakes and check this work, So-Deep suggests you scale and plot all dimensions onto the plans and review all elevations carefully. So-Deep is responsible only for information shown on our forms.



### The Subsurface Utility Engineering Company

## So-Deep Test Hole Certification Form

© So-Deep, Inc. 1988, 1991

Control # SILA166  
 Test Hole # 28  
 Plan Scale 1"=20'  
 Sheet # 3  
 Proposed STORM CROSSING  
 Date OCTOBER 31, 2006

City, County, State LIVINGSTON CO., IL  
 Gen. Loc. IL-116, JUST W OF BASS ST.  
 Recorded Size/Material/Type 6" PLASTIC WATER LINE  
 Foreman/Truck/Form By J. HENRY / 221 / J. HENRY

Condition of paving prior to work  
 NO PAVING

B.M. 1 Elev. = 698.05'  
 is CALCULATED  
 B.M. 2 Elev. = 687.85'  
 is GIVEN

Description: (TBM) CHIS "X" SET TOP N MOST BONNET BOLT OF F.H., @ INTR. BIRCH ST. & IL-116  
 Description: (BM3) TOP NE MOST BONNET BOLT OF F.H., AT INTR. OF BASS ST. & IL-116

SO-DEEP will attempt to use the BM(H) most applicable to your design. If however, BMs differ by more than .05', resulting differences could cause design conflicts.

Benchmarks check BY 0.01'  
 Elevations are referenced to B.M.#1

Recorded Size/Type of utility WAS FOUND

There WERE NOT additional utilities in the test hole.

The utility WAS in good condition.

Paving Thickness and type NO PAVING

Color of ribbon installed BLUE

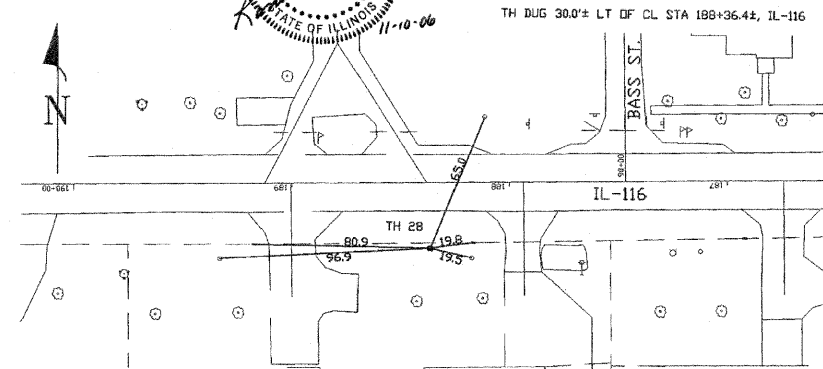
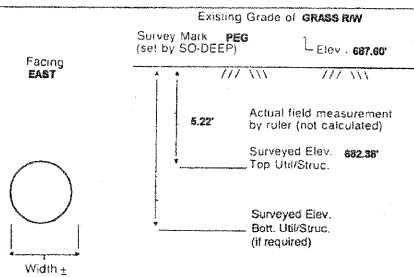
Soil Type MOIST BROWN

Field Condition GRASS R/W

T.H. tied to PEG

6 3/4" PLASTIC WATER LINE  
 Size/Material/Type  
 Portion of pipe exposed for O.D. measurement:  
 FULL

Remarks: NONE



- |                           |                    |           |                             |
|---------------------------|--------------------|-----------|-----------------------------|
| R/W = Rights of Way       | T.C. = Terra Cotta | 16" = 1"  | ○ = Sewer Manhole           |
| N.T.S. = Not to Scale     | PLAS. = Plastic    | 18" = 2"  | ● = Test Hole               |
| BL = Not Shown on Plan    | BL = Base Line     | 20" = 3"  | ○ = Fire Hydrant            |
| PCC = Precast Concrete    | ELEC. = Electric   | 24" = 4"  | □ = Pole                    |
| CONC. = Concrete          | TELE. = Telephone  | 30" = 6"  | ○ = Telephone Manhole       |
| O.D. = Outside Diameter   | T.H. = Test Hole   | 36" = 7"  | ○ = Electric Manhole        |
| C.I. = Cast Iron          | SW = Sidewalk      | 42" = 8"  | △ = T.S. = Traverse Station |
| D.I. = Ductile Iron       | DW = Driveway      | 48" = 9"  | ▽ = Valve                   |
| RPC = Rough Pour Concrete | BM = Benchmark     | 54" = 9"  | ⊕ = Water Meter             |
| CL = Centerline           | C.B. = Catch Basin | 60" = 10" | ⊕ = Telephone Manhole       |
|                           | GV = Gas Valve     | 66" = 11" | ⊕ = Telephone Pedestal      |

Performing out-of-sight work...with vision!<sup>SM</sup>  
 Note: To eliminate mistakes and check this work, So-Deep suggests you scale and plot all dimensions onto the plans and review all elevations carefully. So-Deep is responsible only for information shown on our forms.

PLOTS & CHECKS		
INT. DATE NO.	REASON	

CHECKS		
INT. DATE	REASON	

REVISIONS	
NAME	DATE

ILLINOIS DEPARTMENT OF TRANSPORTATION

## TEST HOLES

FAP 681 (IL RTE. 116)  
 SECTION (115)RS-1  
 LIVINGSTON COUNTY  
 VILLAGE OF CULLOM

SCALE: VERT. 1/4"=1'-0"  
 HORIZ. 1"=40'  
 DATE: 3/1/07

DRAWN BY: LANDREY  
 DESIGNED BY: BOTT  
 CHECKED BY: BOTT

GREENE & BRADFORD, INC.  
 OF SPRINGFIELD

COMPUTER FILE NO. 03145TH9  
 PROJECT 03145  
 09/05/07-WCB