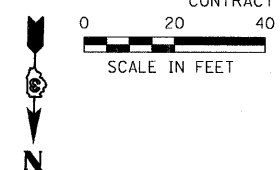
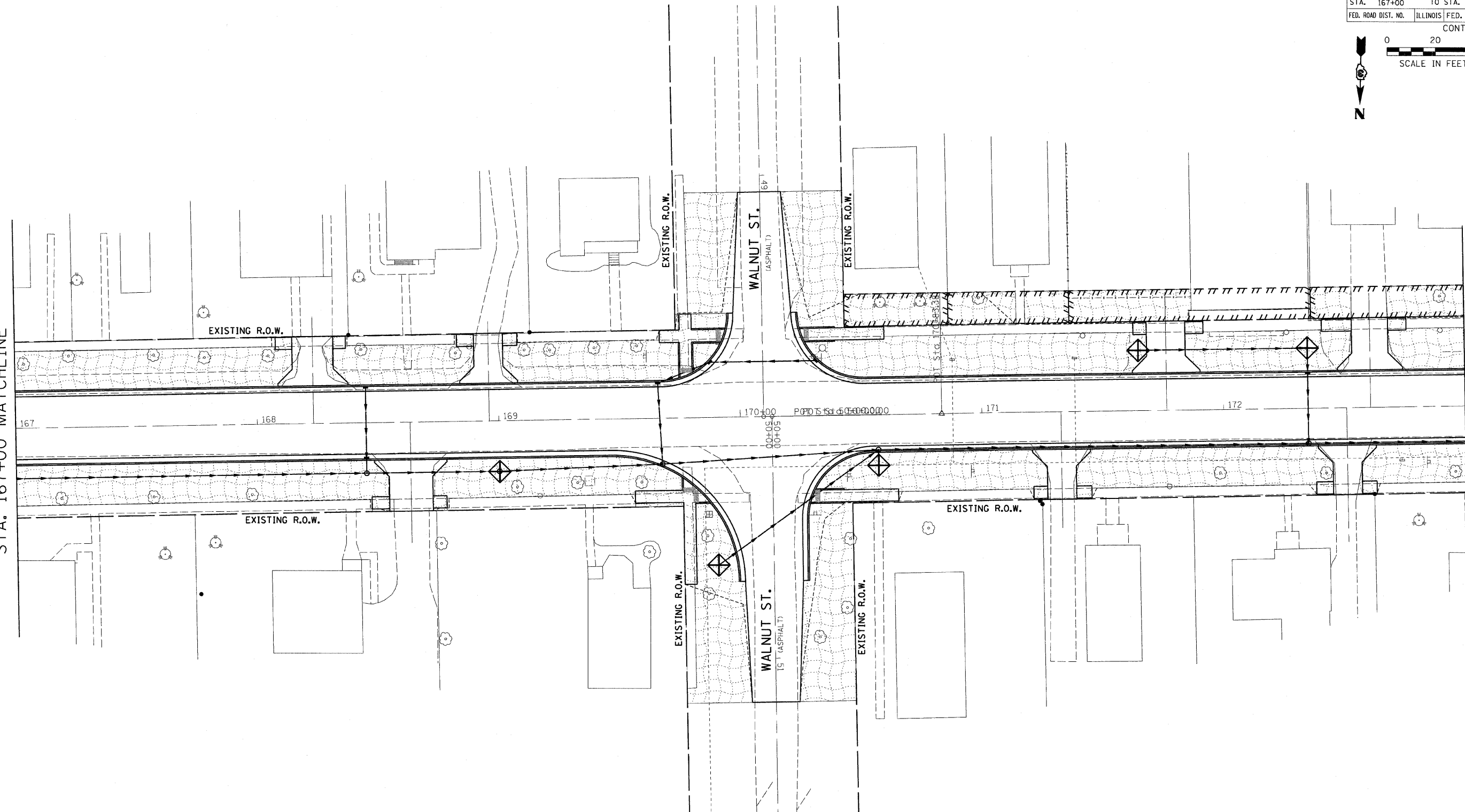


F.A.P. RTE.	SECTION	COUNTY	TOTAL SHEETS	SHEET NO.
681	(115)RS-1	LIVINGSTON	279	60
STA. 167+00		TO STA. 173+00		
FED. ROAD DIST. NO.	ILLINOIS FED. AID PROJECT			
CONTRACT NO. 66375				



STA. 167+00 MATCHLINE

STA. 173+00 MATCHLINE



REVISIONS	
NAME	DATE

ILLINOIS DEPARTMENT OF TRANSPORTATION
EROSION CONTROL PLAN
 FAP 681 (IL RTE. 116)
 SECTION (115)RS-1
 LIVINGSTON COUNTY
 VILLAGE OF CULLOM

SCALE: AS SHOWN DRAWN BY: EJR
 DATE CHECKED BY: TMM

McDonough-Whitlow, P.C.
 Consulting Engineers & Land Surveyors

138 East Wood Street
 Moline, IL 62409
 Phone: 271.532.9233
 Fax: 271.532.6300
 MWD 03-060

1/8/2009 9:44:33 AM
 J:\03\115\DRAWINGS\EROSION.dgn