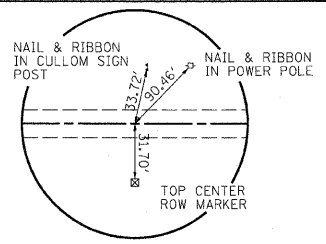


INT.	DATE	REASON

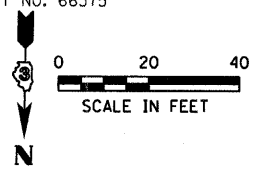
MARY HARMS, ETAL



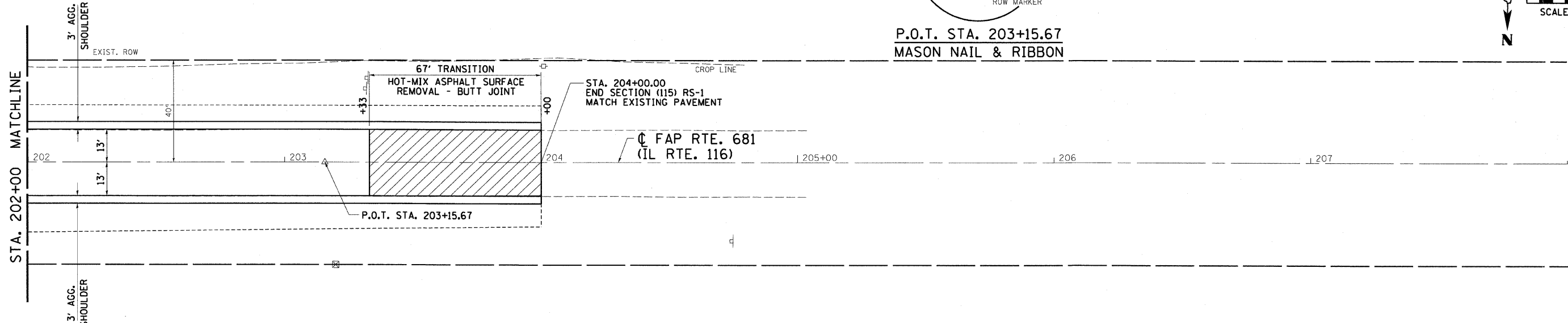
P.O.T. STA. 203+15.67
MASON NAIL & RIBBON

F.A.P. RTE.	SECTION	COUNTY	TOTAL SHEETS	SHEET NO.
681	(115)RS-1	LIVINGSTON	279	53

STA.	202+00	TO STA.	206+00
FED. ROAD DIST. NO.	ILLINOIS FED. AID PROJECT		
CONTRACT NO. 66375			



PLAN	DATE	BY

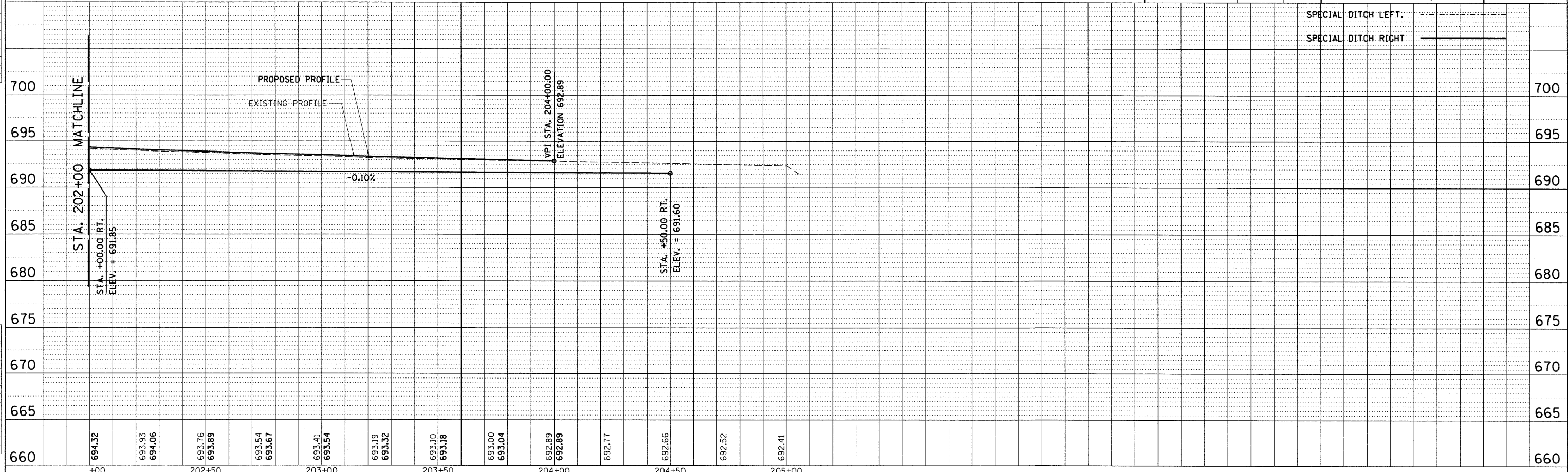


CULLOM CENTENNIAL FUND

REVISION	DATE	BY

	GREENE & BRADFORD, INC. OF SPRINGFIELD CONSULTING ENGINEERS ARCHITECTS AND SURVEYORS SPECIALTY & LICENSED PROFESSIONAL DESIGN FIRM REG. NO. 02319 PROJECTS, DESIGN, CONSTRUCTION ADMINISTRATION 4017 TWO SQUARE, 6TH FLOOR, ST. LOUIS, MISSOURI 63103	COMPUTER FILE NO. PLN116CP2-03 PROJECT: 03145 09/05/07-WCB
--	--	--

PROFILE	DATE	BY



CHECKS	DATE	REASON

100TPP-20 - 1:20 8/07/00