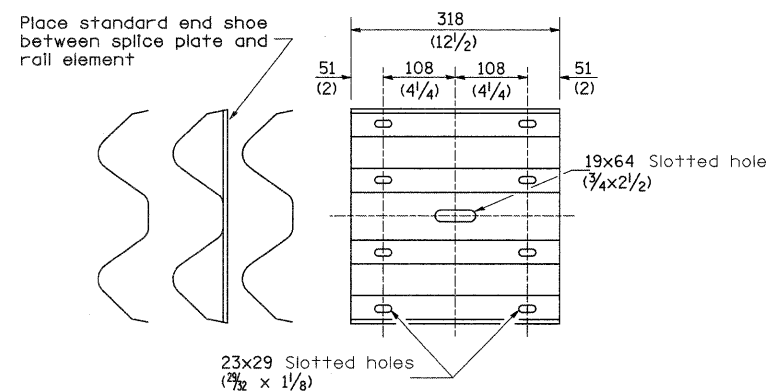
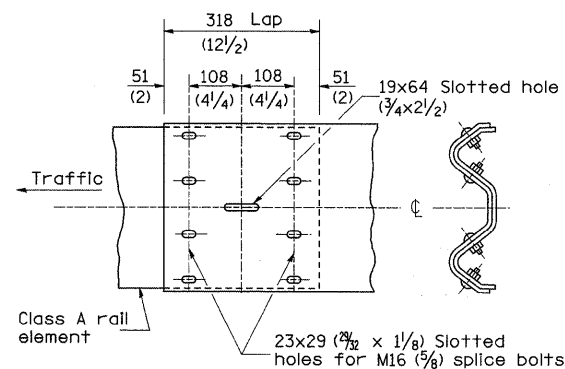


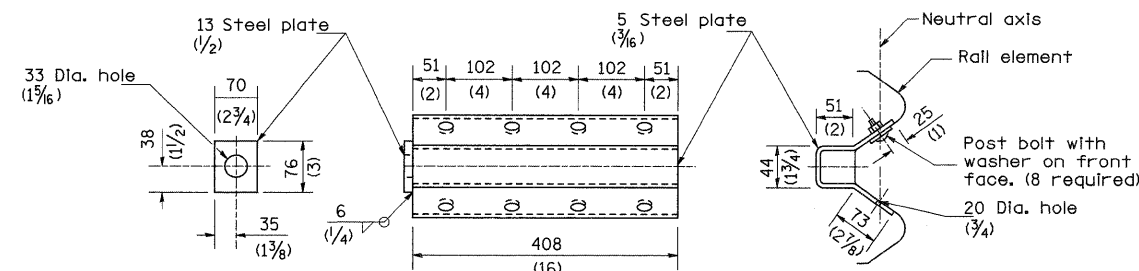
# REMOVE AND REERECT STEEL PLATE BEAM GUARDRAIL



**SPLICE PLATE**



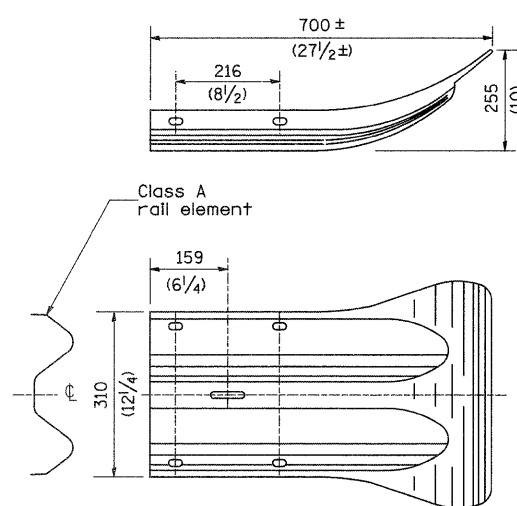
**RAIL ELEMENT SPLICE**



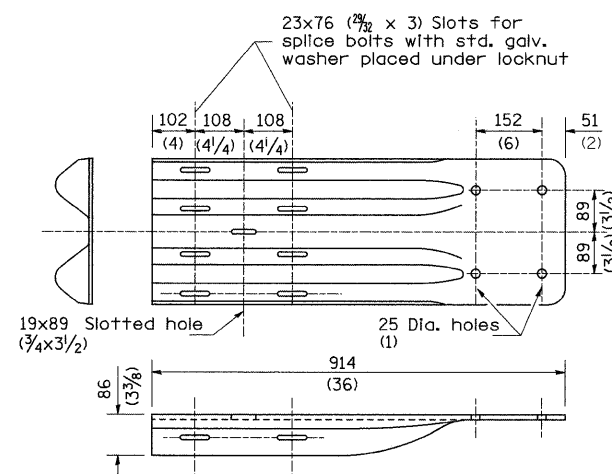
NOTE

Anchor plate T shall be used to attach cable assembly to guardrail when required on traffic barrier terminals.

**ANCHOR PLATE T DETAILS**



**END SECTION**



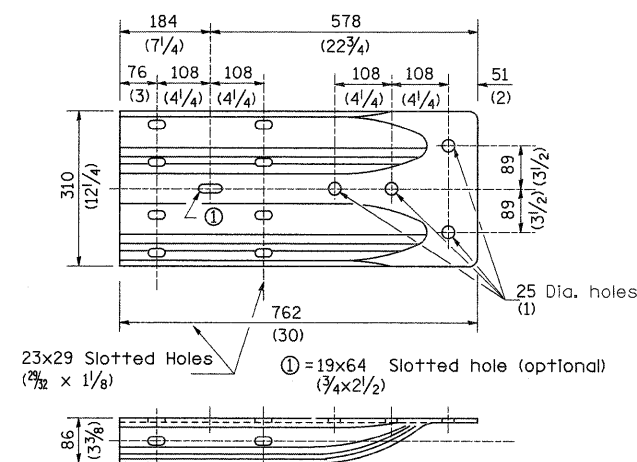
NOTE

When end shoe is attached to a bridge parapet which has an expansion joint, the bolts shall be provided with a locknut or double nut and shall be tightened only to a point that will allow guardrail movement.

The standard end shoe shall be attached to the concrete with pre-drilled or self-drilling anchor bolts. The anchor cone shall be set flush with the surface of the concrete.

Externally threaded studs protruding from the surface of the concrete will not be permitted.

**END SHOE**



**ALTERNATE END SHOE**

|   |                             |            |                   |   |                                       |   |                      |             |              |           |  |
|---|-----------------------------|------------|-------------------|---|---------------------------------------|---|----------------------|-------------|--------------|-----------|--|
| FILE NAME =   | USER NAME = duncanfa        | DESIGNED - | REVISED - 1-15-08 | <b>STATE OF ILLINOIS<br/>DEPARTMENT OF TRANSPORTATION</b> | <b>REGION 2 / DISTRICT 2 STANDARD</b> | F.A.I. RTE.                                   | SECTION              | COUNTY      | TOTAL SHEETS | SHEET NO. |  |
| c:\pw_work\PWIDOT\DUNCANFA\dms33952\d0805-shit-ts.dgn | PLOT SCALE = 50.0000' / IN. | DRAWN -    | REVISED -         |   |                                       | 74  | 81-(1-2,1,2-2)RS-1&M | ROCK ISLAND | 246          | 245       |  |
| PLOT DATE = Fri Feb 06 10:54:59 2009                  | DATE -                      | CHECKED -  | REVISED -         |   |                                       | CONTRACT NO. 64A97                            |                      |             |              |           |  |
|   |                             | DATE -     | REVISED -         |   |                                       | FED. ROAD DIST. NO. ILLINOIS FED. AID PROJECT |                      |             |              |           |  |