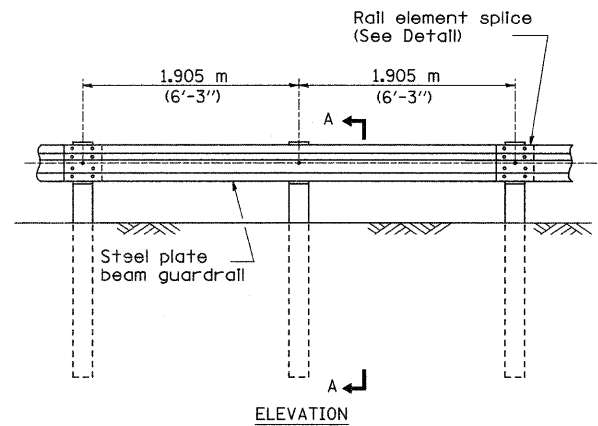
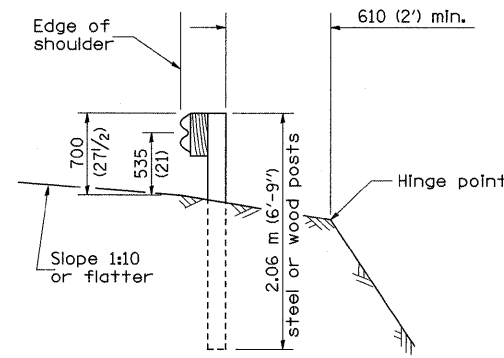


REMOVE AND REERECT STEEL PLATE BEAM GUARDRAIL

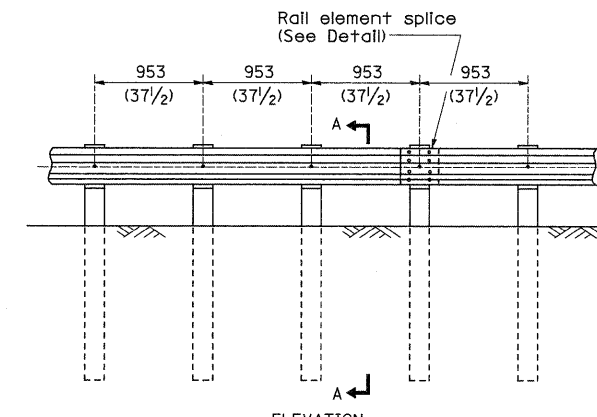


TYPE A

1.905 m (6'-3") Typical post spacing

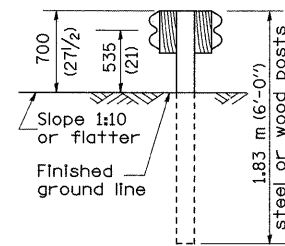


SECTION A-A

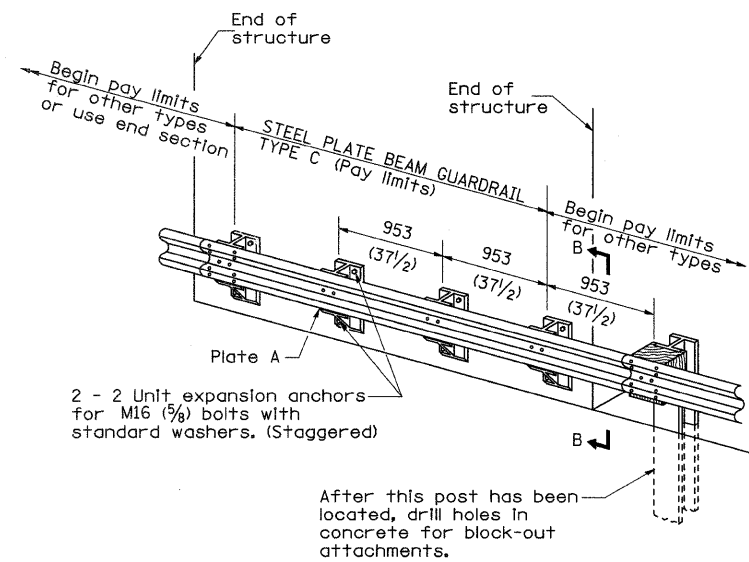


TYPE B

953 (37 1/2) Closed post spacing

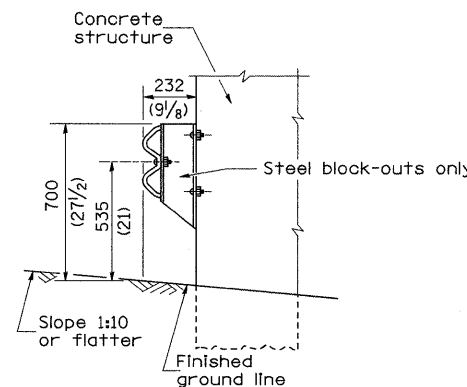


SECTION C-C

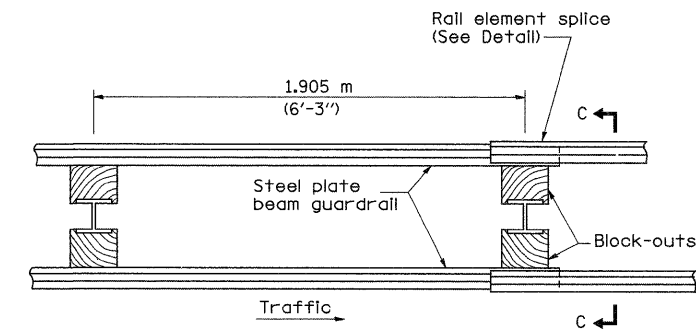


TYPE C

953 (37 1/2) Block-out spacing



SECTION B-B



TYPE D

Double steel plate beam guardrail
1.905 m (6'-3") typical post spacing

GENERAL NOTES

All slope ratios are expressed as units of vertical displacement to units of horizontal displacement (V:H).

All dimensions are in millimeters (inches) unless otherwise shown.

The existing steel posts may be drilled to match the bolt pattern shown herein for the wood block-out, or a new steel post shall be provided.

This detail is applicable to the guardrail system used prior to January 1, 2007. For details on the Midwest Guardrail System, see Standard 630001.

FILE NAME =	USER NAME = duncanfa	DESIGNED -	REVISED - 1-15-08
at\pw_work\PWIDOT\DUNCANFA\dms33952\d0805-shit-ts.dgn		DRAWN -	REVISED -
	PLOT SCALE = 50.0000' / IN.	CHECKED -	REVISED -
	PLOT DATE = Fri Feb 06 10:54:59 2009	DATE -	REVISED -

**STATE OF ILLINOIS
DEPARTMENT OF TRANSPORTATION**

REGION 2 / DISTRICT 2 STANDARD

SCALE: SHEET NO. OF SHEETS STA. TO STA.

F.A.I. RTE.	SECTION	COUNTY	TOTAL SHEETS	SHEET NO.
74	81-1-2,1,2-2/RS-1&M	ROCK ISLAND	246	243
FED. ROAD DIST. NO. ILLINOIS FED. AID PROJECT			CONTRACT NO. 64A97	