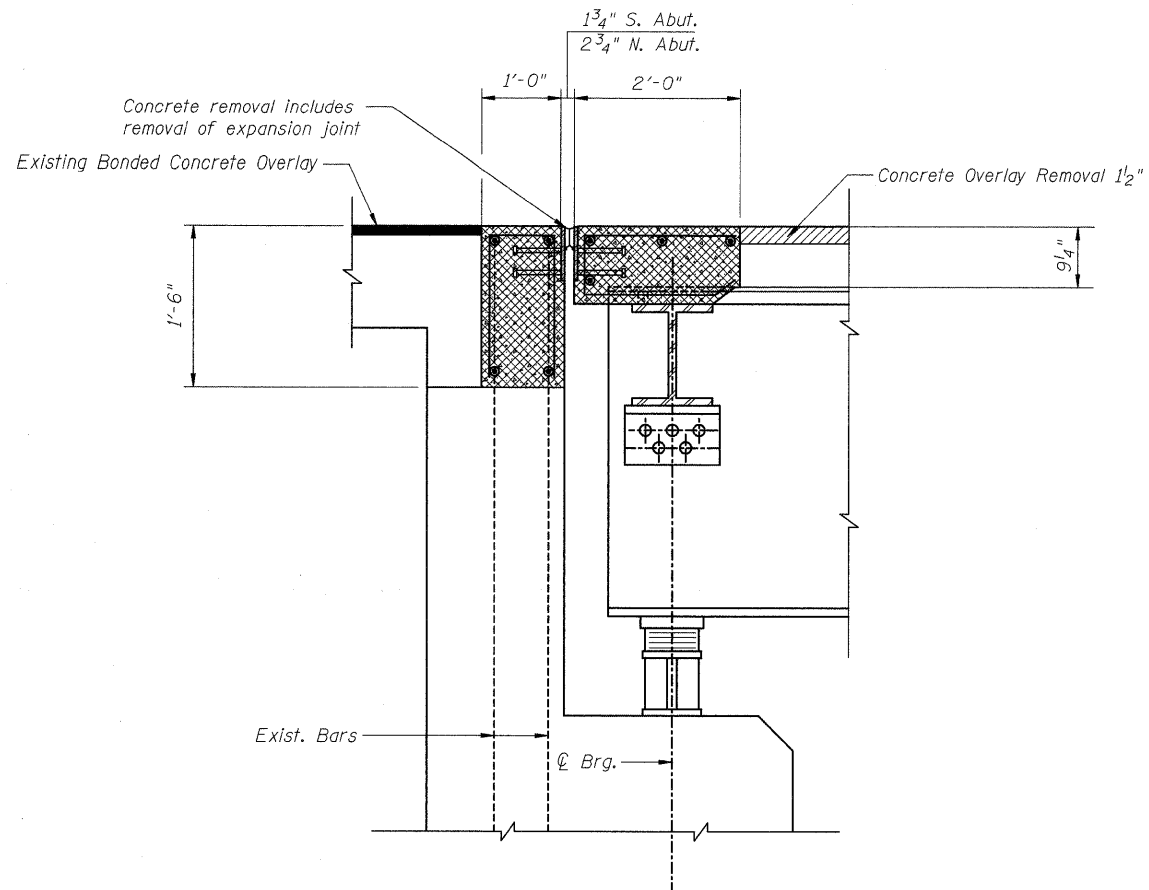


STATE OF ILLINOIS
DEPARTMENT OF TRANSPORTATION

ROUTE NO.	SECTION	COUNTY	TOTAL SHEETS	SHEET NO.	SHEET NO.
FAI 74	*	ROCK ISLAND	246	227	11 SHEETS
FED. ROAD DIST. NO. 7	ILLINOIS	FED. AID PROJECT			

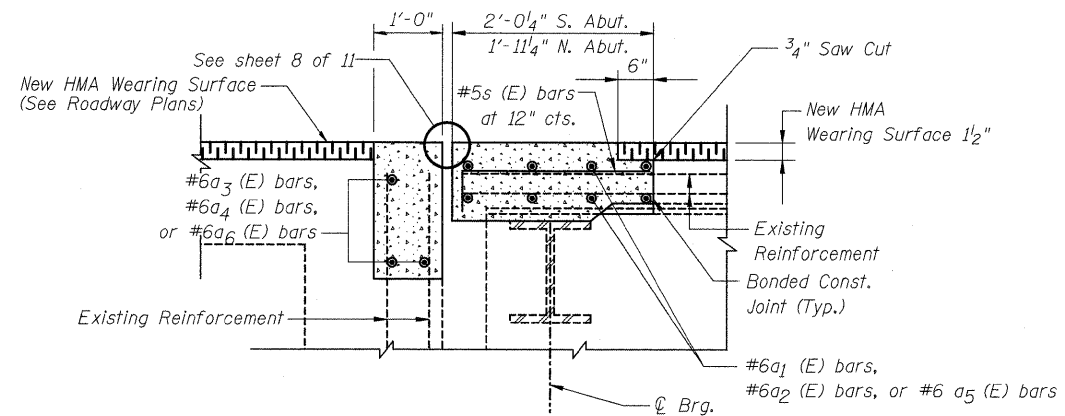
* 81 (1-2, 1, 2-2) RS-1 & M



EXISTING SECTION D-D THRU ABUTMENT
(North & South Abutment)

LEGEND

- Concrete Removal
- Bridge Deck Scarification



PROPOSED SECTION D-D THRU ABUTMENT
(North & South Abutment)

DESIGNED	DFM
CHECKED	DFM
DRAWN	EBS
CHECKED	DFM

BRIDGE REPAIR DETAILS
F.A.I. 74 (OVER 38TH AVE.)
ROCK ISLAND COUNTY
STRUCTURE NO. 081-0110